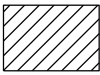
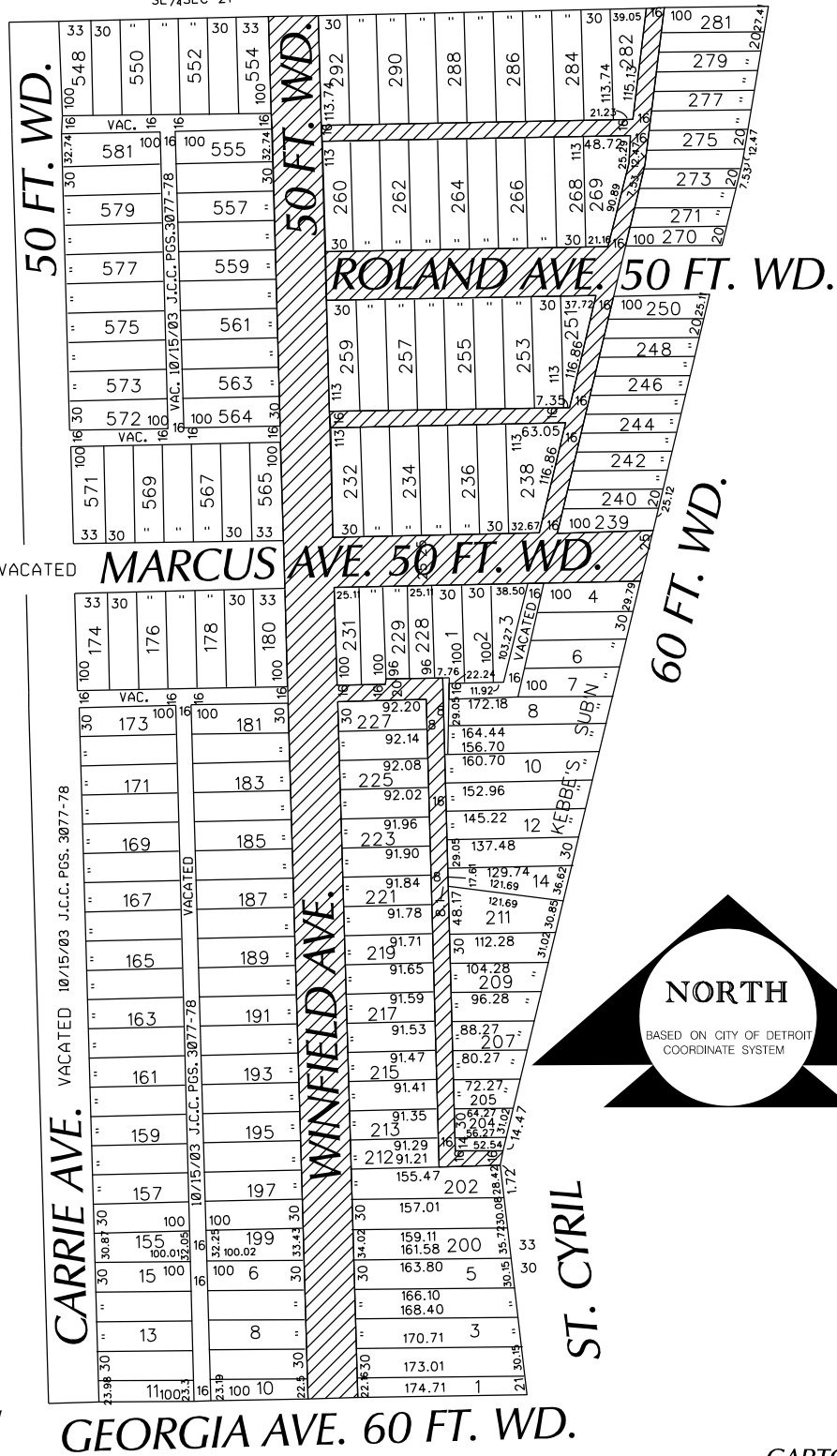


PETITION NO. 441
 GIFFELS WEBSTER ENGINEERS
 28 WEST ADAMS, SUITE 1200
 DETROIT, MICHIGAN 48226
 C/O JAMES FOSTER
 PHONE NO. 313 962 4442
 FAX NO. 313 962 5068

NE 1/4 SEC 21
 SE 1/4 SEC 21

HUBER AVE. 66 FT. WD.



- OUTRIGHT VACATION

GEORGIA AVE. 60 FT. WD.

(FOR OFFICE USE ONLY)

B					
A					
DESCRIPTION	DRWN	CHKD	APPD	DATE	
REVISIONS					
DRAWN BY	KSM		CHECKED		
DATE	2-23-15		APPROVED		

REQUEST OUTRIGHT VACATION
 IN THE AREA BOUND BY
 WINFIELD, ST. CYRIL, GEORGIA
 AND HUBER

CITY OF DETROIT
 CITY ENGINEERING DEPARTMENT
 SURVEY BUREAU
 JOB NO. 01-01
 DRWG. NO. X441