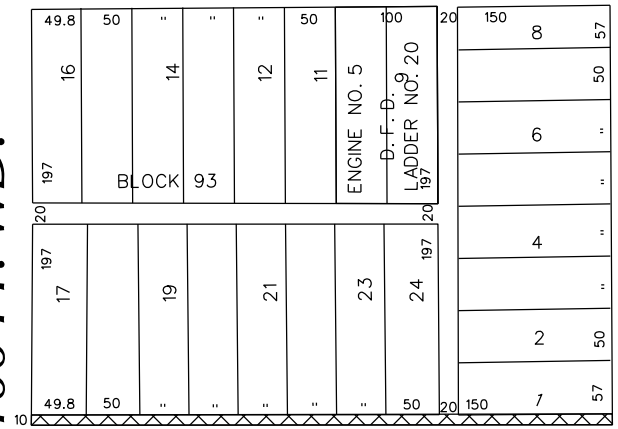
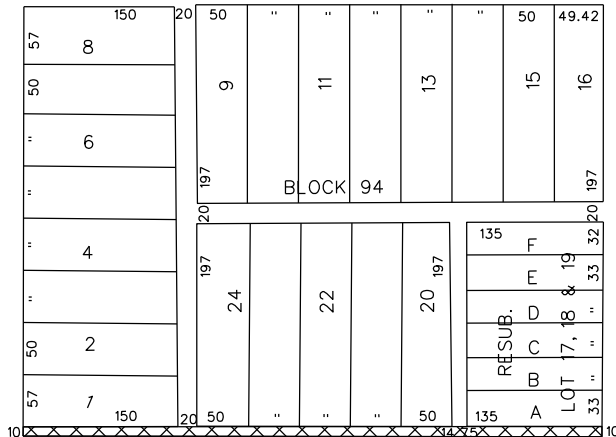


PETITION NO. 434
 GIFFELS WEBSTER
 28 W. ADAMS, SUITE 1200
 DETROIT, MICHIGAN 48226
 C/O JAMES FOSTER
 PHONE NO. 313 962-4442



ALEXANDRINE AVE. 100 FT. WD.



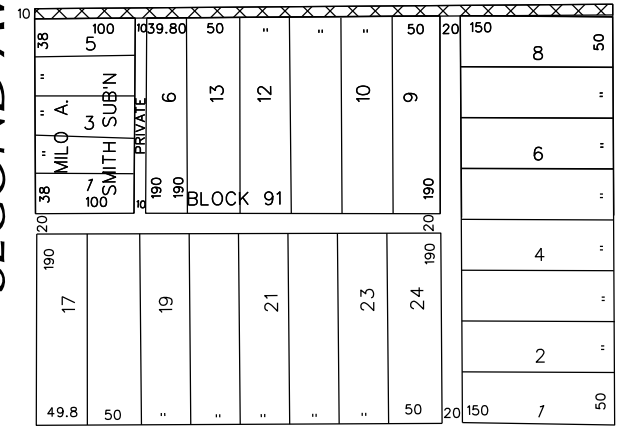
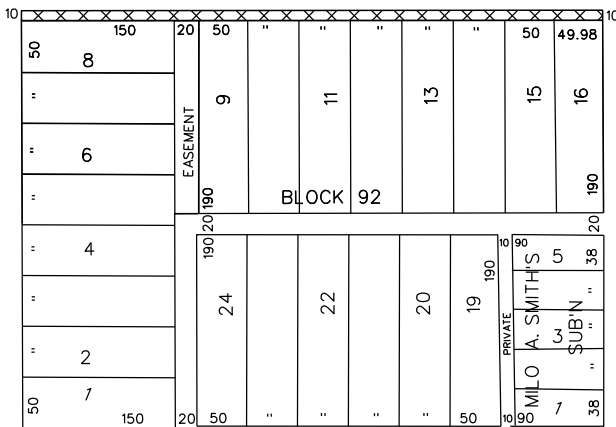
THIRD AVE. 70 FT. WD.

SECOND AVE. 100 FT. WD.

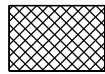
CASS AVE. 80 FT. WD.

SELDEN AVE. 100 FT. WD.

100 FT. WD.



BRAINARD ST. 100 FT. WD.



- REQUESTED VACATION

(FOR OFFICE USE ONLY)

CARTO 29 B AND 30 E

B					
A					
DESCRIPTION	DRWN	CHKD	APPD	DATE	
REVISIONS					
DRAWN BY	WLW	CHECKED			
DATE	10-14-14	APPROVED			

REQUEST TO VACATE
 A PORTION OF SELDEN AVE.,
 20 FT. WD. IN THE BLOCK BOUND BY
 THIRD, ALEXANDRINE, CASS AVE.
 AND BRAINARD ST.

CITY OF DETROIT	
CITY ENGINEERING DEPARTMENT	
SURVEY BUREAU	
JOB NO.	01-01
DRWG. NO.	X 434