

**TO: City Engineering Division, DPW  
65 Cadillac Square, Suite 900  
Detroit, Michigan 48226-2873  
Survey Bureau: 313-224-3970**

x381

The proposed change in property (referred to on the other side of this sheet) would affect our services as follows:

- Not Involved
- Involved; but asking you to hold action on this petition until further notice.
- Involved; but no objections to the property change .
- Involved; but no objections to the property change...provided as easement of the full width of the public right-of-way (street, alley or other public place) is reserved.
- Involved; the nature of our services, and the estimated costs of removing and/or rerouting such services are:

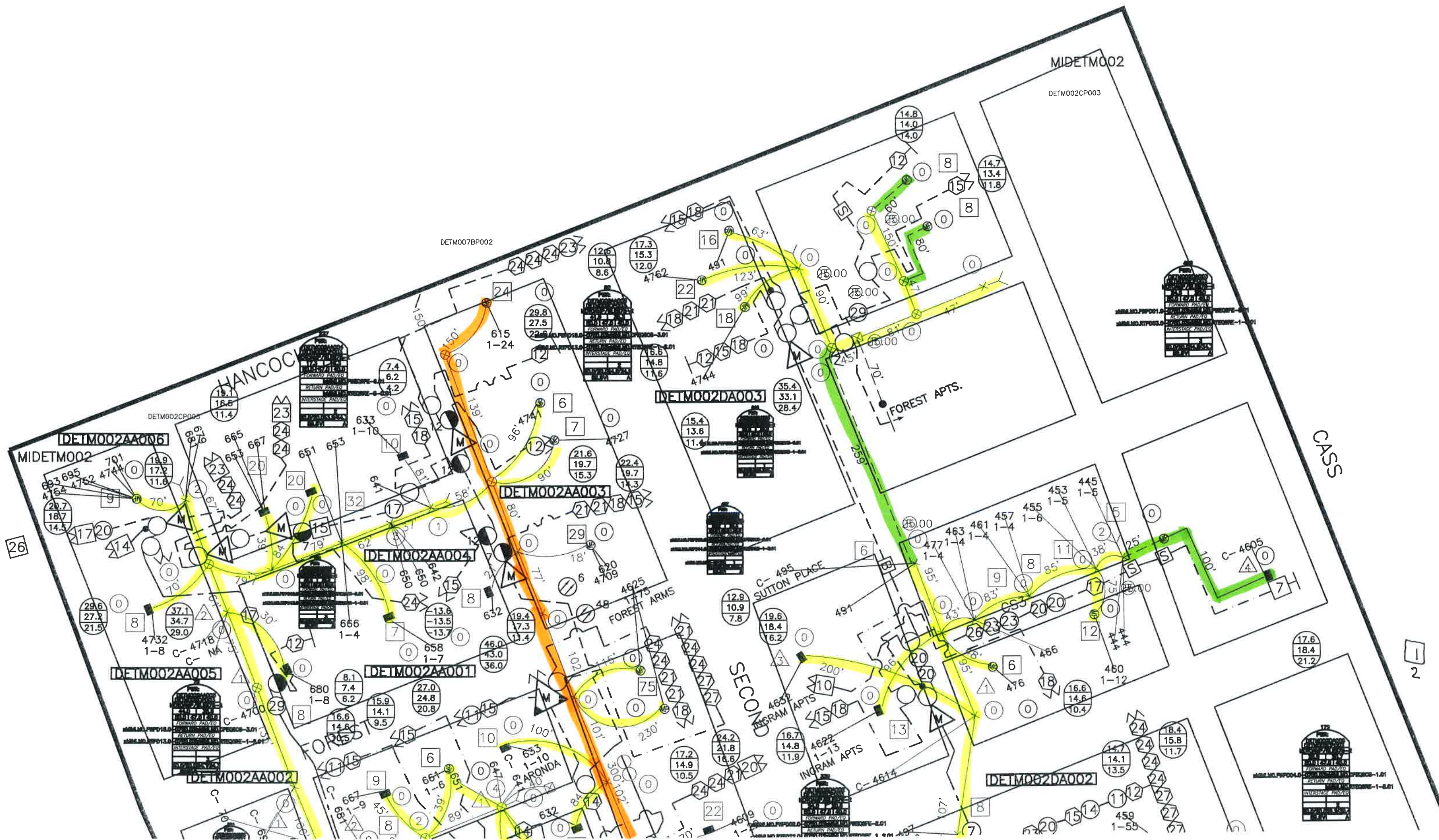
Comcast Cable  
(Utility or City Department)

Josh Williams  
By

\_\_\_\_\_  
Title

9-23-14  
Date

419-874-9262  
Area code – Telephone number



MIDETM002

DETMO02CP003

DETMO07BP002

HANCOC

DETMO02DA003

FOREST APTS.

MIDETM002

DETMO02AA006

DETMO02AA003

DETMO02AA004

DETMO02AA005

DETMO02AA001

DETMO02AA002

DETMO02DA002

CASS

SECOND

C-495 SUTTON PLACE

INGRAM APTS

INGRAM APTS

C-4605

DETMO02CP004

DETMO02CP005

26

1  
2

MIDETMOOS

DETM002AA007

DETM002DA016

DETM002AA008

DETM002DA007

DETM002DA009

DETM002DA001

DETM002DA010

DETM002DA014

DETM002DA015

DETM002BA001

DETM002DA011

BEETHOVEN APTS  
1-53

MIDETMOOS

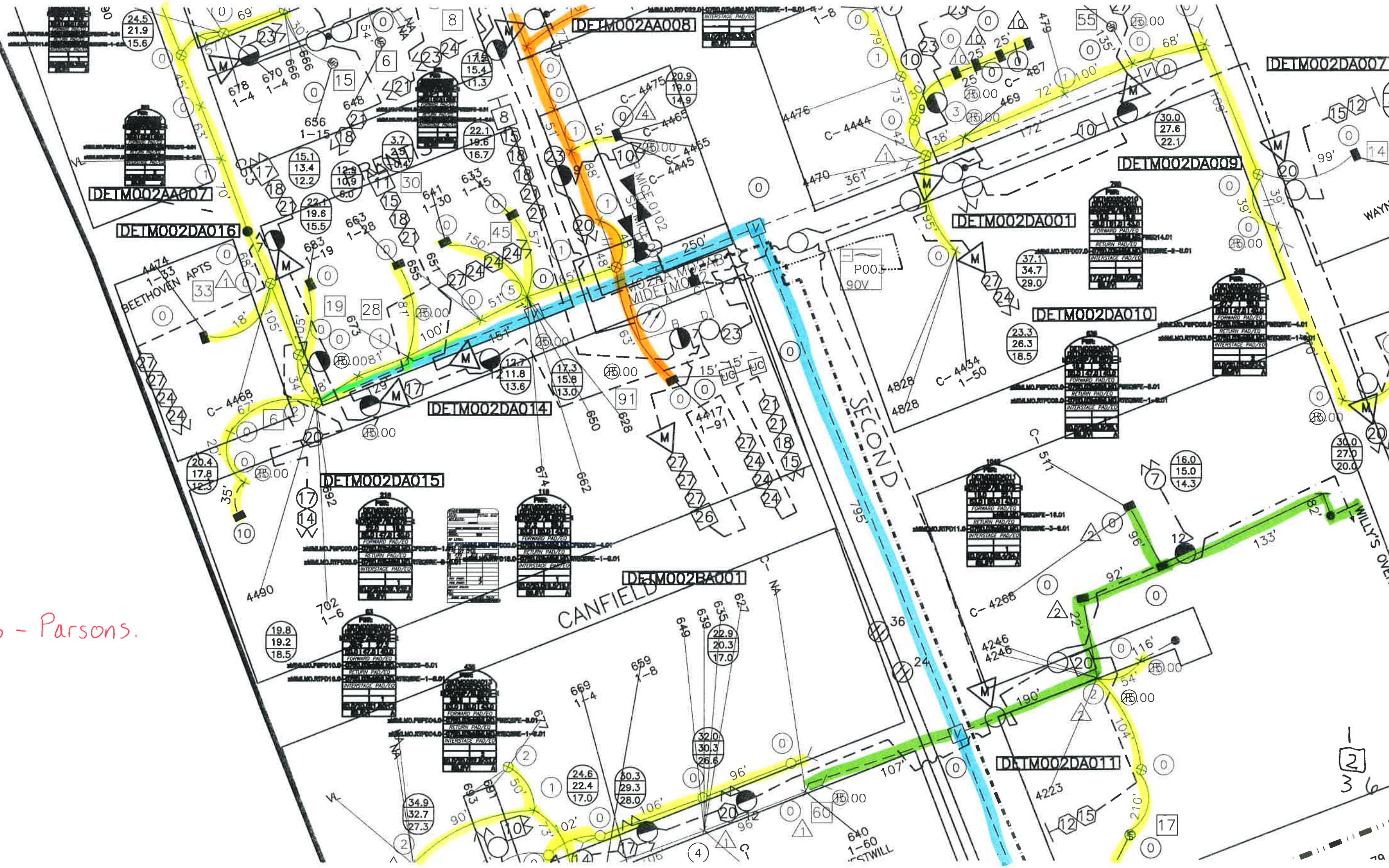
SECOND

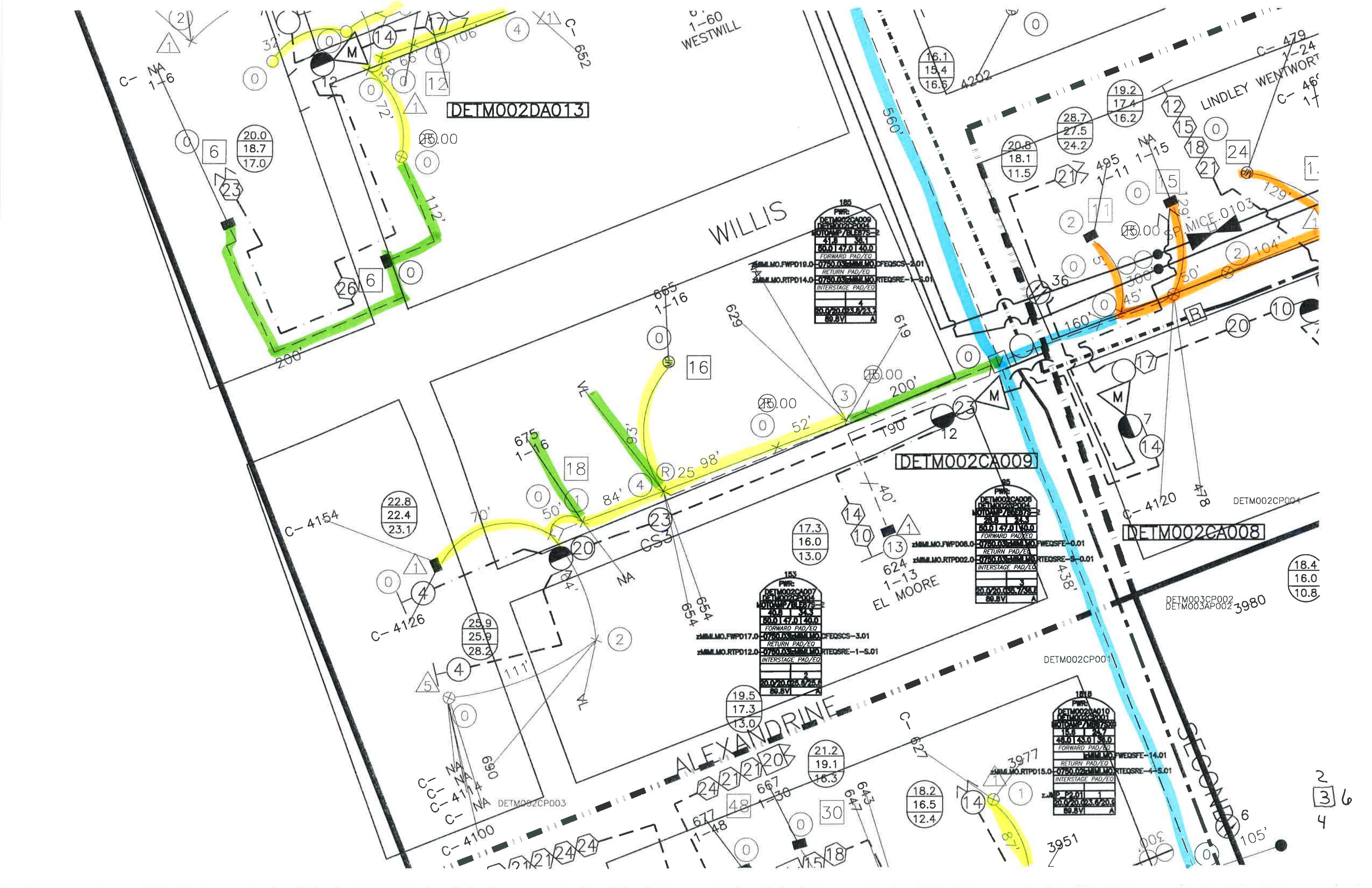
CANFIELD

WILLY'S OVE

Prentis - Parsons.

1  
2  
3  
6





1-60  
WESTWILL

DETMO02DA013

WILLIS

DETMO02CA009

DETMO02CA008

ALEXANDRINE

EL MOORE

LINDLEY WENTWORTH

185	
PWR	
DETMO02CA009	
DETMO02CP004	
MIDLINE/BL/ST/	
41.3	36.1
50.0	47.0
140.0	
FORWARD PAD/EO	
ZMM.MO.FWPD19.0-0750.0ZMM.MO.CFEQSCS-2.01	
RETURN PAD/EO	
ZMM.MO.RTPD14.0-0750.0ZMM.MO.RTEQSRE-1-S.01	
INTERSTAGE PAD/EO	
ZMM.MO.FWPD19.0-0750.0ZMM.MO.CFEQSCS-2.01	
ZMM.MO.RTPD14.0-0750.0ZMM.MO.RTEQSRE-1-S.01	
20.0	20.0
23.7	23.7
69.8V1	A

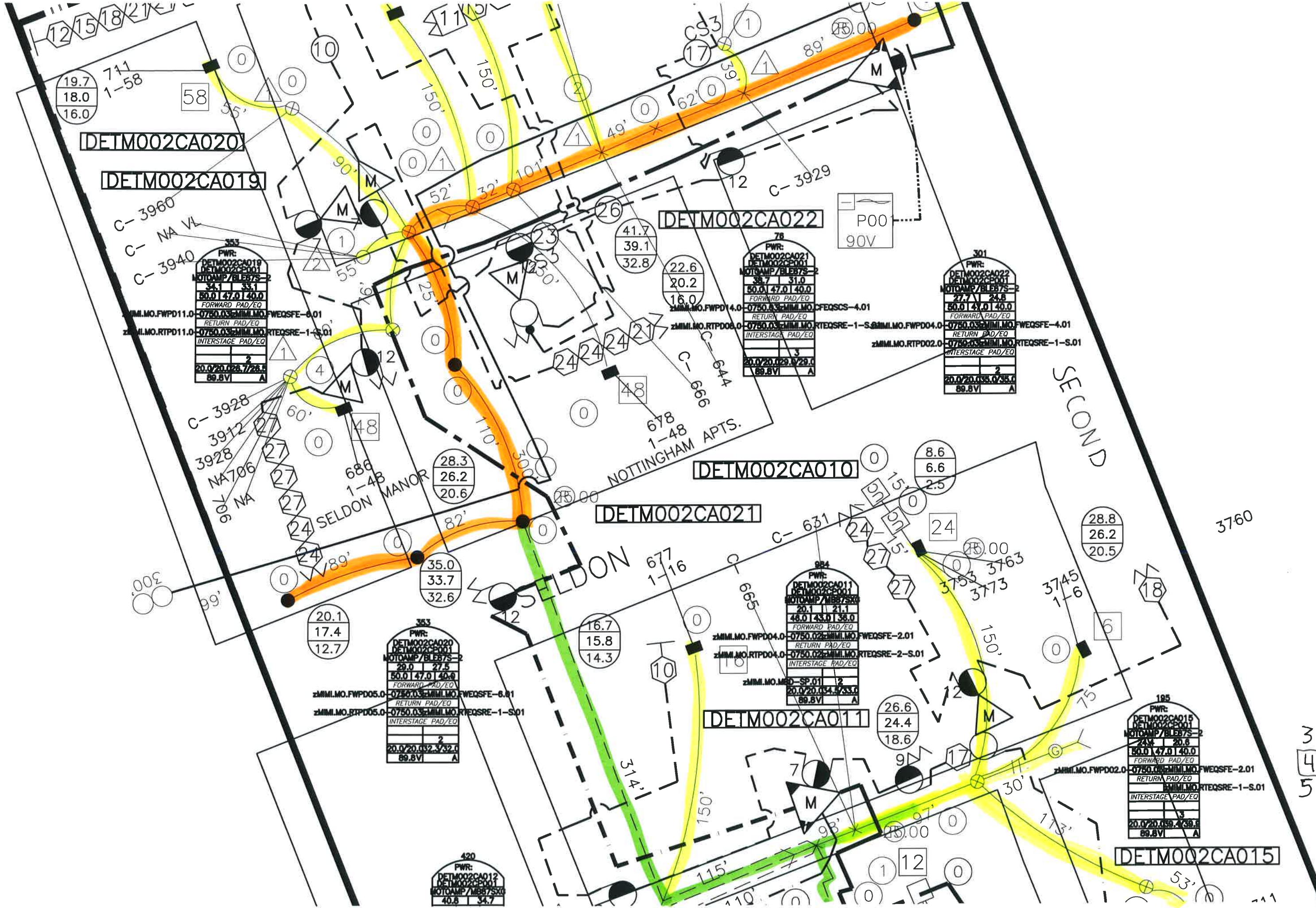
185	
PWR	
DETMO02CA008	
DETMO02CP004	
MIDLINE/BL/ST/	
21.1	21.1
50.0	47.0
140.0	
FORWARD PAD/EO	
ZMM.MO.FWPD08.0-0750.0ZMM.MO.CFEQSCS-3.01	
RETURN PAD/EO	
ZMM.MO.RTPD02.0-0750.0ZMM.MO.RTEQSRE-1-S.01	
INTERSTAGE PAD/EO	
ZMM.MO.FWPD08.0-0750.0ZMM.MO.CFEQSCS-3.01	
ZMM.MO.RTPD02.0-0750.0ZMM.MO.RTEQSRE-1-S.01	
20.0	20.0
23.7	23.7
69.8V1	A

185	
PWR	
DETMO02CA007	
DETMO02CP003	
MIDLINE/BL/ST/	
40.8	34.3
50.0	47.0
140.0	
FORWARD PAD/EO	
ZMM.MO.FWPD17.0-0750.0ZMM.MO.CFEQSCS-3.01	
RETURN PAD/EO	
ZMM.MO.RTPD12.0-0750.0ZMM.MO.RTEQSRE-1-S.01	
INTERSTAGE PAD/EO	
ZMM.MO.FWPD17.0-0750.0ZMM.MO.CFEQSCS-3.01	
ZMM.MO.RTPD12.0-0750.0ZMM.MO.RTEQSRE-1-S.01	
20.0	20.0
23.7	23.7
69.8V1	A

185B	
PWR	
DETMO02CA010	
DETMO02CP001	
MIDLINE/BL/ST/	
18.3	24.7
46.0	43.0
140.0	
FORWARD PAD/EO	
ZMM.MO.FWPD01.0-0750.0ZMM.MO.CFEQSCS-14.01	
RETURN PAD/EO	
ZMM.MO.RTPD15.0-0750.0ZMM.MO.RTEQSRE-4-S.01	
INTERSTAGE PAD/EO	
ZMM.MO.FWPD01.0-0750.0ZMM.MO.CFEQSCS-14.01	
ZMM.MO.RTPD15.0-0750.0ZMM.MO.RTEQSRE-4-S.01	
20.0	20.0
23.7	23.7
69.8V1	A

2  
3  
4  
6





DETMO02CA020

DETMO02CA019

DETMO02CA022

DETMO02CA021

DETMO02CA010

DETMO02CA011

DETMO02CA015

C-3960  
C-NA VL  
C-3940

PWR:	
DETMO02CA019	DETMO02CA019
DETMO02CP001	DETMO02CP001
MOTAMP/BLBS7S-2	MOTAMP/BLBS7S-2
34.1	33.1
50.0	47.0
40.0	40.0
FORWARD PAD/EQ	
zMMI.MO.FWPD11.0-0750.03zMMI.MO.FWEQSFE-0.01	
RETURN PAD/EQ	
zMMI.MO.RTPD11.0-0750.03zMMI.MO.RTEQSRE-1-S.01	
INTERSTAGE PAD/EQ	
2	
20.0	20.0
28.7	28.5
89.8V	A

PWR:	
DETMO02CA021	DETMO02CA021
DETMO02CP001	DETMO02CP001
MOTAMP/BLBS7S-2	MOTAMP/BLBS7S-2
38.7	31.0
50.0	47.0
40.0	40.0
FORWARD PAD/EQ	
zMMI.MO.FWPD14.0-0750.03zMMI.MO.CFEQSCS-4.01	
RETURN PAD/EQ	
zMMI.MO.RTPD06.0-0750.03zMMI.MO.RTEQSRE-1-S.01zMMI.MO.FWPD04.0-0750.03zMMI.MO.FWEQSFE-4.01	
INTERSTAGE PAD/EQ	
3	
20.0	20.0
29.9	29.0
89.8V	A

PWR:	
DETMO02CA022	DETMO02CA022
DETMO02CP001	DETMO02CP001
MOTAMP/BLBS7S-2	MOTAMP/BLBS7S-2
27.7	24.8
50.0	47.0
40.0	40.0
FORWARD PAD/EQ	
zMMI.MO.FWPD02.0-0750.03zMMI.MO.RTEQSRE-1-S.01	
RETURN PAD/EQ	
zMMI.MO.RTPD02.0-0750.03zMMI.MO.RTEQSRE-1-S.01	
INTERSTAGE PAD/EQ	
2	
20.0	20.0
28.5	27.5
89.8V	A

PWR:	
DETMO02CA020	DETMO02CA020
DETMO02CP001	DETMO02CP001
MOTAMP/BLBS7S-2	MOTAMP/BLBS7S-2
29.0	27.5
50.0	47.0
40.0	40.0
FORWARD PAD/EQ	
zMMI.MO.FWPD05.0-0750.03zMMI.MO.FWEQSFE-6.01	
RETURN PAD/EQ	
zMMI.MO.RTPD05.0-0750.03zMMI.MO.RTEQSRE-1-S.01	
INTERSTAGE PAD/EQ	
2	
20.0	20.0
28.2	27.0
89.8V	A

PWR:	
DETMO02CA011	DETMO02CA011
DETMO02CP001	DETMO02CP001
MOTAMP/BLBS7S-2	MOTAMP/BLBS7S-2
20.1	21.1
46.0	43.0
38.0	38.0
FORWARD PAD/EQ	
zMMI.MO.FWPD04.0-0750.02zMMI.MO.FWEQSFE-2.01	
RETURN PAD/EQ	
zMMI.MO.RTPD04.0-0750.02zMMI.MO.RTEQSRE-2-S.01	
INTERSTAGE PAD/EQ	
2	
20.0	20.0
34.5	33.0
89.8V	A

PWR:	
DETMO02CA015	DETMO02CA015
DETMO02CP001	DETMO02CP001
MOTAMP/BLBS7S-2	MOTAMP/BLBS7S-2
24.8	20.6
50.0	47.0
40.0	40.0
FORWARD PAD/EQ	
zMMI.MO.FWPD02.0-0750.03zMMI.MO.FWEQSFE-2.01	
RETURN PAD/EQ	
zMMI.MO.RTPD02.0-0750.03zMMI.MO.RTEQSRE-1-S.01	
INTERSTAGE PAD/EQ	
3	
20.0	20.0
28.4	28.8
89.8V	A

PWR:	
DETMO02CA012	DETMO02CA012
DETMO02CP001	DETMO02CP001
MOTAMP/BLBS7S-2	MOTAMP/BLBS7S-2
40.8	34.7

3  
4  
5  
6

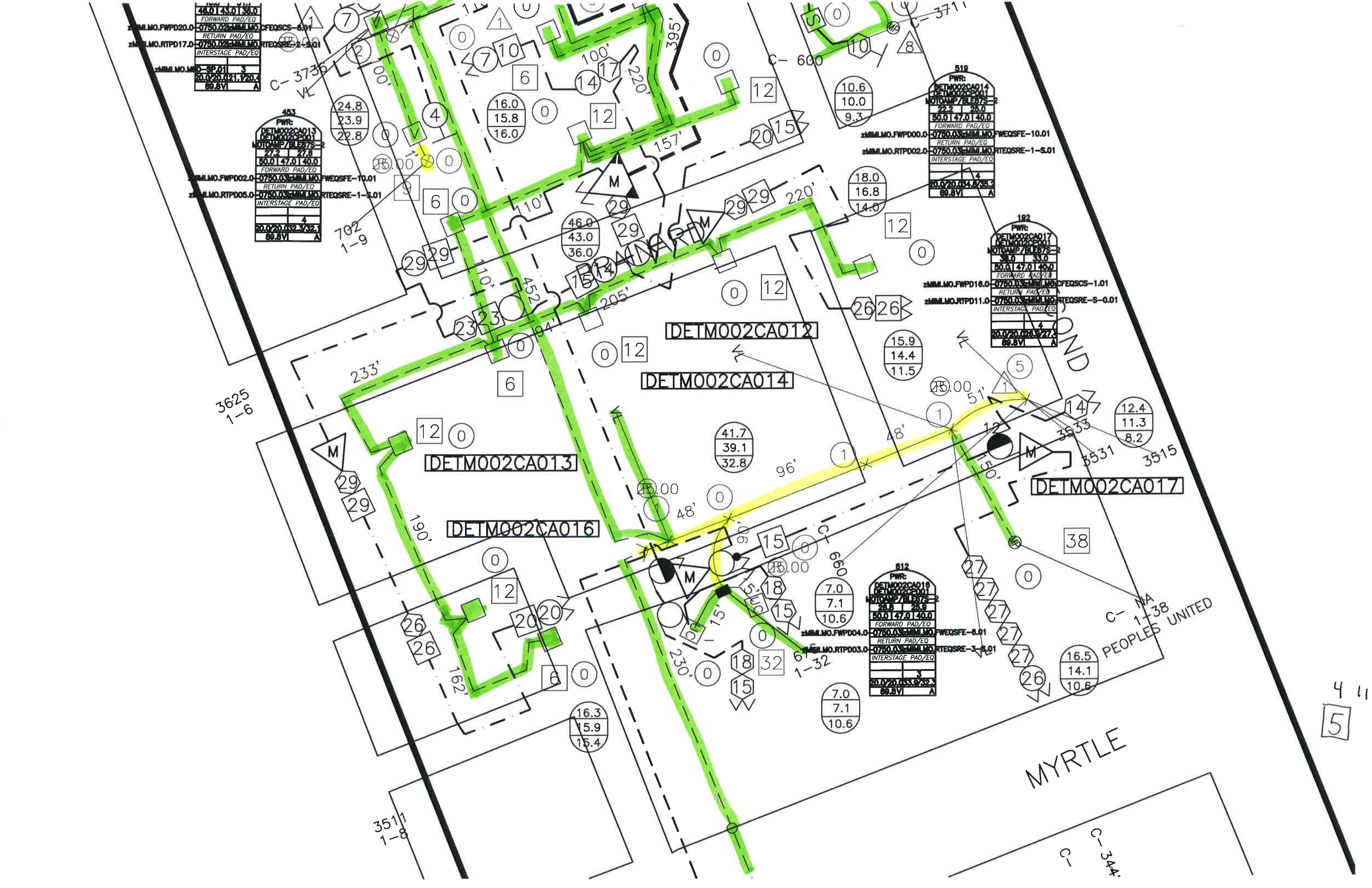
46.01	43.01	38.0
FORWARD PAD/EO		
zMMI.MO.FWPD20.0-0750.03zMMI.MO.CFEQSCS-8.01		
RETURN PAD/EO		
zMMI.MO.RTPD17.0-0750.03zMMI.MO.RTEQSRE-2-S.01		
INTERSTAGE PAD/EO		
zMMI.MO.MD-SP.01		
20.0/20.0/21.9/20.4		
69.8VI		
A		

453		
PWR:		
DETMO02CA013		
DETMO02CA001		
MOTAMP/BLBTS-2		
27.2	27.8	
50.0	47.0	40.0
FORWARD PAD/EO		
zMMI.MO.FWPD02.0-0750.03zMMI.MO.FWEQSFE-10.01		
RETURN PAD/EO		
zMMI.MO.RTPD05.0-0750.03zMMI.MO.RTEQSRE-1-S.01		
INTERSTAGE PAD/EO		
zMMI.MO.MD-SP.01		
20.0/20.0/21.9/20.4		
69.8VI		
A		

519		
PWR:		
DETMO02CA014		
DETMO02CA001		
MOTAMP/BLBTS-2		
22.2	28.0	
50.0	47.0	40.0
FORWARD PAD/EO		
zMMI.MO.FWPD00.0-0750.03zMMI.MO.FWEQSFE-10.01		
RETURN PAD/EO		
zMMI.MO.RTPD02.0-0750.03zMMI.MO.RTEQSRE-1-S.01		
INTERSTAGE PAD/EO		
zMMI.MO.MD-SP.01		
20.0/20.0/21.9/20.4		
69.8VI		
A		

182		
PWR:		
DETMO02CA017		
DETMO02CA001		
MOTAMP/BLBTS-2		
38.0	33.6	
50.0	47.0	40.0
FORWARD PAD/EO		
zMMI.MO.FWPD16.0-0750.03zMMI.MO.CFEQSCS-1.01		
RETURN PAD/EO		
zMMI.MO.RTPD11.0-0750.03zMMI.MO.RTEQSRE-S-0.01		
INTERSTAGE PAD/EO		
zMMI.MO.MD-SP.01		
20.0/20.0/21.9/20.4		
69.8VI		
A		

612		
PWR:		
DETMO02CA019		
DETMO02CA001		
MOTAMP/BLBTS-2		
28.8	28.9	
50.0	47.0	40.0
FORWARD PAD/EO		
zMMI.MO.FWPD04.0-0750.03zMMI.MO.FWEQSFE-8.01		
RETURN PAD/EO		
zMMI.MO.RTPD03.0-0750.03zMMI.MO.RTEQSRE-3-S.01		
INTERSTAGE PAD/EO		
zMMI.MO.MD-SP.01		
20.0/20.0/21.9/20.4		
69.8VI		
A		



DETM002CP002

MIDETM003

DETM003CP002

DETM003AP002

DETM002CA008

DETM003CP002  
DETM003AP002

3962  
1-48  
CENTURY

C- NA  
FIRE DEPT.

DETM003AA003

DETM003AA002

CHURCH  
BUILDING

EOL Val  
Not Matc  
With Sourc

DETM003

PARKING LOT

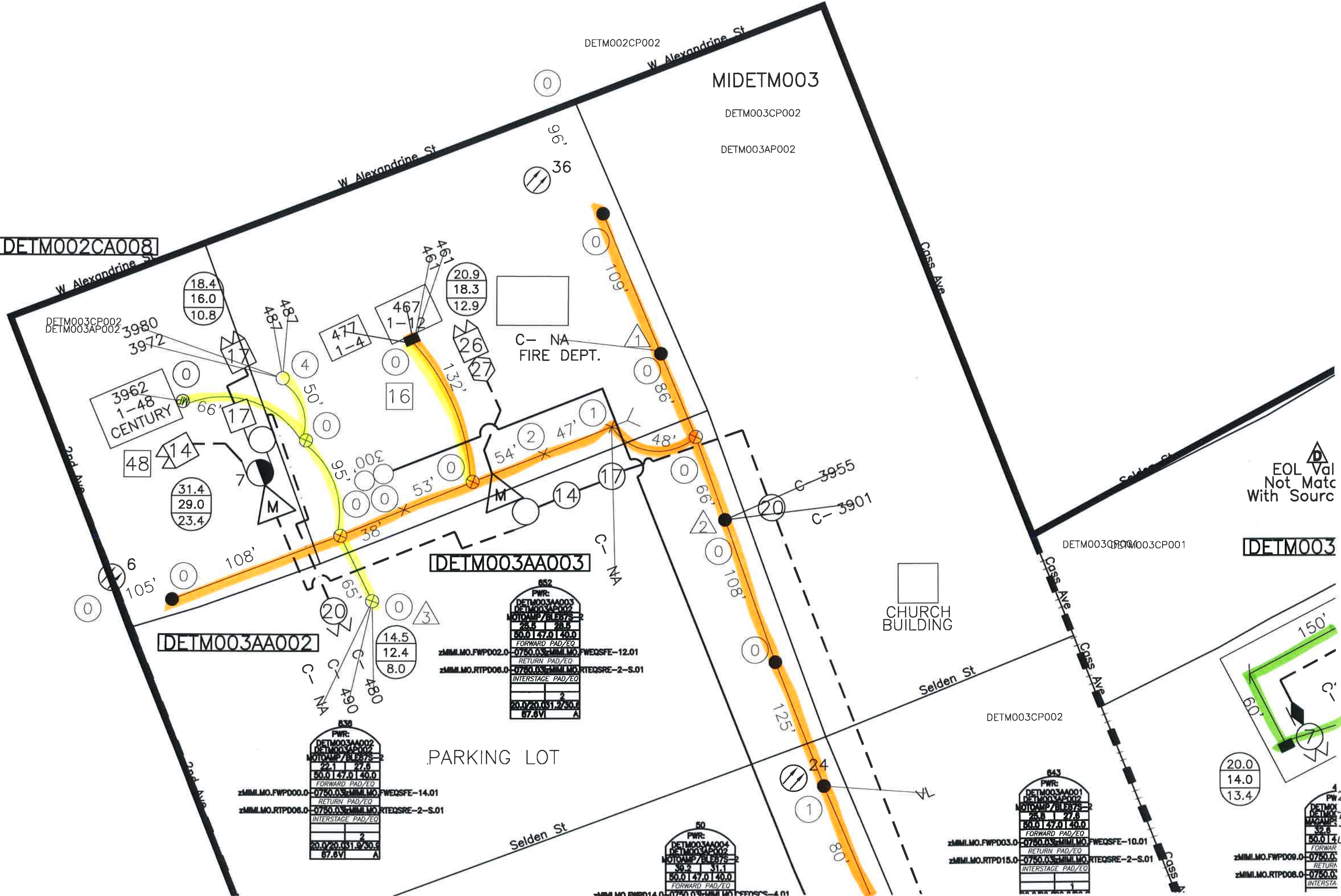
652  
PWR:  
DETM003AA003  
DETM003CP002  
NOT CAMP / BLEBS 2  
28.6 27.6  
50.0 | 47.0 | 40.0  
FORWARD PAD/EO  
zMMI.MO.FWPD02.0-0750.0 zMMI.MO.FWEQSFE-12.01  
RETURN PAD/EO  
zMMI.MO.RTPD06.0-0750.0 zMMI.MO.RTEQSRE-2-S.01  
INTERSTAGE PAD/EO  
2  
20.0 | 20.0 | 19.30.0  
67.6VI A

638  
PWR:  
DETM003AA002  
DETM003CP002  
NOT CAMP / BLEBS 2  
22.1 27.6  
50.0 | 47.0 | 40.0  
FORWARD PAD/EO  
zMMI.MO.FWPD00.0-0750.0 zMMI.MO.FWEQSFE-14.01  
RETURN PAD/EO  
zMMI.MO.RTPD06.0-0750.0 zMMI.MO.RTEQSRE-2-S.01  
INTERSTAGE PAD/EO  
2  
20.0 | 20.0 | 19.30.0  
67.6VI A

60  
PWR:  
DETM003AA004  
DETM003CP002  
NOT CAMP / BLEBS 2  
39.2 31.1  
50.0 | 47.0 | 40.0  
FORWARD PAD/EO  
zMMI.MO.FWPD14.0-0750.0 zMMI.MO.FWEQSFE-4.01  
RETURN PAD/EO  
zMMI.MO.RTPD08.0-0750.0 zMMI.MO.RTEQSRE-2-S.01  
INTERSTAGE PAD/EO  
1

643  
PWR:  
DETM003AA001  
DETM003CP002  
NOT CAMP / BLEBS 2  
28.6 27.6  
50.0 | 47.0 | 40.0  
FORWARD PAD/EO  
zMMI.MO.FWPD03.0-0750.0 zMMI.MO.FWEQSFE-10.01  
RETURN PAD/EO  
zMMI.MO.RTPD15.0-0750.0 zMMI.MO.RTEQSRE-2-S.01  
INTERSTAGE PAD/EO  
1

1  
PWR:  
DETM003AA005  
DETM003CP002  
NOT CAMP / BLEBS 2  
32.6 27.6  
50.0 | 47.0 | 40.0  
FORWARD PAD/EO  
zMMI.MO.FWPD09.0-0750.0  
RETURN PAD/EO  
zMMI.MO.RTPD08.0-0750.0  
INTERSTAGE PAD/EO  
1







5.9  
3.6  
9.7

4425  
1-14  
E COURT APTS.  
DETM002CP003

MIDETM007

W. CANFIELD

15.0  
15.2  
16.2

2.8  
1.5  
1.3

18.2  
16.7  
12.2

DETM002CA004

4263  
1-20  
KNICKER BOOKER  
DETM002CP004



DETM002DA008

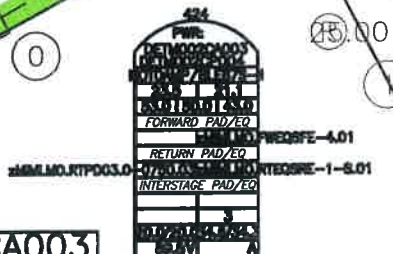
AND LOFTS

DETM002CP003

DETM002CP004

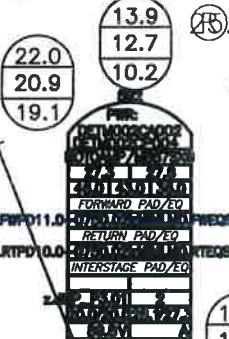


DETM002CA003



WILLIS

11.7  
11.3  
11.2



DETM002CA005

DETM002CA002

BILLINGHURST HOTEL

C- 4161

4145

WOODWARD

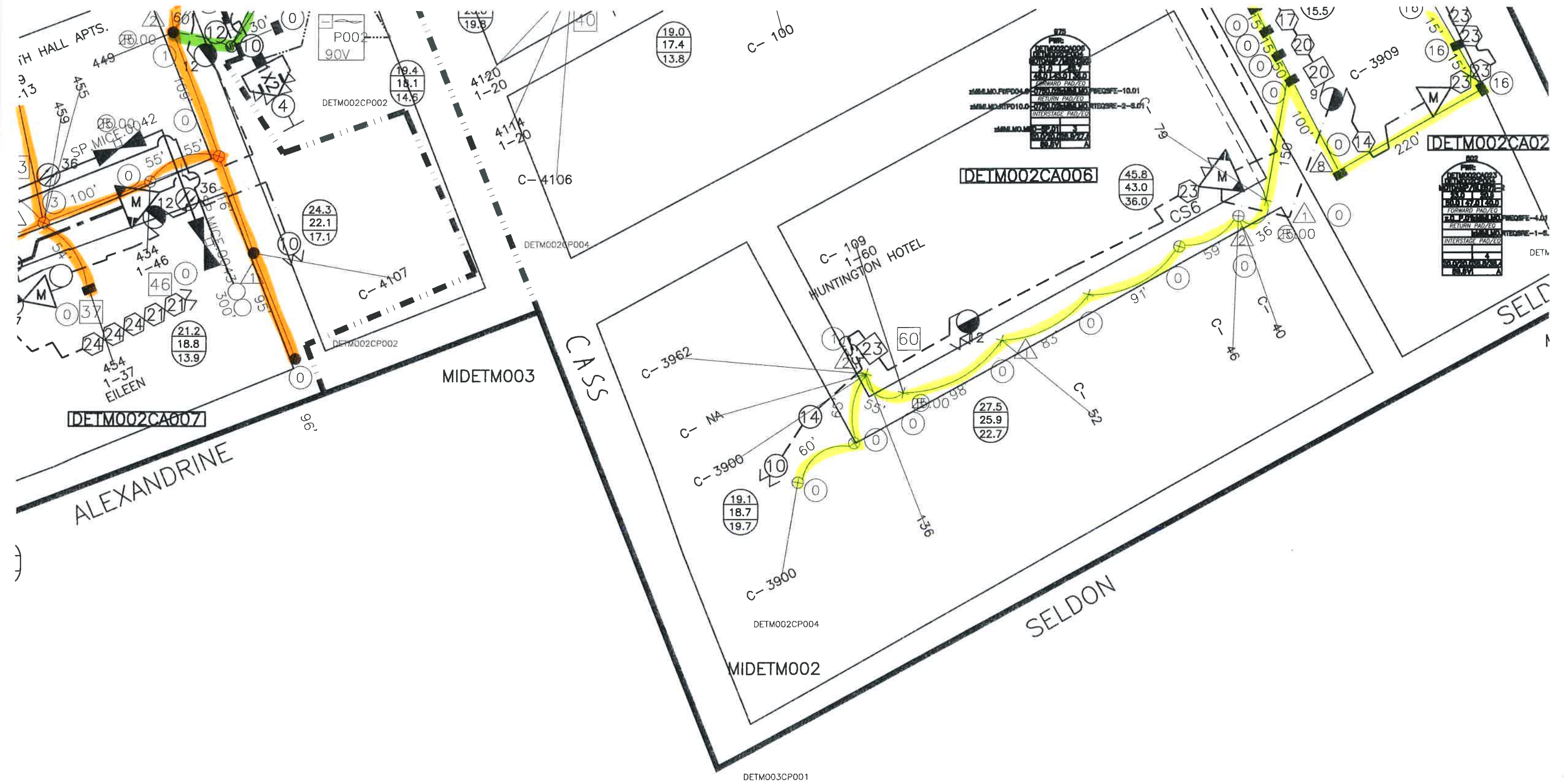
ALEXANDRINE

70  
1-185  
70 WEST APTS

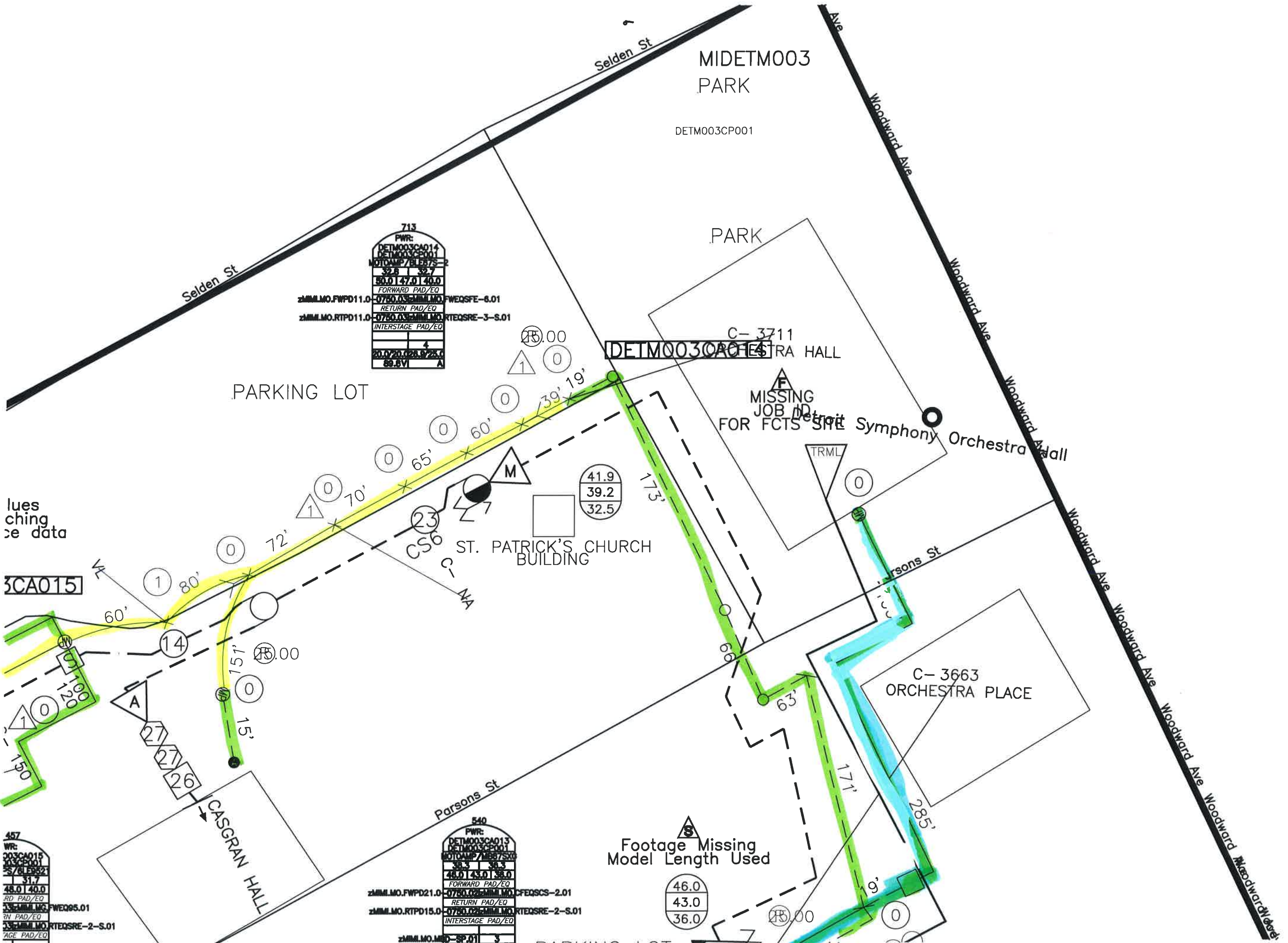
21.1  
20.6  
17.8

18.1  
17.4  
15.5

68



7  
68  
119



713  
PWR:

DETM003CA014
DETM003CP001
MOTAMP/BLB7S-2
39.6 32.7
50.0 147.0 140.0
FORWARD PAD/EO
zMM.LO.FWPD11.0-07/50.02/25.0 FWEQSFE-6.01
RETURN PAD/EO
zMM.LO.RTPD11.0-07/50.02/25.0 RTEQSRE-3-S.01
INTERSTAGE PAD/EO
4
50.0 20.0 25.0
66.6V A

DETM003CA015

3CA015

457  
PWR:

DETM003CA015
DETM003CP001
MOTAMP/BLB7S-2
31.7
48.0 140.0
RD PAD/EO
zMM.LO.MG.FWEQ95.01
IN PAD/EO
zMM.LO.RTEQSRE-2-S.01
AGE PAD/EO

540  
PWR:

DETM003CA013
DETM003CP001
MOTAMP/BLB7S-2
38.3 34.3
48.0 143.0 130.0
FORWARD PAD/EO
zMM.LO.FWPD21.0-07/50.02/25.0 CFEQSCS-2.01
RETURN PAD/EO
zMM.LO.RTPD15.0-07/50.02/25.0 RTEQSRE-2-S.01
INTERSTAGE PAD/EO
3
zMM.LO.MD-SP.01

Footage Missing  
Model Length Used

46.0
43.0
36.0

68  
11 9  
10

5
7,028.127.4
0VI A

20.0/20.0/23.4/22.2
89.8VI A

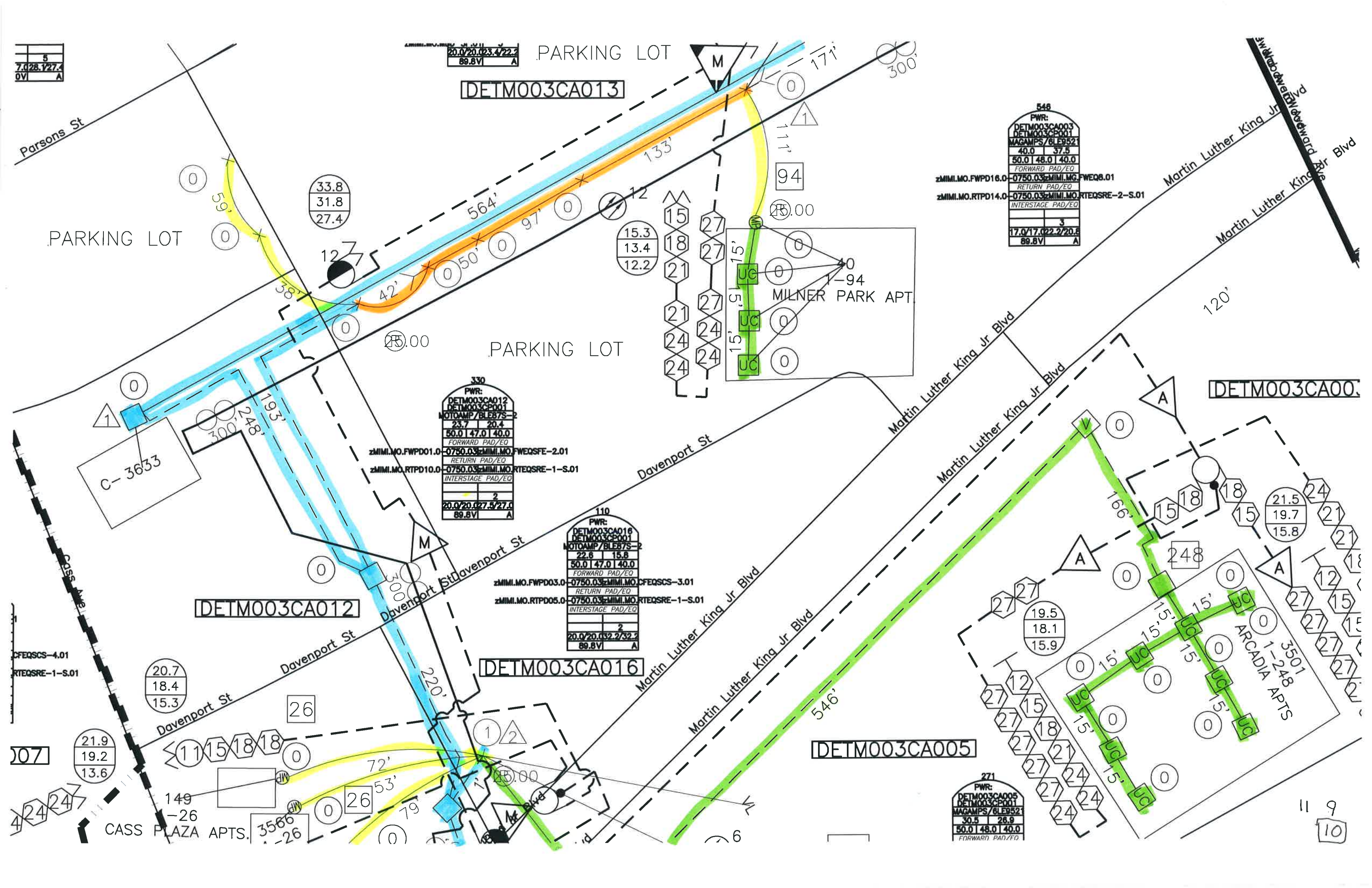
DETMO03CA013

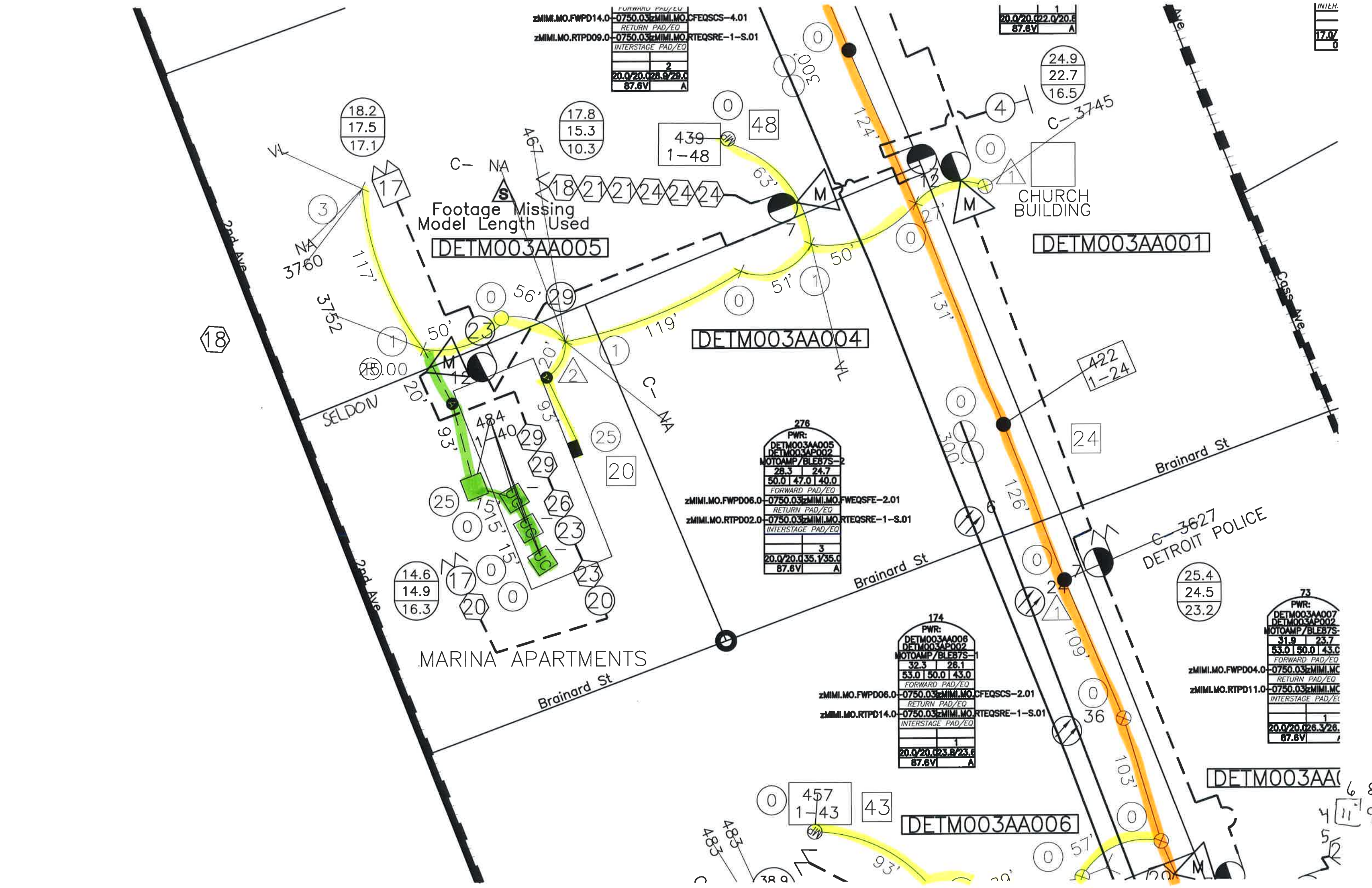
548
PWR:
DETMO03CA003
DETMO03CP001
MAGAMPS/6LE9521
40.0   37.5
50.0   48.0   40.0
FORWARD PAD/EO
zMIMI.MO.FWPD16.0-0750.03zMIMI.MO.FWEQ8.01
RETURN PAD/EO
zMIMI.MO.RTPD14.0-0750.03zMIMI.MO.RTEQSRE-2-S.01
INTERSTAGE PAD/EO
3
17.0/17.0/22.2/20.8
89.8VI A

330
PWR:
DETMO03CA012
DETMO03CP001
MOTDAMP/6LE87S-2
23.7   20.4
50.0   47.0   40.0
FORWARD PAD/EO
zMIMI.MO.FWPD01.0-0750.03zMIMI.MO.FWEQSFE-2.01
RETURN PAD/EO
zMIMI.MO.RTPD10.0-0750.03zMIMI.MO.RTEQSRE-1-S.01
INTERSTAGE PAD/EO
2
20.0/20.0/27.5/27.0
89.8VI A

110
PWR:
DETMO03CA016
DETMO03CP001
MOTDAMP/6LE87S-2
22.6   15.8
50.0   47.0   40.0
FORWARD PAD/EO
zMIMI.MO.FWPD03.0-0750.03zMIMI.MO.CFEQSCS-3.01
RETURN PAD/EO
zMIMI.MO.RTPD05.0-0750.03zMIMI.MO.RTEQSRE-1-S.01
INTERSTAGE PAD/EO
2
20.0/20.0/32.2/32.2
89.8VI A

271
PWR:
DETMO03CA005
DETMO03CP001
MAGAMPS/6LE9521
30.5   28.9
50.0   48.0   40.0
FORWARD PAD/EO





FORWARD PAD/EQ	
zMIMI.MO.FWPD14.0	-0750.03zMIMI.MO.CFEQSCS-4.01
RETURN PAD/EQ	
zMIMI.MO.RTPD09.0	
INTERSTAGE PAD/EQ	
2	
20.0/20.0/28.9/28.0	
87.6V	
A	

20.0/20.0/22.0/20.0	
87.6V	
A	

INLKR	
17.0	
0	

Footage Missing  
Model Length Used  
**DETM003AA005**

**DETM003AA001**

**DETM003AA004**

276	
PWR:	
DETM003AA005	
DETM003AP002	
MOTOAMP/BLEB7S-2	
28.3   24.7	
50.0   47.0   40.0	
FORWARD PAD/EQ	
zMIMI.MO.FWPD06.0	
-0750.03zMIMI.MO.FWEQSF-2.01	
RETURN PAD/EQ	
zMIMI.MO.RTPD02.0	
-0750.03zMIMI.MO.RTEQSR-1-S.01	
INTERSTAGE PAD/EQ	
3	
20.0/20.0/35.1/35.0	
87.6V	
A	

174	
PWR:	
DETM003AA006	
DETM003AP002	
MOTOAMP/BLEB7S-1	
32.3   28.1	
53.0   50.0   43.0	
FORWARD PAD/EQ	
zMIMI.MO.FWPD06.0	
-0750.03zMIMI.MO.CFEQSCS-2.01	
RETURN PAD/EQ	
zMIMI.MO.RTPD14.0	
-0750.03zMIMI.MO.RTEQSR-1-S.01	
INTERSTAGE PAD/EQ	
1	
20.0/20.0/23.8/23.6	
87.6V	
A	

73	
PWR:	
DETM003AA007	
DETM003AP002	
MOTOAMP/BLEB7S-	
31.9   23.7	
53.0   50.0   43.0	
FORWARD PAD/EQ	
zMIMI.MO.FWPD04.0	
-0750.03zMIMI.MO.CFEQSCS-2.01	
RETURN PAD/EQ	
zMIMI.MO.RTPD11.0	
-0750.03zMIMI.MO.RTEQSR-1-S.01	
INTERSTAGE PAD/EQ	
1	
20.0/20.0/26.3/26.0	
87.6V	
A	

**DETM003AA006**

**DETM003AA007**

18.2
17.5
17.1

17.8
15.3
10.3

24.9
22.7
16.5

14.6
14.9
16.3

25.4
24.5
23.2

457
1-43

68
4119
52