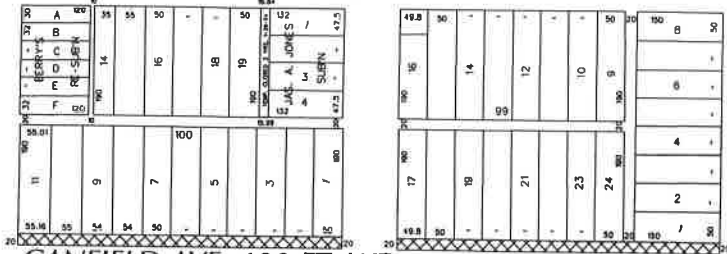


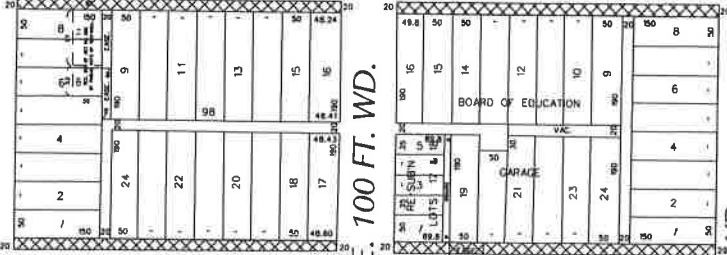
PETITION NO. 381
 GIFFELS WEBSTER
 28 W. ADAMS, SUITE 1200
 DETROIT, MICHIGAN 48226
 C/O JAMES FOSTER
 PHONE NO. 313 962-4442



PRENTIS AVE. 60 FT. WD.

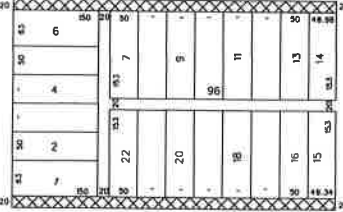


CANFIELD AVE. 100 FT. WD.

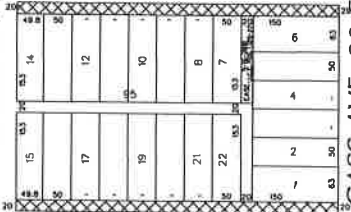


THIRD AVE. 70 FT. WD.

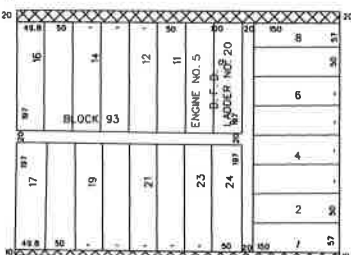
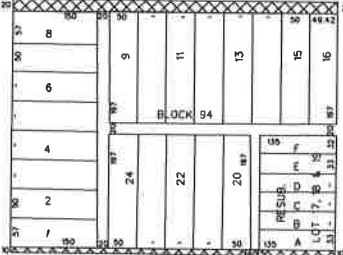
WILLIS AVE. 100 FT. WD.



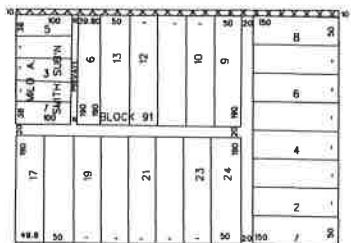
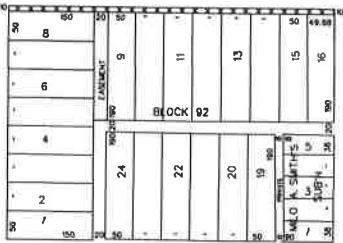
SECOND AVE. 100 FT. WD.



ALEXANDRINE AVE. 100 FT. WD.



SELDEN AVE. 100 FT. WD.



BRAINARD ST. 100 FT. WD.

CANFIELD AVE. 100 FT. WD.



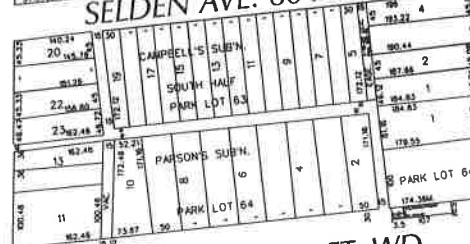
WILLIS AVE. 100 FT. WD.



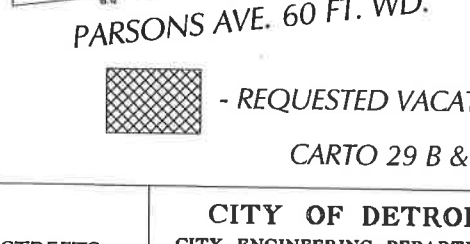
ALEXANDRINE AVE. 100 FT. WD.



SELDEN AVE. 60 FT. WD.



PARSONS AVE. 60 FT. WD.



WOODWARD AVE. 120 FT. WD.



- REQUESTED VACATION

(FOR OFFICE USE ONLY)

CARTO 29 B & 30 E

B					
A					
DESCRIPTION		DRWN	CHKD	APPD	DATE
REVISIONS					
DRAWN BY		CHECKED			
DATE		APPROVED			
09-10-14					

REQUEST TO VACATE
 VARIOUS PORTIONS OF PUBLIC STREETS,
 VARIOUS WIDTHS IN THE BLOCK BOUND BY
 THIRD, PRENTIS, WOODWARD AVE.
 AND BRAINARD ST.

CITY OF DETROIT	
CITY ENGINEERING DEPARTMENT	
SURVEY BUREAU	
JOB NO.	01-01
DRWG. NO.	X 381