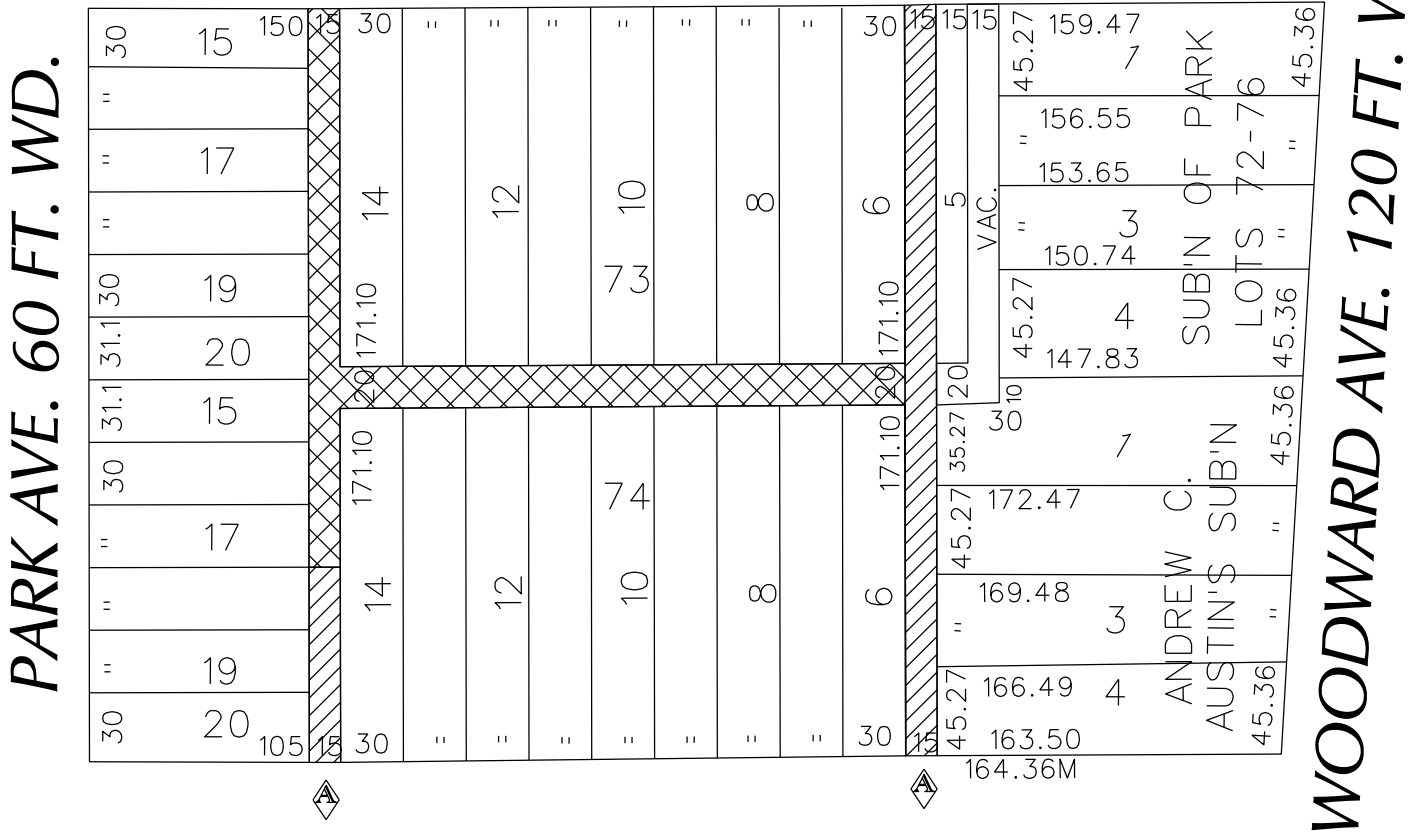


PETITION NO. 380
 GIFFELS WEBSTER
 28 W. ADAMS, SUITE 1200
 DETROIT, MICHIGAN 48226
 C/O MICHAEL MARKS
 PHONE NO. 313 962-4442

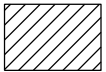


"REVISED"

CHARLOTTE AVE. 60 FT. WD.



TEMPLE AVE. 60 FT. WD.



- REQUESTED CONVERSION TO EASEMENT



- REQUESTED VACATION

(FOR OFFICE USE ONLY)

CARTO 29 B

REQUEST TO VACATE						CITY OF DETROIT	
THE EAST/WEST PUBLIC ALLEY 20 FT. WD. AND A PORTION OF						CITY ENGINEERING DEPARTMENT	
THE NORTH/SOUTH PUBLIC ALLEY 15 FT. WD. AND						SURVEY BUREAU	
CONVERSION TO EASEMENT OF THE REMAINING						JOB NO.	01-01
PUBLIC ALLEYS VARIOUS WIDTHS IN THE BLOCK BOUND BY						DRWG. NO.	X 380
TEMPLE, PARK, CHARLOTTE							
AND WOODWARD AVE.							
B							
A	REVISED: TO REQUEST AN CONVERSION TO EASEMENT REQUESTED ON 5/26/2015.	WLW	KSM	KSM	5/26/15		
DESCRIPTION		DRWN	CHKD	APPD	DATE		
REVISIONS							
DRAWN BY		WLW		CHECKED			
DATE		05-26-15		APPROVED			