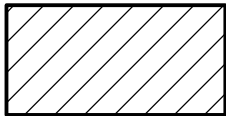
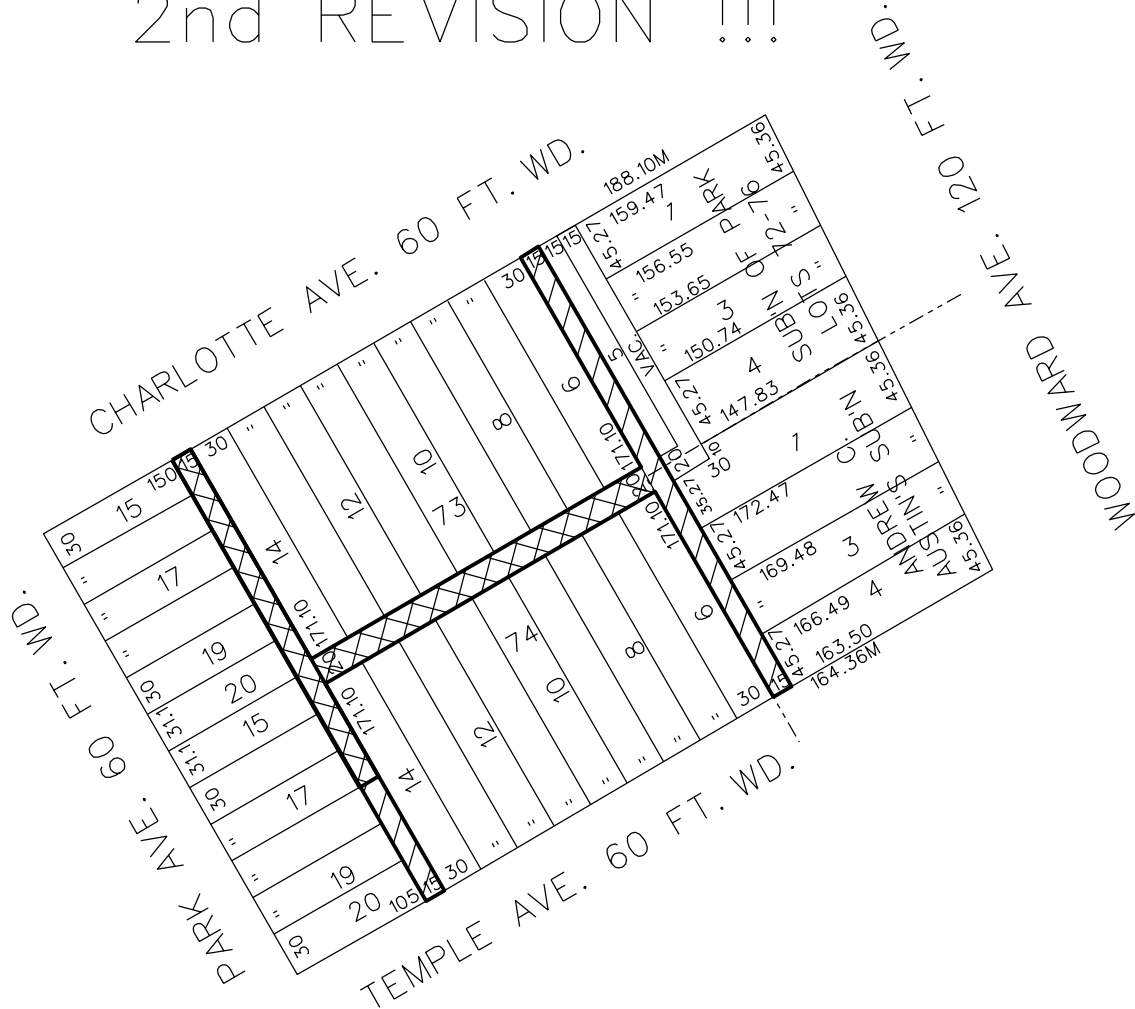


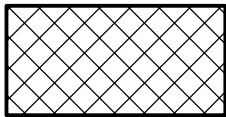
PETITION NO. 380
 GIFFELS WEBSTER
 28 W. ADAMS SUITE 1200
 DETROIT, MICH. 48226
 ATT: MICHAEL MARKS
 PHONE: 313-962-4442



2nd REVISION !!!



REQUESTED CONVERSION TO EASEMENT



REQUESTED OUTRIGHT VACATION

CARTOGRAPHIC MAP NO. 29-B

(FOR OFFICE USE ONLY)

B	VAC & EASE				5/19/15
A	CONV TO EASE				5/5/15
DESCRIPTION		DRWN	CHKD	APPD	DATE
REVISIONS					
DRAWN BY		CHECKED			
DATE		APPROVED			
AUG. 19, 2014					

REQUEST TO OUTRIGHT VACATE THE EAST-WEST PUBLIC ALLEY 20 FT. WD., AND A PORTION OF THE NORTH-SOUTH PUBLIC ALLEY 15 FT. WD., AND THE CONVERSION TO EASEMENT OF THE REMAINING PUBLIC ALLEYS, ALL IN THE BLOCK BOUNDED CHARLOTTE, TEMPLE, PARK AND WOODWARD AVENUES.

CITY OF DETROIT	
CITY ENGINEERING DEPARTMENT	
SURVEY BUREAU	
JOB NO.	01-01
DRWG. NO.	X-380.DGN