



City of Detroit
Inter-Departmental Communication

TO: Richard Doherty, City Engineer
City Engineering/Department of Public Works

FROM: Debra Singleton, Manager II
Detroit Water and Sewerage Department

DATE: August 29, 2014

RE: Petition No. 374
Request for Conversion to Easement of a Portion of Scotten Ave. in the Block
Bound by Clark St., Michigan Ave., Michigan Central R.R. and New York R.R.

The above Petition received by this office on August 21, 2014 has been reviewed. With regard to DWSD's interests, our comment is as follows:

- Our records indicate that there are water mains and a sewer in Scotten. However, DWSD has no objection to the conversion to easement provided that the attached Provisions for Conversion to Easement are strictly followed.

If you have any questions, please call me at (313) 267-8309.

Sincerely,

Debra Singleton
Manager II
Claims and Permits

DES/gj
Attachments

CC: Cheryl Porter, WBB
Mohamad Farhat, CSF

City of Detroit
City Engineering Division, Department of Public Works
Survey Bureau

NOTICE OF PROPOSED CHANGE IN PROPERTY

Date: 08/20/2014

Petition: x374

- | | |
|---|--|
| <input type="checkbox"/> AT&T Telecommunication | |
| <input type="checkbox"/> Cable Television (CATV) | <input type="checkbox"/> Vacation |
| <input type="checkbox"/> Detroit Edison (DTE) | |
| <input type="checkbox"/> Michigan Consolidated Gas (DTE) | <input checked="" type="checkbox"/> Conversion to Easement |
| <input type="checkbox"/> Fire Department | <input type="checkbox"/> Dedication |
| <input type="checkbox"/> Planning & Development Department | |
| <input type="checkbox"/> Public Lighting Dept. - Communication Division | <input type="checkbox"/> Encroachment |
| <input type="checkbox"/> Public Lighting Dept. - Overhead Line Division | |
| <input type="checkbox"/> Public Lighting Dept. - Underground Division | <input type="checkbox"/> Temporary Closing |
| <input type="checkbox"/> Police Department | |
| <input type="checkbox"/> Recreation Department | <input type="checkbox"/> Berm Use |
| <input type="checkbox"/> Sanitation Division, DPW | |
| <input type="checkbox"/> Street Design Bureau, DPW | |
| <input type="checkbox"/> Street Maintenance Division, DPW | |
| <input type="checkbox"/> Street and Traffic Division, DPW | |
| <input type="checkbox"/> Water and Sewerage Dept. - Sewer Design | |
| <input type="checkbox"/> Water and Sewerage Dept. - Water Design | |

A petition drawing is attached. Property shown on the attached print is proposed to be changed as indicated.

Kindly report (using the back of this sheet) the nature of your services (if any) affected by the proposed change and the estimated costs of removing and rerouting such services (if necessary).

Please return one copy to City Engineering Division, DPW. Retain one copy and print for you file.

Alfred Jordan, Director, Department of Public Works

By: Richard Doherty, CED DPW
Head Engineer

**TO: City Engineering Division, DPW
65 Cadillac Square, Suite 900
Detroit, Michigan 48226-2873
Survey Bureau: 313-224-3970**

x374

The proposed change in property (referred to on the other side of this sheet) would affect our services as follows:

- Not Involved
- Involved; but asking you to hold action on this petition until further notice.
- Involved; but no objections to the property change .
- Involved; but no objections to the property change...provided as easement of the full width of the public right-of-way (street, alley or other public place) is reserved.
- Involved; the nature of our services, and the estimated costs of removing and/or rerouting such services are:

(Utility or City Department)

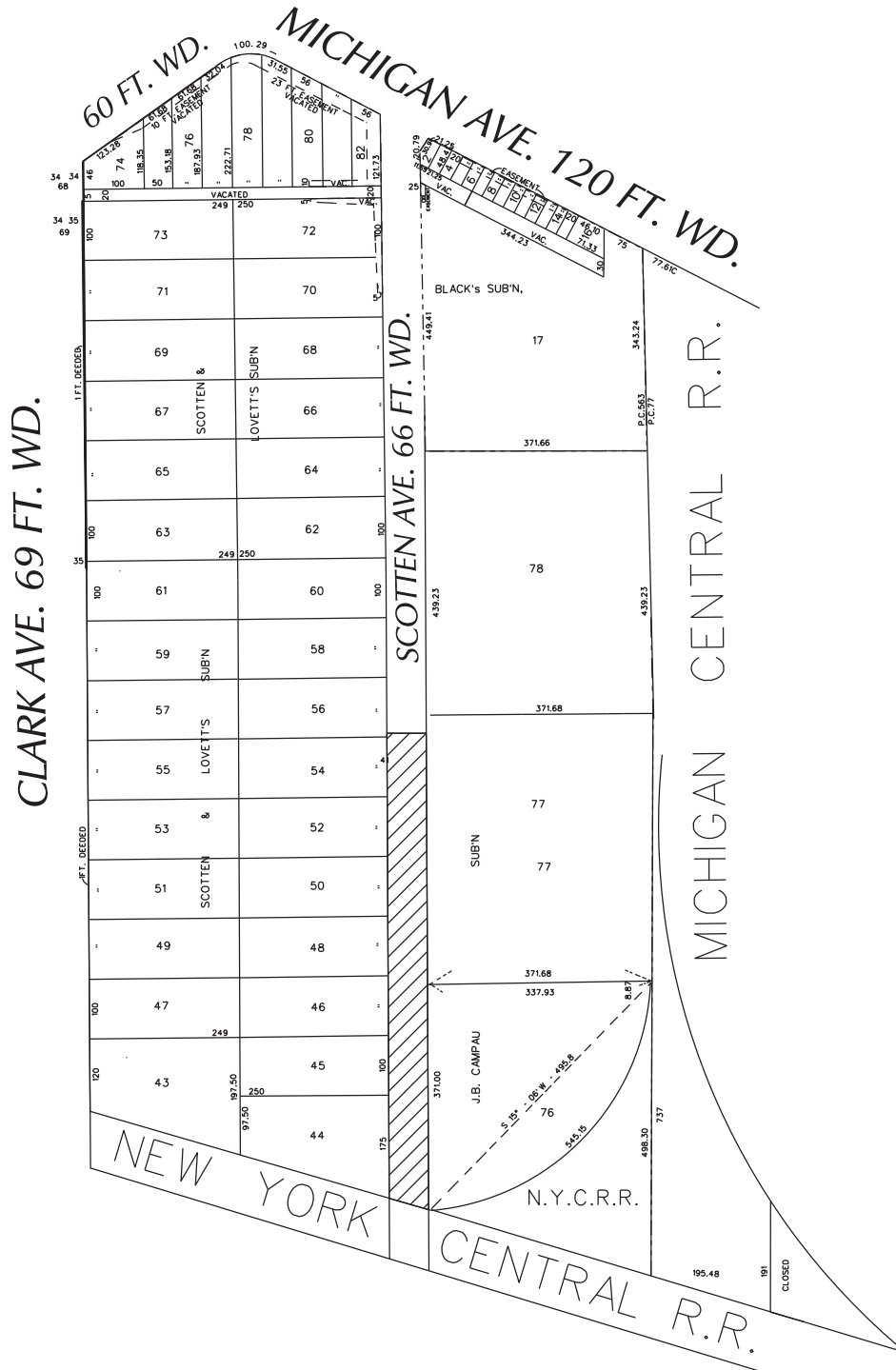
By

Title

Date

Area code – Telephone number

PETITION NO. 374
 GENERAL DEVELOPMENT COMPANY LLC
 C/O CHRYSLER CORPORATION
 TWO TOWER SQUARE, SUITE 850
 SOUTHFIELD, MICHIGAN 48078
 C/O BRUCE BRICKMAN
 PHONE NO. 248 514-7111

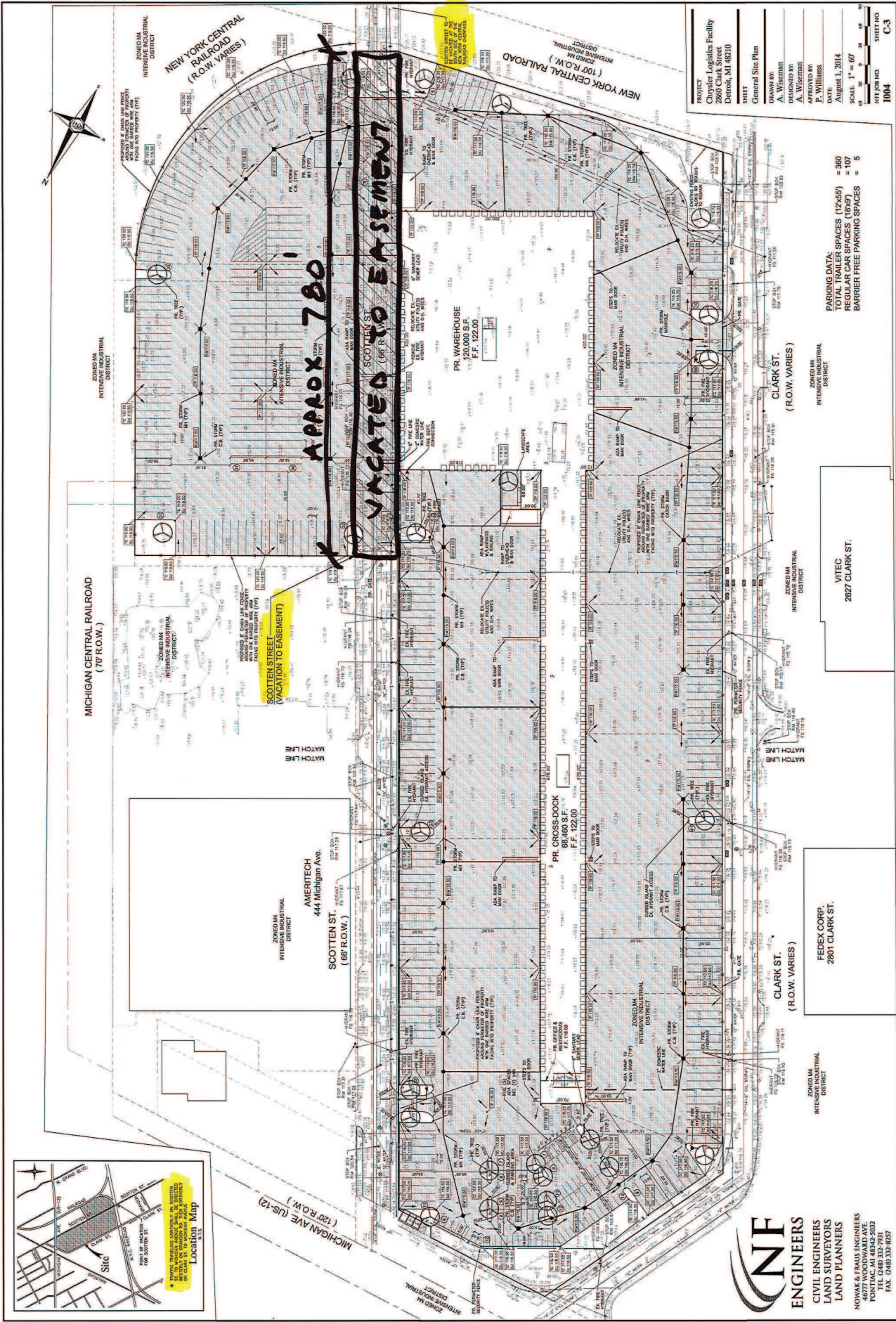


- REQUESTED CONVERSION TO EASEMENT

(FOR OFFICE USE ONLY)

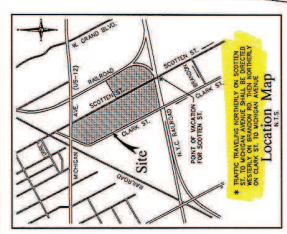
CARTO 12 A & F, 19 C & D

B					REQUEST TO CONVERT TO EASEMENT A PORTION OF SCOTTEN AVE. 780 FT. 66 FT. WD. IN THE BLOCK BOUND BY CLARK, MICHIGAN AVE., MICHIGAN CENTRAL R.R. AND NEW YORK CITY R.R.	CITY OF DETROIT CITY ENGINEERING DEPARTMENT SURVEY BUREAU
	A					
DESCRIPTION		DRWN	CHKD	APPD	DATE	JOB NO. 01-01
DRAWN BY WLW		CHECKED				
DATE 08-20-14		APPROVED				



PROJECT	Chrysler Logistics Facility
DESIGNED BY	A. Wiseman
DATE	August 1, 2014
SCALE	1" = 60'
PROJECT NO.	1004
SHEET NO.	C-3

PARKING DATA:
 TOTAL TRAILER SPACES (12x45') = 360
 REGULAR CAR SPACES (18x42') = 107
 BARRIER FREE PARKING SPACES = 5



NF ENGINEERS
 CIVIL ENGINEERS
 LAND SURVEYORS
 LAND PLANNERS

NOWAK & FRANK ENGINEERS
 10000 W. GRAND BLVD.
 FARMINGTON HILLS, MI 48334-2032
 TEL: (248) 332-7931
 FAX: (248) 332-8257

PROVISIONS FOR CONVERSION TO EASEMENT

1. An easement, the full width of the existing right of way, is reserved for the Detroit Water and Sewerage Department for the purpose of installing, maintaining, repairing, removing, or replacing any sewers, water mains, fire hydrants and appurtenances, with the right of ingress and egress at any time to, and over said easement for the purpose above set forth.

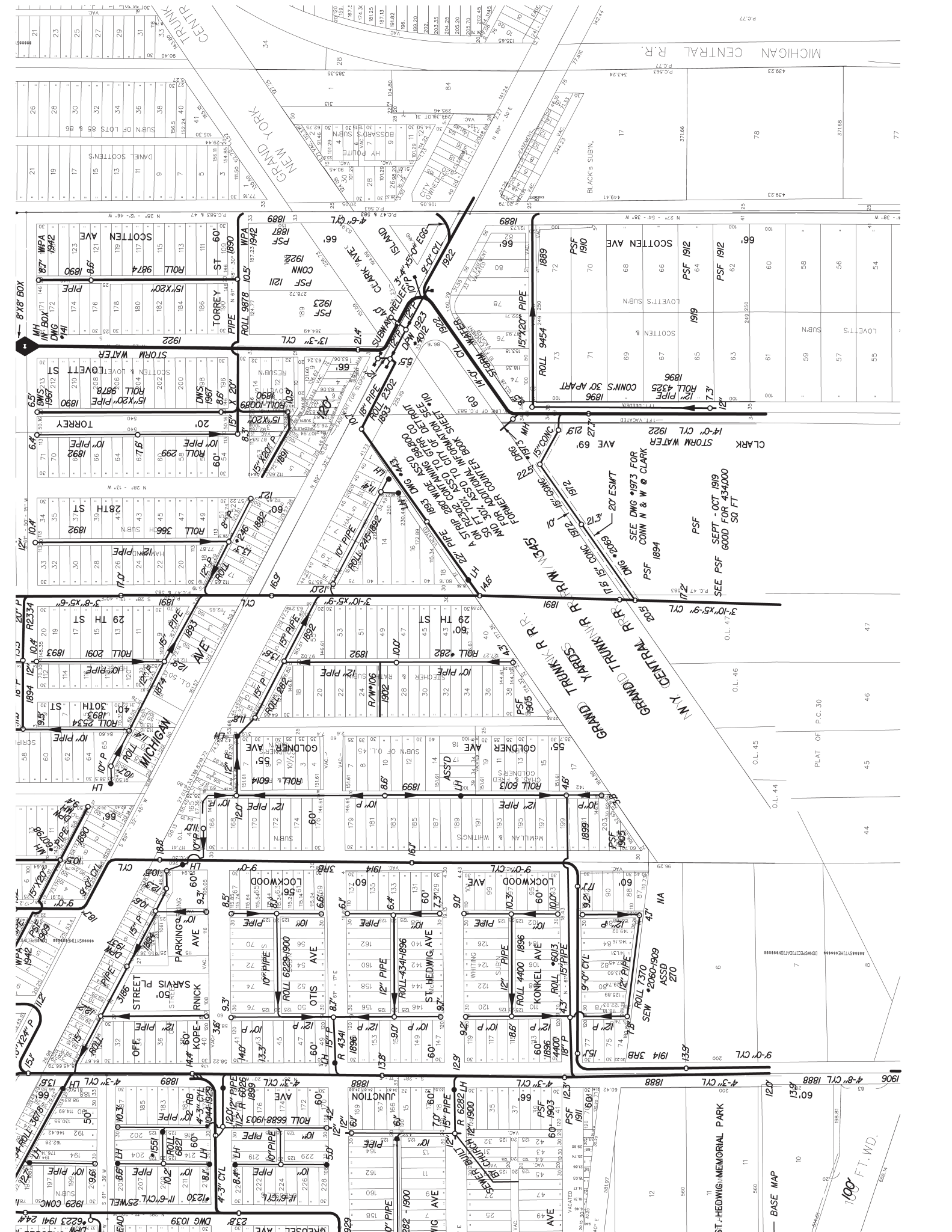
Free and easy access to the sewers, water mains, fire hydrants and appurtenances within the easement is required for Detroit Water and Sewerage Department equipment, including the use of backhoes, bull dozers, cranes or pipe trucks, and other heavy construction equipment, as necessary for the alteration or repair of the sewer or water main facilities.

The Detroit Water and Sewerage Department retains the right to install suitable permanent main location guide posts over its water mains at reasonable intervals and at points of deflection.

2. Said owners of the adjoining property, for themselves, their heirs and assigns, agree that no building or structure of any nature whatsoever, including fences, porches, patios, balconies, etc., shall be built upon or over said easement, or that no grade changes or storage of materials shall be made within said easement without prior written approval and agreement with the Detroit Water and Sewerage Department.
3. If at any time in the future, the owners of any lots abutting on said vacated right of way shall request the removal and/or relocation of the aforementioned utilities in said easement, such owners shall pay all costs incident to such removal and/or relocation. It is further provided that if sewers, water mains, and/or appurtenances in said easement shall break or be damaged as a result of any action on the part of the owner, or assigns, then in such event, the owner or assigns shall be liable for all costs incident to the repair of such broken or damaged sewers and water mains, and shall also be liable for all claims for damages resulting from his action.

These provisions shall be made part of the City Council's Vacating Resolution.

04/08/13



100' FT. W.D.
BASE MAP

ST. HEDWIG MEMORIAL PARK
BRUSH SUBN.

120' 13.8'
60' 13.8'
120' 13.8'
60' 13.8'

120' 13.8'
60' 13.8'
120' 13.8'
60' 13.8'

120' 13.8'
60' 13.8'
120' 13.8'
60' 13.8'

120' 13.8'
60' 13.8'
120' 13.8'
60' 13.8'

120' 13.8'
60' 13.8'
120' 13.8'
60' 13.8'

120' 13.8'
60' 13.8'
120' 13.8'
60' 13.8'

120' 13.8'
60' 13.8'
120' 13.8'
60' 13.8'

120' 13.8'
60' 13.8'
120' 13.8'
60' 13.8'

120' 13.8'
60' 13.8'
120' 13.8'
60' 13.8'

120' 13.8'
60' 13.8'
120' 13.8'
60' 13.8'

120' 13.8'
60' 13.8'
120' 13.8'
60' 13.8'

120' 13.8'
60' 13.8'
120' 13.8'
60' 13.8'

120' 13.8'
60' 13.8'
120' 13.8'
60' 13.8'

120' 13.8'
60' 13.8'
120' 13.8'
60' 13.8'

120' 13.8'
60' 13.8'
120' 13.8'
60' 13.8'

120' 13.8'
60' 13.8'
120' 13.8'
60' 13.8'

120' 13.8'
60' 13.8'
120' 13.8'
60' 13.8'

