

# FAX TRANSMITTAL

## Office of the City Clerk

Coleman A Young Municipal Center  
Two Woodward Avenue, Suite 200  
Detroit, Michigan 48226  
Telephone: (313) 224-2070 Fax: (313) 224-2075

Friday, August 15, 2014

No. of Pages 5

FROM: *Mr. Andre Gilbert II, Junior Assistant City Council Committee Clerk*

SUBJECT: *Petition #374, General Development Company, request of a "Vacation to Easement" for a portion of Scotten Road near Clark Street and Michigan Ave., in the Clark Street Industrial Park.*

### FAX TO THE FOLLOWING DEPARTMENT(S):

Mr. Richard Doherty, City Engineer

DPW - City Engineering Division

(313) 224-1464

David Bell, Building Official

Buildings Safety Engineering

(313) 224-1467

Attachment

12A 12F  
93 94  
19c 19d  
74 73

8/19

**City of Detroit**  
OFFICE OF THE CITY CLERK

Janice M. Winfrey  
City Clerk

Robin R. Underwood, CMC  
Deputy City Clerk

**DEPARTMENTAL REFERENCE COMMUNICATION**

*Friday, August 15, 2014*

*To: The Department or Commission Listed Below*

*From: Janice M. Winfrey, Detroit City Clerk*

---

The following petition is herewith referred to you for report and recommendation to the City Council.

In accordance with that body's directive, kindly return the same with your report in duplicate within four (4) weeks.

---

LEGISLATIVE POLICY DIVISION    LAW DEPARTMENT  
FINANCE DEPT/ASSESSMENTS DIV.    PLANNING AND DEVELOPMENT DEPARTMENT

**350**    *Peter Allen & Associates, request for the establishment of an Obsolete Property Rehabilitation District at 6402 Woodward Avenue, Detroit, MI 48202.*

**NOTE:**    **The Detroit City Council is on recess from:**  
**TUESDAY, JULY 29, 2014 through FRIDAY, AUGUST 29, 2014**

**The City Clerk requests that Departments directly handle requests which fall within those dates.**

**PLEASE EXPEDITE!!!**



To: The Honorable City Council  
Attn: Office of the City Clerk  
200 Coleman A. Young Municipal Center  
Detroit, MI 48226

RE: Chrysler Logistics Facility Clark Street, Detroit, MI

General Development Company is a commercial and industrial real estate development company. General Development (GDC) is working with Chrysler Corporation LLC to build a new 190,000 square foot Logistics Facility located at the corner of Clark Street and Michigan Avenue, in the Clark Street Industrial Park. We are contacting the Detroit City Council for approval of a "Vacation to Easement" for a portion of Scotten Road. As you will see on the attached site plan the location of the proposed "Vacation to Easement" will be on Scotten Road just north of the New York Central rail road tracks. GDC requests that the street vacation occurs shortly after the start of construction currently scheduled for October 2014. In order for Chrysler to locate to this specific site, and put their project in the City of Detroit, a portion of Scotten Road needs to be vacated as shown on the attached plan. This is a "Vacation to Easement" as the utilities in the road can remain, and will be put into the easement.

Vacating Scotten north of the railroad tracks will have no adverse effect on traffic. If someone is heading north on Scotten attempting to access Michigan Avenue, they will now turn west on Brandon Road, then north onto Clark Street to access Michigan Avenue. Attached you will also find a support letter from Chrysler Corporation LLC explaining the project as well as to why they require the "Vacation to Easement" on Scotten Road. If you require any more additional information please contact Ethan Weisman or Bruce Brickman directly. Your expeditious handling of this request would be greatly appreciated.

Ethan Weisman  
[EthanW@gcndev.com](mailto:EthanW@gcndev.com)  
Cell: (248) 514-1169

Bruce Brickman  
[BruceB@gcndev.com](mailto:BruceB@gcndev.com)  
Cell: (248) 514-7111

Sincerely,

Ethan Weisman

cc: Helen M. Broughton  
Performance Government Consultant  
Detroit Corridor Initiative  
2 Woodward Avenue - Room 407  
Detroit, Michigan 48226

CITY CLERK 15 AUG 2014 PM 2:54

GENERAL DEVELOPMENT COMPANY, L.L.C.  
TWO TOWNE SQUARE, SUITE 850  
SOUTHFIELD MICHIGAN 48078  
248-357-3777 • FAX 248-357-1020



August 5, 2014

Detroit City Council  
2 Woodward  
Detroit, Michigan 48226

RE: Clark Street Industrial Park

Dear Honorable City of Detroit Council Members:

Chrysler Group LLC is in the process of finalizing plans with General Development Company to erect a 190,000 square foot logistics facility at the corner of Clark Street and Michigan Avenue in the Clark Street Industrial Park.

As part of the construction, a portion of the parking lot would lie over Scotten Street (see attached drawing), and will have to be vacated. Please review the engineered drawings published by Nowak and Fraus engineers which are attached. The drawing shows the location of the parking lot on Scotten, as well as the location where the street vacation will take place. If you have any additional questions or comments please contact me at 248-576-8583 at your earliest convenience.

Sincerely,  
Chrysler Group LLC

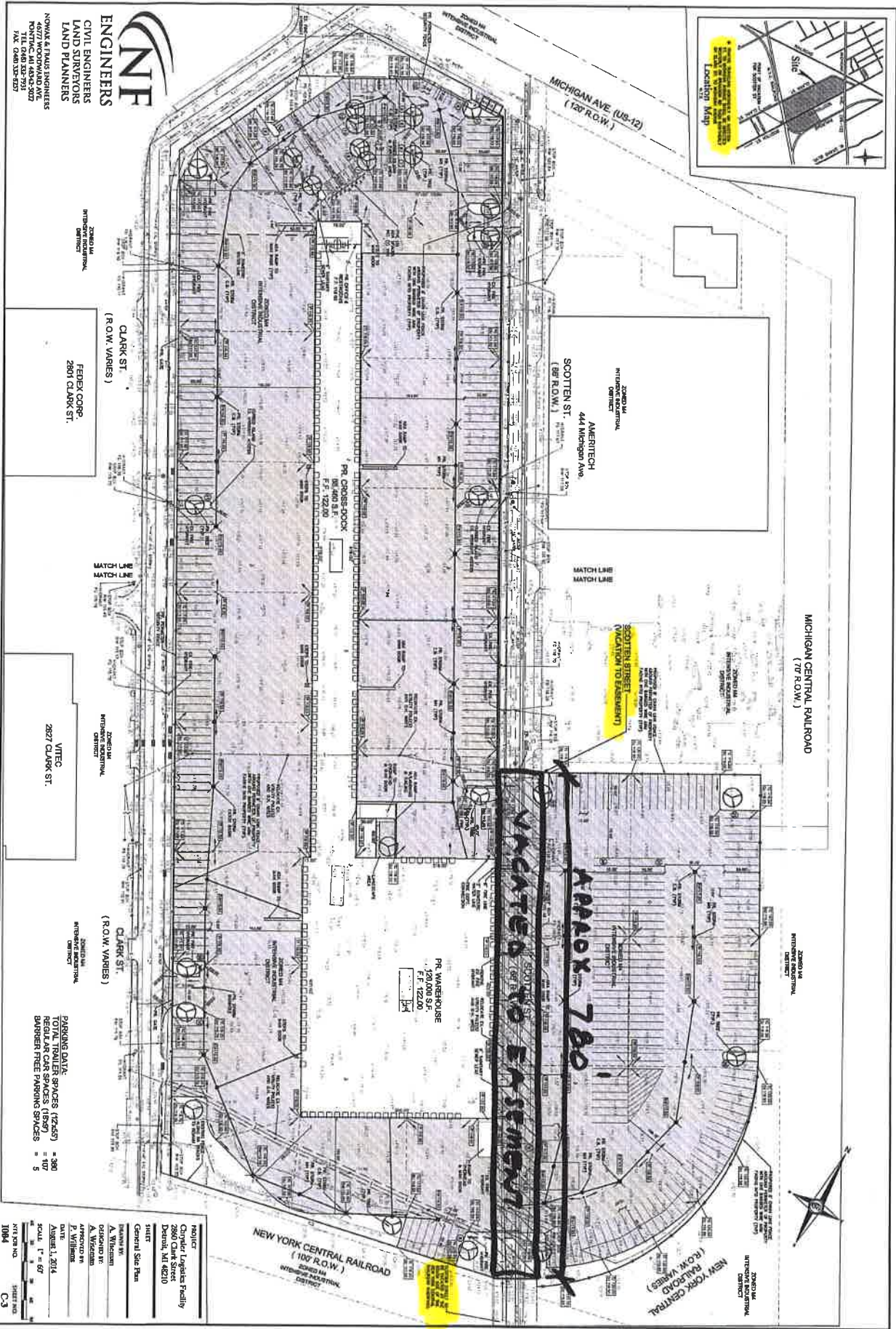
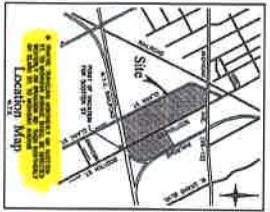
A handwritten signature in black ink, appearing to read "Tony Jergovich".

Tony Jergovich  
Material Logistics RILC Operations Manager  
Parts and Material Transportation

Cc: General Development Company  
Chrysler Group LLC Real Estate

CITY CLERK 15 AUG 2014 PM2:54





Project	Cylinder Logistics Facility
Address	2800 Clark Street Detroit, MI 48210
Sheet	General Site Plan
Drawn by	A. Whelan
Checked by	A. Whelan
Approved by	J. Whelan
Date	August 1, 2014
Scale	1" = 60'
Project No.	1004
Sheet No.	C3