



CITY OF DETROIT
CITY ENGINEERING DIVISION
DEPARTMENT OF PUBLIC WORKS

COLEMAN A YOUNG MUNICIPAL CENTER
SUITE 601
TWO WOODWARD AVENUE
DETROIT, MICHIGAN 48226-3473
PHONE 313 • 224 • 3949
FAX 313 • 224 • 3471

April 13, 2015

Honorable City Council:

RE: Petition No. 374, General Development Company, request of "Vacation to Easement" for a portion of Scotten Avenue near Clark Street and Michigan Avenue.

Petition No. 374 of General Development Company request to vacate and convert to easement a part of Scotten Avenue, 66 feet wide, lying south of Michigan Avenue, 120 feet wide and north of Brandon Avenue, 60 feet wide.

The petition was referred to the City Engineering Division – DPW for investigation (utility review) and report. This is our report.

The requested closure of Scotten Avenue was made to facilitate an industrial real estate development. General Development Company is working with Chrysler Corporation LLC. to build a new 190,000 square feet Logistics Facility in the Clark Street Industrial Park.

Department of Public Works – Traffic Engineering Division (TED) initially objected to the vacation and conversion to easement of the requested portion of Scotten Avenue, because the closure would cause a dead end situation to the traffic on Scotten Avenue. The requested closure was revised to a temporary closure of Scotten Avenue, and TED had no objection to the temporary closure provided certain conditions were met.

The General Development Company and Chrysler Corporation LLC found the terms of the closure unacceptable. General Development Company redesigned the proposed development on private property making the closure of Scotten Avenue unnecessary.

Whereas, the Petitioner no longer requires the Street closure for the development;
Therefore, City Engineering Division – DPW recommends **DENIAL** of this petition request.

Respectfully submitted,


Richard Doherty, P.E., City Engineer
City Engineering Division – DPW

JK/

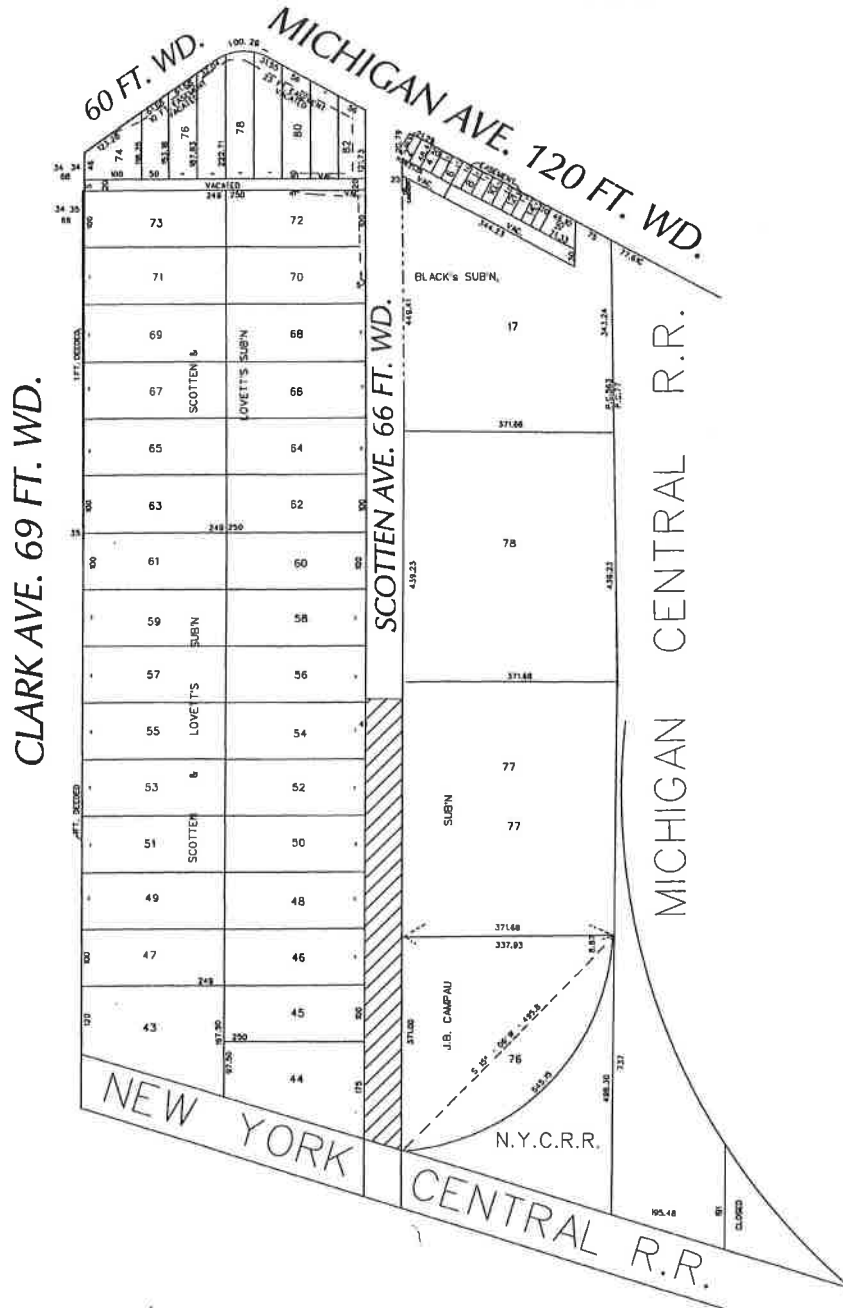
Cc: Ron Brundidge, Director, DPW
Mayor's Office – City Council Liaison

Michael Duggan. MAYOR

PETITION NO. 374
 GENERAL DEVELOPMENT COMPANY LLC
 C/O CHRYSLER CORPORATION
 TWO TOWER SQUARE, SUITE 850
 SOUTHFIELD, MICHIGAN 48078
 C/O BRUCE BRICKMAN
 PHONE NO. 248 514-7111



"REVISED"



- REQUEST TO TEMPORARY CLOSED STREET

(FOR OFFICE USE ONLY)

CARTO 12 A & F, 19 C & D

B										REQUEST TO TEMPORARY CLOSED A PORTION OF SCOTTEN AVE. 780 FT. 66 FT. WD. IN THE BLOCK BOUND BY CLARK, MICHIGAN AVE., MICHIGAN CENTRAL R.R. AND NEW YORK CITY R.R.		CITY OF DETROIT CITY ENGINEERING DEPARTMENT SURVEY BUREAU	
A		CHANGING VACATION TO TEMP CLOSURE		WLW		10/02/14							
DESCRIPTION		DRWN		CHKD		APPD		DATE		DRWG NO. X 374			
DRAWN BY WLW		CHECKED											
DATE 08-20-14		APPROVED											