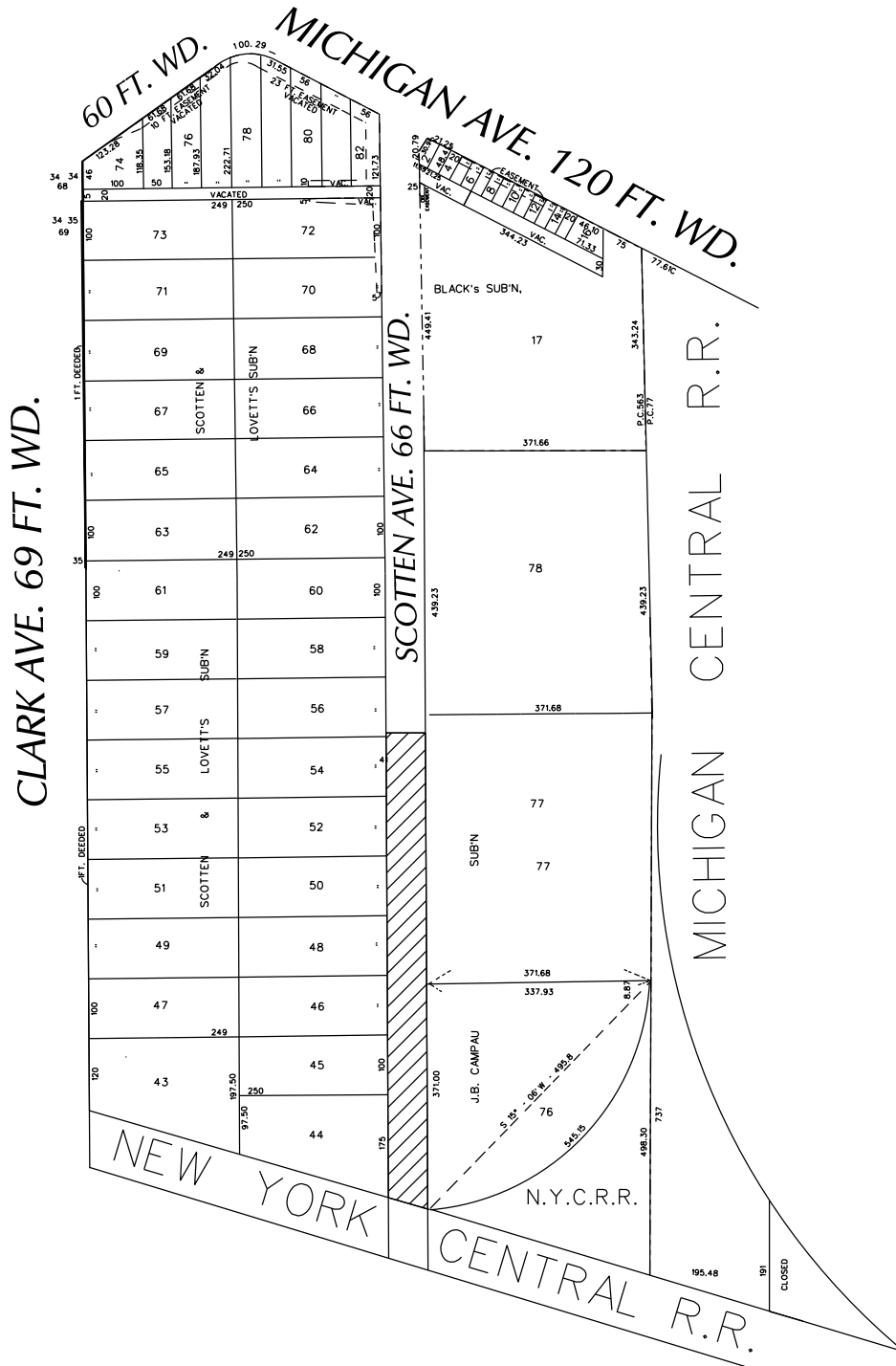


PETITION NO. 374
 GENERAL DEVELOPMENT COMPANY LLC
 C/O CHRYSLER CORPORATION
 TWO TOWER SQUARE, SUITE 850
 SOUTHFIELD, MICHIGAN 48078
 C/O BRUCE BRICKMAN
 PHONE NO. 248 514-7111



"REVISED"



- REQUEST TO TEMPORARY CLOSED STREET

(FOR OFFICE USE ONLY)

CARTO 12 A & F, 19 C & D

| | | | | | |
|--------------------|-----------------------------------|-----------------|-------------|-------------|-------------|
| B | | | | | |
| A | CHANGING VACATION TO TEMP CLOSURE | WLW | | | 10/02/14 |
| DESCRIPTION | | DRWN | CHKD | APPD | DATE |
| REVISIONS | | | | | |
| DRAWN BY | WLW | CHECKED | | | |
| DATE | 08-20-14 | APPROVED | | | |

REQUEST TO TEMPORARY CLOSED
 A PORTION OF SCOTTEN AVE. 780 FT. 66 FT. WD.
 IN THE BLOCK BOUND BY
 CLARK, MICHIGAN AVE., MICHIGAN CENTRAL R.R.
 AND NEW YORK CITY R.R.

CITY OF DETROIT
CITY ENGINEERING DEPARTMENT
SURVEY BUREAU

JOB NO. 01-01
DRWG. NO. X 374