

FAX TRANSMITTAL

Office of the City Clerk

Coleman A Young Municipal Center

Two Woodward Avenue, Suite 200

Detroit, Michigan 48226

Telephone: (313) 224-2070 Fax: (313) 224-2075

Monday, August 11, 2014

No. of Pages 4

FROM: *Mr. Andre Gilbert II, Junior Assistant City Council Committee Clerk*

SUBJECT: *Petition #372, Soave Real Estate Group, request to close alleys located between 708 Meldrum, 6420 E. Lafayette and 601 Beaufait.*

FAX TO THE FOLLOWING DEPARTMENT(S):

Mr. Richard Doherty, City Engineer

DPW - City Engineering Division

(313) 224-1464

46 c
435

CITY ENGINEERING DIVISION - DPW
900 CADILLAC TOWER
DETROIT, MICHIGAN 48226-2873

Attachment

RECEIVED AUG 14 2014

TED / CED

City of Detroit
OFFICE OF THE CITY CLERK

Janice M. Winfrey
City Clerk

Robin R. Underwood, CMC
Deputy City Clerk

DEPARTMENTAL REFERENCE COMMUNICATION

Monday, August 11, 2014

To: The Department or Commission Listed Below

From: Janice M. Winfrey, Detroit City Clerk

The following petition is herewith referred to you for report and recommendation to the City Council.

In accordance with that body's directive, kindly return the same with your report in duplicate within four (4) weeks.

DPW - CITY ENGINEERING DIVISION

372 *Soave Real Estate Group, request to close alleys located between 708 Meldrum, 6420 E. Lafayette and 601 Beaufait.*

NOTE: The Detroit City Council is on recess from:
TUESDAY, JULY 29, 2014 through FRIDAY, AUGUST 29, 2014

The City Clerk requests that Departments directly handle requests which fall within those dates.

PLEASE EXPEDITE!!!

372



August 5, 2014

The Honorable City Council
Attn: Office of the City Clerk
2 Woodward Ave.
200 CAYMC
Detroit, MI 48226

Re: Petition to close alleys located between 708 Meldrum, 6420 E. Lafayette and 601 Beaufait

To Whom It May Concern:

Please let this letter serve as our formal request that the alleys separating the above referenced addresses be vacated (see attached figure). We are in the process of purchasing, from the City of Detroit Planning and Development Department, part of 708 Meldrum which is adjacent to our existing facility that houses the DMC Care Ambulance Service. The vacation of the outline alleys will permit our planned expansion of the ambulance service facility. Should you have any questions or require any additional information, please do not hesitate to contact me at 734-341-2607 or by email at jim.mcclellan@soave.com.

Respectfully Submitted,

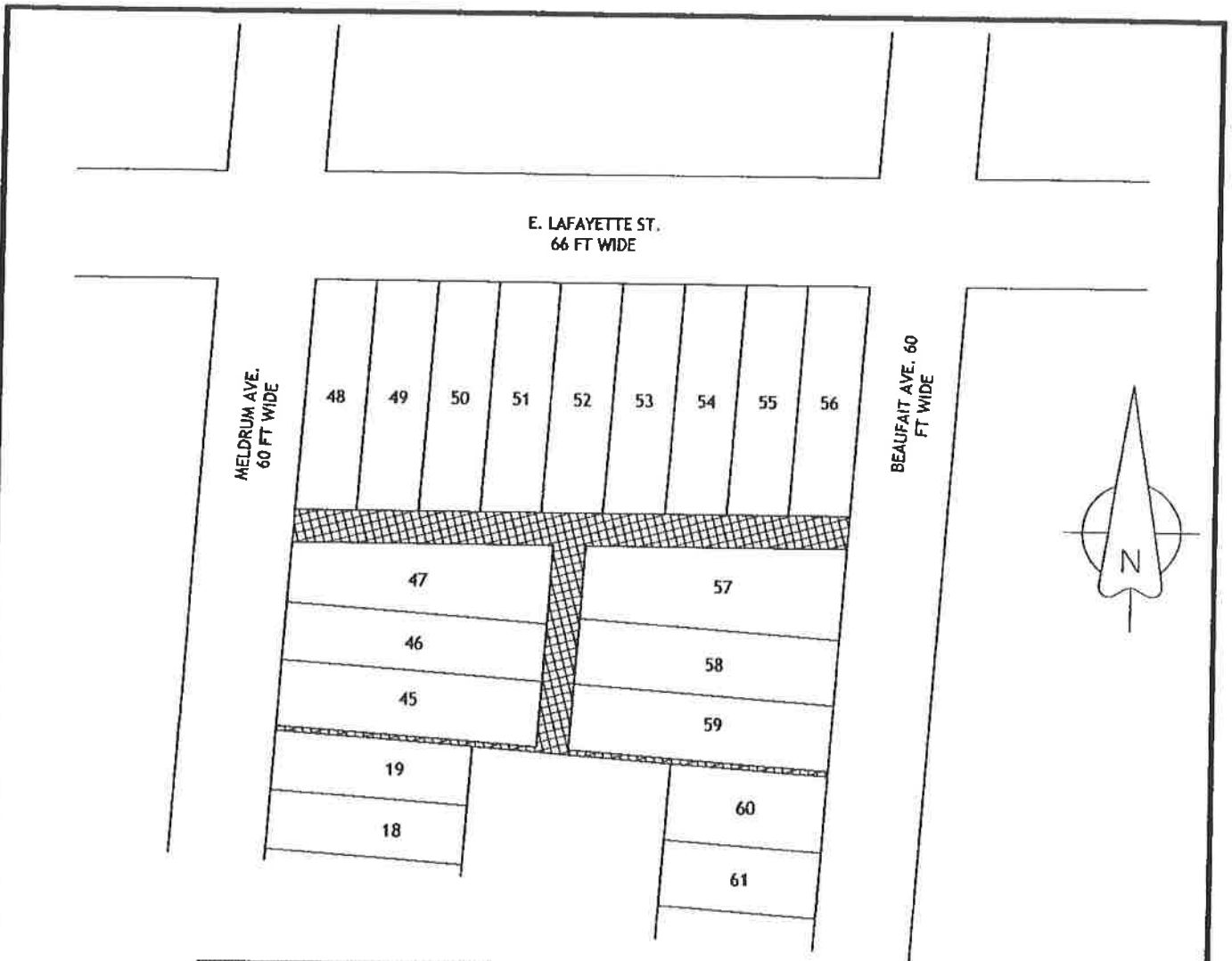
A handwritten signature in black ink, appearing to read "Jim McClellan".

Jim McClellan
Senior Project Manager
Soave Real Estate Group
Soave Enterprises
3400 E. Lafayette
Detroit, MI 48207
313-567-7000 Office
734-341-2607 Cell

SOAVE REAL ESTATE GROUP

3400 EAST LAFAYETTE DETROIT, MICHIGAN 48207 • 313.567.5760 • FAX 313.567.5763

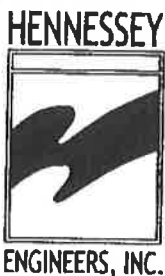
CITY CLERK 7 AUG 2014 PM4:09



 - DENOTES REQUESTED CONVERSION TO EASEMENT

VACATION OF ALLEY

ALL THAT PART OF THE EAST-WEST PUBLIC ALLEY, 20 FEET WIDE AND NORTH-SOUTH PUBLIC ALLEY 20 FEET WIDE AND EAST-WEST PUBLIC ALLEY 3 FEET WIDE IN THE BLOCK BOUNDED BY MELDRUM AVE. 60 FEET WIDE, EAST LAFAYETTE ST. 66 FEET WIDE AND BEAUFAIT AVE. 60 FEET WIDE LYING SOUTHERLY OF AND ABUTTING THE SOUTH LINE OF LOTS 48 THROUGH 56 AND LYING NORTHERLY OF AND ABUTTING THE NORTH LOT LINE OF LOTS 47 AND AND 57 AND LYING EASTERLY OF AND ABUTTING THE EASTERLY LINE OF LOTS 45 THROUGH 47 AND LYING WESTERLY OF AND ABUTTING THE WESTERLY LINE OF LOTS 57 THROUGH 59 AND LYING SOUTHERLY OF AND ABUTTING THE SOUTHERLY LINE OF LOTS 45 AND 59 AND LYING NORTHERLY OF AND ABUTTING THE NORTHERLY LOT LINE OF LOTS 19 AND 60 AND THE UNPLATTED PORTION BETWEEN OF "SUBDIVISION OF PART OF THE MELDRUM & BEAUFAIT FARMS" AS RECORDED IN LIBER 1, PAGE 304 OF PLATS, WAYNE COUNTY RECORDS.



ENGINEERING FOR RESULTS
13500 REECK ROAD
SOUTHGATE, MI 48195
(734) 759-1600
FAX (734) 282-6566
WWW.HENGINEERS.COM

TITLE		ALLEY VACATION SUBDIVISION OF PART OF THE MELDRUM & BEAUFAIT FARMS DETROIT, MICHIGAN	
DRAWN	MDB	APPROVED	MDB
PROJECT No.	53000	SCALE	1" = 100'
DATE	8-4-14	DRAWING NUMBER	SHEET 1 OF 1

CITY CLERK 7 AUG 2014 10:09 AM

- 15000111-4 ←
- 15013402-4 - FARRON CONST.
- 15013435 - PLANNING & DEVELOPMENT
- 15013480-1 - " "