

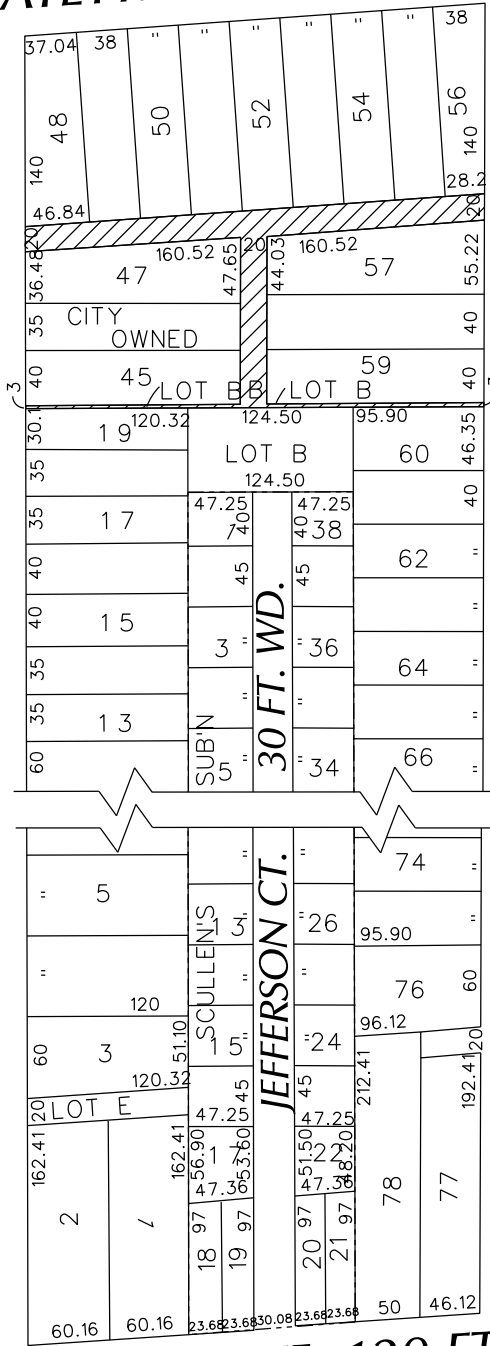
PETITION NO. 372
 SOAVE REAL ESTATE GROUP
 3400 LAFAYETTE E.
 DETROIT, MICHIGAN 48207
 C/O JIM McCLELLAN
 PHONE NO. 313 567-7000



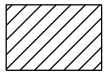
LAFAYETTE E. AVE. 50 FT. WD.

MELDRUM AVE. 60 FT. WD.

BEAUFAIT AVE. 71 FT. WD.



JEFFERSON E. AVE. 120 FT. WD.



- REQUESTED CONVERSION TO EASEMENT

(FOR OFFICE USE ONLY)

CARTO 46 C

B					
A					
DESCRIPTION	DRWN	CHKD	APPD	DATE	
REVISIONS					
DRAWN BY	WLW		CHECKED		
DATE	08-18-14		APPROVED		

REQUEST TO CONVERT TO EASEMENT
 THE EAST/WEST & NORTH/SOUTH
 PUBLIC ALLEY, 20 FT. WD. &
 EAST/WEST PUBLIC ALLEY 3 FT. WD.
 IN THE BLOCK BOUND BY
 MELDRUM, LAFAYETTE E., BEAUFAIT
 AND JEFFERSON E. AVE.

CITY OF DETROIT
 CITY ENGINEERING DEPARTMENT
 SURVEY BUREAU

JOB NO. 01-01

DRWG. NO. X 372