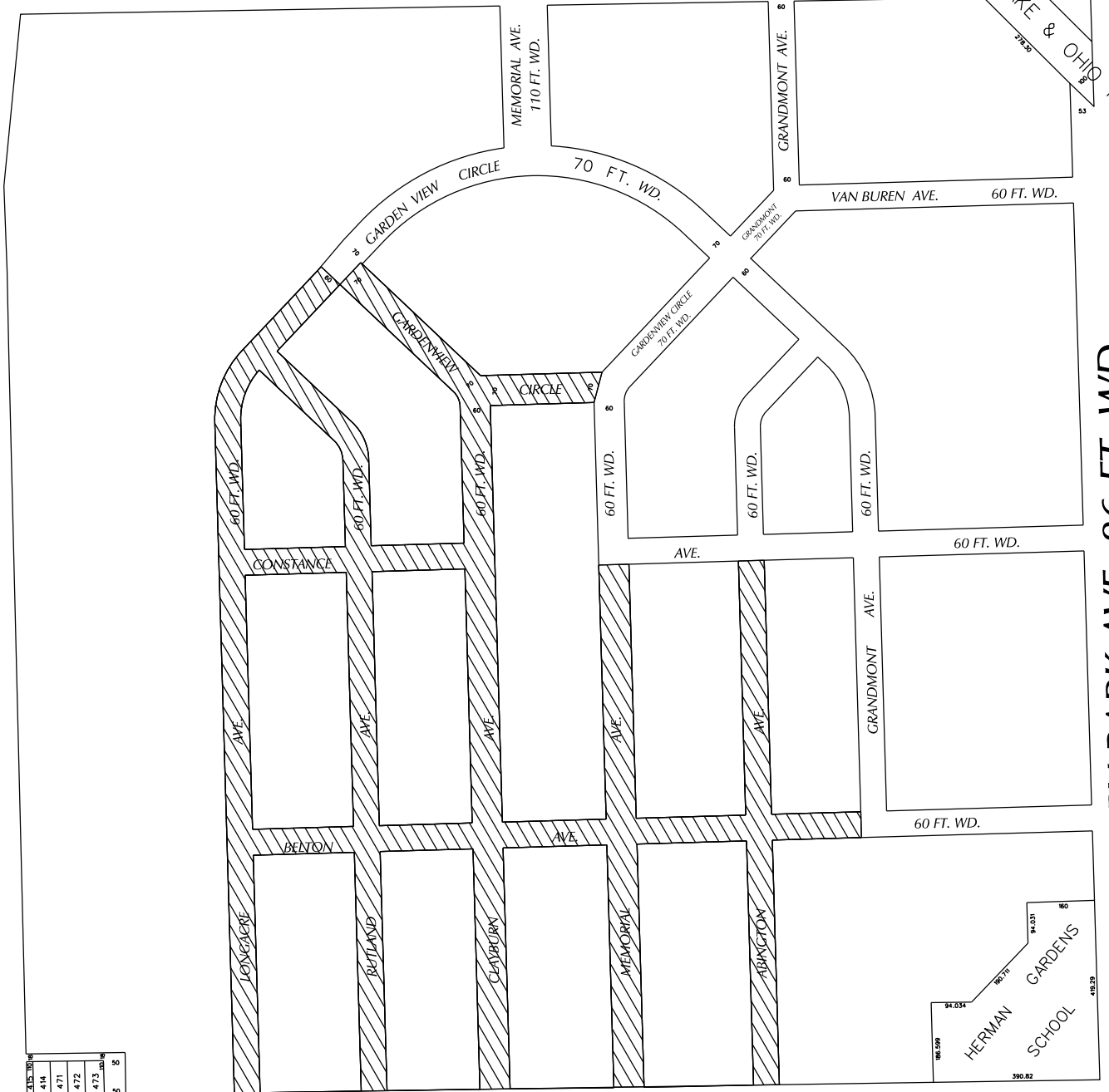


PETITION NO. 359  
 DETROIT HOUSING COMMISSION  
 1301 E. JEFFERSON AVE.  
 DETROIT, MICHIGAN 48207  
 C/O MARTINA J. ORANGE  
 PHONE NO. 313 877-8000



JOY RD. 120 FT. WD.

SOUTHFIELD FREEWAY

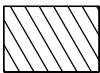


ASBURY PARK AVE. 86 FT. WD.

TIREMAN AVE. 103 FT. WD.

15	4.35	30.00	84
16	4.14	47.1	85
17	4.71	47.2	86
18	4.72	47.3	87
19	4.73	47.3	88

WEST HAVEN SUB.NO.1



- REQUESTED TEMPORARY STREET CLOSURE

(FOR OFFICE USE ONLY)

CARTO 99 B

B					
A					
	DESCRIPTION	DRWN	CHKD	APPD	DATE
REVISIONS					
	DRAWN BY	CHECKED			
	DATE	APPROVED			
	08-04-14				

REQUEST TO TEMPORARY CLOSE  
 VARIOUS PUBLIC STREET, VARIOUS WD.  
 IN THE BLOCK BOUND BY  
 JOY RD., ASBURY PARK, TIREMAN AVE.  
 AND SOUTHFIELD FWY.

CITY OF DETROIT	
CITY ENGINEERING DEPARTMENT	
SURVEY BUREAU	
JOB NO.	01-01
DRWG. NO.	X 359