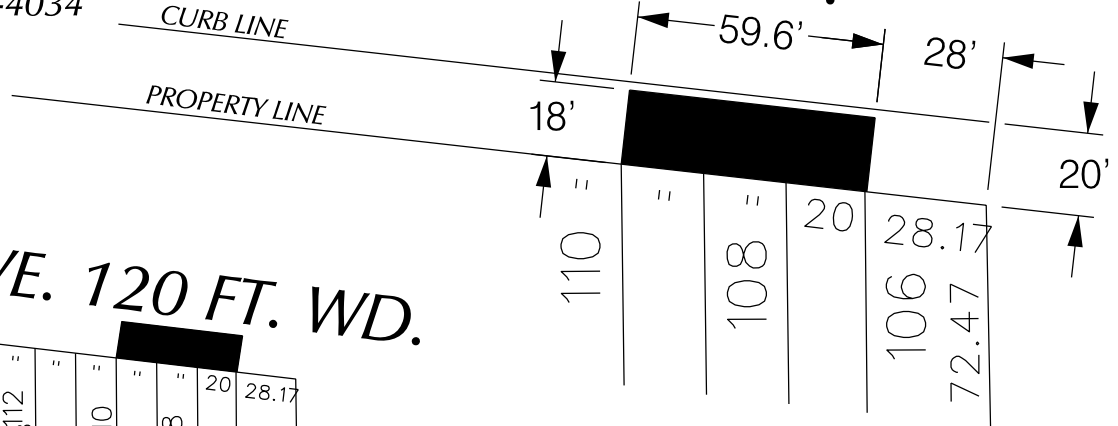


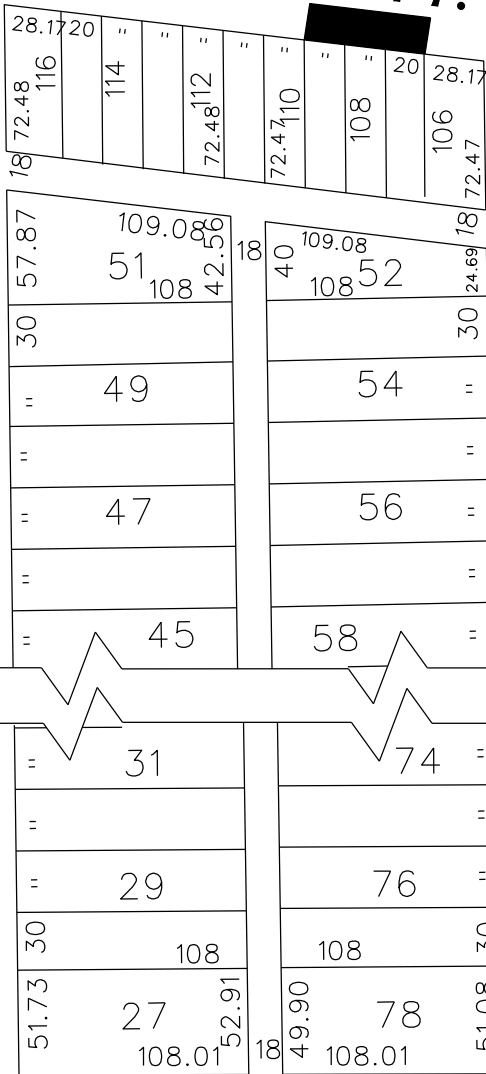
PETITION NO. 345  
 LAND INC.  
 4401 CONNER  
 DETROIT, MICHIGAN 48215  
 C/O PHILIP HADLEY  
 PHONE NO. 248 202-4034

**MACK AVE. 120 FT. WD.**



**MACK AVE. 120 FT. WD.**

**COPLIN AVE. 60 FT. WD.**



**LAKEVIEW AVE. 60 FT. WD.**

**CHARLEVOIX AVE. 60 FT. WD.**



 - AREA OF ENCROACHMENT  
 (Underground BioSwale)

(FOR OFFICE USE ONLY)

CARTO 63 B

**REQUEST ENCROACHMENT  
 INTO MACK AVE.  
 AT 13334 MACK AVE.  
 (Underground BioSwale)**

**CITY OF DETROIT  
 CITY ENGINEERING DEPARTMENT  
 SURVEY BUREAU**  
 JOB NO. 01-01  
 DRWG. NO. X 345

B					
A					
	DESCRIPTION	DRWN	CHKD	APPD	DATE
REVISIONS					
	DRAWN BY	CHECKED			
	DATE	APPROVED			
	08-06-14				