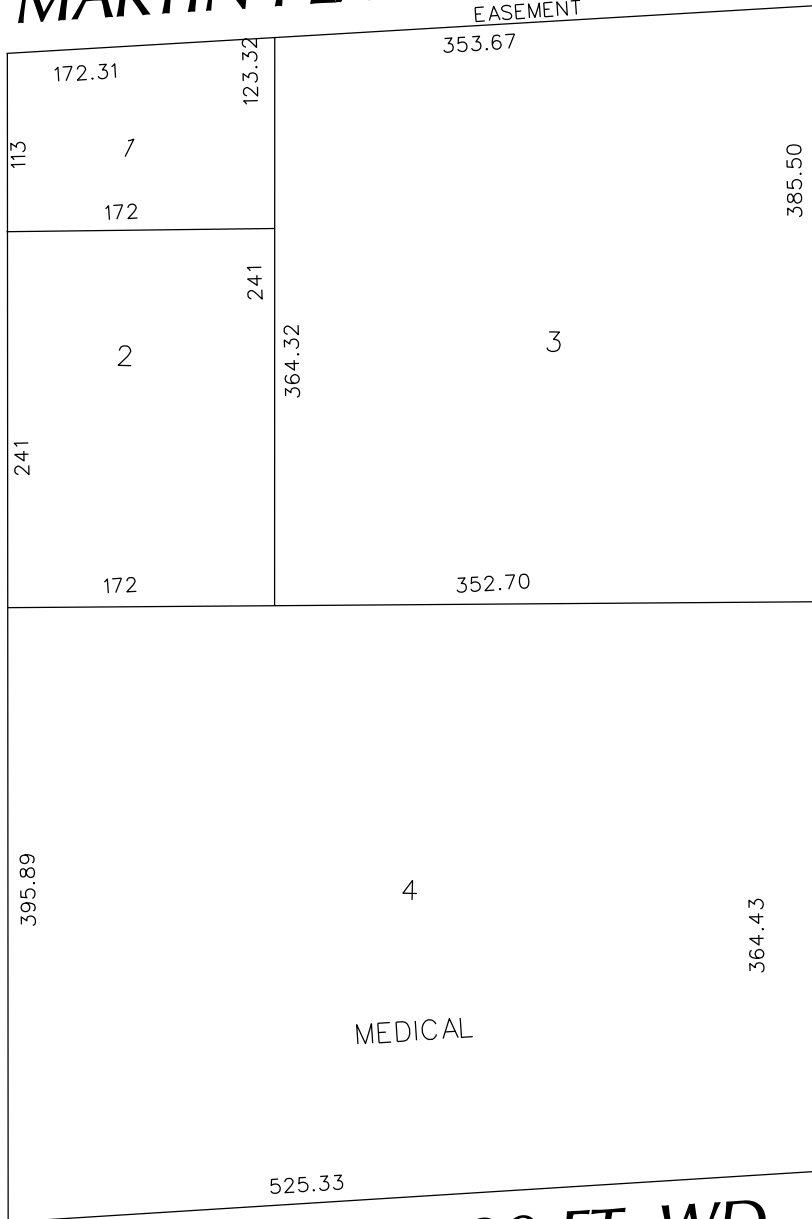


PETITION NO. 330
 GIFFELS WEBSTER
 28 W. ADAMS, SUITE 1200
 DETROIT, MICHIGAN 48226
 C/O JAMES FOSTER
 PHONE NO. 313 962-4442



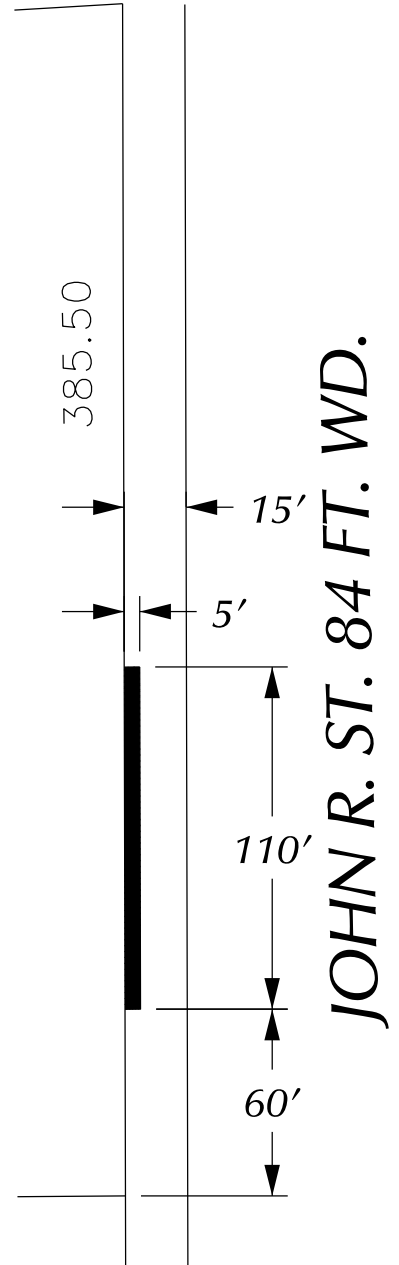
MARTIN PLACE 100 FT. WD.
 EASEMENT

WOODWARD AVE. 120 FT. WD.



MACK AVE. 120 FT. WD.

JOHN R. ST. 84 FT. WD.



JOHN R. ST. 84 FT. WD.



- REQUEST ENCROACHMENT
 (Overhead Canopy)

(FOR OFFICE USE ONLY)

CARTO 29 A

B					
A					
DESCRIPTION	DRWN	CHKD	APPD	DATE	
REVISIONS					
DRAWN BY	WLW	CHECKED			
DATE	07-17-14	APPROVED			

REQUEST ENCROACHMENT
 OVER JOHN R. ST.
 IN THE BLOCK BOUND BY
 MACK AND WOODWARD AVE.
 MARTIN PLACE
 AND JOHN R. ST.

CITY OF DETROIT CITY ENGINEERING DEPARTMENT SURVEY BUREAU	
JOB NO.	01-01
DRWG. NO.	X 330