



City of Detroit  
Inter-Departmental Communication

---

**TO:** Richard Doherty, City Engineer  
City Engineering/Department of Public Works

**FROM:** Debra Singleton, Manager II  
Detroit Water and Sewerage Department

**DATE:** June 6, 2014

**RE:** Petition No. 2940  
Request Encroachment into Griswold at 1439 Griswold (with Outdoor Seating)

We have reviewed the above Petition received by this office on May 13, 2014. With regard to DWSD's interests, our comment is as follows:

- Our records indicate that there are water mains and sewers in Griswold. DWSD has no objection to the requested encroachment provided that the attached Provisions for Encroachment are strictly followed.

If you have any questions, please call me at (313) 267-8309.

Sincerely,

Debra Singleton  
Manager II  
Claims and Permits

DES//gl

Attachments

CC: Cheryl Porter  
Mohamad Farhat

**City of Detroit**  
**City Engineering Division, Department of Public Works**  
**Survey Bureau**

**NOTICE OF PROPOSED CHANGE IN PROPERTY**

**Date:** 4/28/2014

**Petition:** x2940

- |                                                                         |                                                  |
|-------------------------------------------------------------------------|--------------------------------------------------|
| <input type="checkbox"/> AT&T Telecommunication                         |                                                  |
| <input type="checkbox"/> Cable Television (CATV)                        | <input type="checkbox"/> Vacation                |
| <input type="checkbox"/> Detroit Edison (DTE)                           |                                                  |
| <input type="checkbox"/> Michigan Consolidated Gas (DTE)                | <input type="checkbox"/> Conversion to Easement  |
| <input type="checkbox"/> Fire Department                                | <input type="checkbox"/> Dedication              |
| <input type="checkbox"/> Planning & Development Department              |                                                  |
| <input type="checkbox"/> Public Lighting Dept. - Communication Division | <input checked="" type="checkbox"/> Encroachment |
| <input type="checkbox"/> Public Lighting Dept. - Overhead Line Division |                                                  |
| <input type="checkbox"/> Public Lighting Dept. - Underground Division   | <input type="checkbox"/> Temporary Closing       |
| <input type="checkbox"/> Police Department                              |                                                  |
| <input type="checkbox"/> Recreation Department                          | <input type="checkbox"/> Berm Use                |
| <input type="checkbox"/> Sanitation Division, DPW                       |                                                  |
| <input type="checkbox"/> Street Design Bureau, DPW                      |                                                  |
| <input type="checkbox"/> Street Maintenance Division, DPW               |                                                  |
| <input type="checkbox"/> Street and Traffic Division, DPW               |                                                  |
| <input type="checkbox"/> Water and Sewerage Dept. - Sewer Design        |                                                  |
| <input type="checkbox"/> Water and Sewerage Dept. - Water Design        |                                                  |

A petition drawing is attached. Property shown on the attached print is proposed to be changed as indicated.

Kindly report (using the back of this sheet) the nature of your services (if any) affected by the proposed change and the estimated costs of removing and rerouting such services (if necessary).

Please return one copy to City Engineering Division, DPW. Retain one copy and print for you file.

Alfred Jordan, Director, Department of Public Works

By: Richard Doherty, CED DPW  
Head Engineer

**TO: City Engineering Division, DPW  
65 Cadillac Square, Suite 900  
Detroit, Michigan 48226-2873  
Survey Bureau: 313-224-3970**

x2940

The proposed change in property (referred to on the other side of this sheet) would affect our services as follows:

- Not Involved
- Involved; but asking you to hold action on this petition until further notice.
- Involved; but no objections to the property change .
- Involved; but no objections to the property change...provided as easement of the full width of the public right-of-way (street, alley or other public place) is reserved.
- Involved; the nature of our services, and the estimated costs of removing and/or rerouting such services are:

\_\_\_\_\_  
(Utility or City Department)

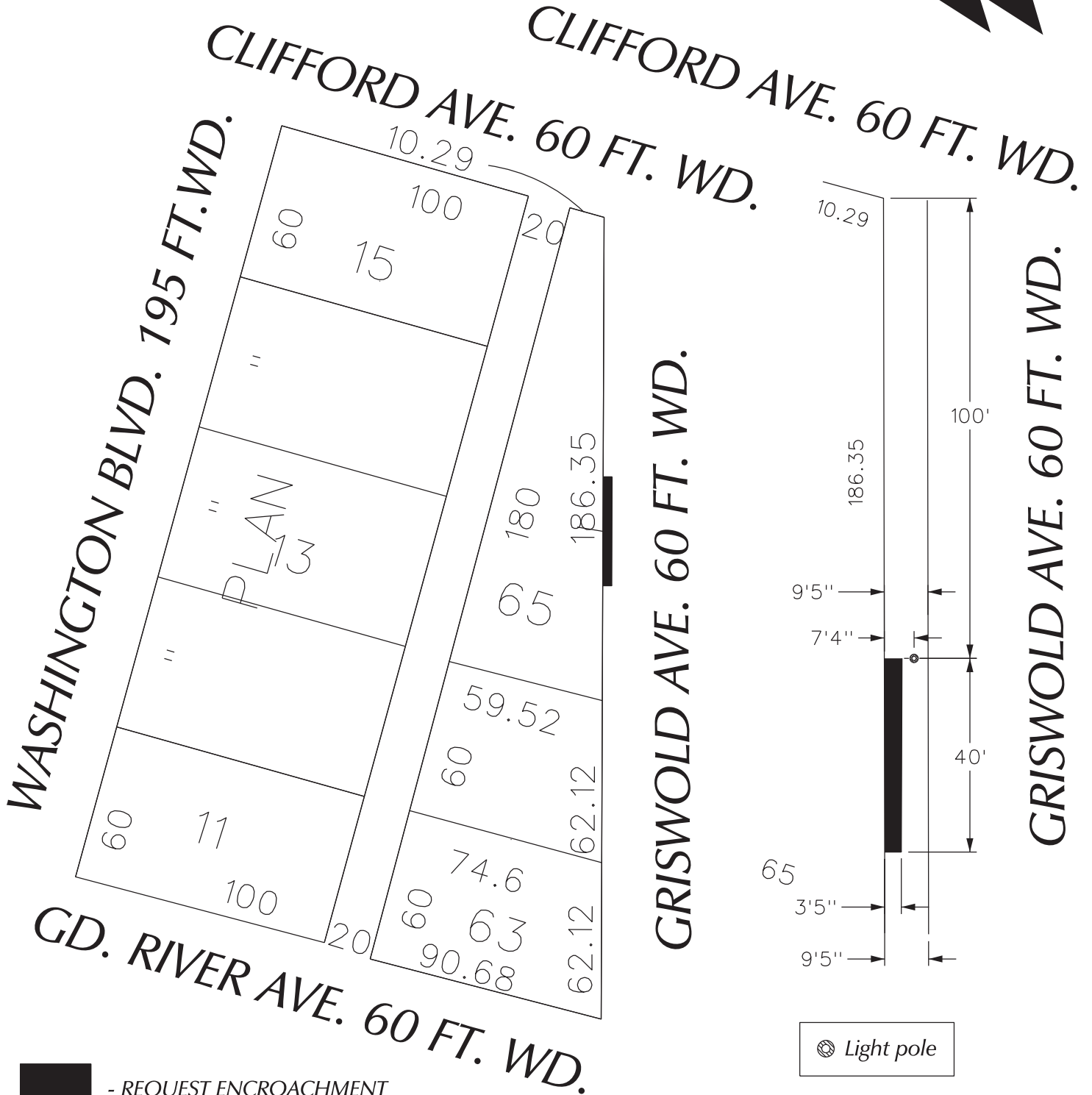
\_\_\_\_\_  
By

\_\_\_\_\_  
Title

\_\_\_\_\_  
Date

\_\_\_\_\_  
Area code – Telephone number

PETITION NO. 2940  
 DEE & L DEVELOPMENT CORPORATION  
 1439 GRISWOLD AVE.  
 DETROIT, MICHIGAN 48226  
 C/O LARRY MONGO  
 PHONE NO. 313 303-2071



(FOR OFFICE USE ONLY)

CARTO 28 B

REQUEST ENCROACHMENT  
 INTO GRISWOLD  
 AT 1439 GRISWOLD  
 (With Outdoor Seating)

CITY OF DETROIT  
 CITY ENGINEERING DEPARTMENT  
 SURVEY BUREAU

JOB NO. 01-01

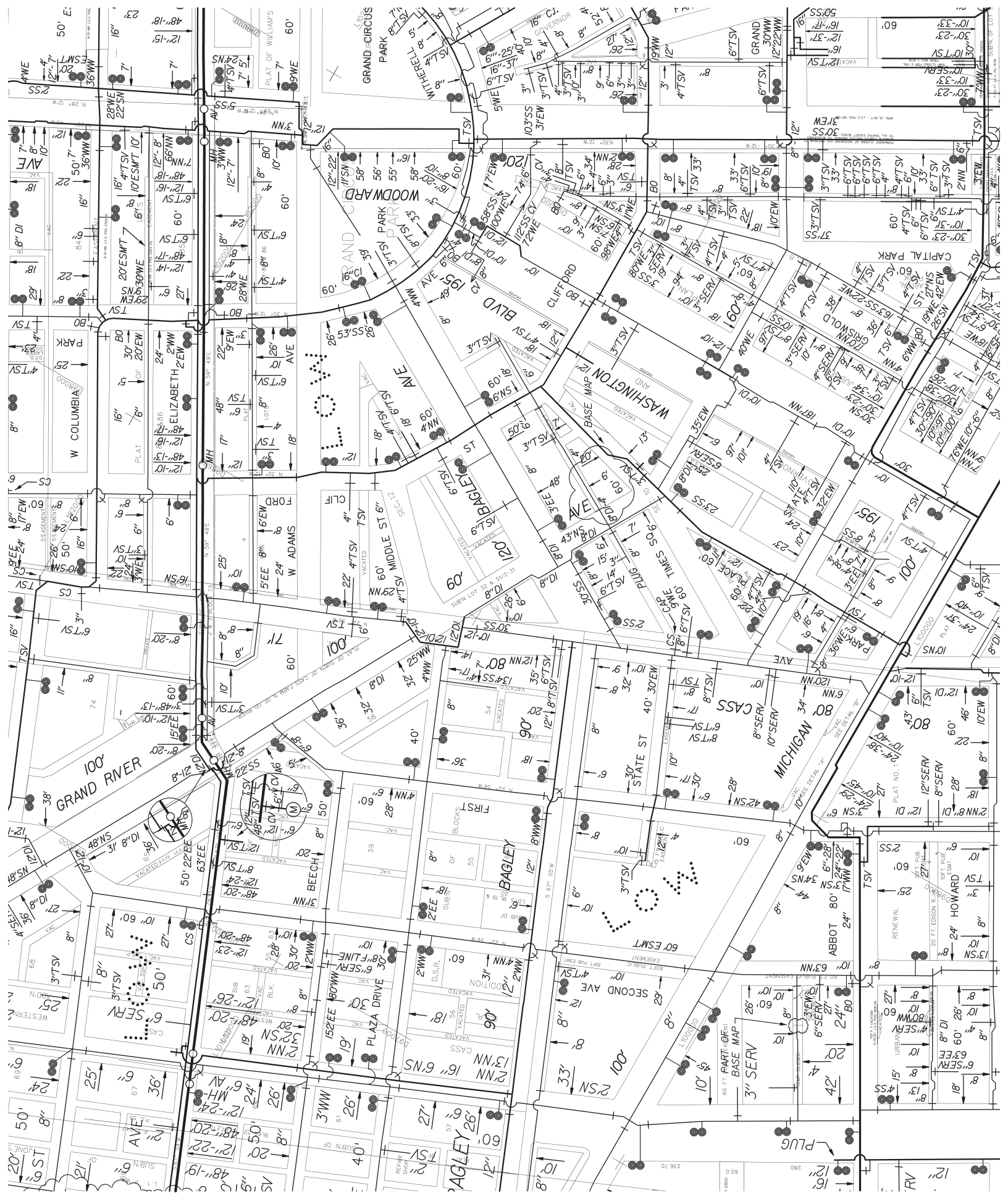
DRWG. NO. X 2940

B					
A					
DESCRIPTION		DRWN	CHKD	APPD	DATE
REVISIONS					
DRAWN BY	WLW	CHECKED			
DATE	04-24-14	APPROVED			

## **PROVISIONS FOR ENCROACHMENT For Petition 2940**

Detroit Water and Sewerage (DWSD) agrees to the proposed encroachment subject to the fulfilling of the following provisions:

1. By approval of this petition the (DWSD) does not waive any of its rights to its facilities located in the right of way, and at all time, DWSD, its agents or employees, shall have the right to enter upon the right of way to maintain, repair, alter, service, inspect, or install its facilities. All costs incident to the damaging, dismantling, demolishing, removal and replacement of structures or other improvements herein permitted and incurred in gaining access to DWSD's facilities for maintenance, repairing, alteration, servicing or inspection caused by the encroachment shall be borne by the petitioner. All costs associated with gaining access to DWSD's facilities, which could normally be expected had the petitioner not encroached into the right of way shall be borne by DWSD.
2. All construction performed under this petition shall not be commenced until after five (5) days written notice to DWSD. Seventy-two (72) hours notice shall also be provided in accordance with P.A. 53 1974, as amended, utilizing the MISS DIG one call system.
3. Construction under this petition is subject to inspection and approval by DWSD forces. The cost of such inspection shall, at the discretion of DWSD, be borne by the petitioner.
4. If DWSD facilities located within the right of way shall break or be damaged as the result of any action on the part of the petitioner, then in such event the petitioner agrees to be liable for all costs incident to the repair, replacement or relocation of such broken or damaged DWSD facilities.
5. The petitioner shall hold DWSD harmless for any damage to the encroaching device constructed or installed under this petition, which may be caused by the failure of DWSD's facilities.



60 FT PART-OFFSET  
BASE MAP

3" SERV

6" SERV

10" SERV

12" SERV

15" SERV

18" SERV

21" SERV

24" SERV

27" SERV

30" SERV

33" SERV

36" SERV

39" SERV

42" SERV

45" SERV

48" SERV

51" SERV

54" SERV

57" SERV

60" SERV

63" SERV

66" SERV

69" SERV

72" SERV

75" SERV

78" SERV

81" SERV

84" SERV

87" SERV

90" SERV

93" SERV

96" SERV

99" SERV

102" SERV

105" SERV

108" SERV

111" SERV

114" SERV

117" SERV

120" SERV

123" SERV

126" SERV

129" SERV

132" SERV

135" SERV

138" SERV

141" SERV

144" SERV

147" SERV

150" SERV

153" SERV

156" SERV

159" SERV

162" SERV

165" SERV

168" SERV

171" SERV

174" SERV

177" SERV

180" SERV

183" SERV

186" SERV

189" SERV

192" SERV

195" SERV

198" SERV

201" SERV

204" SERV

207" SERV

210" SERV

213" SERV

216" SERV

219" SERV

222" SERV

225" SERV

228" SERV

231" SERV

234" SERV

237" SERV

240" SERV

243" SERV

246" SERV

249" SERV

252" SERV

255" SERV

258" SERV

261" SERV

264" SERV

267" SERV

270" SERV

273" SERV

276" SERV

279" SERV

282" SERV

285" SERV

288" SERV

291" SERV

294" SERV

297" SERV

300" SERV

303" SERV

306" SERV

309" SERV

312" SERV

315" SERV

318" SERV

321" SERV

324" SERV

327" SERV

330" SERV

333" SERV

336" SERV

339" SERV

342" SERV

345" SERV

348" SERV

351" SERV

354" SERV

357" SERV

360" SERV

363" SERV

366" SERV

369" SERV

372" SERV

375" SERV

378" SERV

381" SERV

384" SERV

387" SERV

390" SERV

393" SERV

396" SERV

399" SERV

402" SERV

405" SERV

408" SERV

411" SERV

414" SERV

417" SERV

420" SERV

423" SERV

426" SERV

429" SERV

432" SERV

435" SERV

438" SERV

441" SERV

444" SERV

447" SERV

450" SERV

453" SERV

456" SERV

459" SERV

462" SERV

465" SERV

468" SERV

471" SERV

474" SERV

477" SERV

480" SERV

483" SERV

486" SERV

489" SERV

492" SERV

495" SERV

498" SERV

501" SERV

504" SERV

507" SERV

510" SERV

513" SERV

516" SERV

519" SERV

522" SERV

525" SERV

528" SERV

531" SERV

534" SERV

537" SERV

540" SERV

543" SERV

546" SERV

549" SERV

552" SERV

555" SERV

558" SERV

561" SERV

564" SERV

567" SERV

570" SERV

573" SERV

576" SERV

579" SERV

582" SERV

585" SERV

588" SERV

591" SERV

594" SERV

597" SERV

600" SERV

603" SERV

606" SERV

609" SERV

612" SERV

615" SERV

618" SERV

621" SERV

624" SERV

627" SERV

630" SERV

633" SERV

636" SERV

639" SERV

642" SERV

645" SERV

648" SERV

651" SERV

654" SERV

657" SERV

660" SERV

663" SERV

666" SERV

669" SERV

672" SERV

675" SERV

678" SERV

681" SERV

684" SERV

687" SERV

690" SERV

693" SERV

696" SERV

699" SERV

702" SERV

705" SERV

708" SERV

711" SERV

714" SERV

717" SERV

720" SERV

723" SERV

726" SERV

729" SERV

732" SERV

735" SERV

738" SERV

741" SERV

744" SERV

747" SERV

750" SERV

753" SERV

756" SERV

759" SERV

762" SERV

765" SERV

768" SERV

771" SERV

774" SERV

777" SERV

780" SERV

783" SERV

786" SERV

789" SERV

792" SERV

795" SERV

798" SERV

801" SERV

804" SERV

807" SERV

810" SERV

813" SERV

816" SERV

819" SERV

822" SERV

825" SERV

828" SERV

831" SERV

834" SERV

837" SERV

840" SERV

843" SERV

846" SERV

849" SERV

852" SERV

855" SERV

858" SERV

861" SERV

864" SERV

867" SERV

870" SERV

873" SERV

876" SERV

879" SERV

882" SERV

885" SERV

888" SERV

891" SERV

894" SERV

897" SERV

900" SERV

903" SERV

906" SERV

909" SERV

912" SERV

915" SERV

