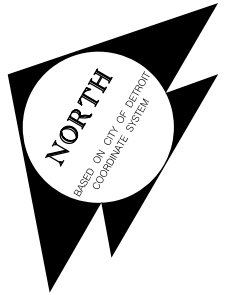


PETITION NO. 2830
 GIFFELS WEBSTER
 28 W. ADAMS, SUITE 1200
 DETROIT, MICHIGAN 48221
 C/O JAMES FOSTER
 PHONE NO. 313 962-5068

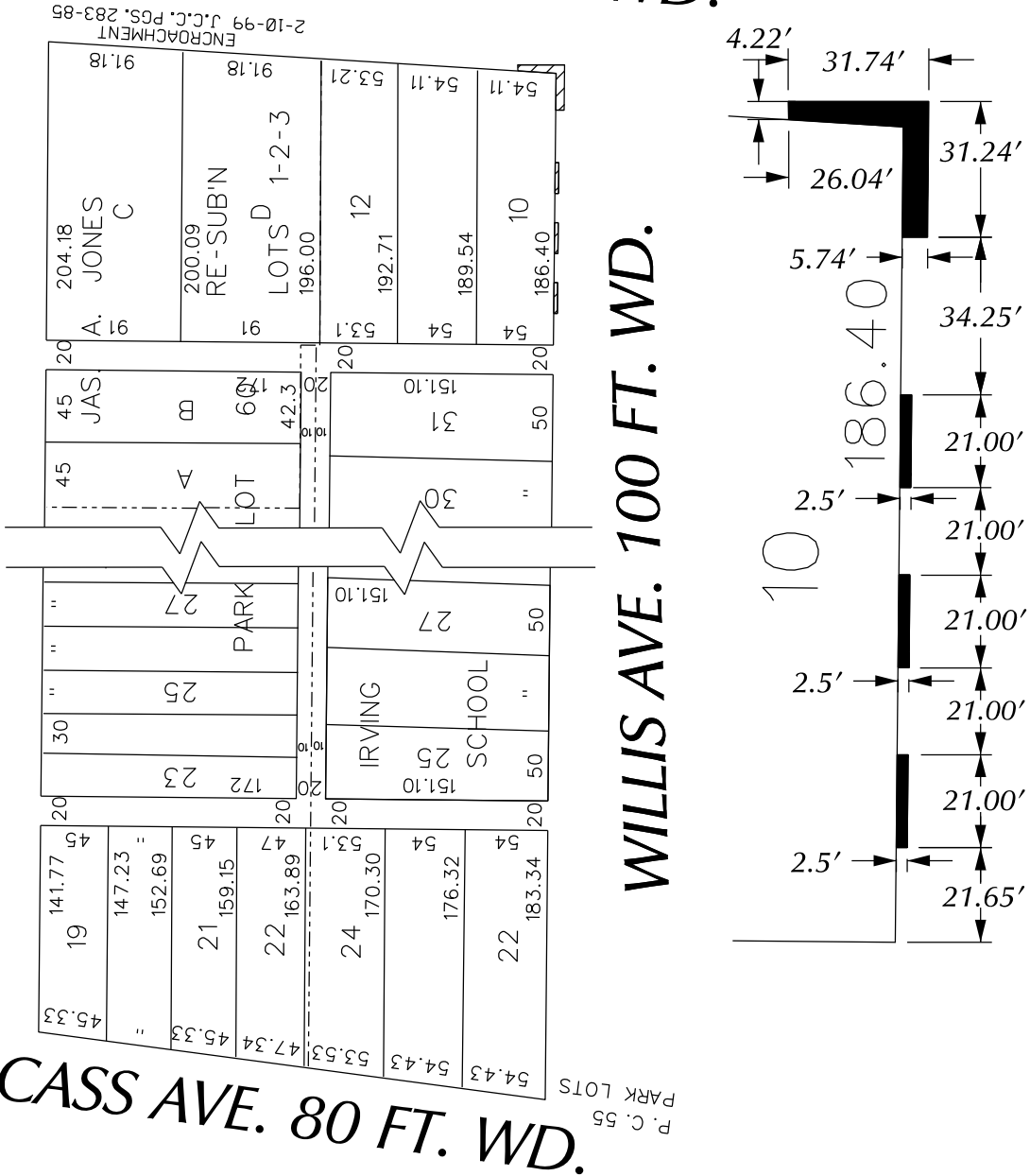


WOODWARD AVE. 120 FT. WD.

CANFIELD AVE. 60 FT. WD.

WILLIS AVE. 100 FT. WD.

WILLIS AVE. 100 FT. WD.



- REQUESTED TO ENCROACHMENTS

(FOR OFFICE USE ONLY)

CARTO 30 E

B					
A					
DESCRIPTION	DRWN	CHKD	APPD	DATE	
REVISIONS					
DRAWN BY	WLW		CHECKED		
DATE	04-01-14		APPROVED		

REQUEST TO CONVERT TO
 VARIOUS ENCROACHMENTS
 THE WEST OF WOODWARD/SOUTH OF
 WILLIS IN THE BLOCK BOUND BY
 WOODWARD, WILLIS, CASS
 AND CANFIELD AVE.

CITY OF DETROIT CITY ENGINEERING DEPARTMENT SURVEY BUREAU	
JOB NO.	01-01
DRWG. NO.	X 2830