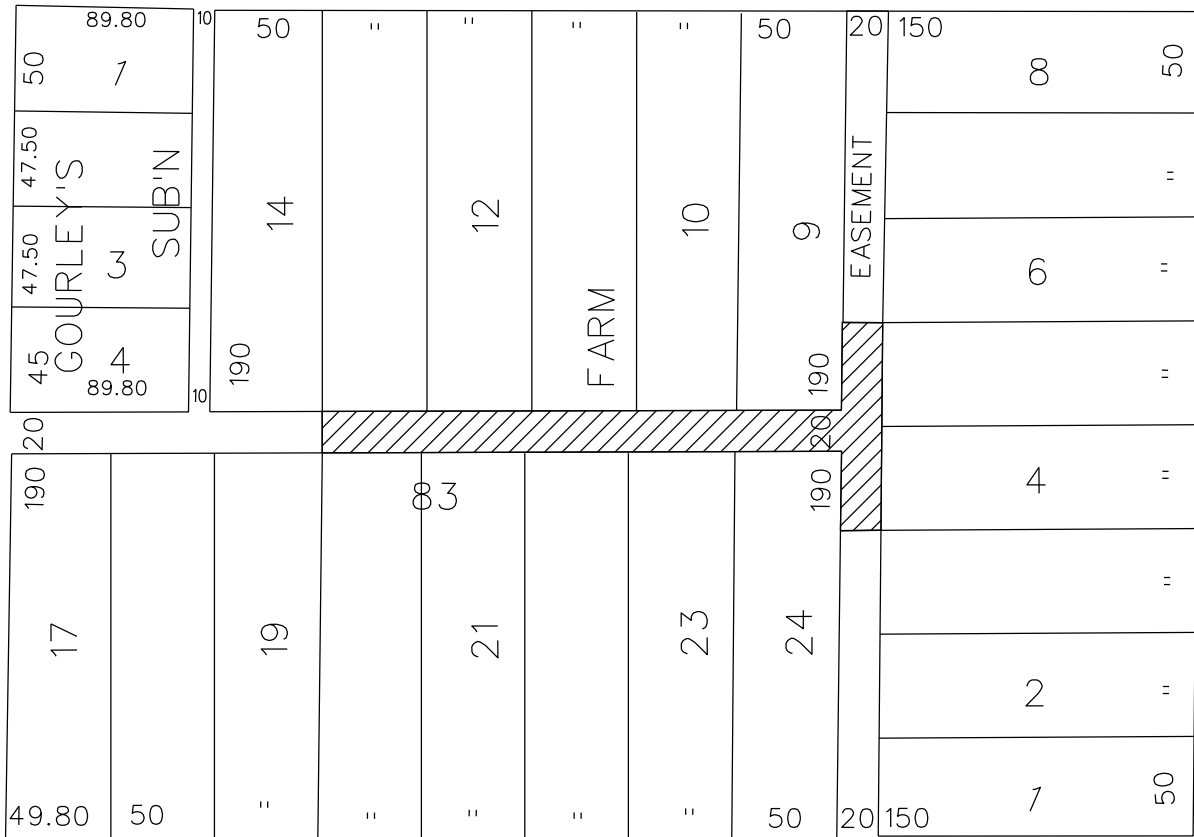


PETITION NO. 280
MASONIC TEMPLE
500 TEMPLE AVE.
DETROIT, MICHIGAN 48201
C/O KAREN ADDISON
PHONE NO. 313 832-7100 x 225



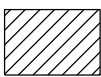
CHARLOTTE AVE. 60 FT. WD.

SECOND AVE. 100 FT. WD.



CASS AVE. 80 FT. WD.

TEMPLE AVE. 100 FT. WD.



- REQUESTED CONVERSION TO EASEMENT

(FOR OFFICE USE ONLY)

CARTO 29 E

B					
A					
DESCRIPTION		DRWN	CHKD	APPD	DATE
REVISIONS					
DRAWN BY		CHECKED			
DATE		APPROVED			
06-17-14					

REQUEST TO CONVERT TO EASEMENT
A PORTION OF THE EAST/WEST AND
NORTH/SOUTH PUBLIC ALLEY, 20 FT. WD.
IN THE BLOCK BOUND BY
SECOND, CHARLOTTE, CASS
AND TEMPLE AVE.

CITY OF DETROIT CITY ENGINEERING DEPARTMENT SURVEY BUREAU	
JOB NO.	01-01
DRWG. NO.	X 280