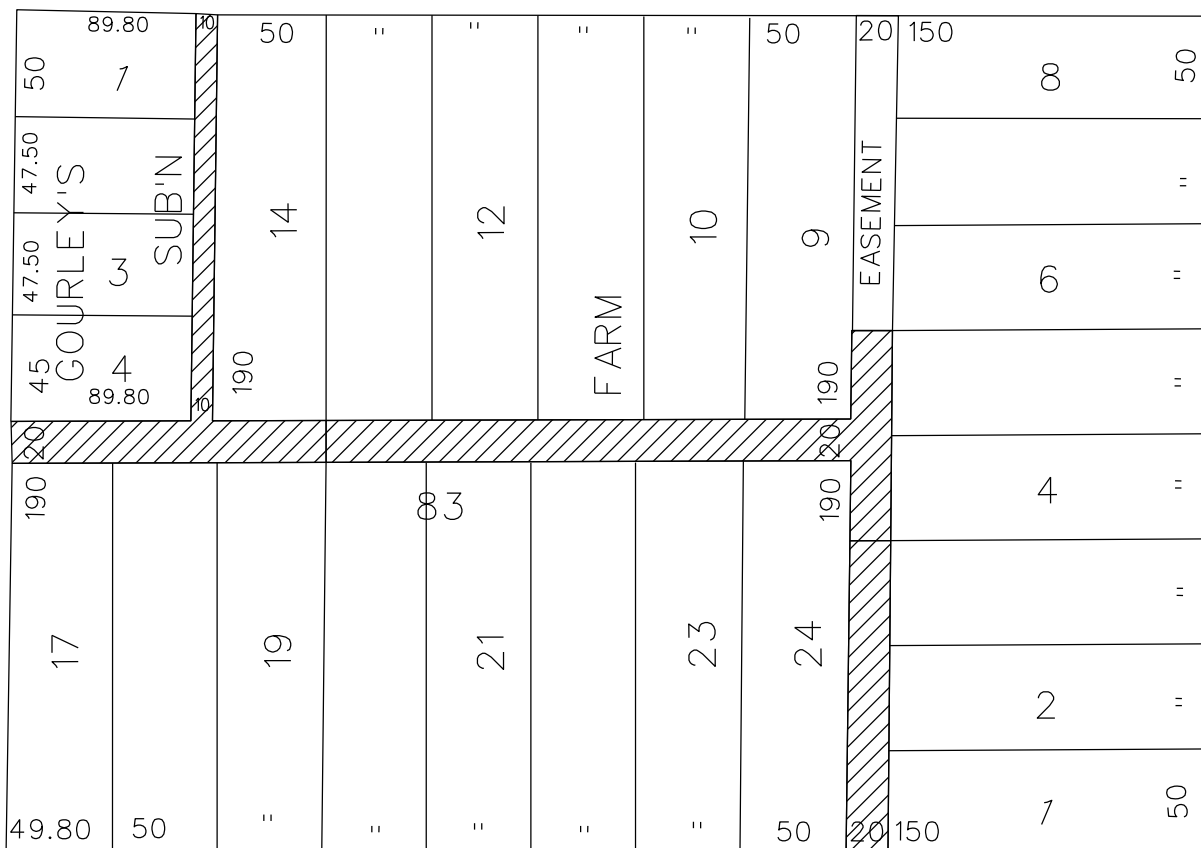


PETITION NO. 280
 MASONIC TEMPLE
 500 TEMPLE AVE.
 DETROIT, MICHIGAN 48201
 C/O KAREN ADDISON
 PHONE NO. 313 832-7100 x 225



CHARLOTTE AVE. 60 FT. WD.

SECOND AVE. 100 FT. WD.



CASS AVE. 80 FT. WD.

TEMPLE AVE. 100 FT. WD.

"REVISED - 1"



- REQUESTED CONVERSION TO EASEMENT

(FOR OFFICE USE ONLY)

CARTO 29 E

B						REQUEST TO CONVERT TO EASEMENT A PORTION OF THE EAST/WEST AND NORTH/SOUTH PUBLIC ALLEY, 20 FT. WD. IN THE BLOCK BOUND BY SECOND, CHARLOTTE, CASS AND TEMPLE AVE.	CITY OF DETROIT CITY ENGINEERING DEPARTMENT SURVEY BUREAU	
A								JOB NO. 01-01
DESCRIPTION		DRWN	CHKD	APPD	DATE			DRWG. NO. X 280
REVISIONS								
DRAWN BY		CHECKED						
WLW								
DATE		APPROVED						
06-17-14								