

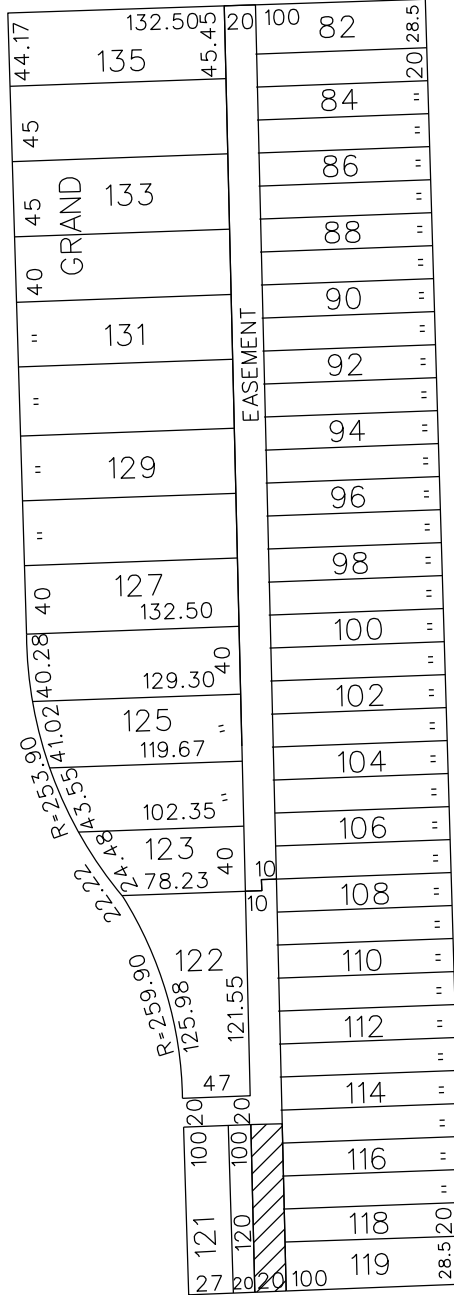
PETITION NO. 2780
 NSI CONSTRUCTION INC.
 4320 PRATT RD.
 ANN ARBOR, MICHIGAN 48103
 C/O MICHAEL BEYDOUN
 PHONE NO. 313 790-0129



SANTA MARIA AVE. 60 FT. WD.

WOODBINE AVE. 60 FT. WD.

TELEGRAPH RD. 204 FT. WD.



MCNICHOLS W. AVE. 66 FT. WD.



- REQUESTED CONVERSION TO EASEMENT

(FOR OFFICE USE ONLY)

CARTO 122 D

B					
A					
DESCRIPTION		DRWN	CHKD	APPD	DATE
REVISIONS					
DRAWN BY		CHECKED			
DATE		APPROVED			
08-15-14					

REQUEST TO CONVERT TO EASEMENT
 THE NORTH/SOUTH PUBLIC ALLEY, 20 FT. WD.
 IN THE BLOCK BOUND BY
 MCNICHOLS W., WOODBINE, SANTA MARIA AVE.
 AND TELEGRAPH RD.

CITY OF DETROIT	
CITY ENGINEERING DEPARTMENT	
SURVEY BUREAU	
JOB NO.	01-01
DRWG. NO.	X 2780