



City of Detroit
Detroit Water and Sewerage Department
Inter-Departmental Communication

TO: Richard Doherty, City Engineer
City Engineering/Department of Public Works

FROM: Debra Singleton, Manager II
Detroit Water and Sewerage Department

DATE: August 29, 2014

RE: Petition No. 277
Request for Temporary Closure of Various Public Streets in the Blocks
Bound by Evergreen, Auburn, Westwood and Chesapeake & Ohio R.R.

We have reviewed the above Petition received by this office on August 12, 2014. With regard to DWSD's interests, our comment is as follows:

Our records indicate there are sewers and water mains in the Public Right-of-Ways. However, DWSD has no objection to the requested temporary closures provided that the attached DWSD Provisions for Temporary Closure are strictly followed.

If you have any questions, please call me at (313) 267-8309.

Sincerely,

A handwritten signature in black ink, appearing to read "D. Singleton".

Debra Singleton
Manager II
Claims and Permits

DES/gl

Attachments

CC: Cheryl Porter, WBB
Mohamad Farhat, CSF

Michael Duggan, Mayor

City of Detroit
City Engineering Division, Department of Public Works
Survey Bureau

NOTICE OF PROPOSED CHANGE IN PROPERTY

Date: 08/12/2014

Petition: x277

- | | |
|---|---|
| <input type="checkbox"/> AT&T Telecommunication | |
| <input type="checkbox"/> Cable Television (CATV) | <input type="checkbox"/> Vacation |
| <input type="checkbox"/> Detroit Edison (DTE) | |
| <input type="checkbox"/> Michigan Consolidated Gas (DTE) | <input type="checkbox"/> Conversion to Easement |
| <input type="checkbox"/> Fire Department | <input type="checkbox"/> Dedication |
| <input type="checkbox"/> Planning & Development Department | |
| <input type="checkbox"/> Public Lighting Dept. - Communication Division | <input type="checkbox"/> Encroachment |
| <input type="checkbox"/> Public Lighting Dept. - Overhead Line Division | |
| <input type="checkbox"/> Public Lighting Dept. - Underground Division | <input checked="" type="checkbox"/> Temporary Closing |
| <input type="checkbox"/> Police Department | |
| <input type="checkbox"/> Recreation Department | <input type="checkbox"/> Berm Use |
| <input type="checkbox"/> Sanitation Division, DPW | |
| <input type="checkbox"/> Street Design Bureau, DPW | |
| <input type="checkbox"/> Street Maintenance Division, DPW | |
| <input type="checkbox"/> Street and Traffic Division, DPW | |
| <input type="checkbox"/> Water and Sewerage Dept. - Sewer Design | |
| <input type="checkbox"/> Water and Sewerage Dept. - Water Design | |

A petition drawing is attached. Property shown on the attached print is proposed to be changed as indicated.

Kindly report (using the back of this sheet) the nature of your services (if any) affected by the proposed change and the estimated costs of removing and rerouting such services (if necessary).

Please return one copy to City Engineering Division, DPW. Retain one copy and print for you file.

Alfred Jordan, Director, Department of Public Works

By: Richard Doherty, CED DPW
Head Engineer

**TO: City Engineering Division, DPW
65 Cadillac Square, Suite 900
Detroit, Michigan 48226-2873
Survey Bureau: 313-224-3970**

x277

The proposed change in property (referred to on the other side of this sheet) would affect our services as follows:

- Not Involved
- Involved; but asking you to hold action on this petition until further notice.
- Involved; but no objections to the property change .
- Involved; but no objections to the property change...provided as easement of the full width of the public right-of-way (street, alley or other public place) is reserved.
- Involved; the nature of our services, and the estimated costs of removing and/or rerouting such services are:

(Utility or City Department)

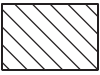
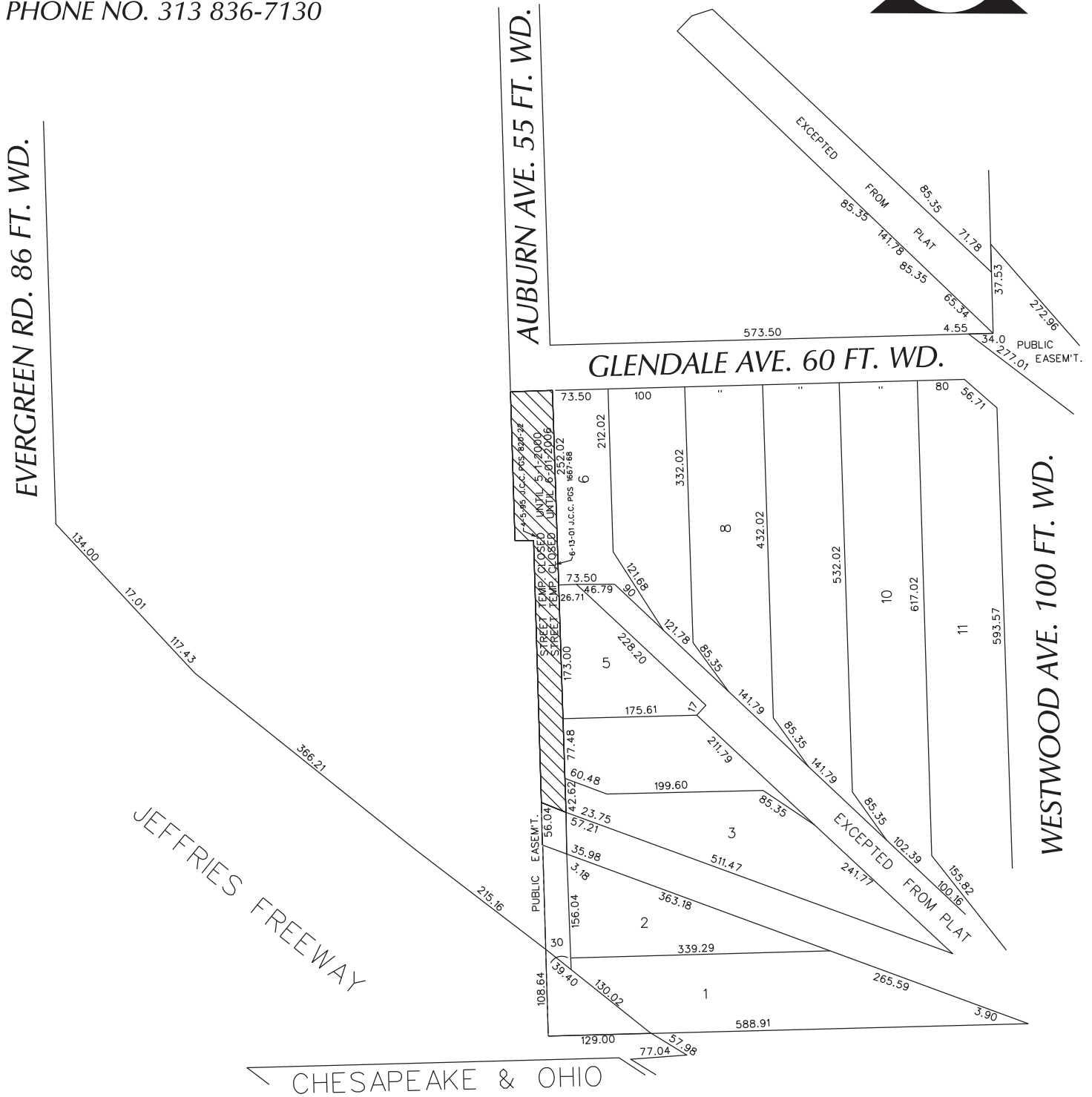
By

Title

Date

Area code – Telephone number

PETITION NO. 277
 FERRINI CONTRACTING CORPORATION
 12735 AUBURN ST.
 DETROIT, MICHIGAN 48223
 C/O L. M. FERRINI
 PHONE NO. 313 836-7130



- RENEWAL OF TEMPORARY STREET CLOSURE

(FOR OFFICE USE ONLY)

CARTO 111 A

B					
A					
DESCRIPTION		DRWN	CHKD	APPD	DATE
REVISIONS					
DRAWN BY	WLW	CHECKED			
DATE	08-12-14	APPROVED			

RENEWAL OF TEMPORARY STREET CLOSURE
 THE NORTH/SOUTH PUBLIC STREET
 VARIOUS WD. IN THE BLOCK BOUND BY
 EVERGREEN RD., AUBURN, WESTWOOD AVE.
 AND CHESAPEAKE & OHIO R.R.

CITY OF DETROIT CITY ENGINEERING DEPARTMENT SURVEY BUREAU	
JOB NO.	01-01
DRWG. NO.	X 277

PROVISIONS FOR TEMPORARY CLOSING

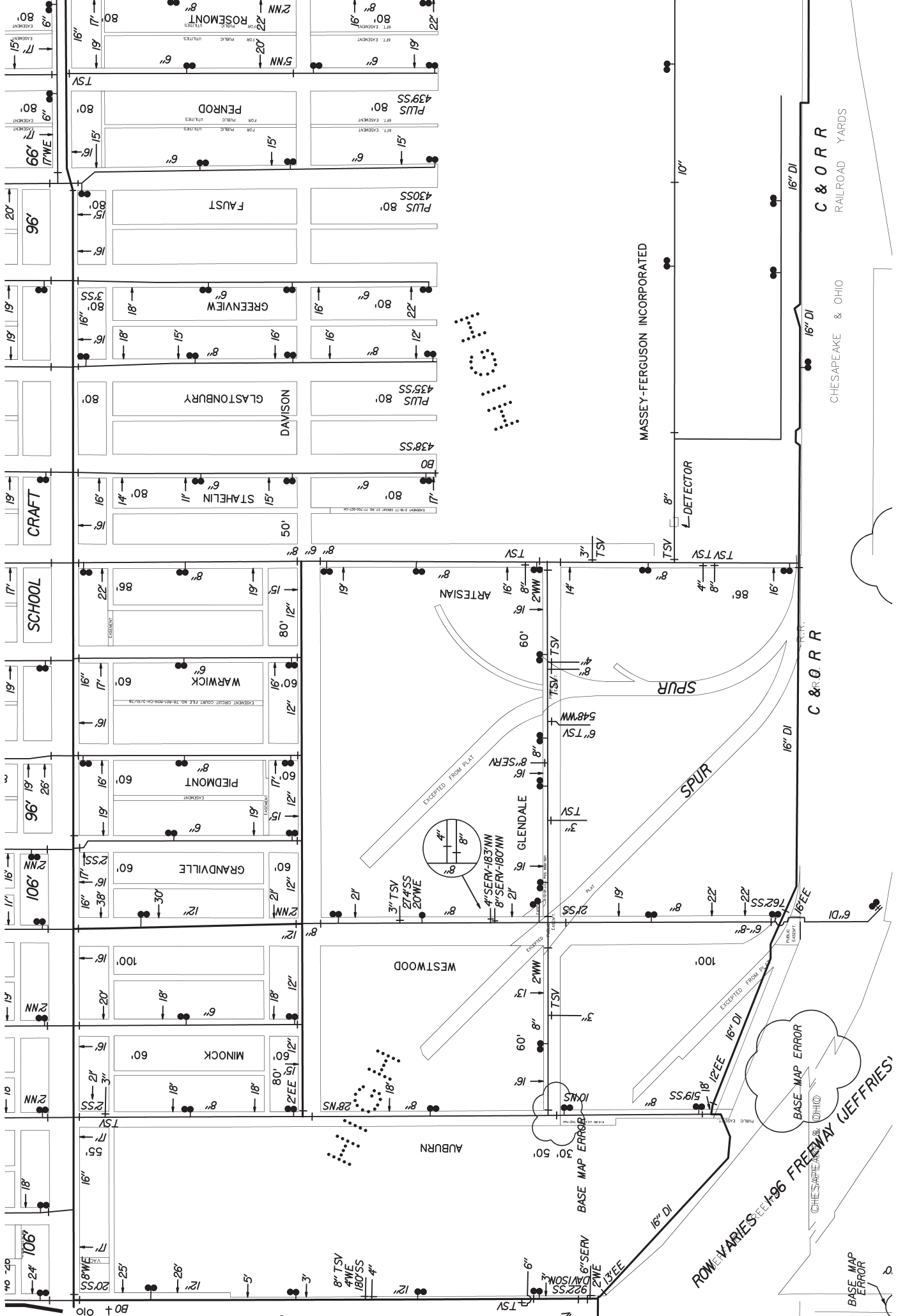
We will agree to the proposed temporary closing subject to the fulfilling of the following provisions:

1. Detroit Water and Sewerage Department forces shall have free and easy access to the water main and sewer facilities at all times to permit proper operation, maintenance and if required, alteration or repair of the water main and sewer facilities. Free and easy access shall mean that no structures or storage of materials will be allowed upon the temporarily closed street to hinder the movement of maintenance equipment.
2. Where a fence is placed across the temporarily closed portion of a street/alley, then a gate must be installed to permit access for DWSD forces. The gate shall remain unlocked 24 hours a day, unless a guard is stationed near the gate to allow the Detroit Water and Sewerage Department ingress and egress at any time to and from the temporarily closed street. The minimum dimensions of the gate or gates shall provide 15 foot vertical and 13 foot horizontal clearances for freedom of DWSD equipment movement.
3. Should the water main and/or sewer facilities be broken or damaged as a result of any action on the part of the petitioner or assigns, then in such event the petitioner or assigns shall be liable for all costs incident to the repair of such broken or damaged water main and appurtenances, and waives all claims for damages.

These provisions must be made a part of the City Council's Resolution granting the temporary closing of the subject street/alley.

10/29/92

11-0



BASE MAP ERROR

BASE MAP ERROR

BASE MAP ERROR

BASE MAP ERROR

ROWEN AVENUE 196 FREEWAY (JEFFRIES)

CHESAPEAKE & OHIO

C & O R R

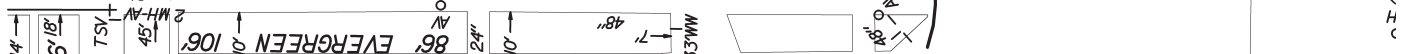
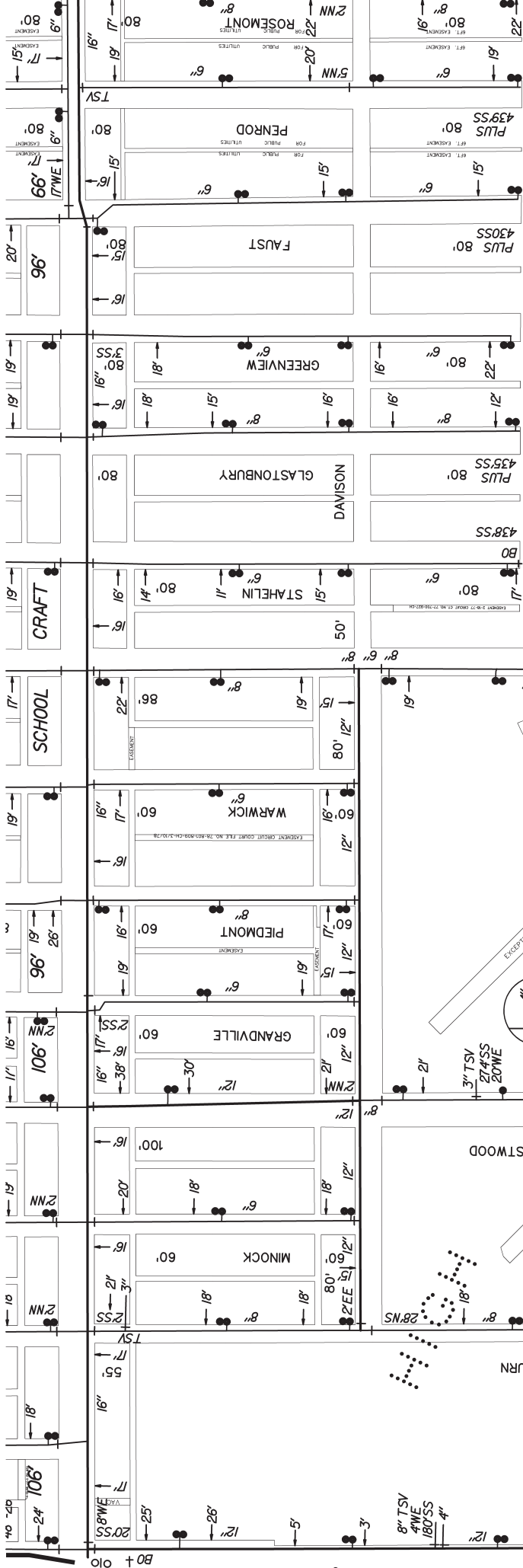
RAILROAD YARDS

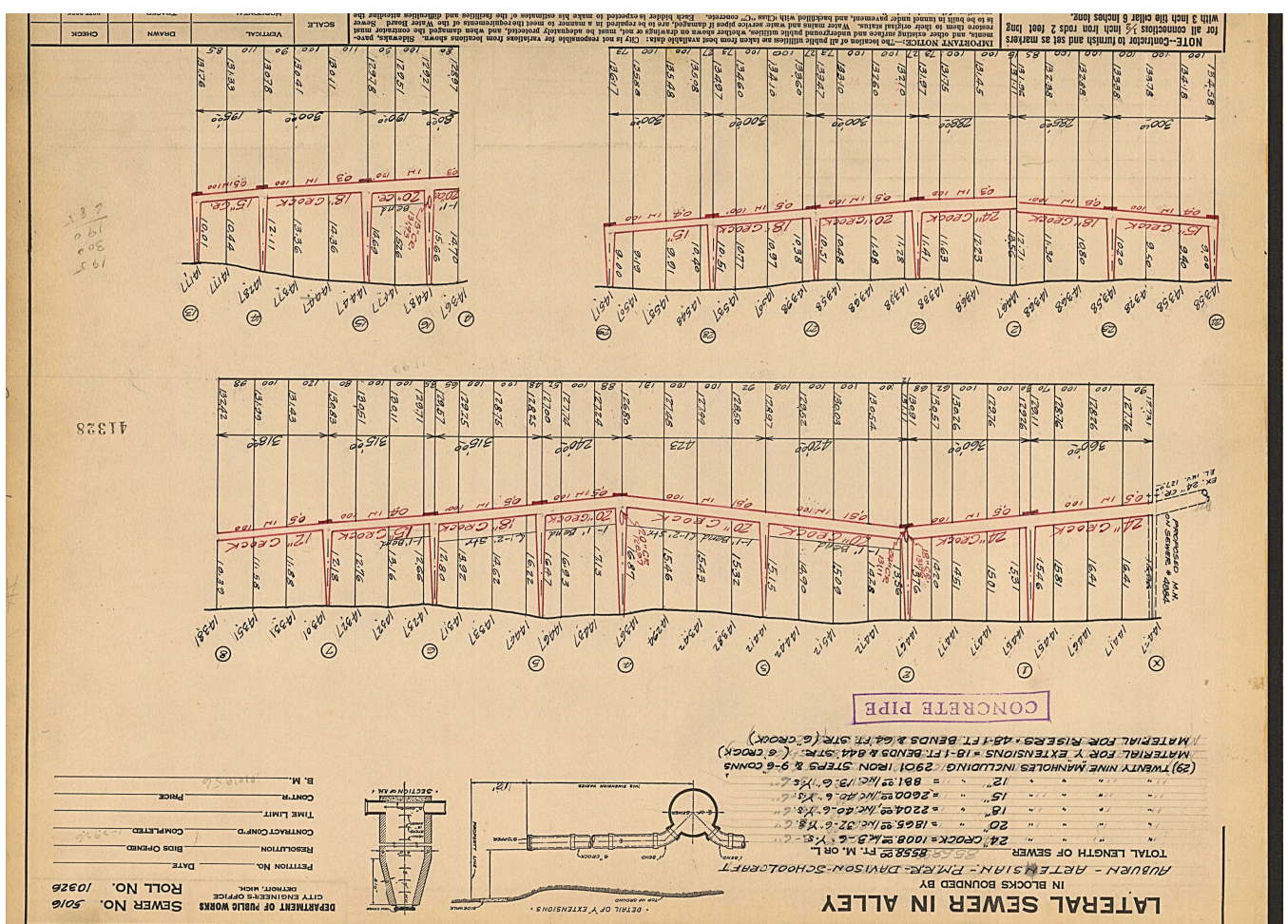
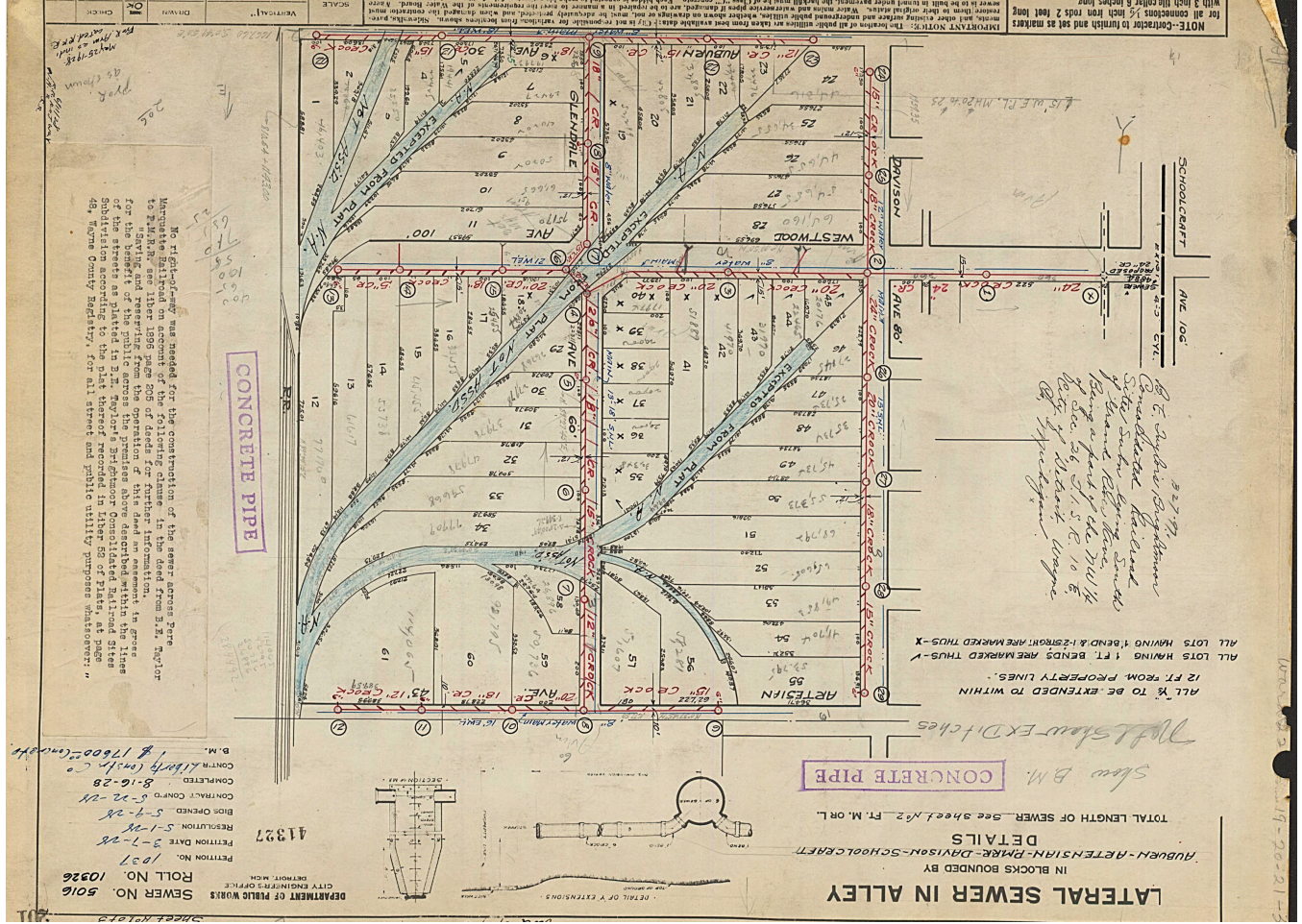
CHESAPEAKE & OHIO

MASSEY-FERGUSON INCORPORATED

SPUR

SPUR





NOTE - Contractor to furnish and set as markers for all connections 3/8 inch from rods 2 foot long with 3 inch high collar 6 inches long.

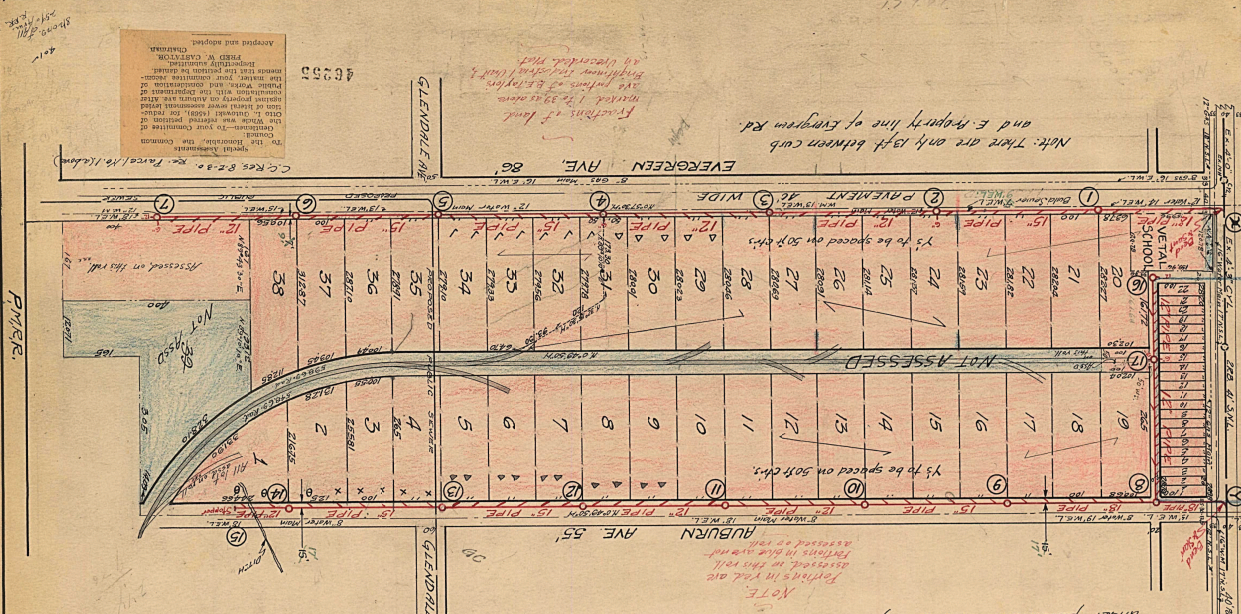
IMPORTANT NOTICE - The location of all public utilities as taken from best available data. City is not responsible for omissions from location shown. Shown, however, is to be built in trench under pavement, and backfilled with Class "C" concrete. Each holder is expected to make the estimate of the location and distribution of the utilities shown in this plan. Water mains and water service pipe if damaged, are to be replaced in a manner to meet the requirements of the Water Board. Sewer lines are to be laid in trench under pavement, and backfilled with Class "C" concrete. Each holder is expected to make the estimate of the location and distribution of the utilities shown in this plan.

IN BLOCKS BOUNDED BY RUBEN - ARTSTEIN - DAVIS - SCHOOLCRAFT TOTAL LENGTH OF SEWER 555.52 FT. M. O. R. L.

24" CROCK = 1000 = 4.5 - 6" Y.C. CR. = 1868.35 M.C. 32.6" Y.C. CR. = 2204.5 M.C. 40.6" Y.C. CR. = 2600.5 M.C. 48" Y.C. CR. = 3113.1 M.C. 60" Y.C. CR. = 3621.7 M.C. 72" Y.C. CR. = 4130.3 M.C. 84" Y.C. CR. = 4637.9 M.C. 96" Y.C. CR. = 5145.5 M.C. 108" Y.C. CR. = 5653.1 M.C. 120" Y.C. CR. = 6160.7 M.C. 132" Y.C. CR. = 6668.3 M.C. 144" Y.C. CR. = 7175.9 M.C. 156" Y.C. CR. = 7683.5 M.C. 168" Y.C. CR. = 8191.1 M.C. 180" Y.C. CR. = 8698.7 M.C. 192" Y.C. CR. = 9206.3 M.C. 204" Y.C. CR. = 9713.9 M.C. 216" Y.C. CR. = 10221.5 M.C. 228" Y.C. CR. = 10729.1 M.C. 240" Y.C. CR. = 11236.7 M.C. 252" Y.C. CR. = 11742.3 M.C. 264" Y.C. CR. = 12249.9 M.C. 276" Y.C. CR. = 12757.5 M.C. 288" Y.C. CR. = 13263.1 M.C. 300" Y.C. CR. = 13770.7 M.C. 312" Y.C. CR. = 14276.3 M.C. 324" Y.C. CR. = 14782.9 M.C. 336" Y.C. CR. = 15289.5 M.C. 348" Y.C. CR. = 15802.1 M.C. 360" Y.C. CR. = 16310.7 M.C. 372" Y.C. CR. = 16817.3 M.C. 384" Y.C. CR. = 17329.9 M.C. 396" Y.C. CR. = 17842.5 M.C. 408" Y.C. CR. = 18350.1 M.C. 420" Y.C. CR. = 18860.7 M.C. 432" Y.C. CR. = 19373.3 M.C. 444" Y.C. CR. = 19886.9 M.C. 456" Y.C. CR. = 20400.5 M.C. 468" Y.C. CR. = 20913.1 M.C. 480" Y.C. CR. = 21420.7 M.C. 492" Y.C. CR. = 21933.3 M.C. 504" Y.C. CR. = 22446.9 M.C. 516" Y.C. CR. = 22960.5 M.C. 528" Y.C. CR. = 23477.1 M.C. 540" Y.C. CR. = 23990.7 M.C. 552" Y.C. CR. = 24503.3 M.C. 564" Y.C. CR. = 25016.9 M.C. 576" Y.C. CR. = 25530.5 M.C. 588" Y.C. CR. = 26042.1 M.C. 600" Y.C. CR. = 26557.7 M.C. 612" Y.C. CR. = 27070.3 M.C. 624" Y.C. CR. = 27586.9 M.C. 636" Y.C. CR. = 28100.5 M.C. 648" Y.C. CR. = 28616.1 M.C. 660" Y.C. CR. = 29130.7 M.C. 672" Y.C. CR. = 29640.3 M.C. 684" Y.C. CR. = 30150.9 M.C. 696" Y.C. CR. = 30660.5 M.C. 708" Y.C. CR. = 31170.1 M.C. 720" Y.C. CR. = 31680.7 M.C. 732" Y.C. CR. = 32190.3 M.C. 744" Y.C. CR. = 32709.9 M.C. 756" Y.C. CR. = 33220.5 M.C. 768" Y.C. CR. = 33730.1 M.C. 780" Y.C. CR. = 34240.7 M.C. 792" Y.C. CR. = 34750.3 M.C. 804" Y.C. CR. = 35260.9 M.C. 816" Y.C. CR. = 35770.5 M.C. 828" Y.C. CR. = 36280.1 M.C. 840" Y.C. CR. = 36789.7 M.C. 852" Y.C. CR. = 37300.3 M.C. 864" Y.C. CR. = 37810.9 M.C. 876" Y.C. CR. = 38320.5 M.C. 888" Y.C. CR. = 38830.1 M.C. 900" Y.C. CR. = 39340.7 M.C. 912" Y.C. CR. = 39850.3 M.C. 924" Y.C. CR. = 40360.9 M.C. 936" Y.C. CR. = 40870.5 M.C. 948" Y.C. CR. = 41380.1 M.C. 960" Y.C. CR. = 41890.7 M.C. 972" Y.C. CR. = 42400.3 M.C. 984" Y.C. CR. = 42910.9 M.C. 996" Y.C. CR. = 43420.5 M.C. 1008" Y.C. CR. = 43930.1 M.C. 1020" Y.C. CR. = 44440.7 M.C. 1032" Y.C. CR. = 44950.3 M.C. 1044" Y.C. CR. = 45460.9 M.C. 1056" Y.C. CR. = 45970.5 M.C. 1068" Y.C. CR. = 46480.1 M.C. 1080" Y.C. CR. = 46990.7 M.C. 1092" Y.C. CR. = 47500.3 M.C. 1104" Y.C. CR. = 48010.9 M.C. 1116" Y.C. CR. = 48520.5 M.C. 1128" Y.C. CR. = 49030.1 M.C. 1140" Y.C. CR. = 49540.7 M.C. 1152" Y.C. CR. = 50050.3 M.C. 1164" Y.C. CR. = 50560.9 M.C. 1176" Y.C. CR. = 51070.5 M.C. 1188" Y.C. CR. = 51580.1 M.C. 1200" Y.C. CR. = 52090.7 M.C. 1212" Y.C. CR. = 52600.3 M.C. 1224" Y.C. CR. = 53110.9 M.C. 1236" Y.C. CR. = 53620.5 M.C. 1248" Y.C. CR. = 54130.1 M.C. 1260" Y.C. CR. = 54640.7 M.C. 1272" Y.C. CR. = 55150.3 M.C. 1284" Y.C. CR. = 55660.9 M.C. 1296" Y.C. CR. = 56170.5 M.C. 1308" Y.C. CR. = 56680.1 M.C. 1320" Y.C. CR. = 57190.7 M.C. 1332" Y.C. CR. = 57700.3 M.C. 1344" Y.C. CR. = 58210.9 M.C. 1356" Y.C. CR. = 58720.5 M.C. 1368" Y.C. CR. = 59230.1 M.C. 1380" Y.C. CR. = 59740.7 M.C. 1392" Y.C. CR. = 60250.3 M.C. 1404" Y.C. CR. = 60760.9 M.C. 1416" Y.C. CR. = 61270.5 M.C. 1428" Y.C. CR. = 61780.1 M.C. 1440" Y.C. CR. = 62290.7 M.C. 1452" Y.C. CR. = 62800.3 M.C. 1464" Y.C. CR. = 63310.9 M.C. 1476" Y.C. CR. = 63820.5 M.C. 1488" Y.C. CR. = 64330.1 M.C. 1500" Y.C. CR. = 64840.7 M.C. 1512" Y.C. CR. = 65350.3 M.C. 1524" Y.C. CR. = 65860.9 M.C. 1536" Y.C. CR. = 66370.5 M.C. 1548" Y.C. CR. = 66880.1 M.C. 1560" Y.C. CR. = 67390.7 M.C. 1572" Y.C. CR. = 67900.3 M.C. 1584" Y.C. CR. = 68410.9 M.C. 1596" Y.C. CR. = 68920.5 M.C. 1608" Y.C. CR. = 69430.1 M.C. 1620" Y.C. CR. = 69940.7 M.C. 1632" Y.C. CR. = 70450.3 M.C. 1644" Y.C. CR. = 70960.9 M.C. 1656" Y.C. CR. = 71470.5 M.C. 1668" Y.C. CR. = 71980.1 M.C. 1680" Y.C. CR. = 72490.7 M.C. 1692" Y.C. CR. = 73000.3 M.C. 1704" Y.C. CR. = 73510.9 M.C. 1716" Y.C. CR. = 74020.5 M.C. 1728" Y.C. CR. = 74530.1 M.C. 1740" Y.C. CR. = 75040.7 M.C. 1752" Y.C. CR. = 75550.3 M.C. 1764" Y.C. CR. = 76060.9 M.C. 1776" Y.C. CR. = 76570.5 M.C. 1788" Y.C. CR. = 77080.1 M.C. 1800" Y.C. CR. = 77590.7 M.C. 1812" Y.C. CR. = 78100.3 M.C. 1824" Y.C. CR. = 78610.9 M.C. 1836" Y.C. CR. = 79120.5 M.C. 1848" Y.C. CR. = 79630.1 M.C. 1860" Y.C. CR. = 80140.7 M.C. 1872" Y.C. CR. = 80650.3 M.C. 1884" Y.C. CR. = 81160.9 M.C. 1896" Y.C. CR. = 81670.5 M.C. 1908" Y.C. CR. = 82180.1 M.C. 1920" Y.C. CR. = 82690.7 M.C. 1932" Y.C. CR. = 83200.3 M.C. 1944" Y.C. CR. = 83710.9 M.C. 1956" Y.C. CR. = 84220.5 M.C. 1968" Y.C. CR. = 84730.1 M.C. 1980" Y.C. CR. = 85240.7 M.C. 1992" Y.C. CR. = 85750.3 M.C. 2004" Y.C. CR. = 86260.9 M.C. 2016" Y.C. CR. = 86770.5 M.C. 2028" Y.C. CR. = 87280.1 M.C. 2040" Y.C. CR. = 87790.7 M.C. 2052" Y.C. CR. = 88300.3 M.C. 2064" Y.C. CR. = 88810.9 M.C. 2076" Y.C. CR. = 89320.5 M.C. 2088" Y.C. CR. = 89830.1 M.C. 2100" Y.C. CR. = 90340.7 M.C. 2112" Y.C. CR. = 90850.3 M.C. 2124" Y.C. CR. = 91360.9 M.C. 2136" Y.C. CR. = 91870.5 M.C. 2148" Y.C. CR. = 92380.1 M.C. 2160" Y.C. CR. = 92890.7 M.C. 2172" Y.C. CR. = 93400.3 M.C. 2184" Y.C. CR. = 93910.9 M.C. 2196" Y.C. CR. = 94420.5 M.C. 2208" Y.C. CR. = 94930.1 M.C. 2220" Y.C. CR. = 95440.7 M.C. 2232" Y.C. CR. = 95950.3 M.C. 2244" Y.C. CR. = 96460.9 M.C. 2256" Y.C. CR. = 96970.5 M.C. 2268" Y.C. CR. = 97480.1 M.C. 2280" Y.C. CR. = 97990.7 M.C. 2292" Y.C. CR. = 98500.3 M.C. 2304" Y.C. CR. = 99010.9 M.C. 2316" Y.C. CR. = 99520.5 M.C. 2328" Y.C. CR. = 100030.1 M.C. 2340" Y.C. CR. = 100540.7 M.C. 2352" Y.C. CR. = 101050.3 M.C. 2364" Y.C. CR. = 101560.9 M.C. 2376" Y.C. CR. = 102070.5 M.C. 2388" Y.C. CR. = 102580.1 M.C. 2400" Y.C. CR. = 103090.7 M.C. 2412" Y.C. CR. = 103600.3 M.C. 2424" Y.C. CR. = 104110.9 M.C. 2436" Y.C. CR. = 104620.5 M.C. 2448" Y.C. CR. = 105130.1 M.C. 2460" Y.C. CR. = 105640.7 M.C. 2472" Y.C. CR. = 106150.3 M.C. 2484" Y.C. CR. = 106660.9 M.C. 2496" Y.C. CR. = 107170.5 M.C. 2508" Y.C. CR. = 107680.1 M.C. 2520" Y.C. CR. = 108190.7 M.C. 2532" Y.C. CR. = 108700.3 M.C. 2544" Y.C. CR. = 109210.9 M.C. 2556" Y.C. CR. = 109720.5 M.C. 2568" Y.C. CR. = 110230.1 M.C. 2580" Y.C. CR. = 110740.7 M.C. 2592" Y.C. CR. = 111250.3 M.C. 2604" Y.C. CR. = 111760.9 M.C. 2616" Y.C. CR. = 112270.5 M.C. 2628" Y.C. CR. = 112780.1 M.C. 2640" Y.C. CR. = 113290.7 M.C. 2652" Y.C. CR. = 113800.3 M.C. 2664" Y.C. CR. = 114310.9 M.C. 2676" Y.C. CR. = 114820.5 M.C. 2688" Y.C. CR. = 115330.1 M.C. 2700" Y.C. CR. = 115840.7 M.C. 2712" Y.C. CR. = 116350.3 M.C. 2724" Y.C. CR. = 116860.9 M.C. 2736" Y.C. CR. = 117370.5 M.C. 2748" Y.C. CR. = 117880.1 M.C. 2760" Y.C. CR. = 118390.7 M.C. 2772" Y.C. CR. = 118900.3 M.C. 2784" Y.C. CR. = 119410.9 M.C. 2796" Y.C. CR. = 119920.5 M.C. 2808" Y.C. CR. = 120430.1 M.C. 2820" Y.C. CR. = 120940.7 M.C. 2832" Y.C. CR. = 121450.3 M.C. 2844" Y.C. CR. = 121960.9 M.C. 2856" Y.C. CR. = 122470.5 M.C. 2868" Y.C. CR. = 122980.1 M.C. 2880" Y.C. CR. = 123490.7 M.C. 2892" Y.C. CR. = 124000.3 M.C. 2904" Y.C. CR. = 124510.9 M.C. 2916" Y.C. CR. = 125020.5 M.C. 2928" Y.C. CR. = 125530.1 M.C. 2940" Y.C. CR. = 126040.7 M.C. 2952" Y.C. CR. = 126550.3 M.C. 2964" Y.C. CR. = 127060.9 M.C. 2976" Y.C. CR. = 127570.5 M.C. 2988" Y.C. CR. = 128080.1 M.C. 3000" Y.C. CR. = 128590.7 M.C. 3012" Y.C. CR. = 129100.3 M.C. 3024" Y.C. CR. = 129610.9 M.C. 3036" Y.C. CR. = 130120.5 M.C. 3048" Y.C. CR. = 130630.1 M.C. 3060" Y.C. CR. = 131140.7 M.C. 3072" Y.C. CR. = 131650.3 M.C. 3084" Y.C. CR. = 132160.9 M.C. 3096" Y.C. CR. = 132670.5 M.C. 3108" Y.C. CR. = 133180.1 M.C. 3120" Y.C. CR. = 133690.7 M.C. 3132" Y.C. CR. = 134200.3 M.C. 3144" Y.C. CR. = 134710.9 M.C. 3156" Y.C. CR. = 135220.5 M.C. 3168" Y.C. CR. = 135730.1 M.C. 3180" Y.C. CR. = 136240.7 M.C. 3192" Y.C. CR. = 136750.3 M.C. 3204" Y.C. CR. = 137260.9 M.C. 3216" Y.C. CR. = 137770.5 M.C. 3228" Y.C. CR. = 138280.1 M.C. 3240" Y.C. CR. = 138790.7 M.C. 3252" Y.C. CR. = 139300.3 M.C. 3264" Y.C. CR. = 139810.9 M.C. 3276" Y.C. CR. = 140320.5 M.C. 3288" Y.C. CR. = 140830.1 M.C. 3300" Y.C. CR. = 141340.7 M.C. 3312" Y.C. CR. = 141850.3 M.C. 3324" Y.C. CR. = 142360.9 M.C. 3336" Y.C. CR. = 142870.5 M.C. 3348" Y.C. CR. = 143380.1 M.C. 3360" Y.C. CR. = 143890.7 M.C. 3372" Y.C. CR. = 144400.3 M.C. 3384" Y.C. CR. = 144910.9 M.C. 3396" Y.C. CR. = 145420.5 M.C. 3408" Y.C. CR. = 145930.1 M.C. 3420" Y.C. CR. = 146440.7 M.C. 3432" Y.C. CR. = 146950.3 M.C. 3444" Y.C. CR. = 147460.9 M.C. 3456" Y.C. CR. = 147970.5 M.C. 3468" Y.C. CR. = 148480.1 M.C. 3480" Y.C. CR. = 148990.7 M.C. 3492" Y.C. CR. = 149500.3 M.C. 3504" Y.C. CR. = 150010.9 M.C. 3516" Y.C. CR. = 150520.5 M.C. 3528" Y.C. CR. = 151030.1 M.C. 3540" Y.C. CR. = 151540.7 M.C. 3552" Y.C. CR. = 152050.3 M.C. 3564" Y.C. CR. = 152560.9 M.C. 3576" Y.C. CR. = 153070.5 M.C. 3588" Y.C. CR. = 153580.1 M.C. 3600" Y.C. CR. = 154090.7 M.C. 3612" Y.C. CR. = 154600.3 M.C. 3624" Y.C. CR. = 155110.9 M.C. 3636" Y.C. CR. = 155620.5 M.C. 3648" Y.C. CR. = 156130.1 M.C. 3660" Y.C. CR. = 156640.7 M.C. 3672" Y.C. CR. = 157150.3 M.C. 3684" Y.C. CR. = 157660.9 M.C. 3696" Y.C. CR. = 158170.5 M.C. 3708" Y.C. CR. = 158680.1 M.C. 3720" Y.C. CR. = 159190.7 M.C. 3732" Y.C. CR. = 159700.3 M.C. 3744" Y.C. CR. = 160210.9 M.C. 3756" Y.C. CR. = 160720.5 M.C. 3768" Y.C. CR. = 161230.1 M.C. 3780" Y.C. CR. = 161740.7 M.C. 3792" Y.C. CR. = 162250.3 M.C. 3804" Y.C. CR. = 162760.9 M.C. 3816" Y.C. CR. = 163270.5 M.C. 3828" Y.C. CR. = 163780.1 M.C. 3840" Y.C. CR. = 164290.7 M.C. 3852" Y.C. CR. = 164800.3 M.C. 3864" Y.C. CR. = 165310.9 M.C. 3876" Y.C. CR. = 165820.5 M.C. 3888" Y.C. CR. = 166330.1 M.C. 3900" Y.C. CR. = 166840.7 M.C. 3912" Y.C. CR. = 167350.3 M.C. 3924" Y.C. CR. = 167860.9 M.C. 3936" Y.C. CR. = 168370.5 M.C. 3948" Y.C. CR. = 168880.1 M.C. 3960" Y.C. CR. = 169390.7 M.C. 3972" Y.C. CR. = 169900.3 M.C. 3984" Y.C. CR. = 170410.9 M.C. 3996" Y.C. CR. = 170920.5 M.C. 4008" Y.C. CR. = 171430.1 M.C. 4020" Y.C. CR. = 171940.7 M.C. 4032" Y.C. CR. = 172450.3 M.C. 4044" Y.C. CR. = 172960.9 M.C. 4056" Y.C. CR. = 173470.5 M.C. 4068" Y.C. CR. = 173980.1 M.C. 4080" Y.C. CR. = 174490.7 M.C. 4092" Y.C. CR. = 175000.3 M.C. 4104" Y.C. CR. = 175510.9 M.C. 4116" Y.C. CR. = 176020.5 M.C. 4128" Y.C. CR. = 176530.1 M.C. 4140" Y.C. CR. = 177040.7 M.C. 4152" Y.C. CR. = 177550.3 M.C. 4164" Y.C. CR. = 178060.9 M.C. 4176" Y.C. CR. = 178570.5 M.C. 4188" Y.C. CR. = 179080.1 M.C. 4200" Y.C. CR. = 179590.7 M.C. 4212" Y.C. CR. = 180100.3 M.C. 4224" Y.C. CR. = 180610.9 M.C. 4236" Y.C. CR. = 181120.5 M.C. 4248" Y.C. CR. = 181630.1 M.C. 4260" Y.C. CR. = 182140.7 M.C. 4272" Y.C. CR. = 182650.3 M.C. 4284" Y.C. CR. = 183160.9 M.C. 4296" Y.C. CR. = 183670.5 M.C. 4308" Y.C. CR. = 184180.1 M.C. 4320" Y.C. CR. = 184690.7 M.C. 4332" Y.C. CR. = 185200.3 M.C. 4344" Y.C. CR. = 185710.9 M.C. 4356" Y.C. CR. = 186220.5 M.C. 4368" Y.C. CR. = 186730.1 M.C. 4380" Y.C. CR. = 187240.7 M.C. 4392" Y.C. CR. = 187750.3 M.C. 4404" Y.C. CR. = 188260.9 M.C. 4416" Y.C. CR. = 188770.5 M.C. 4428" Y.C. CR. = 189280.1 M.C. 4440" Y.C. CR. = 189790.7 M.C. 4452" Y.C. CR. = 190300.3 M.C. 4464" Y.C. CR. = 190810.9 M.C. 4476" Y.C. CR. = 191320.5 M.C. 4488" Y.C. CR. = 191830.1 M.C. 4500" Y.C. CR. = 192340.7 M.C. 4512" Y.C. CR. = 192850.3 M.C. 4524" Y.C. CR. = 193360.9 M.C. 4536" Y.C. CR. = 193870.5 M.C. 4548" Y.C. CR. = 194380.1 M.C. 4560" Y.C. CR. = 194890.7 M.C. 4572" Y.C. CR. = 195400.3 M.C. 4584" Y.C. CR. = 195910.9 M.C. 4596" Y.C. CR. = 196420.5 M.C. 4608" Y.C. CR. = 196930.1 M.C. 4620" Y.C. CR. = 197440.7 M.C. 4632" Y.C. CR. = 197950.3 M.C. 4644" Y.C. CR. = 198460.9 M.C. 4656" Y.C. CR. = 198970.5 M.C. 4668" Y.C. CR. = 199480.1 M.C. 4680" Y.C. CR. = 199990.7 M.C. 4692" Y.C. CR. = 200500.3 M.C. 4704" Y.C. CR. = 201010.9 M.C. 4716" Y.C. CR. = 201520.5 M.C. 4728" Y.C. CR. = 202030.1 M.C. 4740" Y.C. CR. = 202540.7 M.C. 4752" Y.C. CR. = 2

NOTE-Contractor to furnish and set markers for all connections 1/2 inch from rods 2 foot long with 3 inch thick collar 6 inches long.

IMPORTANT NOTE-This location of all public utilities are taken from the location from location shown. Sewer, gas, water, electric, telephone and cable lines are shown in red. The location of all public utilities are taken from the location from location shown. Sewer, gas, water, electric, telephone and cable lines are shown in red. The location of all public utilities are taken from the location from location shown. Sewer, gas, water, electric, telephone and cable lines are shown in red.



LATERAL SEWER IN STREET

IN AUBURN & EVERGREEN BETWEEN SCHOOLCRAFT & P.M.R.

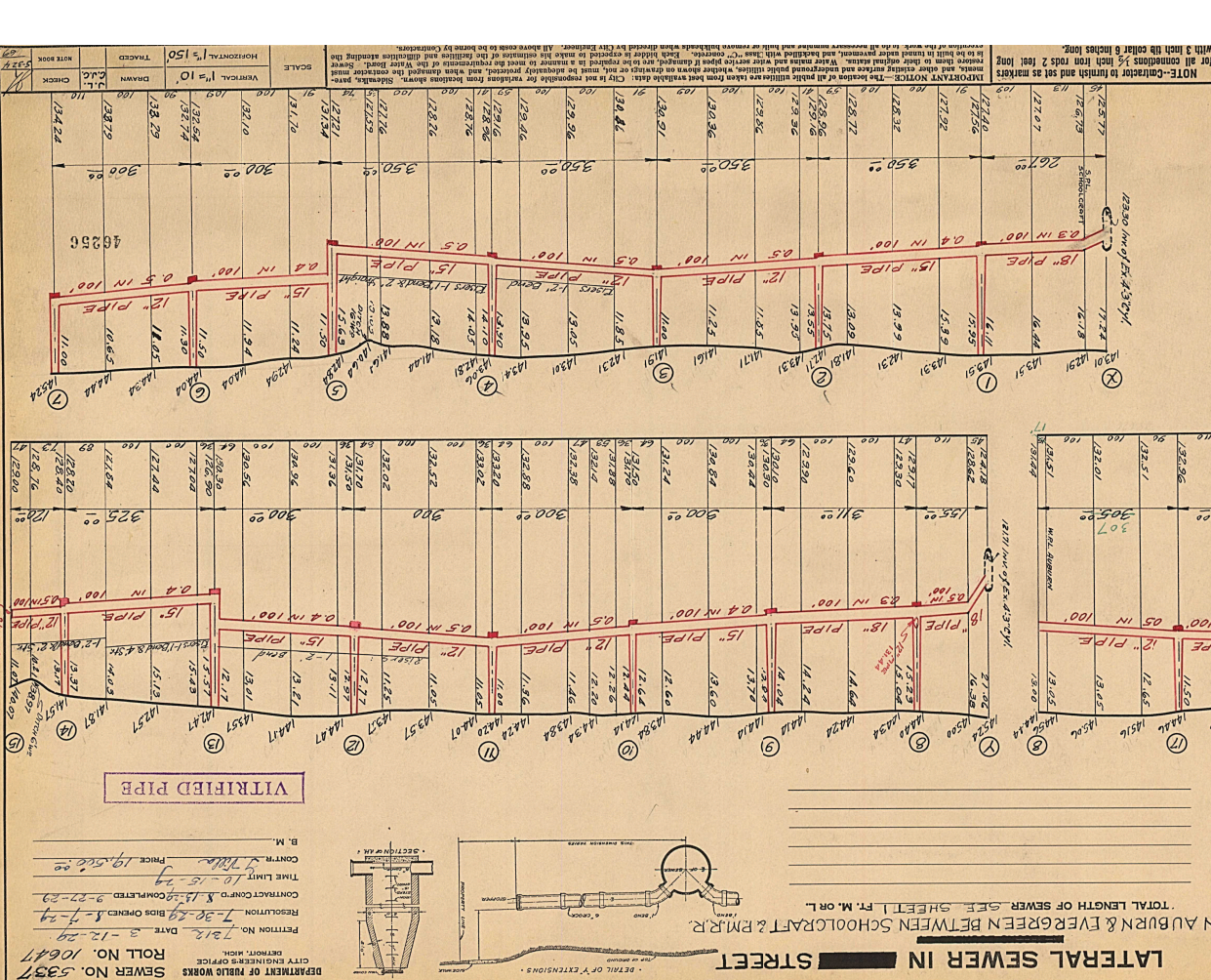
TOTAL LENGTH OF SEWER 4859.00 FT. M. O.R.L.

18" PIPE	733.00
15" PIPE	1925.00
12" PIPE	2201.00
12-1 FT BENDS	15.00
16 SIXTEEN STANDARD MANHOLES, INC. 152 LEAN STEEL	147.00
40 FT. STRAIGHT PIPE (6" P.P.E.)	40.00
TOTAL	4859.00

NOTE: All existing connections to be brought down to new sewer catch basins and pavement to be replaced to be replaced to match existing pavement and backfilled with class C concrete.

NOTE: Existing connections to be brought down to new sewer catch basins and pavement to be replaced to match existing pavement and backfilled with class C concrete.

NOTE: Existing connections to be brought down to new sewer catch basins and pavement to be replaced to match existing pavement and backfilled with class C concrete.



LATERAL SEWER IN STREET

IN AUBURN & EVERGREEN BETWEEN SCHOOLCRAFT & P.M.R.

TOTAL LENGTH OF SEWER SEE SHEET F. M. O.R.L.

DEPARTMENT OF PUBLIC WORKS
CITY ENGINEERS OFFICE
ROLL NO. 10647
SEWER NO. 5337