

DTE Energy - Gas Co.
Data Integrity and Technology
One Energy Plaza, WCB-1836
City of Detroit, MI 48226

June 11, 2014

Richard Doherty, CED DPW Head Engineer

City Engineering Division, DPW
65 Cadillac Square, Suite 900
Detroit, Michigan 48226-2873

RE: Petition #276

Dated: 6/9/2014

- Not involved. **See Remarks**
- Involved: but asking you to hold action on this petition until further notice.
- Involved but have no objection to the property change - - provided that an easement of the full width of the public right-of-way (street, alley or other public place) is reserved.
- Involved: the nature of our services, and the estimated costs of removing, rerouting or abandonment of such all gas mains and/or services

REMARKS:

Involved but have no objections to the property change, provided that the Renewal of Temporary Street Closure is a portion of Hildale Ave, 60 Ft. Wd. between Filer and Sherwood Ave. is Reserved as a Utility Easement. Reason being is that, DTE Energy Gas Co. have existing Gas main lines (8" STL-10# 1989) and (4" CI-2# 1950), in the proposed area of Temporary Street Closure. Also existing Gas Service lines (2" PLA - 1987) that feed Address 18615 Sherwood that is in the proposed area in the Street. Otherwise, contact DTE Energy Gas Company Public Improvement Department: Laura Forrester at 313-389-7261 (Gas Planner), for the estimated cost of our services in abandoning/removing/ and/or relocating/rerouting, including the survey, design and drawing of our utilities. See enclosed strip prints for your use and information regarding our gas main locations.

Please abide by Public Act 174, three (3) working days before you dig, dial toll free MISS DIG at: 1 - 800 - 482 - 7171.

DTE Energy Gas Leak Emergency Phone Number: 1- 800 - 947 - 5000.

Sincerely,

***LS* Russell E Thornton**

Drafter
Data Integrity and Technology

RET/
Enclosure

Gas GIS Legend

Service Symbols

- EndCap
- LoopedService
- Section
- EFV Relief Valve
- AbandonedService
- Aban. Service pipe

NOTE: Service line style is the same as the main it is tied into

Customer Events

- Service Event
- CUTCAP (CCtype, location)

AbandonedGasPipeSymbol

- Abandoned Gas Device
- End Cap
- Section Symbol

Gas Pipe Protection

- Casing
- Shield
- Sleeve

Land

- Bridge
- DrainCreek
- Easement
- LotLine
- RailRoad
- RightOfWay
- Tunnel
- Water
- Street Centerline
- Building
- Landmark
- BrownField
- Known Sites of Environmental Contamination DEQ Dec2008

CPAnode

- Single
- Multiple

CP Rectifier

- Rectifier

Test Point

- DOT
- Regular TW

Tracer Wire

- Tracer Wire

Gas Valve

- Main, Closed
- Main, Open
- Service, Closed
- Service, Open

Regulator Station

- District
- Secondary
- Service

Controllable Fitting

- PCF Pressure Control Fitting
- SSF Short Stop
- Stopple Fitting
- Distribution Tiein
- Subtransmission Tiein
- Transmission Tiein

NonControllableFitting

- Branch
- Cap
- Coupling
- Ell
- Insulated
- Reducer
- Section
- Tee
- Transition
- <all other values>

Material Type

- CU - Copper
- CI - Cast Iron
- PLA - Plastic
- STL - Bare Steel
- STL - Coated Steel
- PLA - Plastic, Joint Trench
- OTR - Other
- UN - Unknown
- WI - Wrought Iron
- <all other values>
- Inactive - all material types

Main Lines Styles

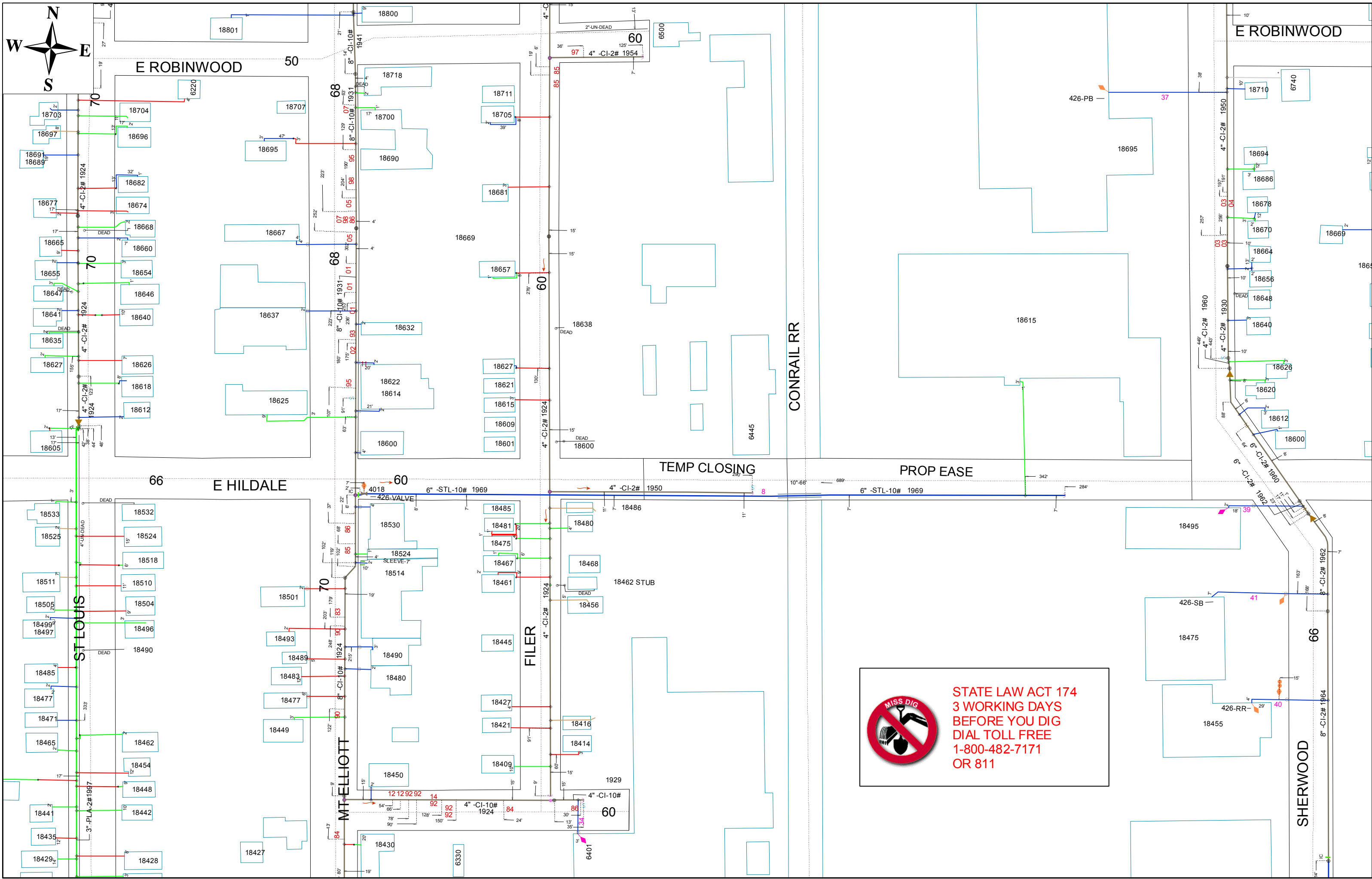
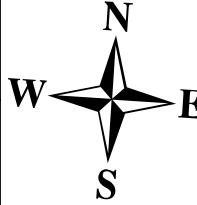
- In Design Main (Proposed)
- Distribution Main
- Distribution - Joint Trench
- Subtransmission Main
- Transmission
- Exposed Pipe (Coated Steel)
- Pipe Lining (CI or WI)
- AbandonedGasPipe

Other Symbols

- Drip
- Flow Arrow
- Foreign Utility Pipe
- Public Improvement
- Pressure Monitoring Device
- Leak Report - Leak Repair
- Automated Repairs
- LowPoint
- Summit

Scaled Areas

- 10, 30, 50 SCALE



STATE LAW ACT 174
 3 WORKING DAYS
 BEFORE YOU DIG
 DIAL TOLL FREE
 1-800-482-7171
 OR 811