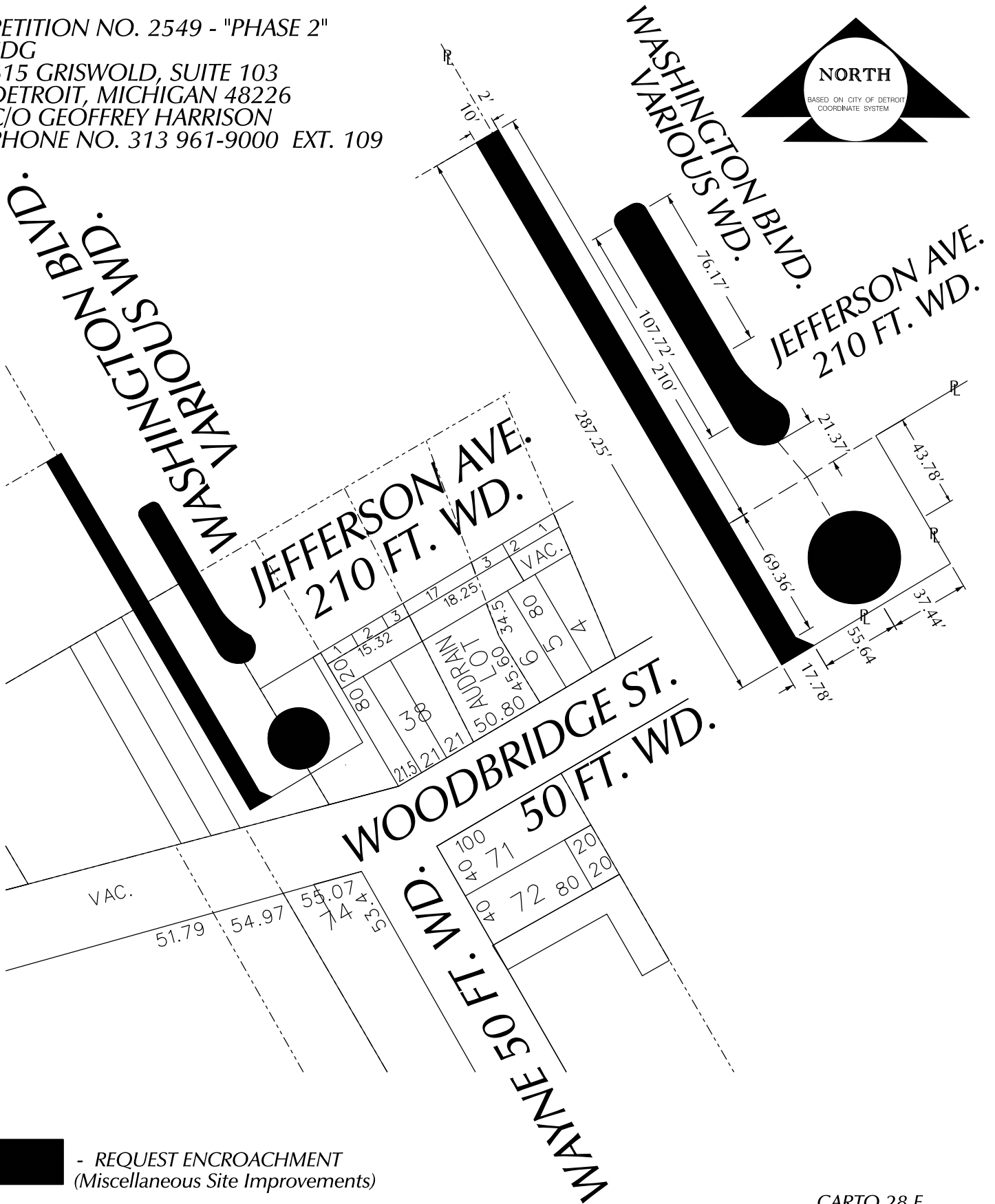


PETITION NO. 2549 - "PHASE 2"
 SDG
 615 GRISWOLD, SUITE 103
 DETROIT, MICHIGAN 48226
 C/O GEOFFREY HARRISON
 PHONE NO. 313 961-9000 EXT. 109



- REQUEST ENCROACHMENT
 (Miscellaneous Site Improvements)

(FOR OFFICE USE ONLY)

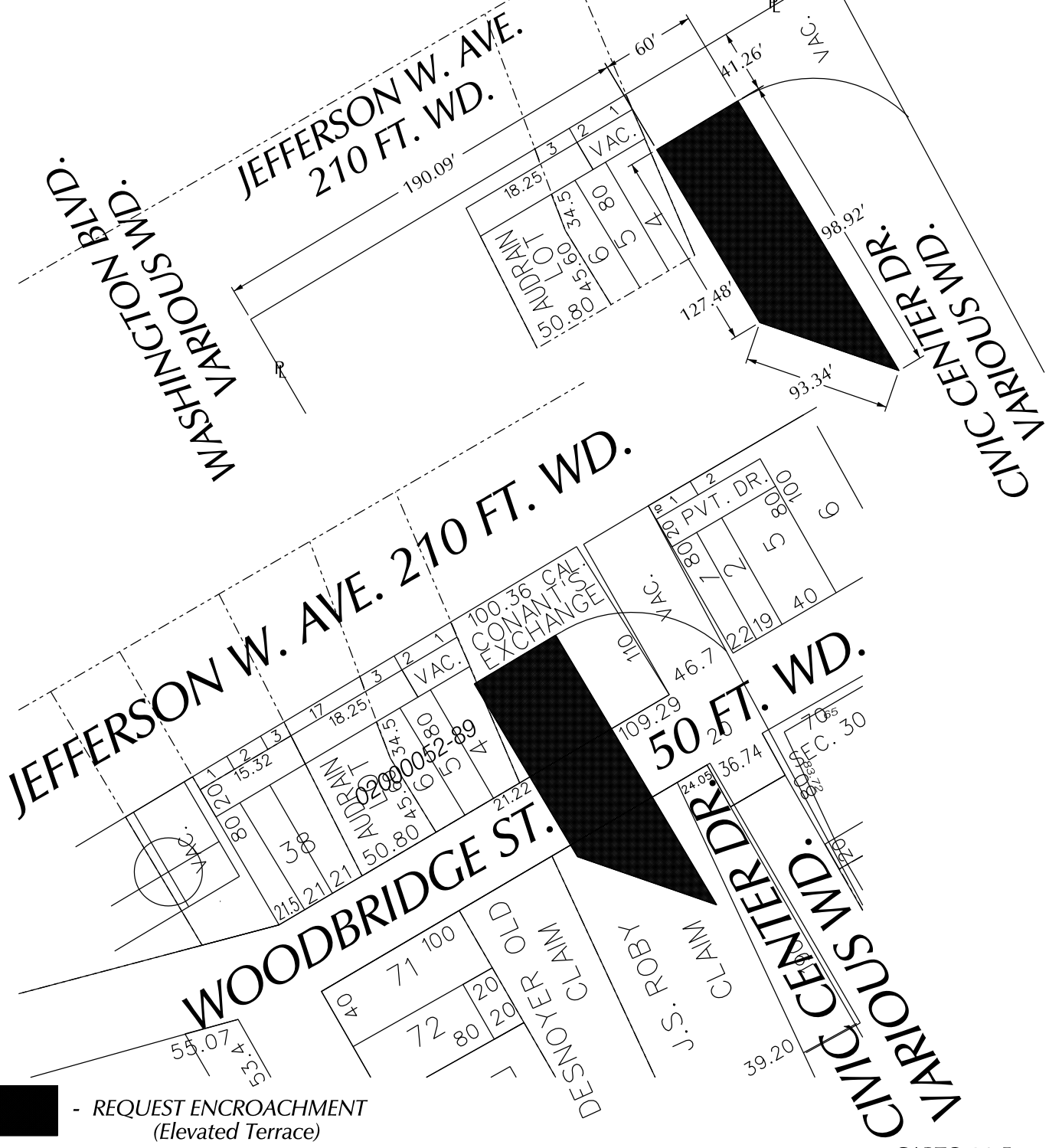
CARTO 28 E

B					
A					
DESCRIPTION	DRWN	CHKD	APPD	DATE	
REVISIONS					
DRAWN BY	WLW		CHECKED		
DATE	05-20-14		APPROVED		

REQUEST ENCROACHMENT
 INTO
 WASHINGTON BLVD. AND JEFFERSON W.
 (MISCELLANEOUS SITE IMPROVEMENTS)

CITY OF DETROIT CITY ENGINEERING DEPARTMENT SURVEY BUREAU	
JOB NO.	01-01
DRWG. NO.	X 2549

PETITION NO. 2549 - "PHASE 2"
 SDG
 615 GRISWOLD, SUITE 103
 DETROIT, MICHIGAN 48226
 C/O GEOFFREY HARRISON
 PHONE NO. 313 961-9000 EXT. 109



- REQUEST ENCROACHMENT
 (Elevated Terrace)

(FOR OFFICE USE ONLY)

CARTO 28 E

B					
A					
DESCRIPTION		DRWN	CHKD	APPD	DATE
REVISIONS					
DRAWN BY	WLW	CHECKED			
DATE	05-20-14	APPROVED			

**REQUEST ENCROACHMENT
 INTO
 CIVIC CENTER DR.
 (ELEVATED TERRACE)**

CITY OF DETROIT CITY ENGINEERING DEPARTMENT SURVEY BUREAU	
JOB NO.	01-01
DRWG. NO.	X 2549