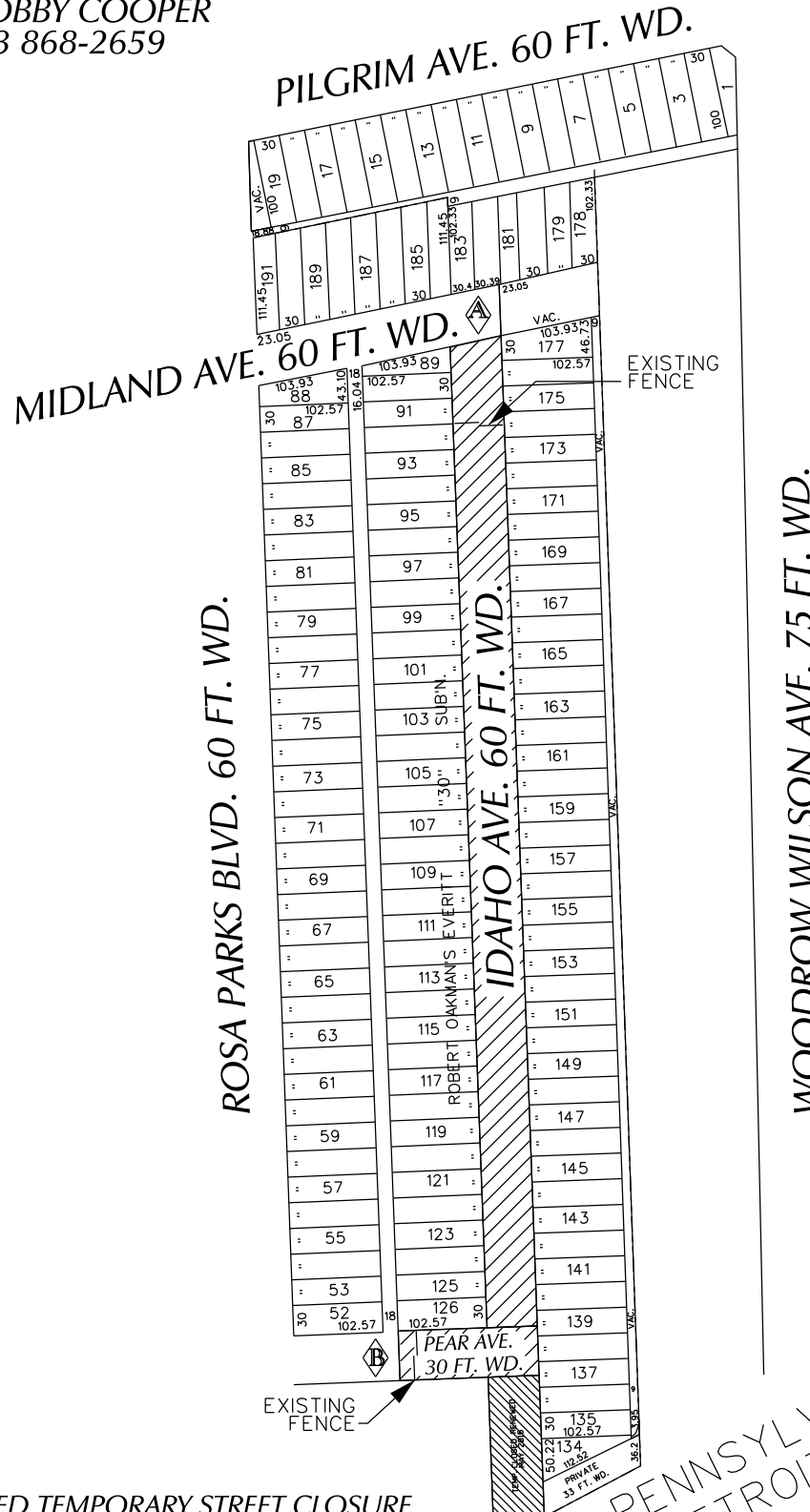


PETITION NO. 252
 TWELFTH STREET MISSIONARY BAPTIST CHURCH
 1840 MIDLAND AVE.
 DETROIT, MICHIGAN 48238
 C/O TRUSTEE BOBBY COOPER
 PHONE NO. 313 868-2659



"REVISED"

 - REQUESTED TEMPORARY STREET CLOSURE

(FOR OFFICE USE ONLY)

PENNSYLVANIA
 DETROIT R.R.

CARTO 25 F

| | | | | | |
|------------------|---|-------------|-------------|-------------|-------------|
| B | REVISED: EXTENDING TEMPORARY STREET CLOSING TO PEAR AVE. | WLW | KSM | KSM | 10/15/15 |
| A | REVISED: CHANGE FROM CONVERSION TO EASEMENT TO TEMPORARY STREET CLOSING | WLW | KSM | KSM | 10/06/15 |
| REVISIONS | | DRWN | CHKD | APPD | DATE |
| DRAWN BY | CHECKED | | | | |
| DATE | APPROVED | | | | |
| | | | | | |

REQUESTED TEMPORARY STREET CLOSURE
 IDAHO AVE., 60 FT. WD. AND A
 PORTION OF PEAR AVE., 30 FT. WD.
 IN THE BLOCK BOUND BY
 ROSA PARKS BLVD., MIDLAND, WOODROW WILSON AVE.
 AND PENNSYLVANIA DETROIT R.R.

| | |
|------------------------------------|-------|
| CITY OF DETROIT | |
| CITY ENGINEERING DEPARTMENT | |
| SURVEY BUREAU | |
| JOB NO. | 01-01 |
| DRWG. NO. | X 252 |