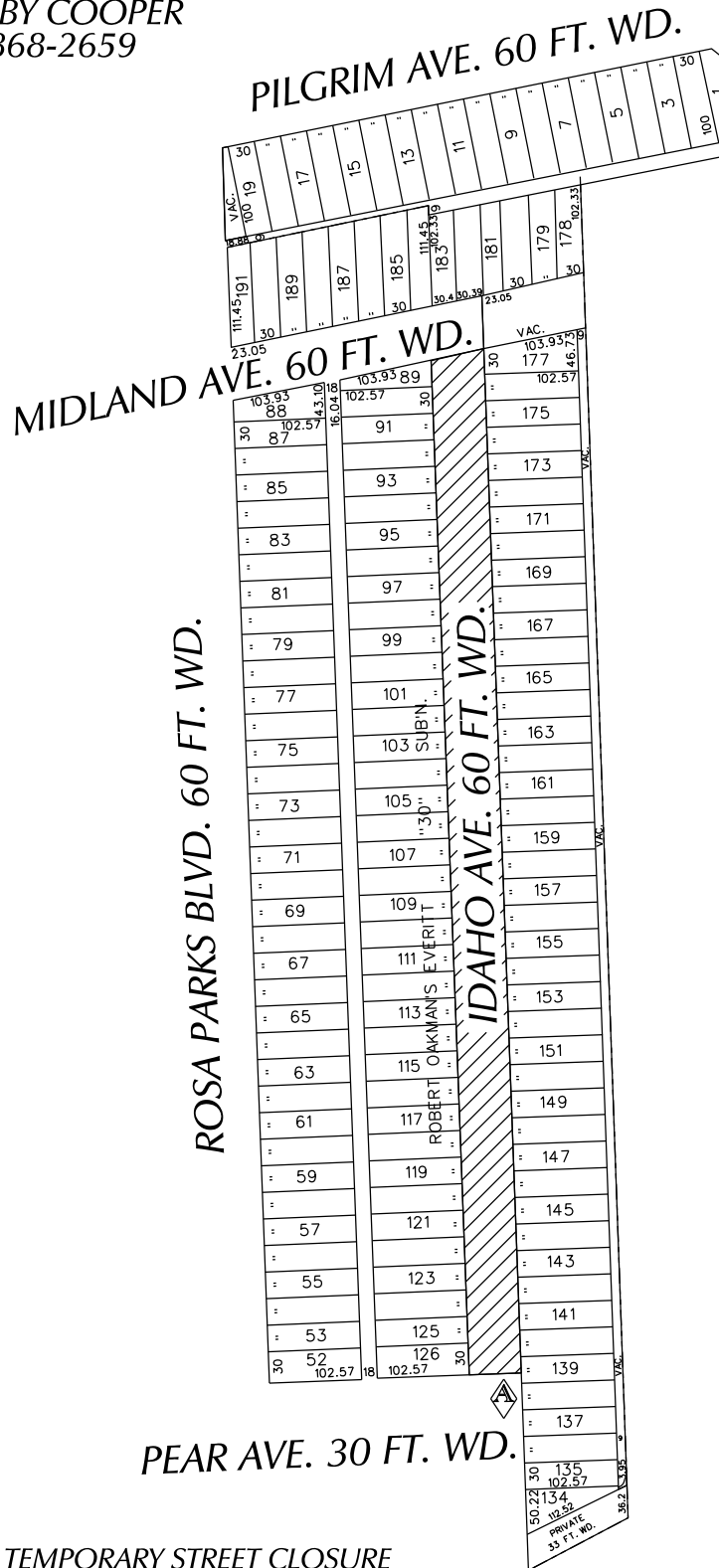


PETITION NO. 252
 TWELFTH STREET MISSIONARY BAPTIST CHURCH
 1840 MIDLAND AVE.
 DETROIT, MICHIGAN 48238
 C/O TRUSTEE BOBBY COOPER
 PHONE NO. 313 868-2659



"REVISED"

 - REQUESTED TEMPORARY STREET CLOSURE

(FOR OFFICE USE ONLY)

CARTO 25 F

B					
A	REVISED- CHANGE FROM CONVERSION TO EASEMENT TO TEMPORARY STREET CLOSING	WLW	KSM	KSM	10/06/15
DESCRIPTION		DRWN	CHKD	APPD	DATE
REVISIONS					
DRAWN BY	WLW	CHECKED			
DATE	08-21-14	APPROVED			

REQUESTED TEMPORARY STREET CLOSURE
IDAHO AVE., 60 FT. WD.
BETWEEN MIDLAND AND PEAR AVE.

CITY OF DETROIT	
CITY ENGINEERING DEPARTMENT	
SURVEY BUREAU	
JOB NO.	01-01
DRWG. NO.	X 252