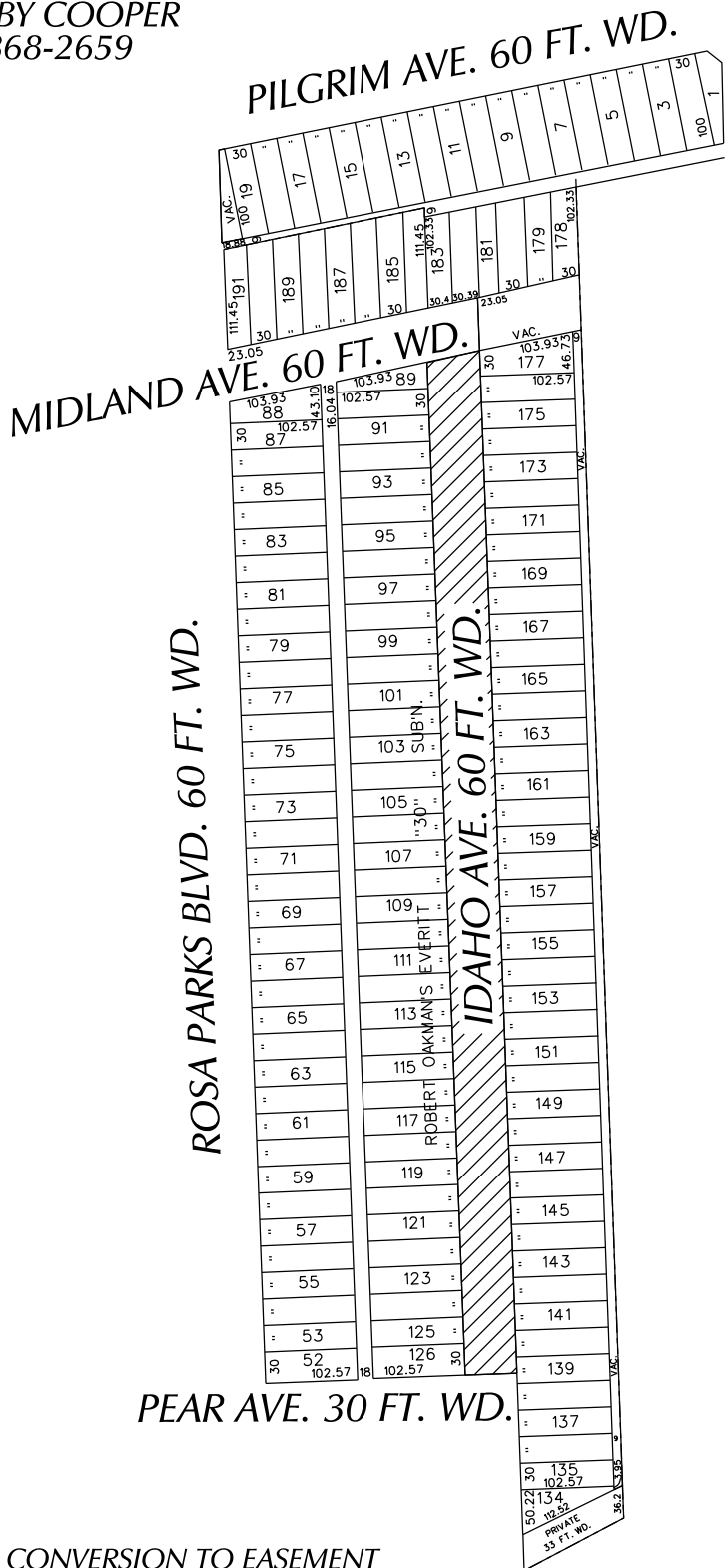


PETITION NO. 252
 TWELFTH STREET MISSIONARY BAPTIST CHURCH
 1840 MIDLAND AVE.
 DETROIT, MICHIGAN 48238
 C/O TRUSTEE BOBBY COOPER
 PHONE NO. 313 868-2659



- REQUESTED CONVERSION TO EASEMENT

(FOR OFFICE USE ONLY)

CARTO 25 F

| | | | | | |
|-------------|------|------|----------|--|--|
| B | | | | | |
| A | | | | | |
| DESCRIPTION | | | | | |
| REVISIONS | | | | | |
| DRWN | CHKD | APPD | DATE | | |
| DRAWN BY | | | CHECKED | | |
| DATE | | | APPROVED | | |
| 08-21-14 | | | | | |

REQUEST TO CONVERT TO EASEMENT
 IDAHO AVE., 60 FT. WD.
 BETWEEN MIDLAND AND PEAR AVE.

CITY OF DETROIT
 CITY ENGINEERING DEPARTMENT
 SURVEY BUREAU

JOB NO. 01-01

DRWG. NO. X 252