

PETITION NO. 195
 PROFESSIONAL ENGINEERING ASSOCIATES INC.
 2430 ROCHESTER CT. SUITE 100
 TROY, MICHIGAN 48083-1872
 C/O DOUG KENNEDY, P.E.
 PHONE NO. 248 689-9090

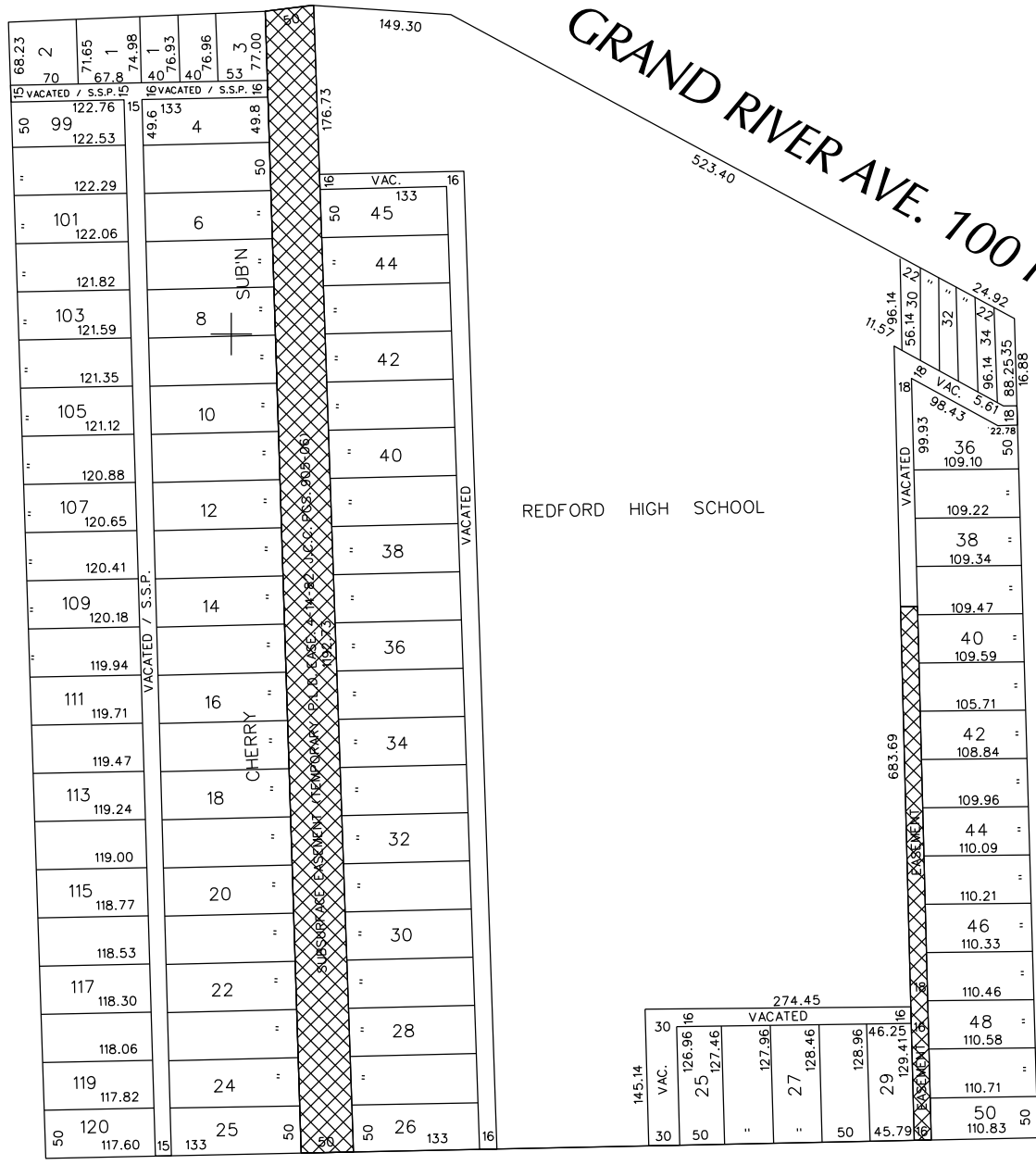


MCNICHOLS W. RD. 120 FT. WD.

GRAND RIVER AVE. 100 FT. WD.

BURGESS AVE. 50 FT. WD.

WESTBROOK AVE. 50 FT. WD.



VERNE AVE. 50 FT. WD.



- REQUESTED VACATION

(FOR OFFICE USE ONLY)

CARTO 113 C

B					
A					
DESCRIPTION	DRWN	CHKD	APPD	DATE	
REVISIONS					
DRAWN BY	CHECKED				
WLW					
DATE	APPROVED				
05-12-14					

REQUEST TO VACATE ALL RIGHT-OF-WAYS
 IN THE AREA BOUND BY
 GRAND RIVER, WESTBROOK, VERNE,
 BURGESS AVE. AND MCNICHOLS W. RD.

CITY OF DETROIT
 CITY ENGINEERING DEPARTMENT
 SURVEY BUREAU
JOB NO. 01-01
DRWG. NO. X 195