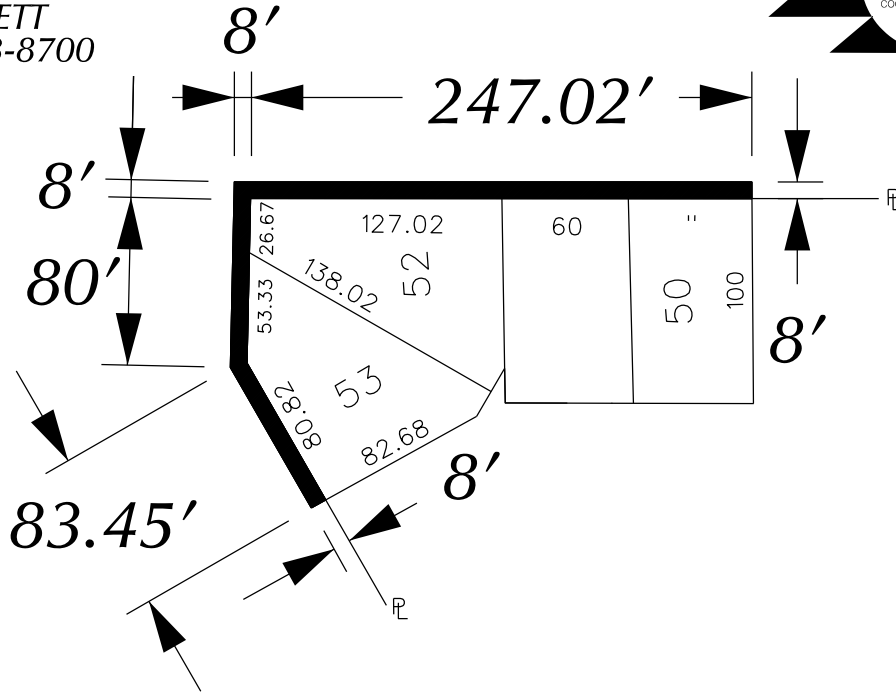
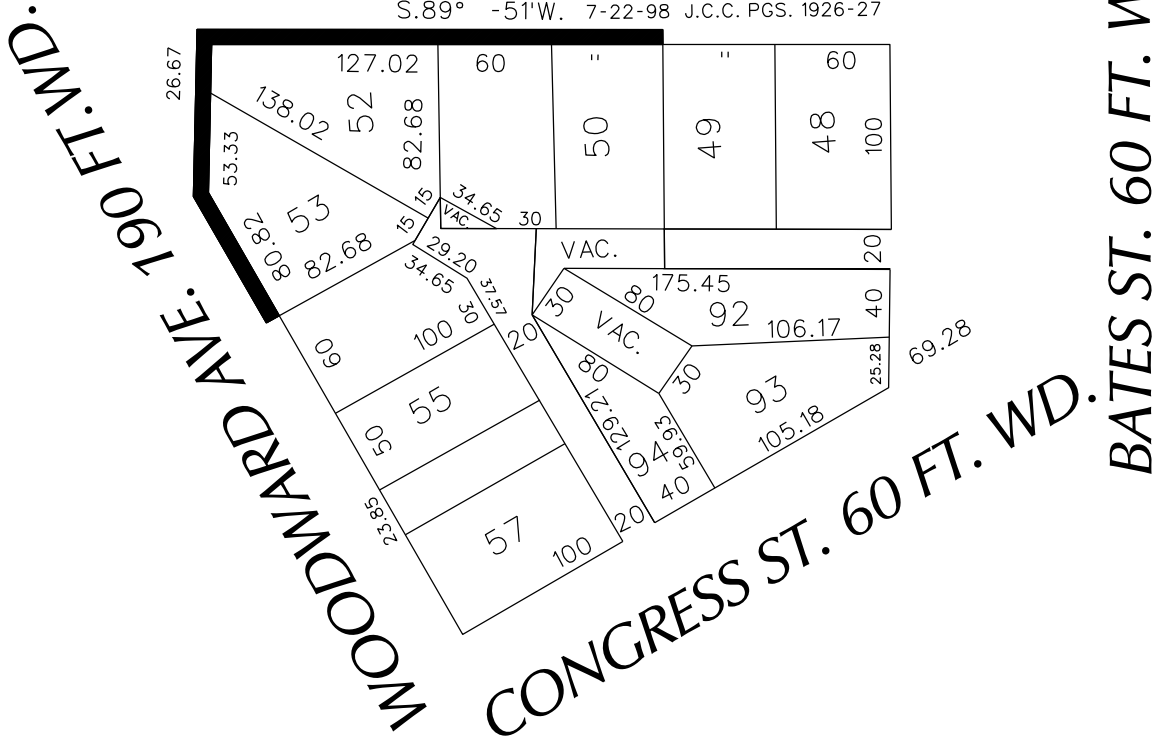


PETITION NO. 147  
 BEDROCK REAL ESTATE SERVICES  
 660 WOODWARD  
 DETROIT, MICHIGAN 48226  
 C/O VERONICA RICKETT  
 PHONE NO. 313 373-8700



**CADILLAC SQUARE 200 FT. WD.**

S.89° -51'W. 7-22-98 J.C.C. PGS. 1926-27



**■ - AREA OF ENCROACHMENT**  
 (With Outdoor Seating, Bicycle Rack, Benches and Planters, etc...)  
 (FOR OFFICE USE ONLY)

CARTO 28 F

**REQUEST TO ENCROACH INTO  
 WOODWARD AND CADILLAC SQ.  
 IN THE BLOCK BOUND BY  
 WOODWARD, CADALLIC SQ.  
 BATES AND CONGRESS ST.**

**CITY OF DETROIT  
 CITY ENGINEERING DEPARTMENT  
 SURVEY BUREAU**  
 JOB NO. 01-01  
 DRWG. NO. X 147

B					
A					
DESCRIPTION	DRWN	CHKD	APPD	DATE	
REVISIONS					
DRAWN BY	WLW	CHECKED			
DATE	05-12-14	APPROVED			