

City of Detroit  
Inter-Departmental Communication

---

**TO:** Richard Doherty, City Engineer  
City Engineering/Department of Public Works

**FROM:** Debra Singleton, Manager II  
Detroit Water and Sewerage Department

**DATE:** May 7, 2014

**RE:** Petition No. 146  
Request to Outright Vacate Certain Easements and Public Right of Ways in The  
Area of 1404-1458 Vermont In the Area Bound by Bagley, Rosa Parks, Porter,  
and Vermont

---

We have reviewed the above Petition received by this office on April 7, 2014. With regard to DWSD's interests, our comment is as follows:

- Our records indicate that there is a sewer in the alley. DWSD objects to the outright vacation. However, DWSD has no objections if the petitioner agrees to relocate the sewer in accordance with the attached Provisions for relocation at no cost to DWSD.

If you have any questions, please call me at (313) 267-8309.

Sincerely,

Debra Singleton  
Manager II  
Claims and Permits

DES/gl

Attachments

CC: Cheryl Porter, WWP  
Mohamad Farhat, CSF

City of Detroit  
**City Engineering Division, Department of Public Works**  
**Survey Bureau**

**NOTICE OF PROPOSED CHANGE IN PROPERTY**

**Date:** 04/07/2014

**Petition:** x146

- |   |   |
|---|---|
| <input type="checkbox"/> AT&T Telecommunication                         |   |
| <input type="checkbox"/> Cable Television (CATV)                        | <input checked="" type="checkbox"/> Vacation    |
| <input type="checkbox"/> Detroit Edison (DTE)                           |   |
| <input type="checkbox"/> Michigan Consolidated Gas (DTE)                | <input type="checkbox"/> Conversion to Easement |
| <input type="checkbox"/> Fire Department                                | <input type="checkbox"/> Dedication             |
| <input type="checkbox"/> Planning & Development Department              |   |
| <input type="checkbox"/> Public Lighting Dept. - Communication Division | <input type="checkbox"/> Encroachment           |
| <input type="checkbox"/> Public Lighting Dept. - Overhead Line Division |   |
| <input type="checkbox"/> Public Lighting Dept. - Underground Division   | <input type="checkbox"/> Temporary Closing      |
| <input type="checkbox"/> Police Department                              |   |
| <input type="checkbox"/> Recreation Department                          | <input type="checkbox"/> Berm Use               |
| <input type="checkbox"/> Sanitation Division, DPW                       |   |
| <input type="checkbox"/> Street Design Bureau, DPW                      |   |
| <input type="checkbox"/> Street Maintenance Division, DPW               |   |
| <input type="checkbox"/> Street and Traffic Division, DPW               |   |
| <input type="checkbox"/> Water and Sewerage Dept. - Sewer Design        |   |
| <input type="checkbox"/> Water and Sewerage Dept. - Water Design        |   |

A petition drawing is attached. Property shown on the attached print is proposed to be changed as indicated.

Kindly report (using the back of this sheet) the nature of your services (if any) affected by the proposed change and the estimated costs of removing and rerouting such services (if necessary).

Please return one copy to City Engineering Division, DPW. Retain one copy and print for you file.

Alfred Jordan, Director, Department of Public Works

By: Richard Doherty, CED DPW  
Head Engineer

**TO: City Engineering Division, DPW  
65 Cadillac Square, Suite 900  
Detroit, Michigan 48226-2873  
Survey Bureau: 313-224-3970  
Fax: 313-224-3471**

x146

The proposed change in property (referred to on the other side of this sheet) would affect our services as follows:

- Not Involved
- Involved; but asking you to hold action on this petition until further notice.
- Involved; but no objections to the property change .
- Involved; but no objections to the property change...provided as easement of the full width of the public right-of-way (street, alley or other public place) is reserved.
- Involved; the nature of our services, and the estimated costs of removing and/or rerouting such services are:

\_\_\_\_\_  
(Utility or City Department)

\_\_\_\_\_  
By

\_\_\_\_\_  
Title

\_\_\_\_\_  
Date

\_\_\_\_\_  
Area code – Telephone number

PETITION NO. 146  
 GIFFELS WEBSTER  
 28 W. ADAMS, SUITE 1200  
 DETROIT, MICHIGAN 48221  
 C/O JAMES FOSTER  
 PHONE NO. 313 962-5068

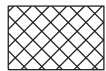
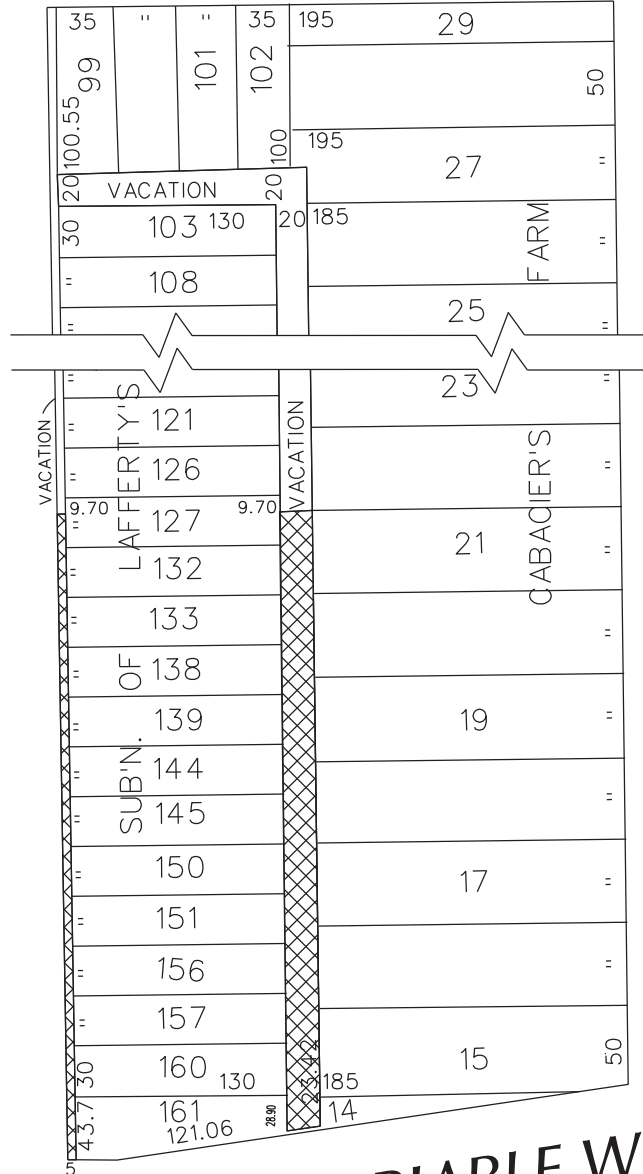


**BAGLEY AVE. 80 FT. WD.**

**VERMONT AVE. 70 FT. WD.**

**ROSA PARKS BLVD. 120 FT. WD.**

**PORTER ST. VARIABLE WIDTH**



- AREA OF OUTRIGHT VACATION

(FOR OFFICE USE ONLY)

CARTO 18 A

B					
A					
DESCRIPTION		DRWN	CHKD	APPD	DATE
REVISIONS					
DRAWN BY		CHECKED			
DATE		APPROVED			
04-02-14					

REQUEST TO VACATE CERTAIN  
 EASEMENTS AND PUBLIC RIGHT OF WAYS  
 IN THE AREA OF 1404-1458 VERMONT ST.  
 IN THE BLOCK BOUND BY  
 BAGLEY AVE., ROSA PARKS BLVD., PORTER ST.  
 AND VERMONT AVE.

CITY OF DETROIT CITY ENGINEERING DEPARTMENT SURVEY BUREAU	
JOB NO.	01-01
DRWG. NO.	X 146

**Detroit Water & Sewerage Department  
Requirements and Provisions for Petition No. 146**

---

Provided that the petitioner (Petition No.146) shall design and construct proposed lateral sewer and make the connections to the existing public sewers as required by the Detroit Water and Sewerage Department (DWSD) prior to construction of the proposed sewers

Provided, that the plans for the lateral sewers shall be prepared by a registered engineer; and further

Provided, that DWSD be and is hereby authorized to review the drawings for the proposed lateral sewers and to issue permits for the construction of the lateral sewers, and further

Provided, that the entire work is to be performed in accordance with plans and specifications approved by DWSD and constructed under the inspection and approval of DWSD; and further

Provided that the entire cost of the proposed lateral sewer construction, including inspection, survey and engineering shall be borne by the petitioner; and further

Provided, that the petitioner shall deposit with DWSD, in advance of engineering, inspection and survey, such amounts as the department deems necessary to cover the costs of these services; and further

Provided, that the petitioner shall grant to the City a satisfactory easement for the lateral sewers; and further

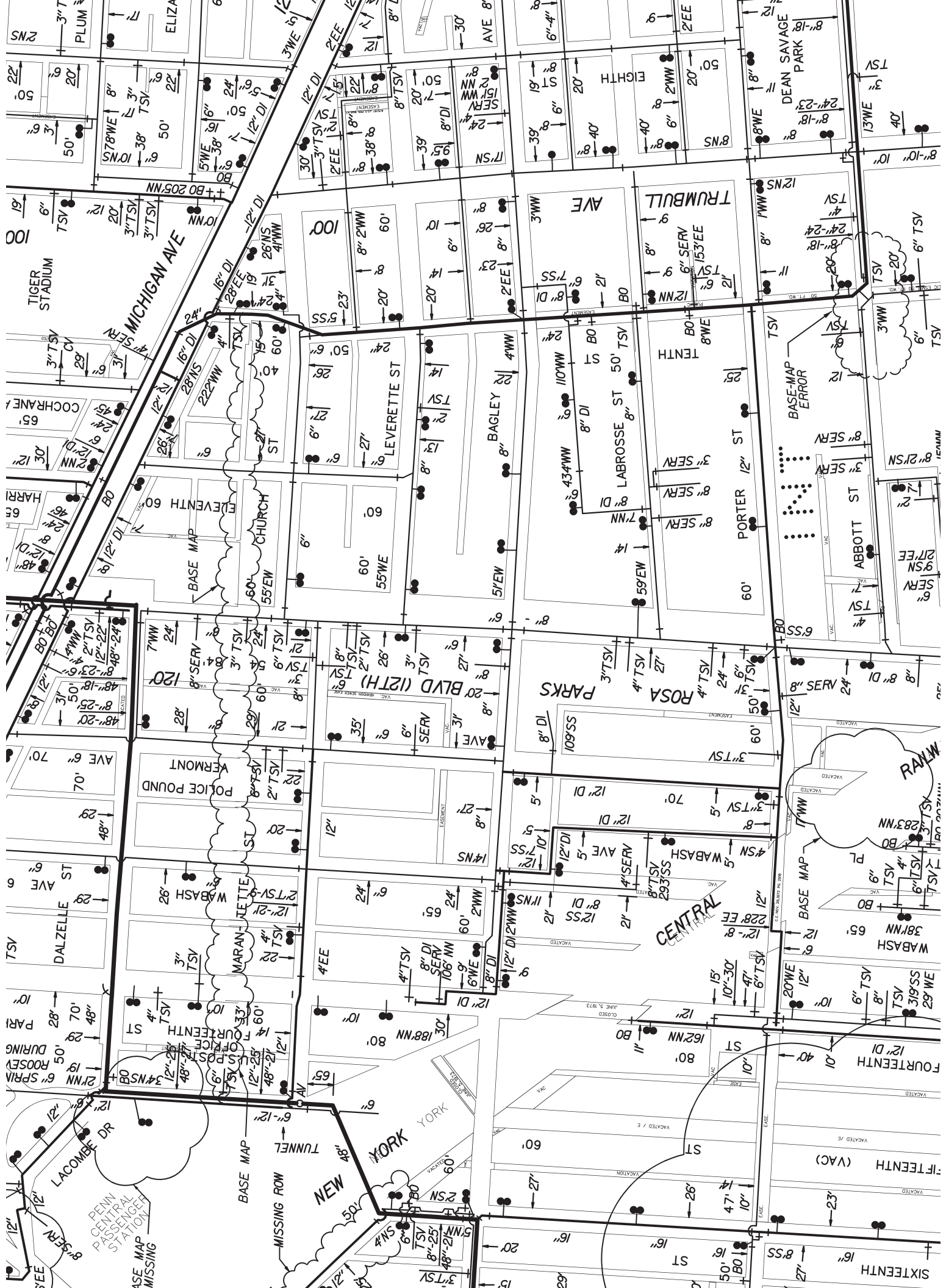
Provided, that the Board of Water Commissioners shall accept and execute the easement grant on behalf of the City; and further

Provided that the petitioner shall provide DWSD with as –built drawings on the proposed lateral sewers and; and further

Provided that the petitioner shall provide a one (1) year warranty for the proposed lateral sewer; and further

Provided that upon satisfactory completion the lateral sewers shall become city property, and part of the City system. And any existing sewers that were abandoned shall belong to the petitioner and will no longer be the responsibility of the City.





PLUM

ELIZA

3" TSV

50'

10' NS

12' DI

12' DI

12' DI

12' DI

12' DI

12' DI

12' DI

12' DI

12' DI

12' DI

12' DI

12' DI

12' DI

12' DI

12' DI

12' DI

12' DI

12' DI

12' DI

12' DI

3" TSV

50'

10' NS

12' DI

12' DI

12' DI

12' DI

12' DI

12' DI

12' DI

12' DI

12' DI

12' DI

12' DI

12' DI

12' DI

12' DI

12' DI

12' DI

12' DI

12' DI

12' DI

12' DI

12' DI

12' DI

3" TSV

50'

10' NS

12' DI

12' DI

12' DI

12' DI

12' DI

12' DI

12' DI

12' DI

12' DI

12' DI

12' DI

12' DI

12' DI

12' DI

12' DI

12' DI

12' DI

12' DI

12' DI

12' DI

12' DI

12' DI

3" TSV

50'

10' NS

12' DI

12' DI

12' DI

12' DI

12' DI

12' DI

12' DI

12' DI

12' DI

12' DI

12' DI

12' DI

12' DI

12' DI

12' DI

12' DI

12' DI

12' DI

12' DI

12' DI

12' DI

12' DI

3" TSV

50'

10' NS

12' DI

12' DI

12' DI

12' DI

12' DI

12' DI

12' DI

12' DI

12' DI

12' DI

12' DI

12' DI

12' DI

12' DI

12' DI

12' DI

12' DI

12' DI

12' DI

12' DI

12' DI

12' DI

3" TSV

50'

10' NS

12' DI

12' DI

12' DI

12' DI

12' DI

12' DI

12' DI

12' DI

12' DI

12' DI

12' DI

12' DI

12' DI

12' DI

12' DI

12' DI

12' DI

12' DI

12' DI

12' DI

12' DI

12' DI

3" TSV

50'

10' NS

12' DI

12' DI

12' DI

12' DI

12' DI

12' DI

12' DI

12' DI

12' DI

12' DI

12' DI

12' DI

12' DI

12' DI

12' DI

12' DI

12' DI

12' DI

12' DI

12' DI

12' DI

12' DI

3" TSV

50'

10' NS

12' DI

12' DI

12' DI

12' DI

12' DI

12' DI

12' DI

12' DI

12' DI

12' DI

12' DI

12' DI

12' DI

12' DI

12' DI

12' DI

12' DI

12' DI

12' DI

12' DI

12' DI

12' DI

3" TSV

50'

10' NS

12' DI

12' DI

12' DI

12' DI

12' DI

12' DI

12' DI

12' DI

12' DI

12' DI

12' DI

12' DI

12' DI

12' DI

12' DI

12' DI

12' DI

12' DI

12' DI

12' DI

12' DI

12' DI

3" TSV

50'

10' NS

12' DI

12' DI

12' DI

12' DI

12' DI

12' DI

12' DI

12' DI

12' DI

12' DI

12' DI

12' DI

12' DI

12' DI

12' DI

12' DI

12' DI

12' DI

12' DI

12' DI

12' DI

12' DI

3" TSV

50'

10' NS

12' DI

12' DI

12' DI

12' DI

12' DI

12' DI

12' DI

12' DI

12' DI

12' DI

12' DI

12' DI

12' DI

12' DI

12' DI

12' DI

12' DI

12' DI

12' DI

12' DI

12' DI

12' DI

3" TSV

50'

10' NS

12' DI

12' DI

12' DI

12' DI

12' DI

12' DI

12' DI

12' DI

12' DI

12' DI

12' DI

12' DI

12' DI

12' DI

12' DI

12' DI

12' DI

12' DI

12' DI

12' DI

12' DI

12' DI

3" TSV

50'

10' NS

12' DI

12' DI

12' DI

12' DI

12' DI

12' DI

12' DI

12' DI

12' DI

12' DI

12' DI

12' DI

12' DI

12' DI

12' DI

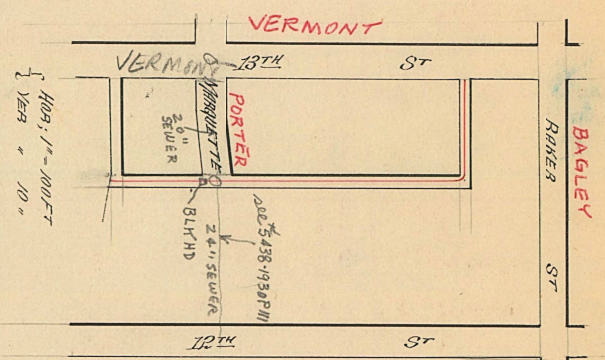
12' DI

12' DI

12' DI

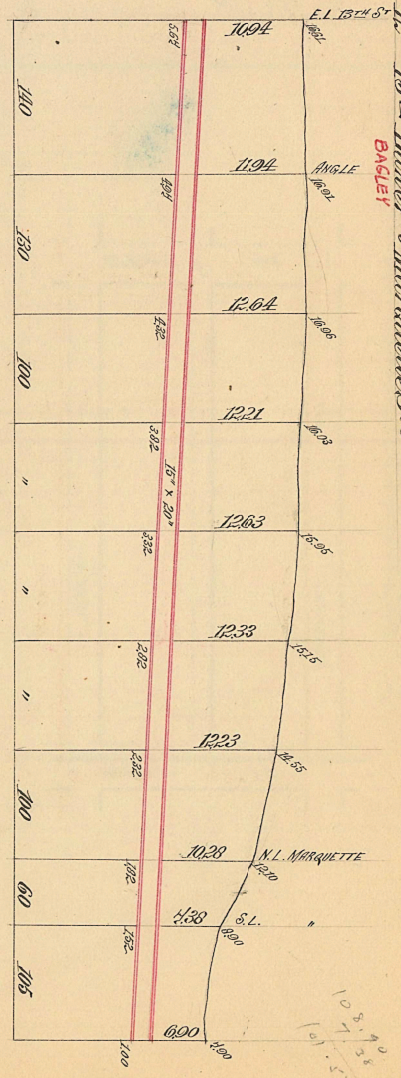
12

DP  
Nov 20



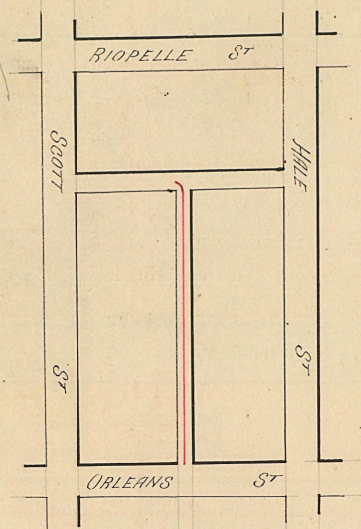
400' 1" - 100' FT  
10' 0" VER

*Interval Sewer in Alley*  
Bet 12th 13th Baker & Marquette St's

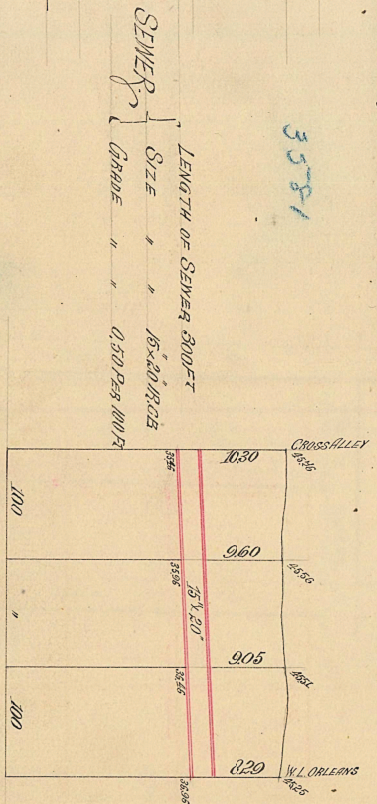


SEWER  
Length of sewer 855 ft  
Slope 15' x 20" 1/8003  
Grade " " 0.27' per 100 ft

DP  
Nov 21



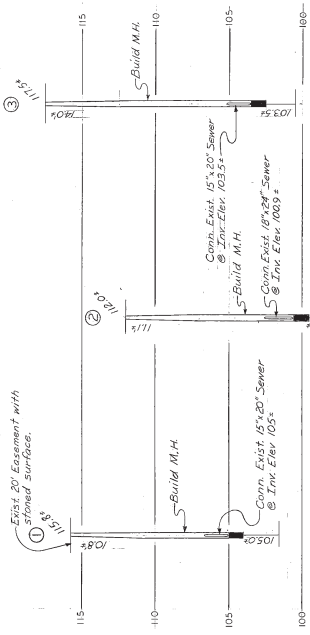
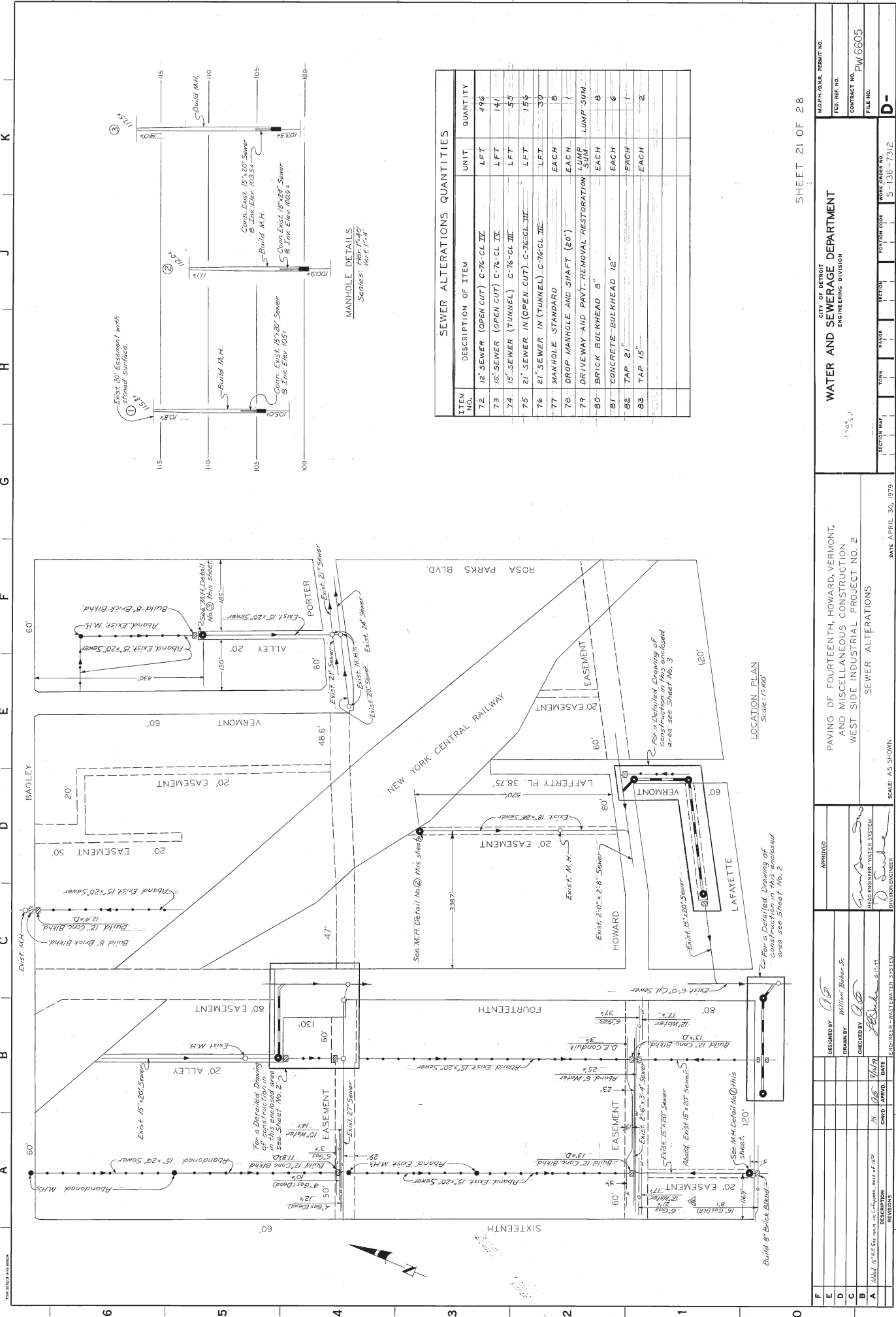
*Interval Sewer in Alley*  
Bet Hale Scott Riopelle & Orleans St



SEWER  
LENGTH OF SEWER 300 FT  
SIZE " " 15" x 20" 1/8003  
GRADE " " 0.50' PER 100 FT

6650





ITEM NO.	DESCRIPTION OF ITEM	UNIT	QUANTITY
72	12" SEWER (OPEN CUT) C-76-CL III	LFT	496
73	15" SEWER (OPEN CUT) C-76-CL III	LFT	141
74	15" SEWER (TUNNEL) C-76-CL III	LFT	55
75	21" SEWER IN (OPEN CUT) C-76-CL III	LFT	156
76	21" SEWER IN (TUNNEL) C-76-CL III	LFT	30
77	MANHOLE STANDARD	EACH	5
78	DROP MANHOLE AND SHAFT (60')	EACH	1
79	DRIVEWAY AND PAVT. REMOVAL RESTORATION	SUMP	1
80	BRICK BULKHEAD 6"	EACH	6
81	CONCRETE BULKHEAD 12"	EACH	1
82	TAP 21"	EACH	1
83	TAP 15"	EACH	2
	<b>LUMP SUM</b>		

CITY OF BERRINGTON  
WATER AND SEWERAGE DEPARTMENT  
ENGINEERING DIVISION

PAVING OF FOURTEENTH, HOWARD, VERMONT,  
AND MISCELLANEOUS CONSTRUCTION  
WEST SIDE INDUSTRIAL PROJECT NO. 2  
SEWER ALTERATIONS

DATE: APRIL 30, 1979  
SCALE: A3 SHOWN

SHEET 21 OF 28

PROJECT NO. 5-136-7312  
DRAWING NO. D-1

DESIGNED BY: <i>William Baker Jr.</i>	APPROVED:
DRAWN BY: <i>William Baker Jr.</i>	
CHECKED BY: <i>[Signature]</i>	
DATE: 6-11-79	
ENGINEER: WASTEWATER SYSTEM	

REVISIONS:

NO.	DATE	DESCRIPTION
1	6-11-79	As Shown

FOR A DETAILED DRAWING OF CONSTRUCTION IN THIS ENCLOSED AREA SEE SHEET NO. 2