


TO: City Engineering Division, DPW  
900 Cadillac Tower Building  
65 Cadillac Square  
Detroit, Michigan 48226-2873  
Survey Bureau: 313-224-3970  
Fax: 313-224-3471

Ref. No. 201406121  
Petition No. 3009

- ( ) Involved; but asking you to hold action on this petition until further notice.
- ( ) Involved; but no objections to the property change – provided an easement of the full width of the public right-of-way (street, alley or other public place) is reserved.
- ( ) Involved; the nature of our services, and the estimated costs of removing and/or rerouting such services are:
- (x) Involved; have no objection to the request to encroach into portions of W. Grand Blvd and Second Ave. to install and maintain a sub-surface “ice-melt system” in sidewalk space adjacent to 3044 W. Grand Blvd (Cadillac Place) as shown on drawing no. x3009.dgn .

Traffic Engineering Division - DPW  
(Utility or City Department)

for Ashok Patel   
By

Head Transportation Engineer  
Title

August 4, 2014  
Date

313-224-1610  
Area code-Telephone number

MA/ma

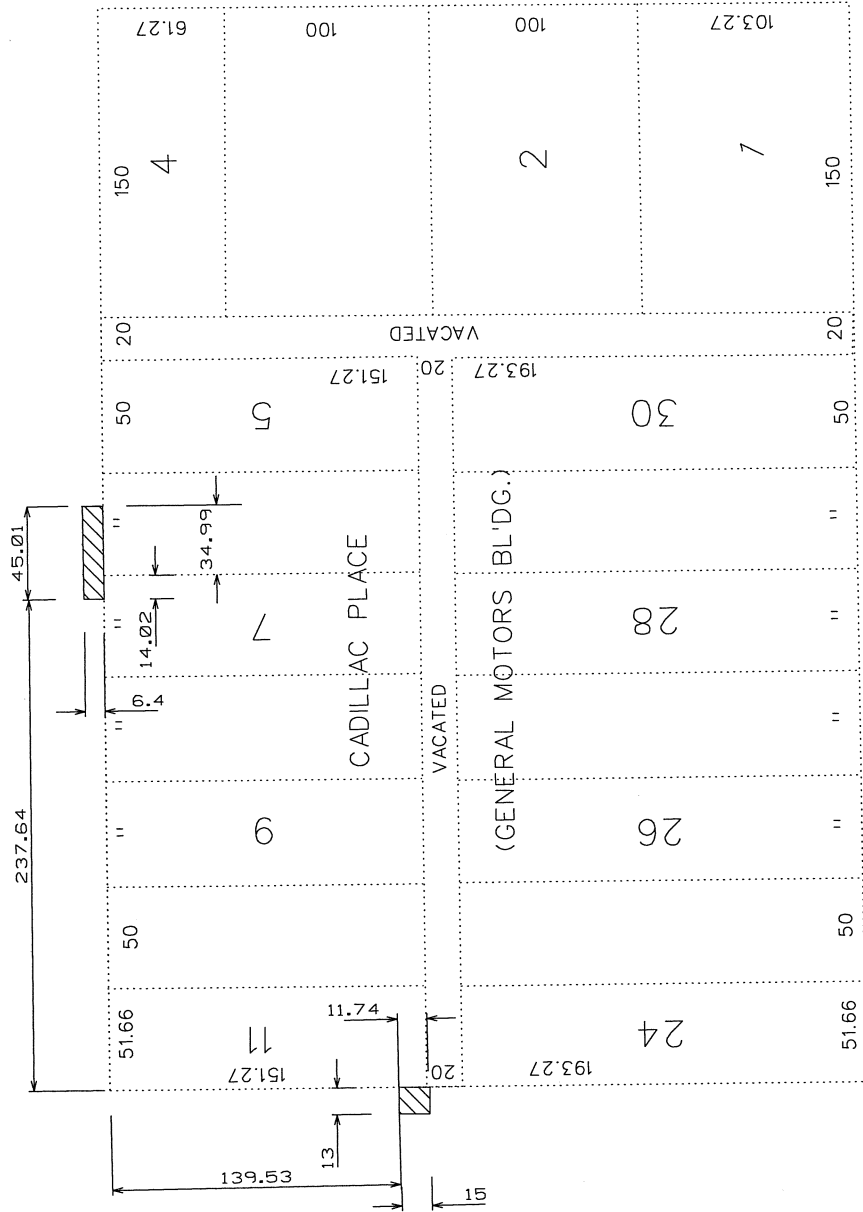
PETITION NO. 3009  
 STATE OF MICHIGAN  
 DEPARTMENT OF TECHNOLOGY, MANAGEMENT AND BUDGET  
 3044 W. GRAND BLVD, DET., MI. 48202  
 ATT: GIFFELS WEBSTER  
 MICHAEL DARGA  
 313.962.4442

WEST GRAND BLVD. 150 FT. WD.



SECOND AVE. 80 FT. WD.

CASS AVE. 80 FT. WD.



REQUESTED ENCROACHMENT(S)

MILWAUKEE AVE. 80 FT. WD.

CARTO. 31-E

(FOR OFFICE USE ONLY)

NO.	DESCRIPTION	DRAWN	CHECKED	APP'D	DATE
A					
REVISIONS					
DRAWN BY		CHECKED		APPROVED	
DATE		DATE		DATE	

THE STATE OF MICHIGAN REQUEST TO ENCROACH INTO PORTIONS OF W. GRAND BLVD AND SECOND AVE. TO INSTALL AND MAINTAIN A SUB-SURFACE "ICE MELT SYSTEM" IN SIDEWALK SPACE ADJACENT TO 3044 W. GRAND BLVD. (CADILLAC PLACE)

CITY OF DETROIT	
CITY ENGINEERING DEPARTMENT	
SURVEY BUREAU	
JOB NO.	01-01
DRWG. NO.	X3009.DGN