

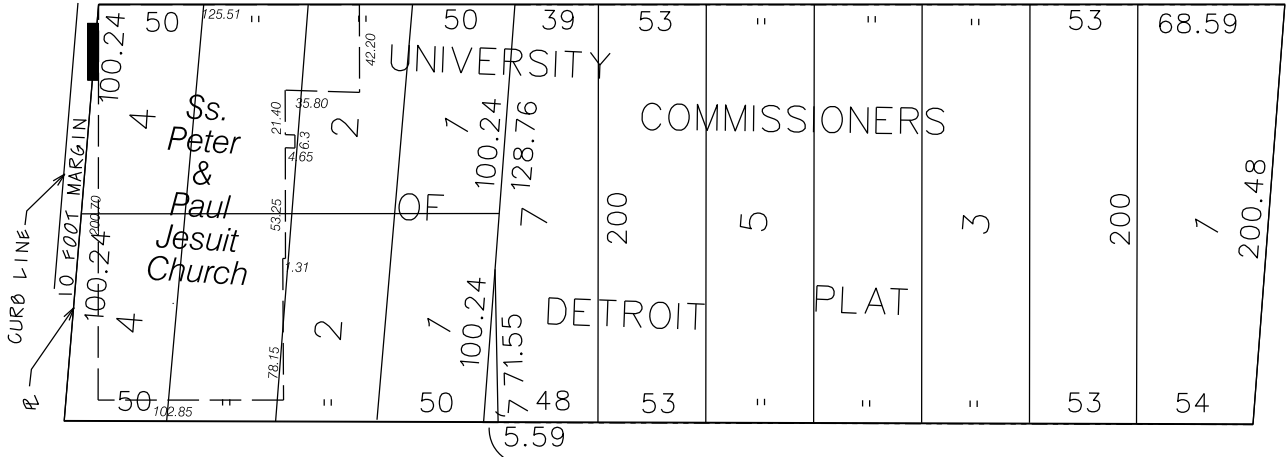
PETITION NO. 2991
 Ss. PETER AND PAUL JESUIT CHURCH AND WARMING CENTER
 438 SAINT ANTOINE STREET
 DETROIT, MICHIGAN 48226
 PHONE NO 313 961 8077



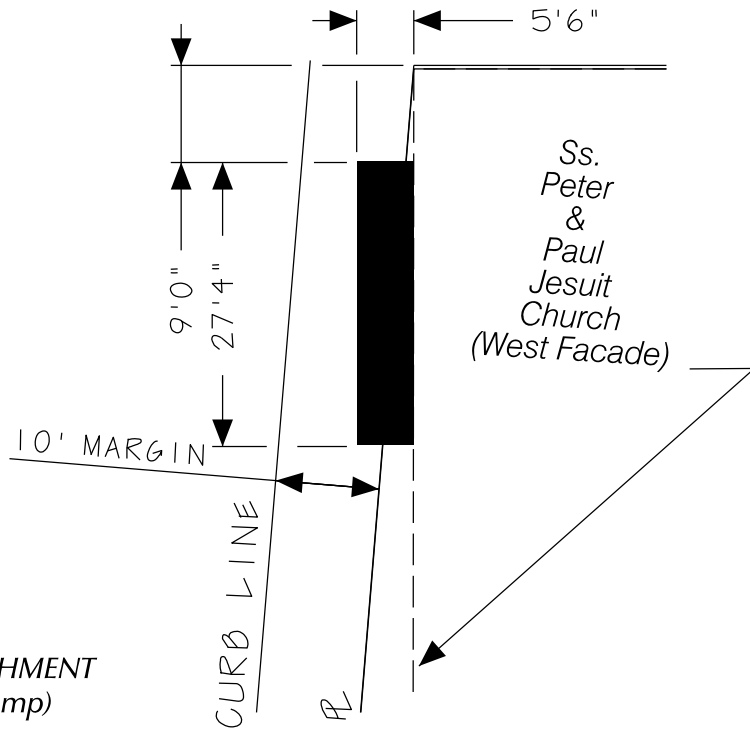
ST. ANTOINE ST. 50 FT. WD.

LARNED ST. 60 FT. WD.

WALTER P. CHRSLEER EXPRESSWAY



EAST JEFFERSON AVE. 210 FT. WIDENING



- AREA OF ENCROACHMENT
 (With Stair and Ramp)

(FOR OFFICE USE ONLY)

CARTO 28 F

| B | | | | | |
|-------------|----------|----------|------|------|--|
| A | | | | | |
| DESCRIPTION | DRWN | CHKD | APPD | DATE | |
| REVISIONS | | | | | |
| DRAWN BY | KSM | CHECKED | | | |
| DATE | 12-13-13 | APPROVED | | | |

REQUEST FOR ENCROACHMENT
 INTO ST. ANTOINE ST.
 50 FEET WIDE
 (With Stair and Ramp)

| | |
|---|--------|
| CITY OF DETROIT CITY ENGINEERING DEPARTMENT SURVEY BUREAU | |
| JOB NO. | 01-01 |
| DRWG. NO. | X 2991 |