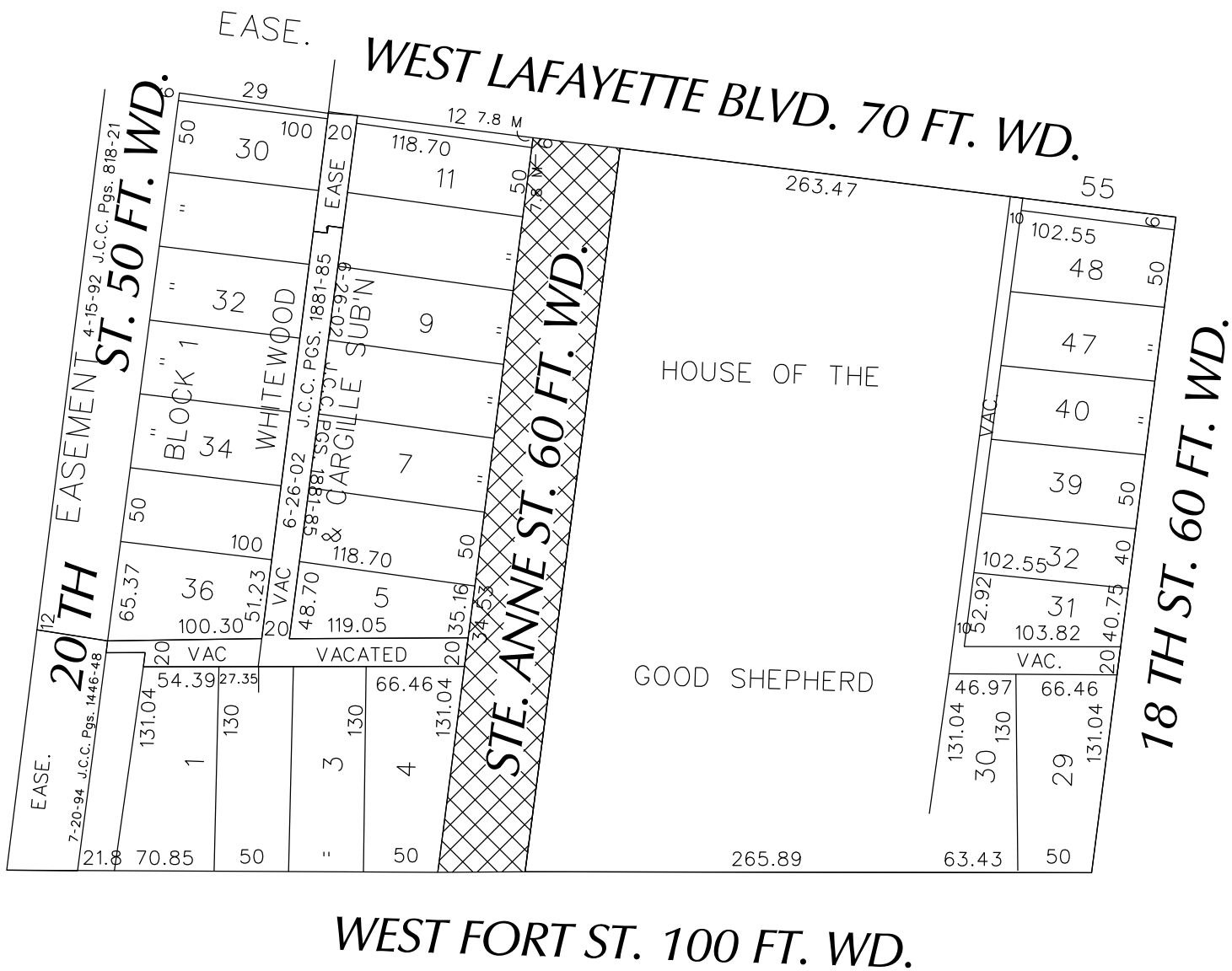


PETITION NO. 2900  
 DETROIT INTERNATIONAL BRIDGE COMPANY  
 P.O. BOX 32666  
 DETROIT, MICHIGAN 48232  
 PHONE NO. 586 939 7000 EXT. 2767



 - AREA OF EASEMENT

(FOR OFFICE USE ONLY)

CARTO 18 E

<b>B</b>					
<b>A</b>					
<b>DESCRIPTION</b>	<b>DRWN</b>	<b>CHKD</b>	<b>APPD</b>	<b>DATE</b>	
<b>REVISIONS</b>					
<b>DRAWN BY</b>	<b>KSM</b>		<b>CHECKED</b>		
<b>DATE</b>	<b>12-5-13</b>		<b>APPROVED</b>		

REQUEST CONVERSION TO EASEMENT  
 STE. ANNE ST. 60 FT. WD.  
 BETWEEN FORT  
 AND LAFAYETTE

<b>CITY OF DETROIT</b>	
CITY ENGINEERING DEPARTMENT	
SURVEY BUREAU	
<b>JOB NO.</b>	<b>01-01</b>
<b>DRWG. NO.</b>	<b>X2900</b>