

PETITION NO. 2873
 GIFFELS WEBSTER
 28 W. ADAMS, SUITE 1200
 DETROIT, MICHIGAN 48226
 C/O JAMES FOSTER
 PHONE NO. 313 962 4442

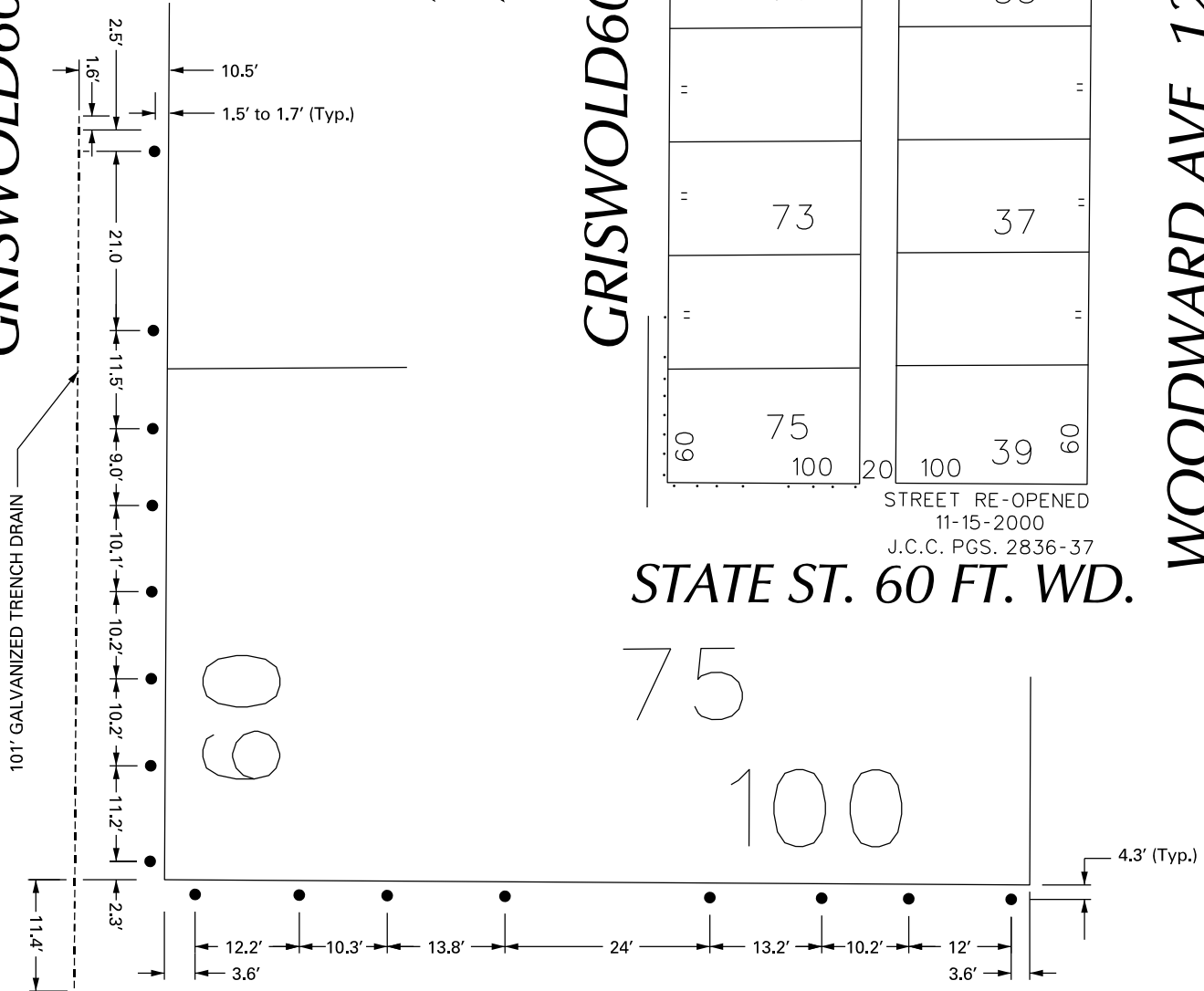
GD. RIVER 60 FT. WD.

GRISWOLD 60 FT. WD.



GRISWOLD 60 FT. WD.

WOODWARD AVE. 120 FT. WD.



60	100	20	100	33	60
"	69			"	"
"	71			35	"
"	"			"	"
"	73			37	"
"	"			"	"
60	75	20	100	39	60

STREET RE-OPENED
 11-15-2000
 J.C.C. PGS. 2836-37

STATE ST. 60 FT. WD.

STATE ST. 60 FT. WD.

- TRENCH DRAIN
- UP-LIGHTS

(FOR OFFICE USE ONLY)

CARTO 28 B

B					
A					
DESCRIPTION	DRWN	CHKD	APPD	DATE	
REVISIONS					
DRAWN BY	KSM		CHECKED		
DATE	9-5-13		APPROVED		

**REQUEST ENCROACHMENT
 INTO GRISWOLD AND STATE STREETS
 WITH UP-LIGHTING
 AND TRENCH DRAIN SYSTEM**

CITY OF DETROIT CITY ENGINEERING DEPARTMENT SURVEY BUREAU	
JOB NO.	01-01
DRWG. NO.	X2873