



City of Detroit  
Inter-Departmental Communication

---

**TO:** Richard Doherty, City Engineer  
City Engineering/Department of Public Works

**FROM:** Debra Singleton, Manager II  
Detroit Water and Sewerage Department

**DATE:** August 12, 2013

**RE:** Petition No. 2873  
Requested Encroachment into Griswold and State Street  
with Trench Drainage System and Pavement Lighting at 1212 Griswold

---

We have reviewed the above Petition received by this office on June 14 2013 from Giffels Webster. With regard to DWSD's interests, our comment is as follows:

- Our records indicate that there are water mains and sewers in Griswold and State Streets. DWSD has no objection to the requested encroachment provided that the attached Provisions for Encroachment were strictly followed.

If you have any questions, please call me at (313) 267-8309.

Sincerely,

A handwritten signature in black ink, appearing to read "D. Singleton", with a long, sweeping underline.

Debra Singleton  
Manager II  
Claims and Permits

DES/GL./gl

Attachments

CC: Mohamad Farhat, CSF  
Cheryl Porter WWP

## FAX TRANSMITTAL

### Office of the City Clerk

Coleman A Young Municipal Center

Two Woodward Avenue, Suite 200

Detroit, Michigan 48226

Telephone: (313) 224-2070 Fax: (313) 224-2075

*Wednesday, June 26, 2013*

*No. of Pages 11*

**FROM:** *Mr. Andre Gilbert II, Junior Assistant City Council Committee Clerk*

**SUBJECT:** *Petition #2873, Giffels Webster, request permission to encroach into 1212 Griswold and State Street with the installation of a "Trench Drain System" and "Up-lighting" at 1212 Griswold.*

#### FAX TO THE FOLLOWING DEPARTMENT(S):

Sue McCormick, Director

Water & Sewerage Department

(313) 224-6067

Mr. Richard Doherty, City Engineer

DPW - City Engineering Division

(313) 224-1464

DOCUMENT MANAGEMENT  
07900 13 06 26PM 02:54

Attachment

---

**City of Detroit**  
OFFICE OF THE CITY CLERK

Janice M. Winfrey  
City Clerk

Vivian A. Hudson  
Deputy City Clerk

**DEPARTMENTAL REFERENCE COMMUNICATION**

*Wednesday, June 26, 2013*

*To: The Department or Commission Listed Below*

*From: Janice M. Winfrey, Detroit City Clerk*

---

The following petition is herewith referred to you for report and recommendation to the City Council.

In accordance with that body's directive, kindly return the same with your report in duplicate within four (4) weeks.

---

DPW - CITY ENGINEERING DIVISION    WATER & SEWERAGE DEPARTMENT

**2873**    *Giffels Webster, request permission to encroach into 1212 Griswold and State Street with the installation of a "Trench Drain System" and "Up-lighting" at 1212 Griswold.*



#2873

June 14, 2013

**HAND DELIVER**

Honorable Detroit City Council  
C/o Detroit City Clerk  
200 Coleman A. Young Municipal Center  
2 Woodward Avenue  
Detroit, Michigan 48226

RE: Giffels Webster, request to encroach into Griswold Street and State Street with the installation of a "Trench Drain System" and "Up-lighting" at 1212 Griswold.

Giffels Webster, 28 W. Adams, Suite 1200, Detroit, Michigan 48226 on behalf of 1212 Griswold Street LLC, 401 S Washington Sq., Suite 102, Lansing, Michigan 48933, respectfully request to encroach into the easterly right-of-way of Griswold Street, 60 feet wide, and the northerly right-of-way of State Street, 60 feet wide, in order to install and maintain a "Trench Drain System" and "Up-lighting" adjacent to 1212 Griswold Street.

The proposed "Trench Drain System" will be approximately 101.00 feet in length running parallel to the property line; 10.5 feet into the easterly Griswold St., right-of-way. The System is a poly and galvanized drain, that will tie into the existing storm structures, below grade, with ADA approved stainless steel grating at grade. Additionally, we propose installing a total of sixteen (16) – 8" Diameter; Drive-over in-ground heavy gauge stainless steel floodlights. Eight (8) will be installed no more than 1.7 feet at center into the Griswold St., right-of-way, while still providing 20 – 30 feet of clear pedestrian passage. Eight (8) will also be installed approximately 4.4 feet at center into the northerly right-of-way of State St., also, maintaining 10 – 12 feet of clear pedestrian passage. The flood lights consists of a pressed glass, faceted reflector, sealed in place, at grade, designed to bear pressure loads up to 4400lbs. Drawings of the proposed location are attached and detailed drawings will be delivered to the City Engineering Division of DPW to be used for their investigation.

If you should have any questions, please do not hesitate to contact me at (P) 313.962.4442 (M) 313.303.7677 (F) 313.962.5068.

Respectfully,

A handwritten signature in black ink, appearing to read "James Foster".

James Foster, Project Manager  
Giffels Webster

Cc: 1212 Griswold Street LLC  
Kraemer Design Group





**Drive-over in-ground floodlights - STAINLESS STEEL**  
for installation in pre-cored holes

**Enclosure:** Heavy gauge stainless steel. Provided with two external clamps that secure the luminaire in a pre-cored hole prepared by the customer.

**Trim Ring:** Heavy gauge, machined stainless steel secured to the inner housing with captive, stainless steel fasteners. Trim is sealed in place using molded, one piece high temperature silicone gasket. Glass is tempered, 1/2" thick machined flush to trim ring.

**Electrical:** 12W LED luminaire, 17 total system watts. Integral 120V only electronic LED driver, dimming not available. Standard LED color temperature is 5000K. Available in 3000K and 4000K; add suffix K3 or K4 respectively to order. Inner housing pre-wired with nine (9) feet of 18/3 water stopper cable, cable clamp, and waterproof cable gland entry into housing. A separate weatherproof single gang wiring box for power supply must be provided (by contractor).

**Note:** Due to the dynamic nature of LED technology, LED luminaire data on this sheet is subject to change at the discretion of BEGA-US. For the most current technical data, please refer to [www.bega-us.com](http://www.bega-us.com).

**Adjustable optical assembly:** Consists of a pressed glass, faceted reflector with dichroic coating to conduct infrared heat rearward, while reflecting visible light forward. Assembly includes temperature reducing infrared lens which must be kept in place when adding lens options. Color filters, spread lenses and a concentric ring louver may be added as available options. Precise aiming of the lamp is achieved by adjusting reflector assembly 180° horizontal and up to 30° vertical in 5° increments and locking in place with integral set screw.

**Finish:** Machined #4 brushed stainless steel. Custom colors are not available.

UL listed, suitable for wet locations. Protection class: IP67.

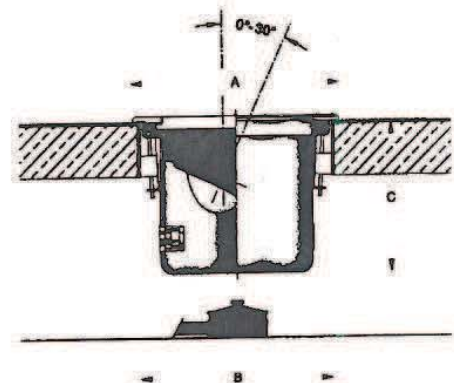
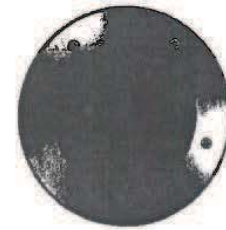
**Temperature caution:** The column "T" in this chart indicates the temperature in degrees Celsius which is reached on the center of the glass surface during operation. Surface temperatures are for exterior applications, for interior applications add 10° C. to temperatures shown.

**Note:** These luminaires are designed to bear pressure loads up to 4400 lbs. from vehicles with pneumatic tires. The luminaires must not be used for traffic lanes where they are subject to horizontal pressure from vehicles braking, accelerating and changing direction.

**Weight:** 7.1 lbs.

**Luminaire Lumens:** 659  
Tested in accordance with LM-79-08

Type:  
BEGA Product:  
Project:  
Voltage:  
Color:  
Options:  
Modified:

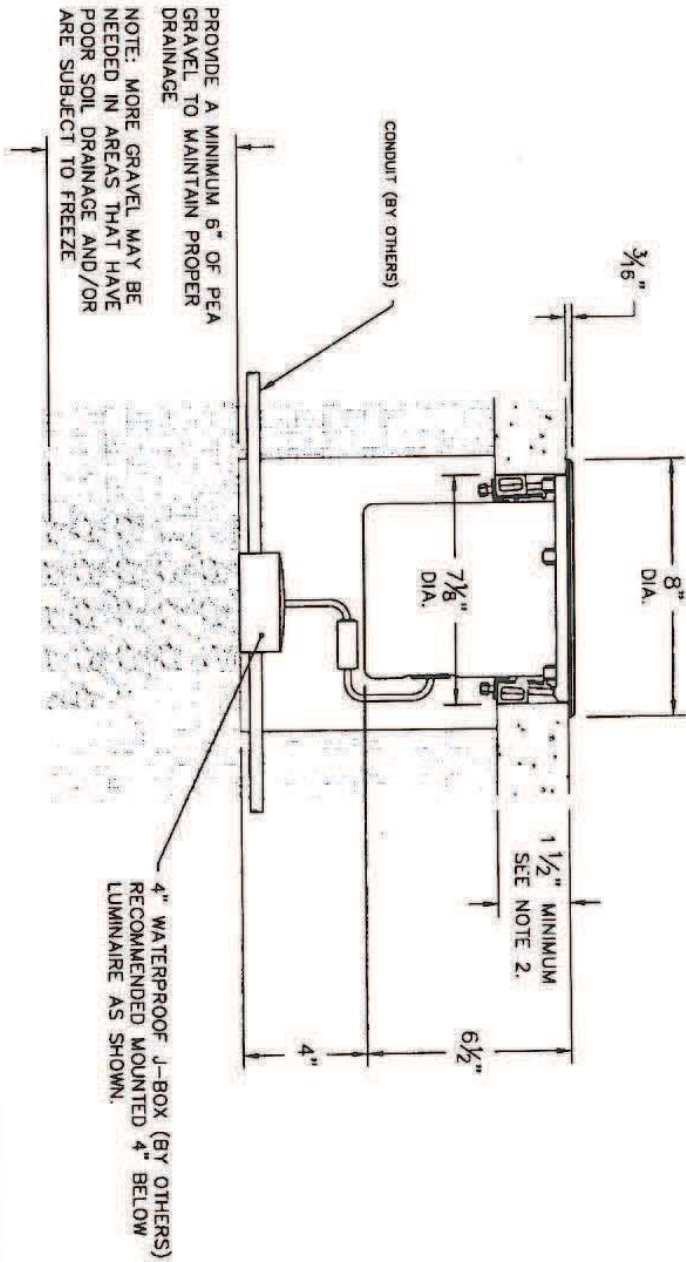
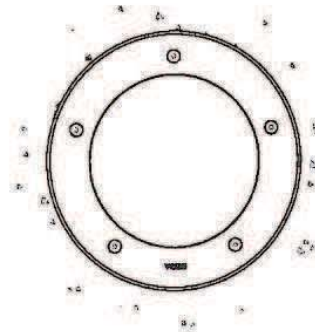


Adjustable floodlights - clear safety glass

Lamp	T	A	B	C
8828 LED 12W LED	23°	40°	8	7 1/4 7 1/2

NOTES:

- 1. LUMINAIRE #8828LED - SEE SPECIFICATIONS:



This print contains confidential information which is the property of BEGA/US. By accepting this information, the borrower agrees that it will not be used for any other purpose other than that which it was loaned.

Catalog No.: 8828LED  
 Description: Drive-over In-grade Luminaire - for pre-cored holes  
 Drawn by: Bob Mc Date: 4/16/12 File Name: 8828LED  
 SCALE: NONE - DO NOT SCALE DRAWING

**BEGA**  
 1000 Bega Way  
 Carpinteria, Ca. 93013  
 (805) 684-0533



ACO DRAIN

May 09

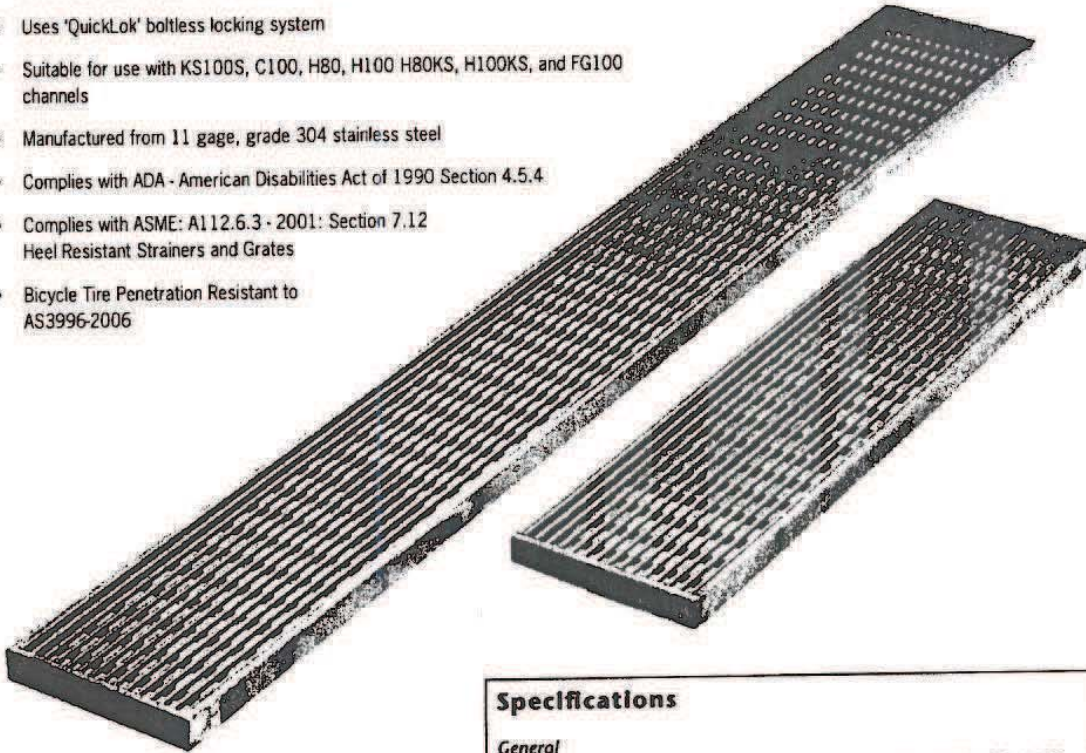
## ADA Stainless



## Type 445/446 ADA stainless steel

## Product Features

- Certified to DIN 19580 Load Class A - 3,500 lbs - 70 psi
- Uses 'QuickLok' boltless locking system
- Suitable for use with KS100S, C100, H80, H100 H80KS, H100KS, and FG100 channels
- Manufactured from 11 gage, grade 304 stainless steel
- Complies with ADA - American Disabilities Act of 1990 Section 4.5.4
- Complies with ASME: A112.6.3 - 2001: Section 7.12 Heel Resistant Strainers and Grates
- Bicycle Tire Penetration Resistant to AS3996-2006



## Specifications

**General**

The surface drainage system shall be ACO Drain KS100S, C100, H80, H100, H80KS, H100KS, and FG100 channels\* complete with ACO Type 445/446 ADA Heelguard stainless steel grate with 'QuickLok' locking as manufactured by ACO Polymer Products, Inc. or similar approved.

**Materials**

The covers shall be manufactured from stainless steel and have *minimum* properties as follows:

- **Independently certified to meet Load Class A to DIN 19580 - 3,500 lbs - 70 psi**
- **11 gage, Grade 304 stainless steel**
- **intake area of 44.9 sq. in. (289.6 cm<sup>2</sup>) per half meter of grate**

The overall width of 4.84" (123mm) and overall length of 39.37" (1000mm) (Type 445) and 19.69" (500mm) (Type 446). Slots measure 0.20" (5mm) by 0.82" (21mm).

**Installation**

The trench drain system and grates shall be installed in accordance with the manufacturer's installation instructions and recommendations.

\* delete as appropriate

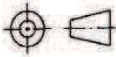
ACO Specification Information



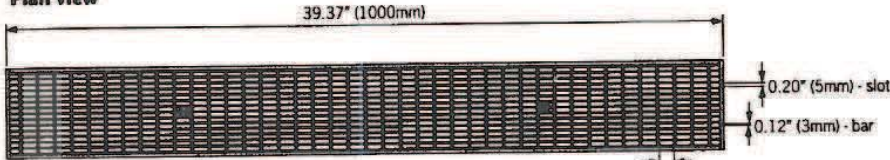


**ACO DRAIN**

**Type 445/446 grate details**



Plan view

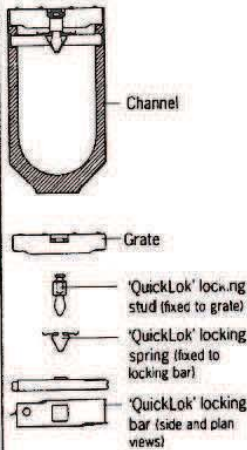


Side elevation



Description	Part No.	Length inches (mm)	Width inches (mm)	Weight lbs.
QuickLok grate				
Type 445 Stainless ADA grate	96764	39.37 (1000)	4.84 (123)	8.0
Type 446 Stainless ADA grate	96882	19.69 (500)	4.84 (123)	4.0
QuickLok locking bar	02899	-	-	0.2
QuickLok grate removal hook	01318	-	-	0.6

**'QuickLok' locking mechanism**



ACO 'QuickLok' is a patented bottless locking system, grates are removed and replaced with the minimum time and effort for ease of maintenance. The unique design provides a positive 'snap down' fit into the locking bar. A stud is fixed to the grate which 'locks' into the spring clip in the locking bar.

The 'QuickLok' stud is made from stainless steel and high density nylon, the locking bar and clip are stainless steel, for use in both general purpose and corrosive environments.

ACO Specification Information

**ACO Polymer Products, Inc.**

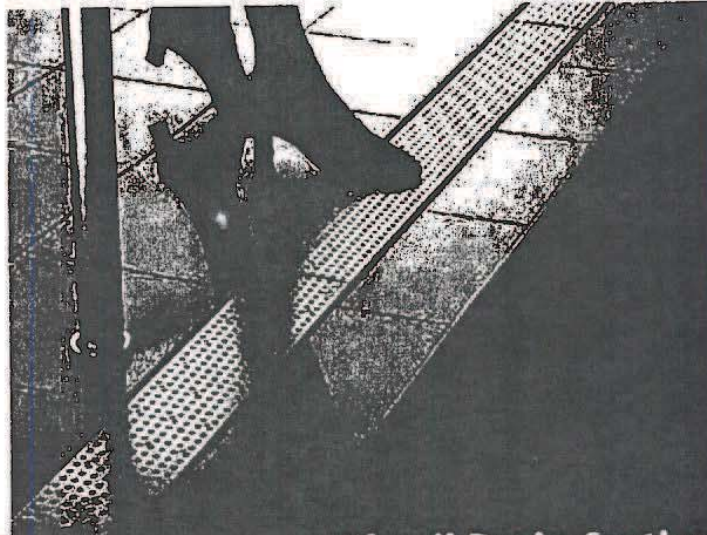
**East Sales Office**  
 P.O. Box 245  
 Chardon, OH 44024  
 Tel: (440) 285-7000  
 Toll free: (800) 543-4764  
 Fax: (440) 285-7005

**West Sales Office**  
 P.O. Box 12067  
 Casa Grande, AZ 85130-0559  
 Tel: (520) 421-9988  
 Toll Free: (888) 490-9552  
 Fax: (520) 421-9899

**Electronic Contact:**  
 info@acousa.com  
 www.acousa.com



# Technical Handbook and Product Catalog



## KlassikDrain Section

General purpose trench drainage

### Surface Drainage

- 06 Surface drainage options
- 08 Product selection
- 10 Trench drain hydraulics
- 14 Conditions
- 22 Material data
- 24 Fast user information

### Standard Products

- 26 KlassikDrain - K100S, KS100S
- FlowerDrain - S100K, S100R
- EnduraDrain - S100P, S100R
- AcouDrain
- AcouDrain - AcouDrain

This PDF relates to this section only

ACO Drain offer a comprehensive 116 page catalog covering everything you need to know about trench drainage and the products and services available.

To ease electronic transmission of data the catalog has been divided into sections - for a hard copy or other sections call (800) 543-4764 or (888) 490-9552 or go to [www.acousa.com](http://www.acousa.com).

### Problem Solving Products

- 28 AcouDrain - AcouDrain
- 30 AcouDrain - AcouDrain
- 32 AcouDrain - AcouDrain
- 34 AcouDrain - AcouDrain
- 36 AcouDrain - AcouDrain
- 38 AcouDrain - AcouDrain
- 40 AcouDrain - AcouDrain
- 42 AcouDrain - AcouDrain
- 44 AcouDrain - AcouDrain
- 46 AcouDrain - AcouDrain
- 48 AcouDrain - AcouDrain
- 50 AcouDrain - AcouDrain
- 52 AcouDrain - AcouDrain
- 54 AcouDrain - AcouDrain
- 56 AcouDrain - AcouDrain
- 58 AcouDrain - AcouDrain
- 60 AcouDrain - AcouDrain
- 62 AcouDrain - AcouDrain
- 64 AcouDrain - AcouDrain
- 66 AcouDrain - AcouDrain
- 68 AcouDrain - AcouDrain
- 70 AcouDrain - AcouDrain
- 72 AcouDrain - AcouDrain
- 74 AcouDrain - AcouDrain
- 76 AcouDrain - AcouDrain
- 78 AcouDrain - AcouDrain
- 80 AcouDrain - AcouDrain
- 82 AcouDrain - AcouDrain
- 84 AcouDrain - AcouDrain
- 86 AcouDrain - AcouDrain
- 88 AcouDrain - AcouDrain
- 90 AcouDrain - AcouDrain
- 92 AcouDrain - AcouDrain
- 94 AcouDrain - AcouDrain
- 96 AcouDrain - AcouDrain
- 98 AcouDrain - AcouDrain
- 100 AcouDrain - AcouDrain

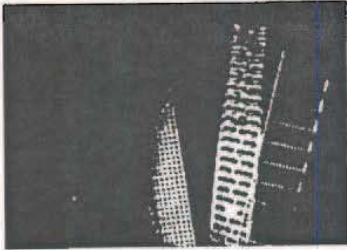
### Technical Support and Other Information

- 102 AcouDrain - AcouDrain
- 104 AcouDrain - AcouDrain
- 106 AcouDrain - AcouDrain
- 108 AcouDrain - AcouDrain
- 110 AcouDrain - AcouDrain
- 112 AcouDrain - AcouDrain
- 114 AcouDrain - AcouDrain
- 116 AcouDrain - AcouDrain
- 118 AcouDrain - AcouDrain
- 120 AcouDrain - AcouDrain
- 122 AcouDrain - AcouDrain
- 124 AcouDrain - AcouDrain
- 126 AcouDrain - AcouDrain
- 128 AcouDrain - AcouDrain
- 130 AcouDrain - AcouDrain
- 132 AcouDrain - AcouDrain
- 134 AcouDrain - AcouDrain
- 136 AcouDrain - AcouDrain
- 138 AcouDrain - AcouDrain
- 140 AcouDrain - AcouDrain
- 142 AcouDrain - AcouDrain
- 144 AcouDrain - AcouDrain
- 146 AcouDrain - AcouDrain
- 148 AcouDrain - AcouDrain
- 150 AcouDrain - AcouDrain
- 152 AcouDrain - AcouDrain
- 154 AcouDrain - AcouDrain
- 156 AcouDrain - AcouDrain
- 158 AcouDrain - AcouDrain
- 160 AcouDrain - AcouDrain
- 162 AcouDrain - AcouDrain
- 164 AcouDrain - AcouDrain
- 166 AcouDrain - AcouDrain
- 168 AcouDrain - AcouDrain
- 170 AcouDrain - AcouDrain
- 172 AcouDrain - AcouDrain
- 174 AcouDrain - AcouDrain
- 176 AcouDrain - AcouDrain
- 178 AcouDrain - AcouDrain
- 180 AcouDrain - AcouDrain
- 182 AcouDrain - AcouDrain
- 184 AcouDrain - AcouDrain
- 186 AcouDrain - AcouDrain
- 188 AcouDrain - AcouDrain
- 190 AcouDrain - AcouDrain
- 192 AcouDrain - AcouDrain
- 194 AcouDrain - AcouDrain
- 196 AcouDrain - AcouDrain
- 198 AcouDrain - AcouDrain
- 200 AcouDrain - AcouDrain

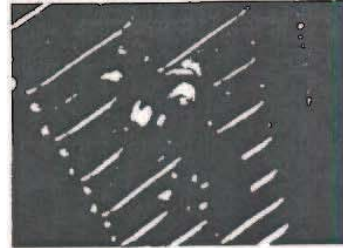




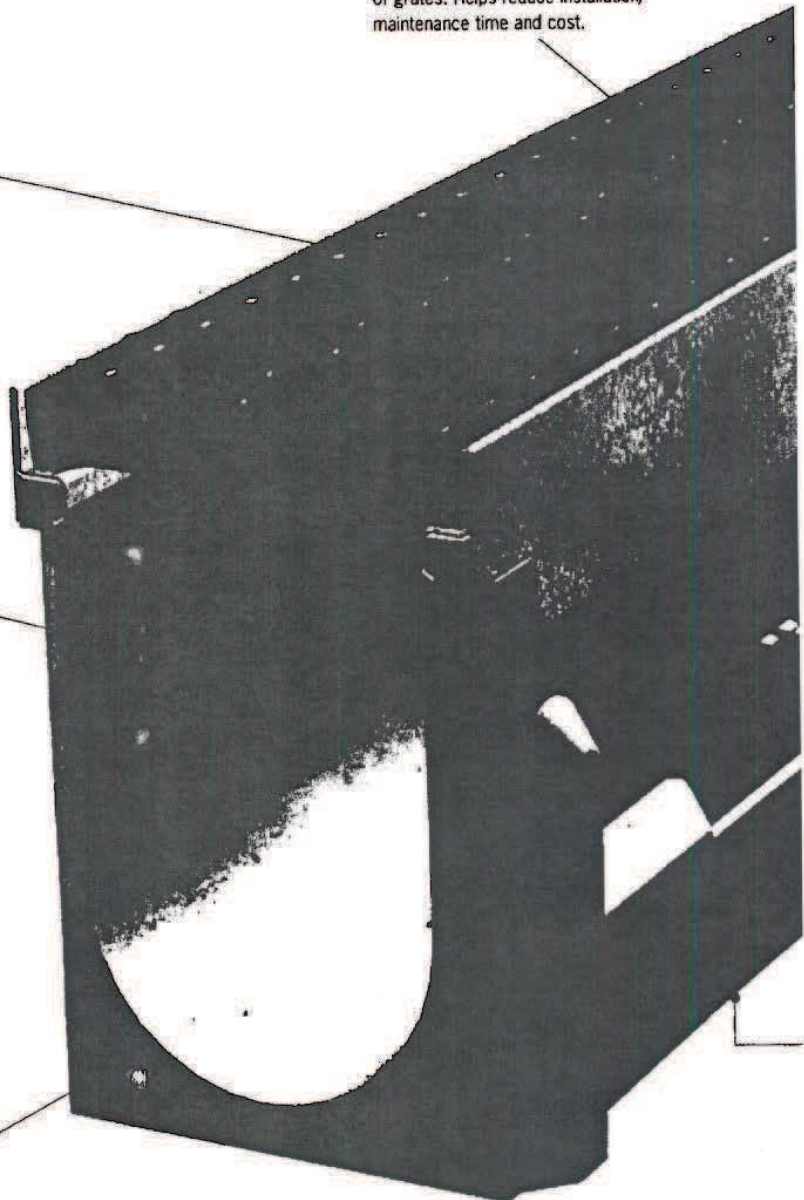
# KlassikDrain Features



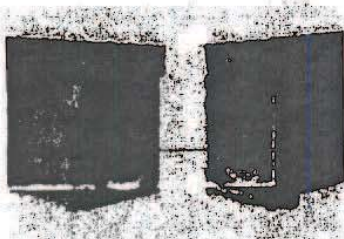
Wide choice of grates in various materials and styles (including ADA compliant) for applications from Load Class A to Load Class E.



QuickLok - patented, boltless locking system provides quick fitting and removal of grates. Helps reduce installation/maintenance time and cost.



4" internal width trench system - meter (39.37") and half meter (19.69") channel. 'U' shaped bottom improves flow hydraulics.

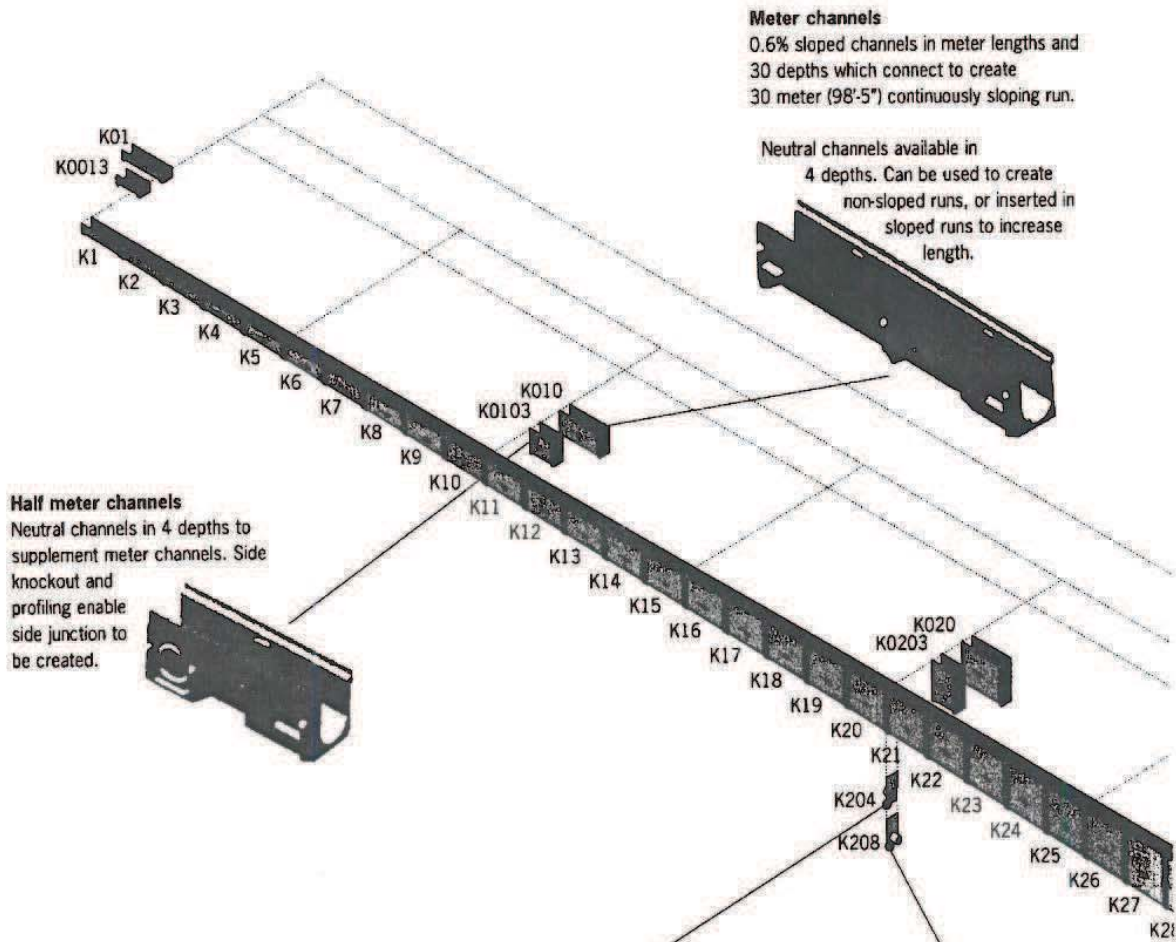


Interconnecting end profiles allow easy and effective joining of channels. Appropriate sealant can be used to create a sealed joint.



# KlassikDrain

## System layout



**Meter channels**  
 0.6% sloped channels in meter lengths and 30 depths which connect to create 30 meter (98'-5") continuously sloping run.

Neutral channels available in 4 depths. Can be used to create non-sloped runs, or inserted in sloped runs to increase length.

**Half meter channels**  
 Neutral channels in 4 depths to supplement meter channels. Side knockout and profiling enable side junction to be created.

**6" Sch. 40 inlet caps**  
 6" Schedule 40 plain end pipe, polypropylene oval to round adapter cast into polymer concrete end cap, available in two heights. Solvent weld to coupler.

*Note: These end caps cannot be cut to height, and fit only at positions shown in layout diagram.*

**6" Sch. 40 outlet caps**  
 6" Schedule 40 plain end pipe, polypropylene oval to round adapter cast into polymer concrete end cap, available in two heights. Solvent weld to coupler.

*Note: These end caps cannot be cut to height, and fit only at positions shown in layout diagram.*

## **PROVISIONS FOR ENCROACHMENT**

For Petition 2873

We will agree to the proposed encroachment subject to the fulfilling of the following provisions:

1. By approval of this petition the Detroit Water and Sewerage Department (DWSD) does not waive any of its rights to its facilities located in the street, and at all time, DWSD, its agents or employees, shall have the right to enter upon the street to maintain, repair, alter, service, inspect, or install its facilities. All costs incident to the damaging, dismantling, demolishing, removal and replacement of structures or other improvements herein permitted and incurred in gaining access to DWSD's facilities for maintenance, repairing, alteration, servicing or inspection by DWSD shall be borne by the petitioner. All costs associated with gaining access to DWSD's facilities, which could normally be expected had the petitioner not encroached into the street shall be borne by DWSD.
2. All construction performed under this petition shall not be commenced until after (5) days written notice to DWSD. Seventy-two (72) hours notice shall also be provided in accordance with P.A. 53 1974, as amended, utilizing the MISS DIG one call system.
3. Construction under this petition is subject to inspection and approval by DWSD forces. The cost of such inspection shall, at the discretion of DWSD, be borne by the petitioner.
4. If DWSD facilities located within the street shall break or be damaged as the result of any action on the part of the petitioner, then in such event the petitioner agrees to be liable for all costs incident to the repair, replacement or relocation of such broken or damaged DWSD facilities.
5. The petitioner shall hold DWSD harmless for any damage to the encroaching device constructed or installed under this petition, which may be caused by the failure of DWSD's facilities.
6. If at any time in the future the petitioner shall request removal and / or relocation of DWSD's facilities in the street being encroached upon the petitioner agrees to pay all costs for such removal and / or relocation.
7. Prior to construction, Easement Encroachment Permit (EEP) should be obtained and the insurance required by the EEP should not expire until after completion of the construction.

These provisions must be made a part of the City Council's Resolution granting the encroachment of the subject street.

S-28-A3



SM-28B4

20	100	153.33	113.82	113.82	113.82
19	100	153.33	113.82	113.82	113.82
18	100	153.33	113.82	113.82	113.82
17	100	153.33	113.82	113.82	113.82
16	100	153.33	113.82	113.82	113.82
15	100	153.33	113.82	113.82	113.82
14	100	153.33	113.82	113.82	113.82
13	100	153.33	113.82	113.82	113.82
12	100	153.33	113.82	113.82	113.82
11	100	153.33	113.82	113.82	113.82
10	100	153.33	113.82	113.82	113.82
9	100	153.33	113.82	113.82	113.82
8	100	153.33	113.82	113.82	113.82
7	100	153.33	113.82	113.82	113.82
6	100	153.33	113.82	113.82	113.82
5	100	153.33	113.82	113.82	113.82
4	100	153.33	113.82	113.82	113.82
3	100	153.33	113.82	113.82	113.82
2	100	153.33	113.82	113.82	113.82
1	100	153.33	113.82	113.82	113.82

S-28-B3





WM-2053

19-1

20-J-4

20-1-1





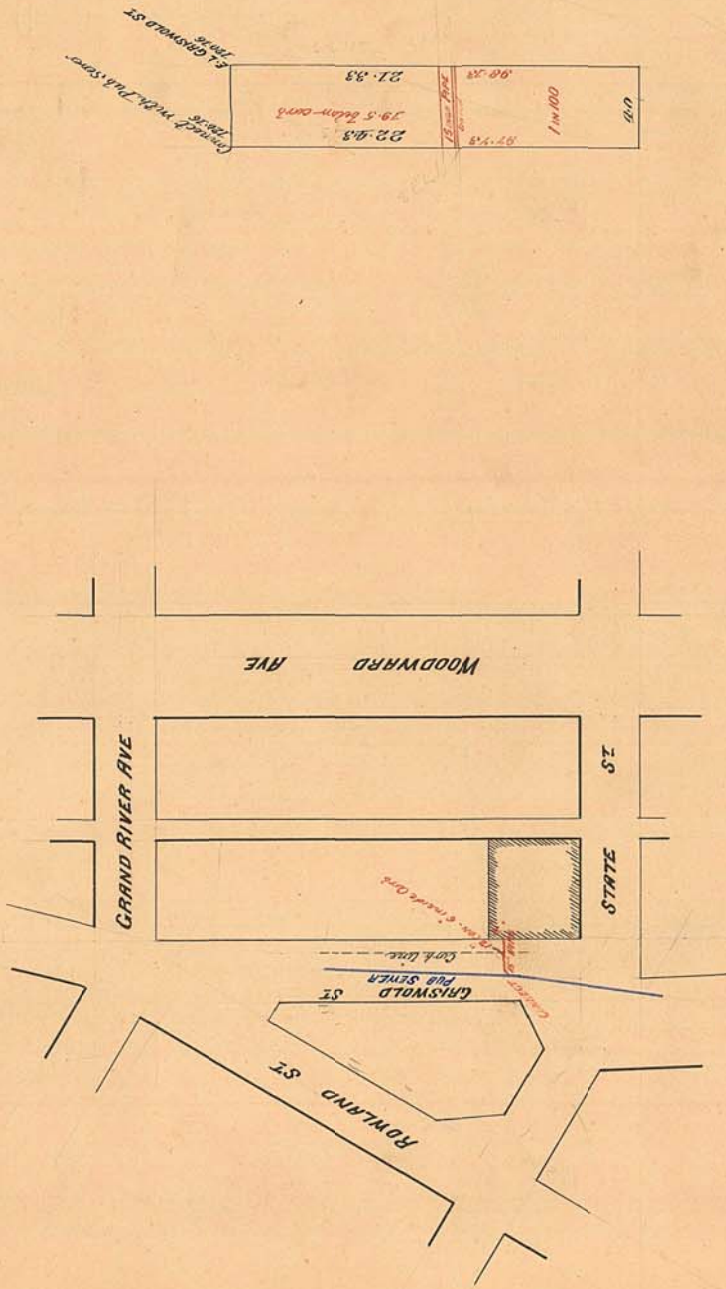
Sewer No 909  
Chamber of Commerce  
W. H. Henderson  
Dnr

**Sewer Connection in  
GRISWOLD ST  
Between  
STATE ST and GRAND RIVER AVE**

Grades  
Horizontal Line = 50 feet  
Vertical Line = 10 feet

Sewer  
Length of sewer 50 feet more or less - ~~Measured Length 40 feet~~  
" 15 inch pipe 40 ft. "  
" 1-19 inch connection  
Length of 22 inch pipe 4 feet  
Grade 1.00 per 100

Note - Where permitted excavations  
to be refilled with concrete.





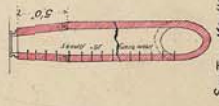
# PUBLIC SEWER IN STATE ST BETWEEN CRISWOLD AND CASS STREETS

WORK MAY BE TUNNEL OR OPEN AT THE OPTION OF CONTRACTOR.  
N.B. BIDDING WILL INVOLVE TENDERS IN REGARD TO EXISTING  
PIERS AND CHIMNEYS IN LINE OF PROPOSED SEWER.  
CONTRACTOR TO UNDERTAKE SYSTEM SHOWN BY  
BOOKS IN THIS OFFICE. "NOT GUARANTEED".

**SEWER**  
LENGTH OF SEWER 1120 FEET  
SIZE 28" x 24" x 2R 3.5  
No. of Man Holes 3  
No. of 12" Check Sumps 4.

SEWER TO BE CONSTRUCTED NORM. W/ SOCKET OR  
THICK. No. Connections to Access Manholes.

**SEWER**  
Length of Sewer 1220 feet  
Size 28" x 24" x 2R 3.5  
No. of Man Holes 3  
No. of 12" Check Sumps 4.



SECTION THREE SUMP  
28" x 24" x 2R 3.5

## SEC. 3.

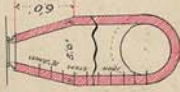
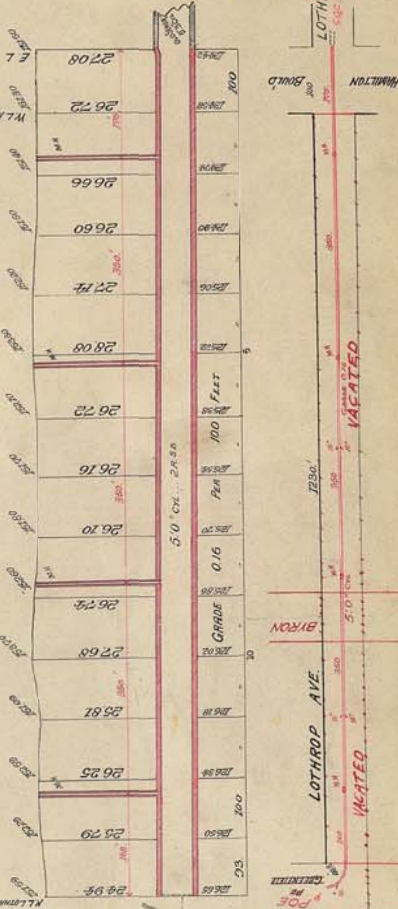
# PUBLIC SEWER IN LOTHROP AVENUE FROM HAMILTON TO NORTH LINE OF LOTHROP AT CENTER OF GREENFIELD AVENUE PRODUCED

**SEC. 3  
SEWER**  
1900

TOTAL LENGTH OF SEWER 1393 FT  
SIZE OF SEWER 51" DIA. x 2R 3.5  
NO. OF MAN HOLES 4  
GRADE 0.16 PER 100

Check Connections  
5. 12 Sumps

N.B. WORK MAY BE TUNNELLED  
OR IN OPEN TRENCH AT CONTRACTOR'S  
OPTION



SECTION THREE MANHOLE  
WITH IRON STEPS

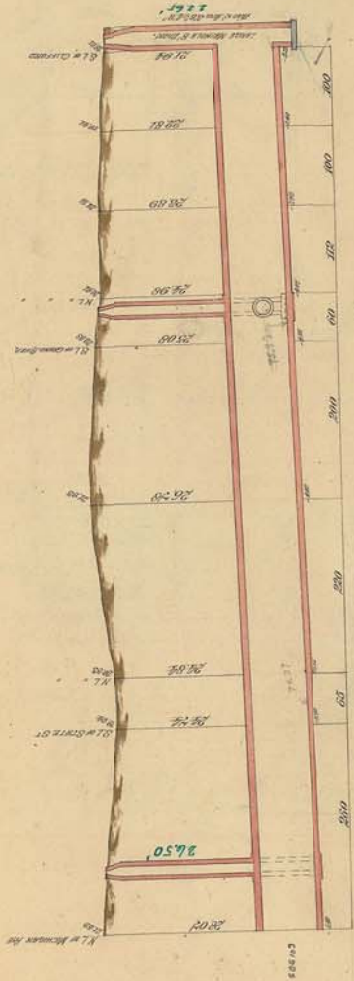


SECTION THREE SUMP  
50" DIA. x 2R 3.5

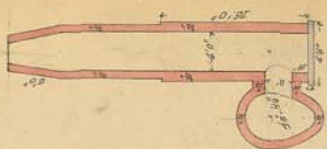
SEC. No. 2

PROFILE OF GRISWOLD ST SEWER

From North Line of Main Ave to Chicago St Street



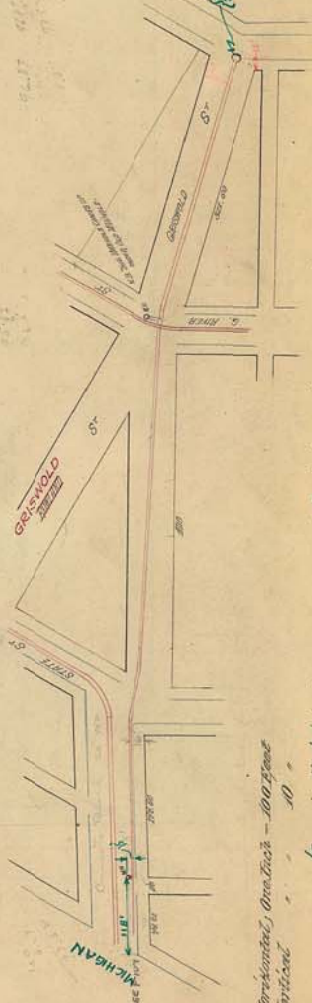
Section of Sewer - 10.35' dia.



Section of Manhole in Sewer

SEWER

Measured Length of Sewer 1662.74.  
 Size of Sewer 48" x 10' 12.50".  
 Grade . . . . . 0.00777-0.0075.



Well etc. fitted  
 to the ground.  
 Heavy bituminous coating.  
 Price per foot \$15.00

SCALE: Horizontal, One Inch = 100 Feet  
 Vertical 10'

(Sewer investigated by Gas. Gen. on 5-1-45 and found clean and in good condition)