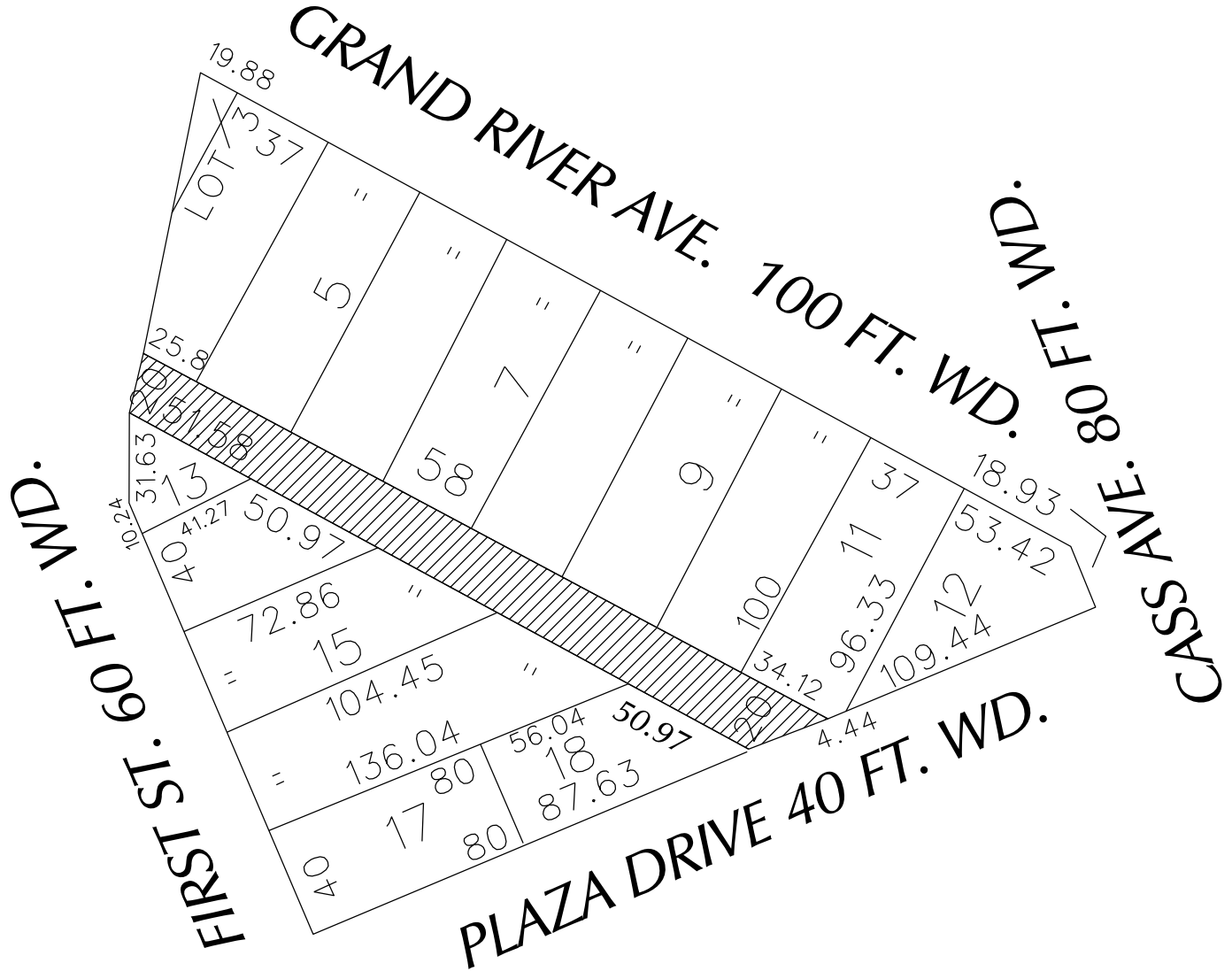


PETITION NO. 2847  
 DTE ENERGY  
 ONE ENERGY PLAZA  
 DETROIT, MICHIGAN 48226  
 C/O RODNEY E. COLE  
 PHONE NO. 313 235 9448



 - CONVERT OUTRIGHT VACATION WITH SUB SURFACE EASEMENT

(FOR OFFICE USE ONLY)

CARTO 28 B

**REQUEST OUTRIGHT VACATION WITH SUB SURFACE EASEMENT THE 20 FOOT WIDE ALLEY IN THE AREA BOUND BY FIRST, GRAND RIVER, CASS AND PLAZA DRIVE**

**CITY OF DETROIT**  
 CITY ENGINEERING DEPARTMENT  
 SURVEY BUREAU  
 JOB NO. 01-01  
 DRWG. NO. X 2847

B					
A					
DESCRIPTION	DRWN	CHKD	APPD	DATE	
REVISIONS					
DRAWN BY	KSM				CHECKED
DATE	7-15-13				APPROVED