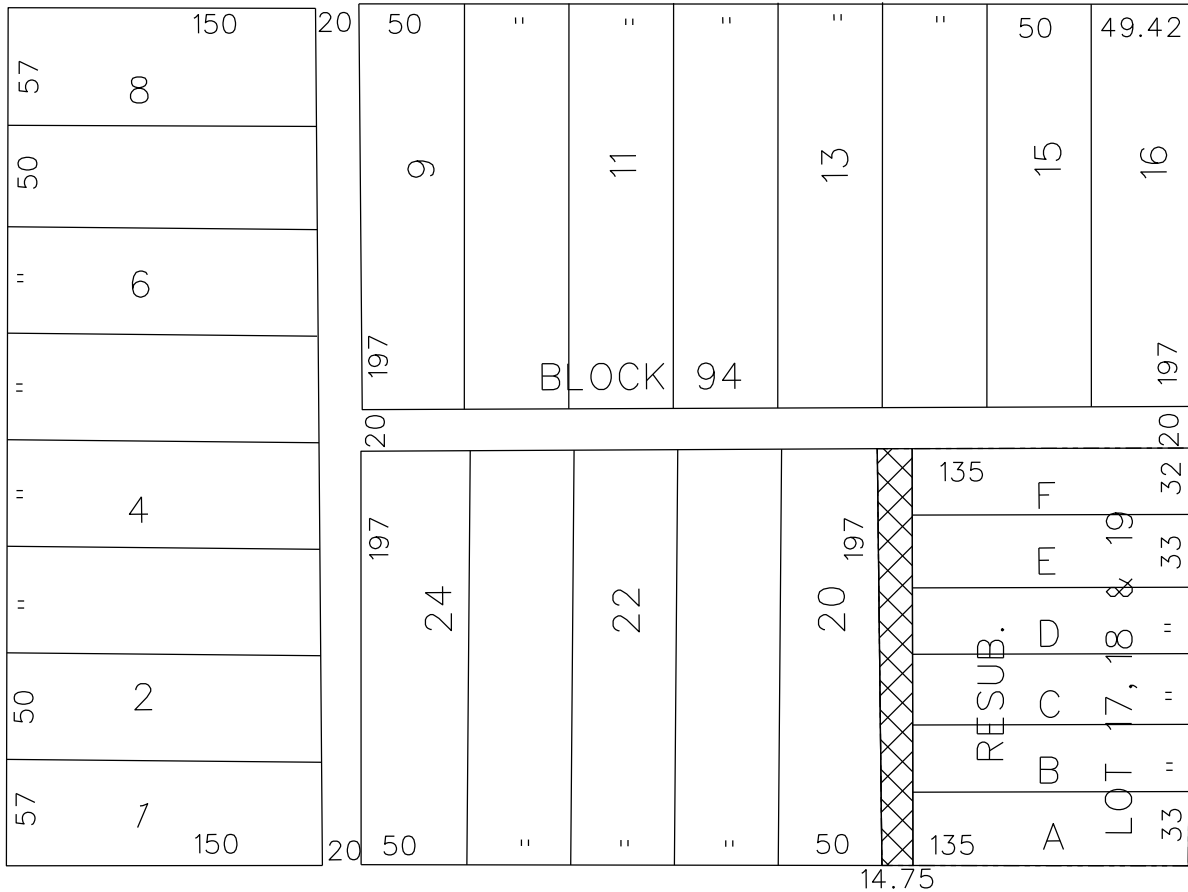


PETITION NO. 2825
 SELDEN GARDENS LLC
 4476 SECOND AVENUE
 DETROIT, MICHIGAN 48201
 C/O PAUL HOWARD



ALEXANDRINE AVE. 100 FT. WD.

THIRD AVE. 70 FEET WIDE



SECOND AVE. 100 FT. WD.

SELDEN AVE. 100 FT. WD.



- AREA OF TEMPORARY CLOSURE

(FOR OFFICE USE ONLY)

CARTO 29 B

B					
A					
DESCRIPTION		DRWN	CHKD	APPD	DATE
REVISIONS					
DRAWN BY		CHECKED			
KSM					
DATE		APPROVED			
6-20-13					

**REQUEST TEMPORARY CLOSURE
 OF 14.75 WD. N/S ALLEY
 IN BLOCK BOUND BY
 SECOND, SELDEN, THIRD
 AND ALEXANDRINE**

CITY OF DETROIT CITY ENGINEERING DEPARTMENT SURVEY BUREAU	
JOB NO.	01-01
DRWG. NO.	X2825.dgn