

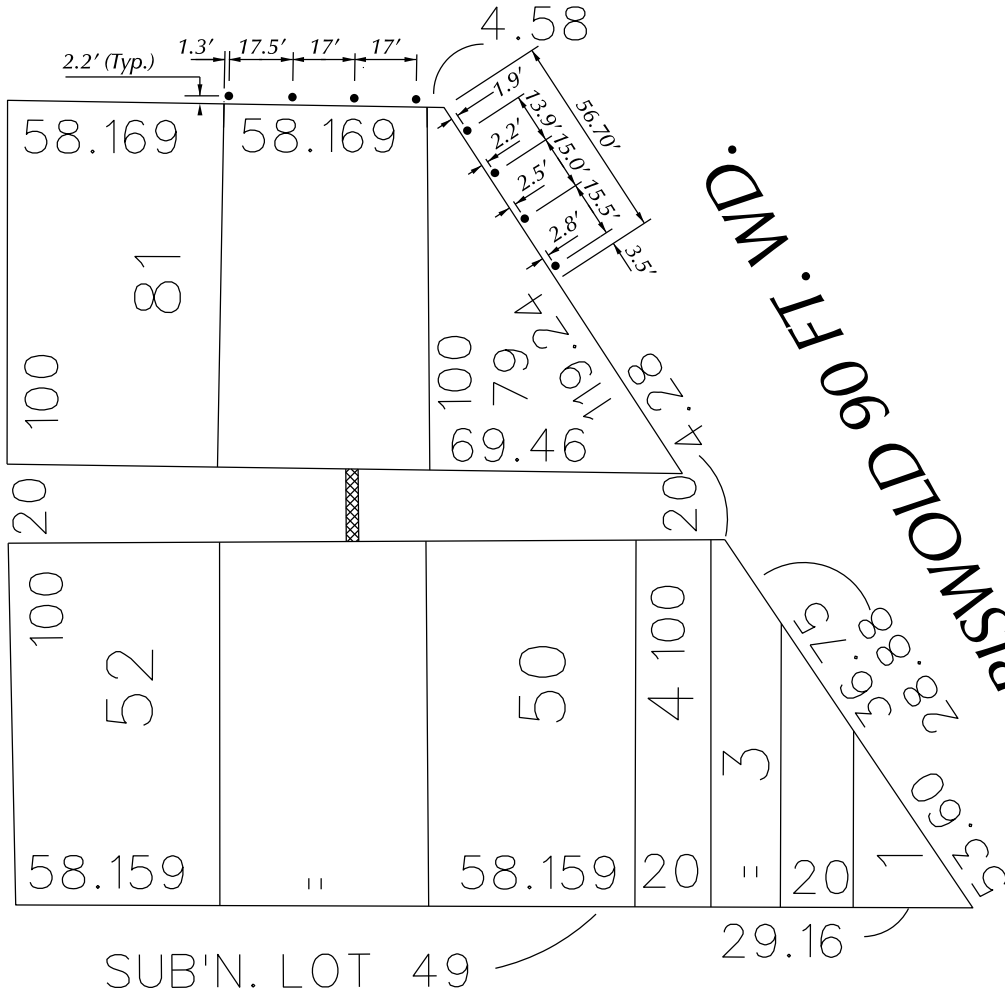
PETITION NO. 2799
 GIFFELS WEBSTER
 28 W. ADAMS
 SUITE 1200
 DETROIT, MICHIGAN 48226
 C/O JAMES FOSTER
 PHONE NO. 313 962 4442
 FAX NO. 313 962 5068



STATE ST. 60 FT. WD.

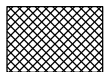
SHELBY ST. 60 FT. WD.

GRISWOLD 90 FT. WD.



MICHIGAN AVE. 100 FT. WD.

ENCROACHMENT



With aerial overpass 18 feet above alley



With 8 Drive Over flood lights

(FOR OFFICE USE ONLY)

CARTO 28 B

**REQUEST ENCROACHMENT
 18 FEET ABOVE 16 FOOT WIDE ALLEY
 (With Aerial Overpass
 and 8 Drive Over flood lights)
 IN THE AREA BOUND BY
 SHELBY ST., STATE ST., GRISWOLD
 AND MICHIGAN AVE.**

**CITY OF DETROIT
 CITY ENGINEERING DEPARTMENT
 SURVEY BUREAU**
 JOB NO. 01-01
 DRWG. NO. X2799

B					
A					
DESCRIPTION	DRWN	CHKD	APPD	DATE	
REVISIONS					
DRAWN BY	KSM		CHECKED		
DATE	7-2-13		APPROVED		