

FLOOR PLAN NOTES

- 1 NEW EXTERIOR WINDOW. NEW SOLID SURFACE WINDOW SILL TYPICAL AT EA. SEE EXTERIOR AND INTERIOR ELEVATIONS, AND DETAILS A109 FOR FURTHER INFORMATION.
- 2 NEW EXTERIOR WALL AND WINDOWS TO REPLICATE THE EXISTING TRUCK BAY DOORS. SEE EXTERIOR ELEVATIONS FOR FURTHER INFORMATION.
- 3 LINE OF NEW WALL FURRING.
3A: 1-1/2" Z FURRING CHANNELS WITH 1-1/2" RIGID INSULATION WITH 1/2" GYP. BD.
3B: 7/8" HAT CHANNEL WITH 3/8" GYP. BD.
3C: 3-5/8" METAL STUD FURRING WITH 3/8" GYP. BD.
- 4 RETURN NEW GYP. BD. TO ALL EXTERIOR DOORS AND WINDOWS.
- 5 NEW MILLWORK. SEE INTERIOR ELEVATIONS FOR FURTHER INFORMATION.
- 6 NEW SHELF AND ROD.
- 7 CONSTRUCT NEW FLOOR ASSEMBLY TO FILL IN EXISTING FLOOR OPENING. NEW ASSEMBLY TO CONSIST OF STEEL DECK AND POURED CONCRETE.
- 8 4" HIGH WALL. WALL TO BE 8" STEEL STUDS W/ GYP. BD. FINISH AND PLAM WALL CAP.
- 9 EXISTING STEEL SPIRAL STAIRCASE. NEW RUBBER TREADS ARE TO BE INSTALLED AND ENTIRE STAIRCASE IS TO BE REPAINTED.
- 10 UNDERSIDE OF MECHANICAL SHAFT TO BE ENCLOSURE WITH 1 HOUR RATED ASSEMBLY. SEE BUILDING SECTION FOR FURTHER INFORMATION.
- 11 NEW JANITOR SINK.
- 12 EXISTING PLUMBING STACK.
- 13 NOT USED.
- 14 EXISTING ELEVATOR.
- 15 NOT USED.
- 16 NEW HOT WATER TANK. REFER TO MECHANICAL PLANS FOR FURTHER INFORMATION.
- 17 NEW COUNTER TOP SINK.
- 18 NEW WALL MOUNTED "H-LOW" WATER COOLER. REFER TO PLUMBING PLANS.
- 19 NEW STEEL STAIRCASE. SEE SHEET A105 FOR ENLARGED PLANS.
- 20 BOX IN EXISTING PIPE WITH STEEL STUDS AND GYP. BD. ENCLOSURE. MAKE ENCLOSURE PROFILE AS SMALL AS POSSIBLE.
- 21 CLOSE OFF EXISTING DOOR OPENING WITH STEEL STUD FRAMING AND GYP. BD.
- 22 NEW WALL MOUNTED HANDRAIL ALUMINUM HANDRAILS AND WALL BRACKETS AT STAIR 1 AND RAMP WITHIN ROOM 108. ALL OTHER HANDRAILS THROUGHOUT TO BE PAINTED STEEL.
- 23 LOCATION OF VERTICAL HVAC DUCTS. REFER TO MECHANICAL PLANS FOR FURTHER INFORMATION.
- 24 NEW EXTERIOR BIKE RACK. PROVIDE STEEL BIKE RACK BOLTED TO CONCRETE SIDEWALK. CONSULT WITH ARCHITECT FOR FINAL LOCATION.
- 25 NEW STAIRCASE. REFER TO DETAIL 3/A105 FOR FURTHER INFORMATION.
- 26 AREA OF MISSING BRICK ABOVE DOOR OPENING IS TO BE CLOSED OFF WITH FIRE-RETARDANT 2x FRAMING AND GYP. BD. TO BE CUT AS REQUIRED TO NEATLY CLOSE OFF IRREGULAR HOLE IN WALL.
- 27 NEW WALL INFILL AT LOCATION OF EXISTING DOOR OPENING. INFILL TO BE MASONRY WITH GYP. BD. FINISH ON OFFICE SIDE OF WALL.
- 28 NEW STEEL BEAM. BEAM BEARS ON 5 POSTS WITHIN PROPOSED WALLS AND AT END BEARING. SEE STRUCTURAL CHART THIS SHEET.
- 29 NEW STEEL LINTEL. SEE STRUCTURAL CHART THIS SHEET.
- 30 LINE OF NEW 4" DEEP CONCRETE SLAB AT NEW STAIR LOCATION. SLAB TO BE 4"X4"X4" AT STAIR LANDING AREA.
- 31 PROVIDE WALL BLOCKING FOR WALL MOUNTED TELEVISION.
- 32 LOCATION OF WALL MOUNTED DOOR ACCESS CARD READER.
- 33 WALK OFF FLOOR MAT. MAT RECESSED TO DEPTH OF SURROUNDING CERAMIC TILE FLOORING. PERIMETER OF TILE OPENING TO BE FINISHED WITH ALUMINUM SCHLUTER EDGING.
- 34 CLEAN AND PATCH EXISTING JAMBS, HEAD, AND SILL OF DOOR OPENING.
- 35 CLEAN EXISTING GLAZED BRICK.
- 36 24"x24" STEEL ACCESS PANEL WITH HINGED DOOR AND LOCK.
- 37 NEW STEEL ANGLE FLOOR SUPPORT BENEATH NEW FLOOR OPENING ABOVE. SIZE OF FLOOR OPENING MUST BE COORDINATED WITH DUCTWORK SIZES AND PROPOSED WALL LOCATIONS OF SECOND FLOOR. SEE STRUCTURAL CHART SHEET A102.
- 38 NEW RAMP. RAMP TO BE CONSTRUCTED OF FIRE RETARDANT LUMBER. BASE TO BE FRAMED OF 2x LUMBER AT 12" O.C. WITH 1/2" PLYWD. SHEATHING. THICKNESS OF FINISH FLOORING IS TO BE TAKEN INTO ACCOUNT WHEN ESTABLISHING ELEVATION OF RAMP SURFACE.
- 39 EXISTING WOOD WAINSCOTING TO BE REFINISHED.
- 40 LOCATION WHERE NEW WALL FINISHED DIES INTO EXISTING MASONRY WALL. SEE DETAIL 1 SHEET A109.
- 41 PROVIDE RUBBER NOSING STRIP ALONG EDGE OF STAIR, VESTIBULE AND RISER TO BE TILE.
- 42 PROVIDE TRANSITION STRIP BETWEEN DIFFERING FLOORING MATERIALS.
- 43 6" DIA. CONDUIT. REFER TO M202.
- 44 WALL MOUNTED FIRE EXTINGUISHER CABINET. COORDINATE FINAL LOCATIONS WITH LOCAL FIRE MARSHAL.
- 45 PATCH GLAZED BRICK.
- 46 NEW MASONRY WALL AND OPENING. OPENING TO BE 8'-0" HIGH WITH NEW STEEL LINTEL.
- 47 NEW MASONRY WALL AND OPENING. EXISTING LINTEL TO BE REUSED.

WALL TYPES

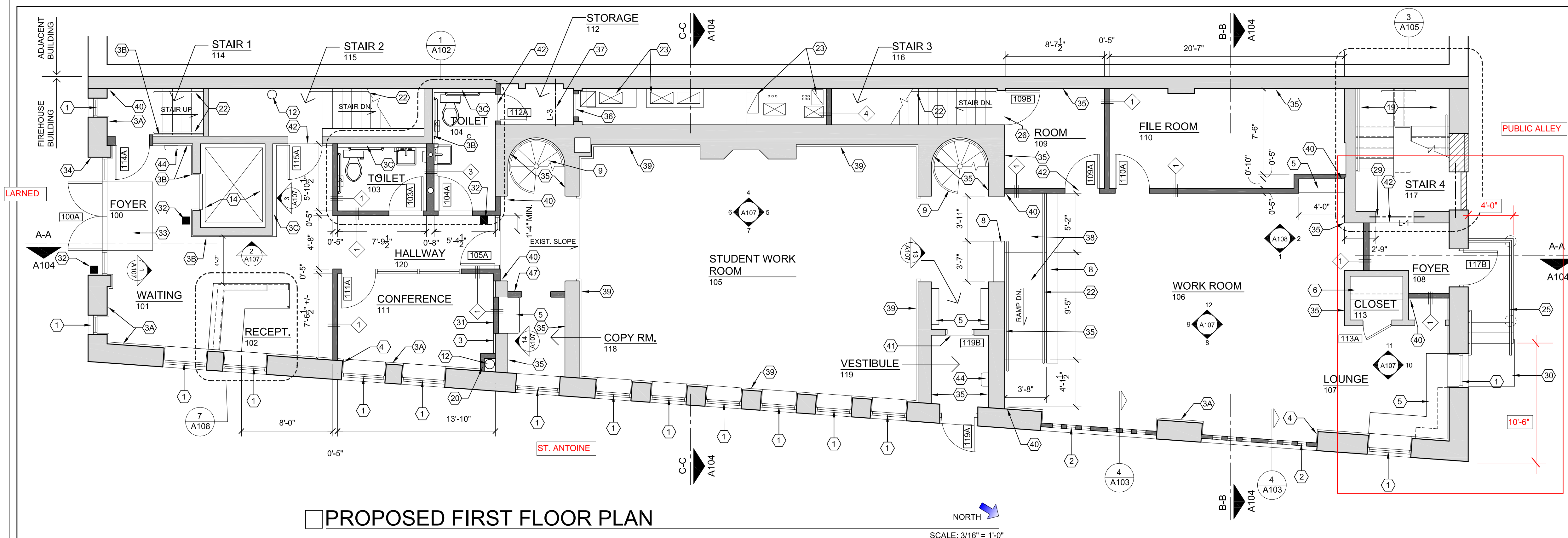
- 1 NON RATED PARTITION:
3-5/8" STEEL STUDS @ 16" O.C. WITH 3/8" GYPSUM BOARD BOTH SIDES. GYPSUM BOARD TO STOP 5" ABOVE FINISH CEILING. WALL CAVITY TO BE FILLED WITH SOUND ATTENUATING INSULATION.
- 2 NON RATED PARTITION:
6" STEEL STUDS @ 16" O.C. WITH 3/8" GYPSUM BOARD BOTH SIDES. GYPSUM BOARD TO STOP 5" SHORT OF DECK ABOVE. WALL CAVITY TO BE FILLED WITH SOUND ATTENUATING INSULATION.
- 3 NON RATED PARTITION:
8" STEEL STUDS @ 16" O.C. WITH 3/8" GYPSUM BOARD BOTH SIDES. GYPSUM BOARD TO STOP 5" SHORT OF DECK ABOVE. WALL CAVITY TO BE FILLED WITH SOUND ATTENUATING INSULATION.
- 4 1 HR RATED SHAFT WALL:
3-5/8" STEEL STUDS @ 16" O.C. WITH 2 LAYER 3/8" GYPSUM BOARD BOTH SIDES FROM FLOOR TO DECK ABOVE.
NOTE: ALL PARTITIONS WHICH SURROUND THE DUCT SHAFTS ARE TO BE RATED.

LEGEND

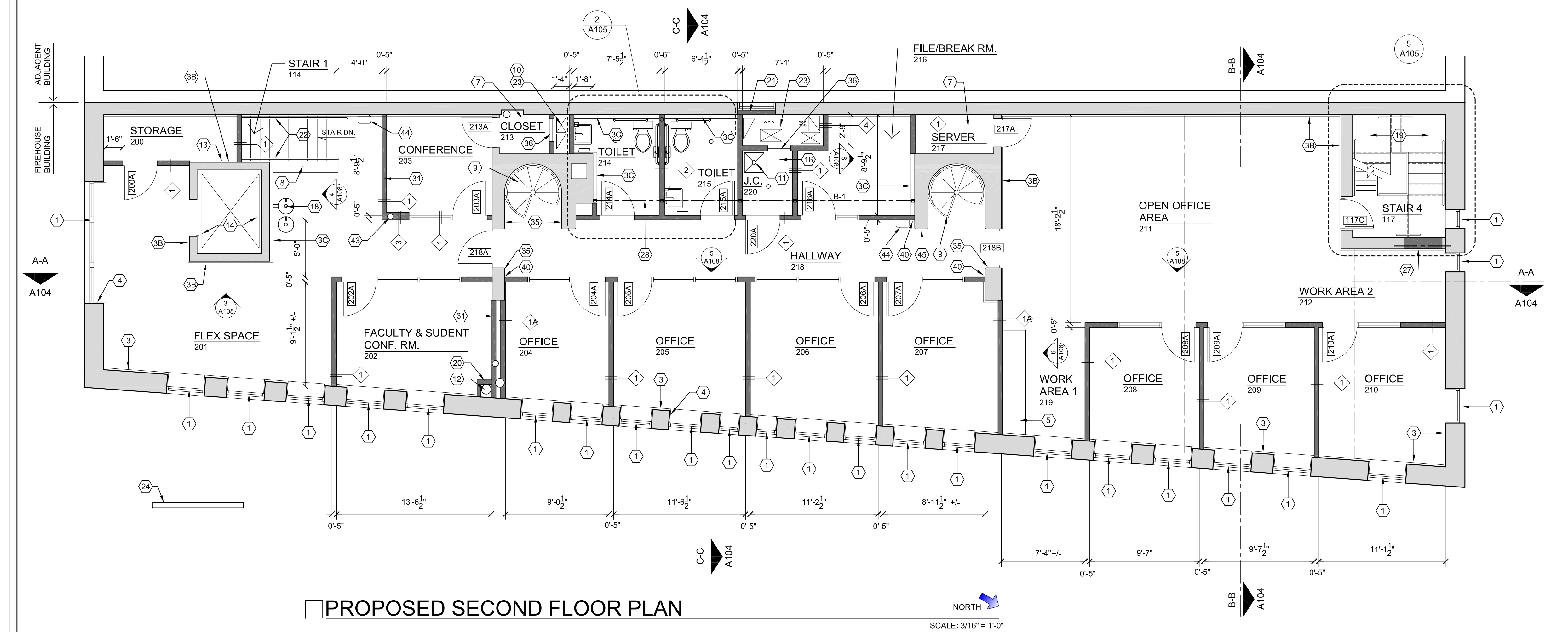
- [TSSA] NEW DOOR TAG
- [Hatched Box] EXISTING WALL
- [Solid Box] NEW WALL

STRUCTURAL MEMBER SIZING

TAG	SIZE	NOTE
L-1	(2) L6x6x3/8 W/ PLATE	DBL. ANGLE LINTEL W/ 1/2" WELDED BOTTOM PLATE
L-2	L5x5x3/8	WELDED FRAMES TO SIZE OF FLOOR OPENING
L-3	L5x5x3/8	WELDED FRAMES TO SIZE OF FLOOR OPENING
B-1	W8x10	BEAM TO BEAR ON TS3x3x3/8 STEEL POSTS WITH 3/8" STEEL T & B PLATES.



PROPOSED FIRST FLOOR PLAN



PROPOSED SECOND FLOOR PLAN