

City of Detroit
**City Engineering Division, Department of Public Works
Survey Bureau**

NOTICE OF PROPOSED CHANGE IN PROPERTY

Date: MAY 15, 2013

Petition: X2754

- | | |
|---|--|
| <input type="checkbox"/> AT&T Telecommunication | |
| <input type="checkbox"/> Cable Television (CATV) | <input type="checkbox"/> Vacation |
| <input type="checkbox"/> Detroit Edison (DTE) | |
| <input type="checkbox"/> Michigan Consolidated Gas (DTE) | <input checked="" type="checkbox"/> Conversion to Easement |
| <input type="checkbox"/> Fire Department | <input type="checkbox"/> Dedication |
| <input type="checkbox"/> Planning & Development Department | |
| <input type="checkbox"/> Public Lighting Dept. - Communication Division | <input type="checkbox"/> Encroachment |
| <input type="checkbox"/> Public Lighting Dept. - Overhead Line Division | |
| <input type="checkbox"/> Public Lighting Dept. - Underground Division | <input type="checkbox"/> Temporary Closing |
| <input type="checkbox"/> Police Department | |
| <input type="checkbox"/> Recreation Department | <input type="checkbox"/> Berm Use |
| <input type="checkbox"/> Sanitation Division, DPW | |
| <input type="checkbox"/> Street Design Bureau, DPW | |
| <input type="checkbox"/> Street Maintenance Division, DPW | |
| <input type="checkbox"/> Street and Traffic Division, DPW | |
| <input type="checkbox"/> Water and Sewerage Dept. - Sewer Design | |
| <input type="checkbox"/> Water and Sewerage Dept. - Water Design | |

A petition drawing is attached. Property shown on the attached print is proposed to be changed as indicated.

Kindly report (using the back of this sheet) the nature of your services (if any) affected by the proposed change and the estimated costs of removing and rerouting such services (if necessary).

Please return one copy to City Engineering Division, DPW. Retain one copy and print for you file.

Alfred Jordan, Director, Department of Public Works

By: Richard Doherty, CED DPW
Head Engineer

**TO: City Engineering Division, DPW
65 Cadillac Square, Suite 900
Detroit, Michigan 48226-2873
Survey Bureau: 313-224-3970
Fax: 313-224-3471**

The proposed change in property (referred to on the other side of this sheet) would affect our services as follows:

- Not Involved
- Involved; but asking you to hold action on this petition until further notice.
- Involved; but no objections to the property change .
- Involved; but no objections to the property change...provided as easement of the full width of the public right-of-way (street, alley or other public place) is reserved.
- Involved; the nature of our services, and the estimated costs of removing and/or rerouting such services are:

AT&T
(Utility or City Department)

DEREK BULKLEY
By

DESIGN ENGINEER
Title

5/29/13
Date

(313) 240-5480
Area code – Telephone number

north



Congress Street

St. Antoine

Public Alley

exterior stair

UDM Law School Parking

barricade

pedestrian circulation - 4 weeks starting oct. 1

window removal & replacement on three sides - 1 week starting oct. 1

new water main for fire supression - 2 weeks

boom truck for rooftop unit install - 1 day lane closure (oct. 1)

exterior stair - 1 week

alcove infill - 3 weeks

PROJECT SITE
UDM Law Clinic
585 Larned

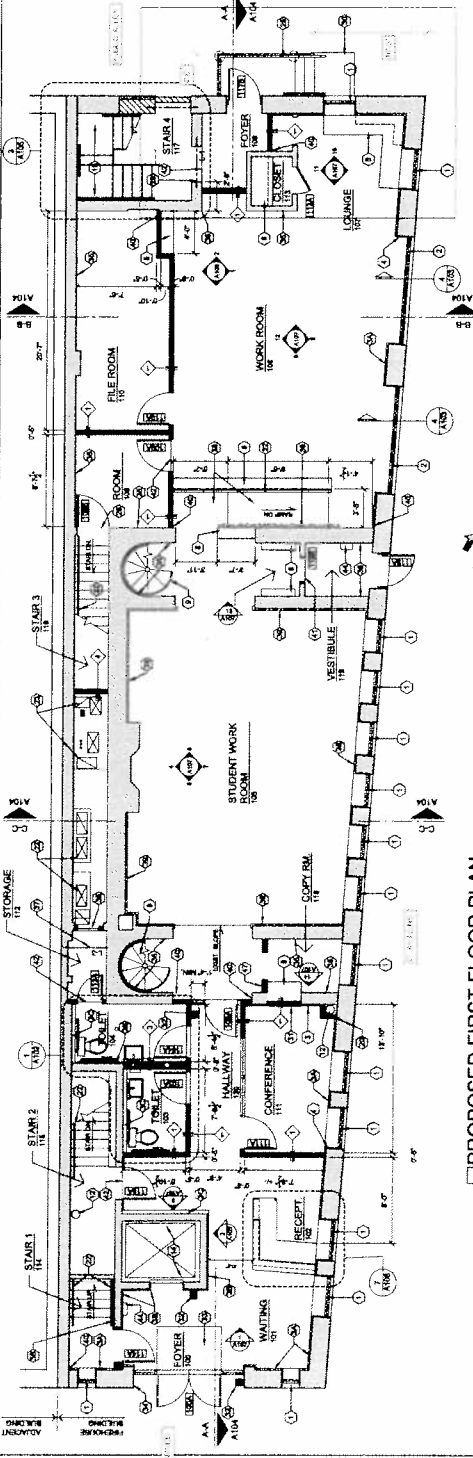
remove existing main entry infill & install new storefront

Larned Street

UDM Law Clinic Renovation Project
McCarthy Smith Construction
September 25, 2012

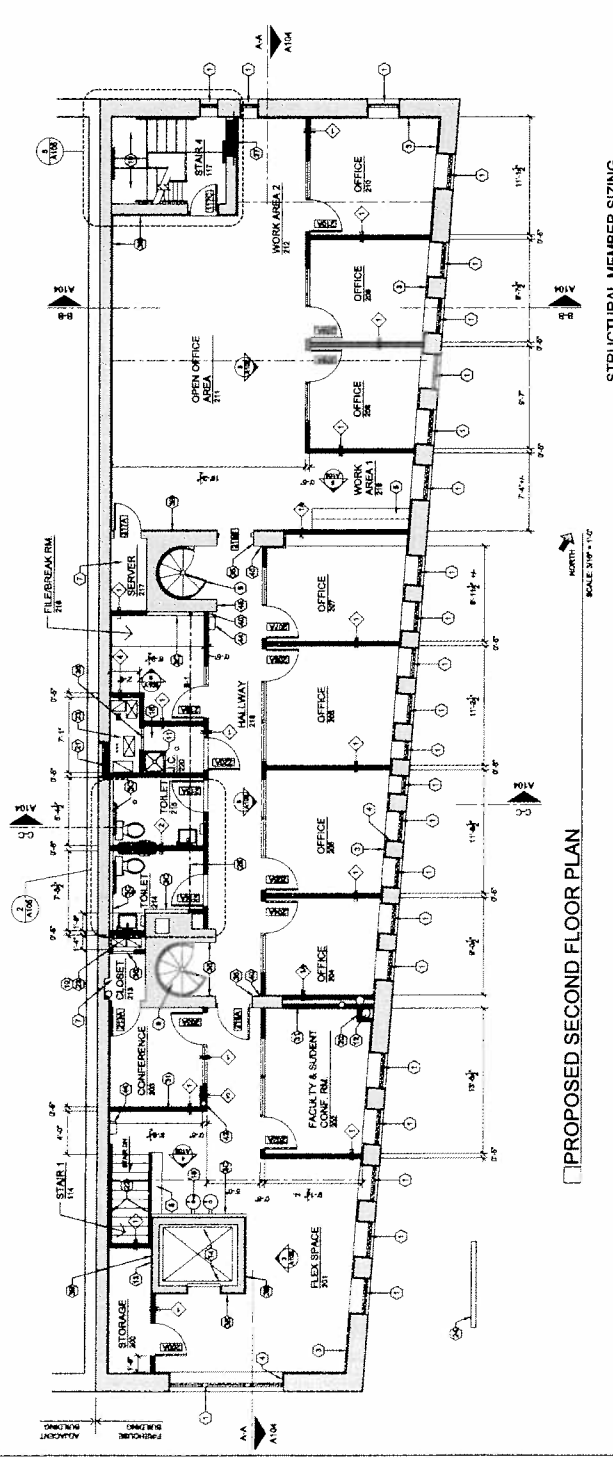
FLOOR PLAN NOTES

- 1 NEW STAIRCASE BEARS TO DETAIL BASIS FOR FURTHER INFORMATION.
- 2 AREA OF MESSING ROOM AND KITCHEN OPENING IS TO BE CLOSED OFF WITH 1/2" GYP BOARD TO BE CUT AS REQUIRED TO BE IN LINE WITH EXISTING WALL.
- 3 NEW WALLS AT LOCATION OF EXISTING WALLS TO BE CONSTRUCTED WITH 1/2" GYP BOARD ON OUTSIDE SIDE OF WALL.
- 4 NEW STEEL BEAM BEAM BEAM ON TOP OF EXISTING WALL TO BE CONSTRUCTED WITH 1/2" GYP BOARD ON OUTSIDE SIDE OF WALL.
- 5 NEW STEEL LATEL BE STRUCTURAL. CONSULT THE SHEET.
- 6 USE OF NEW STEEL CORNER BRACKET AT CORNER OF WALL TO BE CONSTRUCTED AT STAIR LANDING AREA.
- 7 PROVIDE WALL BEARING FOR WALL.
- 8 PROVIDE WALL BEARING FOR WALL.
- 9 PROVIDE WALL BEARING FOR WALL.
- 10 PROVIDE WALL BEARING FOR WALL.
- 11 PROVIDE WALL BEARING FOR WALL.
- 12 PROVIDE WALL BEARING FOR WALL.
- 13 PROVIDE WALL BEARING FOR WALL.
- 14 PROVIDE WALL BEARING FOR WALL.
- 15 PROVIDE WALL BEARING FOR WALL.
- 16 PROVIDE WALL BEARING FOR WALL.
- 17 PROVIDE WALL BEARING FOR WALL.
- 18 PROVIDE WALL BEARING FOR WALL.
- 19 PROVIDE WALL BEARING FOR WALL.
- 20 PROVIDE WALL BEARING FOR WALL.
- 21 PROVIDE WALL BEARING FOR WALL.
- 22 PROVIDE WALL BEARING FOR WALL.
- 23 PROVIDE WALL BEARING FOR WALL.
- 24 PROVIDE WALL BEARING FOR WALL.
- 25 PROVIDE WALL BEARING FOR WALL.
- 26 PROVIDE WALL BEARING FOR WALL.
- 27 PROVIDE WALL BEARING FOR WALL.
- 28 PROVIDE WALL BEARING FOR WALL.
- 29 PROVIDE WALL BEARING FOR WALL.
- 30 PROVIDE WALL BEARING FOR WALL.
- 31 PROVIDE WALL BEARING FOR WALL.
- 32 PROVIDE WALL BEARING FOR WALL.
- 33 PROVIDE WALL BEARING FOR WALL.
- 34 PROVIDE WALL BEARING FOR WALL.
- 35 PROVIDE WALL BEARING FOR WALL.
- 36 PROVIDE WALL BEARING FOR WALL.
- 37 PROVIDE WALL BEARING FOR WALL.
- 38 PROVIDE WALL BEARING FOR WALL.
- 39 PROVIDE WALL BEARING FOR WALL.
- 40 PROVIDE WALL BEARING FOR WALL.
- 41 PROVIDE WALL BEARING FOR WALL.
- 42 PROVIDE WALL BEARING FOR WALL.
- 43 PROVIDE WALL BEARING FOR WALL.
- 44 PROVIDE WALL BEARING FOR WALL.
- 45 PROVIDE WALL BEARING FOR WALL.
- 46 PROVIDE WALL BEARING FOR WALL.
- 47 PROVIDE WALL BEARING FOR WALL.
- 48 PROVIDE WALL BEARING FOR WALL.
- 49 PROVIDE WALL BEARING FOR WALL.
- 50 PROVIDE WALL BEARING FOR WALL.
- 51 PROVIDE WALL BEARING FOR WALL.
- 52 PROVIDE WALL BEARING FOR WALL.
- 53 PROVIDE WALL BEARING FOR WALL.
- 54 PROVIDE WALL BEARING FOR WALL.
- 55 PROVIDE WALL BEARING FOR WALL.
- 56 PROVIDE WALL BEARING FOR WALL.
- 57 PROVIDE WALL BEARING FOR WALL.
- 58 PROVIDE WALL BEARING FOR WALL.
- 59 PROVIDE WALL BEARING FOR WALL.
- 60 PROVIDE WALL BEARING FOR WALL.
- 61 PROVIDE WALL BEARING FOR WALL.
- 62 PROVIDE WALL BEARING FOR WALL.
- 63 PROVIDE WALL BEARING FOR WALL.
- 64 PROVIDE WALL BEARING FOR WALL.
- 65 PROVIDE WALL BEARING FOR WALL.
- 66 PROVIDE WALL BEARING FOR WALL.
- 67 PROVIDE WALL BEARING FOR WALL.
- 68 PROVIDE WALL BEARING FOR WALL.
- 69 PROVIDE WALL BEARING FOR WALL.
- 70 PROVIDE WALL BEARING FOR WALL.
- 71 PROVIDE WALL BEARING FOR WALL.
- 72 PROVIDE WALL BEARING FOR WALL.
- 73 PROVIDE WALL BEARING FOR WALL.
- 74 PROVIDE WALL BEARING FOR WALL.
- 75 PROVIDE WALL BEARING FOR WALL.
- 76 PROVIDE WALL BEARING FOR WALL.
- 77 PROVIDE WALL BEARING FOR WALL.
- 78 PROVIDE WALL BEARING FOR WALL.
- 79 PROVIDE WALL BEARING FOR WALL.
- 80 PROVIDE WALL BEARING FOR WALL.
- 81 PROVIDE WALL BEARING FOR WALL.
- 82 PROVIDE WALL BEARING FOR WALL.
- 83 PROVIDE WALL BEARING FOR WALL.
- 84 PROVIDE WALL BEARING FOR WALL.
- 85 PROVIDE WALL BEARING FOR WALL.
- 86 PROVIDE WALL BEARING FOR WALL.
- 87 PROVIDE WALL BEARING FOR WALL.
- 88 PROVIDE WALL BEARING FOR WALL.
- 89 PROVIDE WALL BEARING FOR WALL.
- 90 PROVIDE WALL BEARING FOR WALL.
- 91 PROVIDE WALL BEARING FOR WALL.
- 92 PROVIDE WALL BEARING FOR WALL.
- 93 PROVIDE WALL BEARING FOR WALL.
- 94 PROVIDE WALL BEARING FOR WALL.
- 95 PROVIDE WALL BEARING FOR WALL.
- 96 PROVIDE WALL BEARING FOR WALL.
- 97 PROVIDE WALL BEARING FOR WALL.
- 98 PROVIDE WALL BEARING FOR WALL.
- 99 PROVIDE WALL BEARING FOR WALL.
- 100 PROVIDE WALL BEARING FOR WALL.



PROPOSED FIRST FLOOR PLAN

SCALE 3/8" = 1'-0"



PROPOSED SECOND FLOOR PLAN

SCALE 3/8" = 1'-0"

WALL TYPES

- 1 NON RATED PARTITION.
- 2 NON RATED PARTITION.
- 3 NON RATED PARTITION.
- 4 NON RATED PARTITION.
- 5 NON RATED PARTITION.
- 6 NON RATED PARTITION.
- 7 NON RATED PARTITION.
- 8 NON RATED PARTITION.
- 9 NON RATED PARTITION.
- 10 NON RATED PARTITION.
- 11 NON RATED PARTITION.
- 12 NON RATED PARTITION.
- 13 NON RATED PARTITION.
- 14 NON RATED PARTITION.
- 15 NON RATED PARTITION.
- 16 NON RATED PARTITION.
- 17 NON RATED PARTITION.
- 18 NON RATED PARTITION.
- 19 NON RATED PARTITION.
- 20 NON RATED PARTITION.
- 21 NON RATED PARTITION.
- 22 NON RATED PARTITION.
- 23 NON RATED PARTITION.
- 24 NON RATED PARTITION.
- 25 NON RATED PARTITION.
- 26 NON RATED PARTITION.
- 27 NON RATED PARTITION.
- 28 NON RATED PARTITION.
- 29 NON RATED PARTITION.
- 30 NON RATED PARTITION.
- 31 NON RATED PARTITION.
- 32 NON RATED PARTITION.
- 33 NON RATED PARTITION.
- 34 NON RATED PARTITION.
- 35 NON RATED PARTITION.
- 36 NON RATED PARTITION.
- 37 NON RATED PARTITION.
- 38 NON RATED PARTITION.
- 39 NON RATED PARTITION.
- 40 NON RATED PARTITION.
- 41 NON RATED PARTITION.
- 42 NON RATED PARTITION.
- 43 NON RATED PARTITION.
- 44 NON RATED PARTITION.
- 45 NON RATED PARTITION.
- 46 NON RATED PARTITION.
- 47 NON RATED PARTITION.
- 48 NON RATED PARTITION.
- 49 NON RATED PARTITION.
- 50 NON RATED PARTITION.
- 51 NON RATED PARTITION.
- 52 NON RATED PARTITION.
- 53 NON RATED PARTITION.
- 54 NON RATED PARTITION.
- 55 NON RATED PARTITION.
- 56 NON RATED PARTITION.
- 57 NON RATED PARTITION.
- 58 NON RATED PARTITION.
- 59 NON RATED PARTITION.
- 60 NON RATED PARTITION.
- 61 NON RATED PARTITION.
- 62 NON RATED PARTITION.
- 63 NON RATED PARTITION.
- 64 NON RATED PARTITION.
- 65 NON RATED PARTITION.
- 66 NON RATED PARTITION.
- 67 NON RATED PARTITION.
- 68 NON RATED PARTITION.
- 69 NON RATED PARTITION.
- 70 NON RATED PARTITION.
- 71 NON RATED PARTITION.
- 72 NON RATED PARTITION.
- 73 NON RATED PARTITION.
- 74 NON RATED PARTITION.
- 75 NON RATED PARTITION.
- 76 NON RATED PARTITION.
- 77 NON RATED PARTITION.
- 78 NON RATED PARTITION.
- 79 NON RATED PARTITION.
- 80 NON RATED PARTITION.
- 81 NON RATED PARTITION.
- 82 NON RATED PARTITION.
- 83 NON RATED PARTITION.
- 84 NON RATED PARTITION.
- 85 NON RATED PARTITION.
- 86 NON RATED PARTITION.
- 87 NON RATED PARTITION.
- 88 NON RATED PARTITION.
- 89 NON RATED PARTITION.
- 90 NON RATED PARTITION.
- 91 NON RATED PARTITION.
- 92 NON RATED PARTITION.
- 93 NON RATED PARTITION.
- 94 NON RATED PARTITION.
- 95 NON RATED PARTITION.
- 96 NON RATED PARTITION.
- 97 NON RATED PARTITION.
- 98 NON RATED PARTITION.
- 99 NON RATED PARTITION.
- 100 NON RATED PARTITION.

LEGEND

- 10001 NEW FLOORING
- 10002 EXISTING WALL
- 10003 NEW WALL

STRUCTURAL MEMBER SIZING

| TABLE | SIZE | NOTE |
|-------|------------|----------|
| L1 | 24" I BEAM | W/ PLATE |
| L2 | 24" I BEAM | W/ PLATE |
| L3 | 24" I BEAM | W/ PLATE |
| L4 | 24" I BEAM | W/ PLATE |
| L5 | 24" I BEAM | W/ PLATE |
| L6 | 24" I BEAM | W/ PLATE |
| L7 | 24" I BEAM | W/ PLATE |
| L8 | 24" I BEAM | W/ PLATE |
| L9 | 24" I BEAM | W/ PLATE |
| L10 | 24" I BEAM | W/ PLATE |
| L11 | 24" I BEAM | W/ PLATE |
| L12 | 24" I BEAM | W/ PLATE |
| L13 | 24" I BEAM | W/ PLATE |
| L14 | 24" I BEAM | W/ PLATE |
| L15 | 24" I BEAM | W/ PLATE |
| L16 | 24" I BEAM | W/ PLATE |
| L17 | 24" I BEAM | W/ PLATE |
| L18 | 24" I BEAM | W/ PLATE |
| L19 | 24" I BEAM | W/ PLATE |
| L20 | 24" I BEAM | W/ PLATE |
| L21 | 24" I BEAM | W/ PLATE |
| L22 | 24" I BEAM | W/ PLATE |
| L23 | 24" I BEAM | W/ PLATE |
| L24 | 24" I BEAM | W/ PLATE |
| L25 | 24" I BEAM | W/ PLATE |
| L26 | 24" I BEAM | W/ PLATE |
| L27 | 24" I BEAM | W/ PLATE |
| L28 | 24" I BEAM | W/ PLATE |
| L29 | 24" I BEAM | W/ PLATE |
| L30 | 24" I BEAM | W/ PLATE |
| L31 | 24" I BEAM | W/ PLATE |
| L32 | 24" I BEAM | W/ PLATE |
| L33 | 24" I BEAM | W/ PLATE |
| L34 | 24" I BEAM | W/ PLATE |
| L35 | 24" I BEAM | W/ PLATE |
| L36 | 24" I BEAM | W/ PLATE |
| L37 | 24" I BEAM | W/ PLATE |
| L38 | 24" I BEAM | W/ PLATE |
| L39 | 24" I BEAM | W/ PLATE |
| L40 | 24" I BEAM | W/ PLATE |
| L41 | 24" I BEAM | W/ PLATE |
| L42 | 24" I BEAM | W/ PLATE |
| L43 | 24" I BEAM | W/ PLATE |
| L44 | 24" I BEAM | W/ PLATE |
| L45 | 24" I BEAM | W/ PLATE |
| L46 | 24" I BEAM | W/ PLATE |
| L47 | 24" I BEAM | W/ PLATE |
| L48 | 24" I BEAM | W/ PLATE |
| L49 | 24" I BEAM | W/ PLATE |
| L50 | 24" I BEAM | W/ PLATE |
| L51 | 24" I BEAM | W/ PLATE |
| L52 | 24" I BEAM | W/ PLATE |
| L53 | 24" I BEAM | W/ PLATE |
| L54 | 24" I BEAM | W/ PLATE |
| L55 | 24" I BEAM | W/ PLATE |
| L56 | 24" I BEAM | W/ PLATE |
| L57 | 24" I BEAM | W/ PLATE |
| L58 | 24" I BEAM | W/ PLATE |
| L59 | 24" I BEAM | W/ PLATE |
| L60 | 24" I BEAM | W/ PLATE |
| L61 | 24" I BEAM | W/ PLATE |
| L62 | 24" I BEAM | W/ PLATE |
| L63 | 24" I BEAM | W/ PLATE |
| L64 | 24" I BEAM | W/ PLATE |
| L65 | 24" I BEAM | W/ PLATE |
| L66 | 24" I BEAM | W/ PLATE |
| L67 | 24" I BEAM | W/ PLATE |
| L68 | 24" I BEAM | W/ PLATE |
| L69 | 24" I BEAM | W/ PLATE |
| L70 | 24" I BEAM | W/ PLATE |
| L71 | 24" I BEAM | W/ PLATE |
| L72 | 24" I BEAM | W/ PLATE |
| L73 | 24" I BEAM | W/ PLATE |
| L74 | 24" I BEAM | W/ PLATE |
| L75 | 24" I BEAM | W/ PLATE |
| L76 | 24" I BEAM | W/ PLATE |
| L77 | 24" I BEAM | W/ PLATE |
| L78 | 24" I BEAM | W/ PLATE |
| L79 | 24" I BEAM | W/ PLATE |
| L80 | 24" I BEAM | W/ PLATE |
| L81 | 24" I BEAM | W/ PLATE |
| L82 | 24" I BEAM | W/ PLATE |
| L83 | 24" I BEAM | W/ PLATE |
| L84 | 24" I BEAM | W/ PLATE |
| L85 | 24" I BEAM | W/ PLATE |
| L86 | 24" I BEAM | W/ PLATE |
| L87 | 24" I BEAM | W/ PLATE |
| L88 | 24" I BEAM | W/ PLATE |
| L89 | 24" I BEAM | W/ PLATE |
| L90 | 24" I BEAM | W/ PLATE |
| L91 | 24" I BEAM | W/ PLATE |
| L92 | 24" I BEAM | W/ PLATE |
| L93 | 24" I BEAM | W/ PLATE |
| L94 | 24" I BEAM | W/ PLATE |
| L95 | 24" I BEAM | W/ PLATE |
| L96 | 24" I BEAM | W/ PLATE |
| L97 | 24" I BEAM | W/ PLATE |
| L98 | 24" I BEAM | W/ PLATE |
| L99 | 24" I BEAM | W/ PLATE |
| L100 | 24" I BEAM | W/ PLATE |