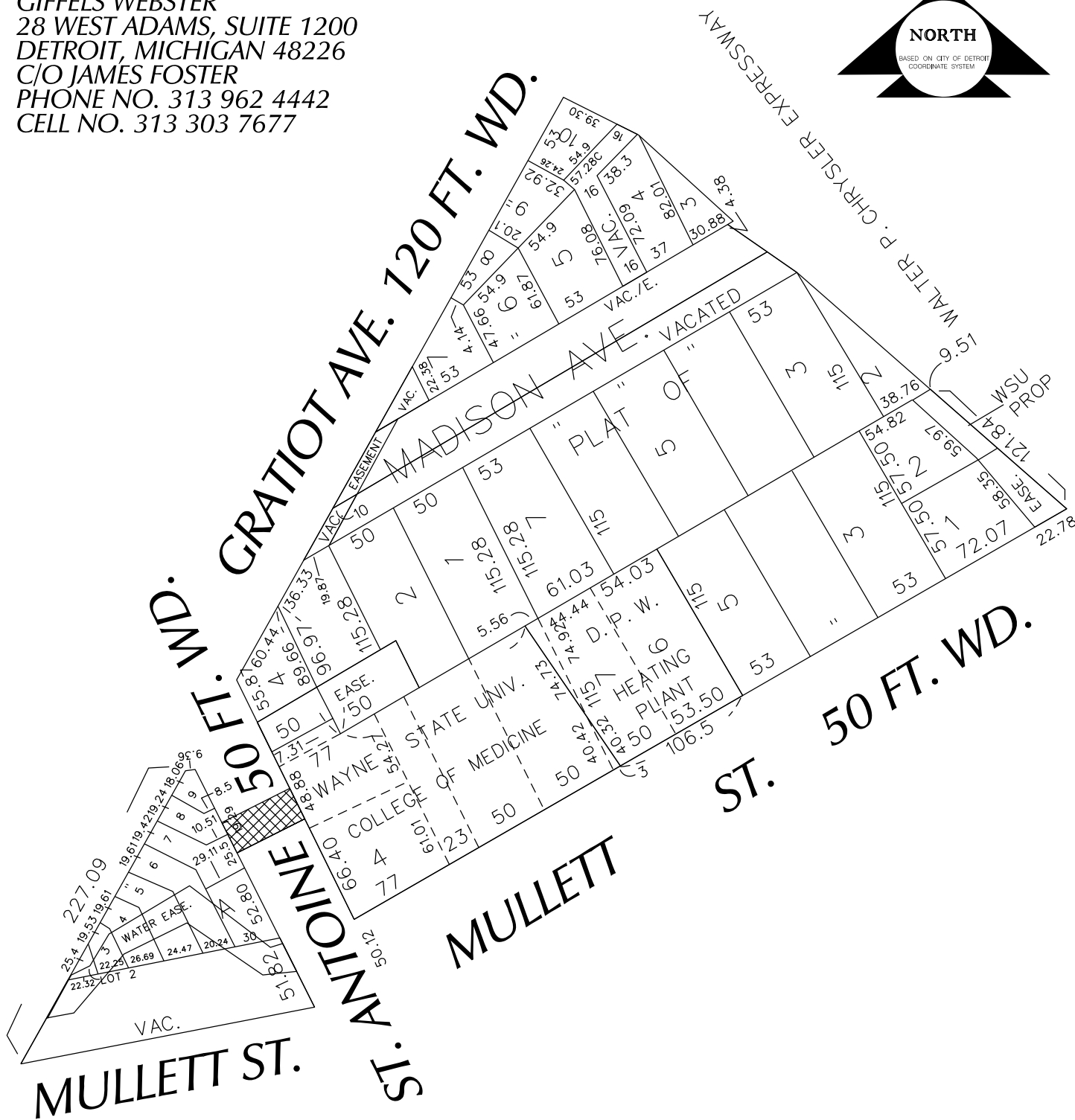


PETITION NO. 2718
 GIFFELS WEBSTER
 28 WEST ADAMS, SUITE 1200
 DETROIT, MICHIGAN 48226
 C/O JAMES FOSTER
 PHONE NO. 313 962 4442
 CELL NO. 313 303 7677



 - AREA OF ENCROACHMENT
 WITH TUNNEL 22 FEET BELOW GRADE

(FOR OFFICE USE ONLY)

CARTO 28 A

B					
A					
DESCRIPTION	DRWN	CHKD	APPD	DATE	
REVISIONS					
DRAWN BY	KSM		CHECKED		
DATE	3-22-13		APPROVED		

REQUEST ENCROACHMENT
 WITH TUNNEL 22 FEET BELOW GRADE
 INTO
 ST. ANTOINE
 140 SOUTH OF SOUTH LINE OF GRATIOT

CITY OF DETROIT
 CITY ENGINEERING DEPARTMENT
 SURVEY BUREAU

JOB NO. 01-01
 DRWG. NO. X2718.dgn