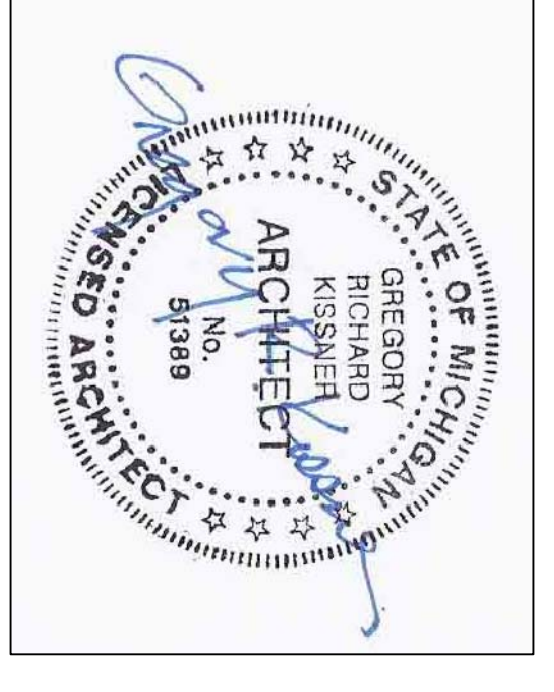


Client  
**MR. CHRIS CASTEEL,  
MSOP, CTO PROSTHETICS  
AND ORTHOTICS**

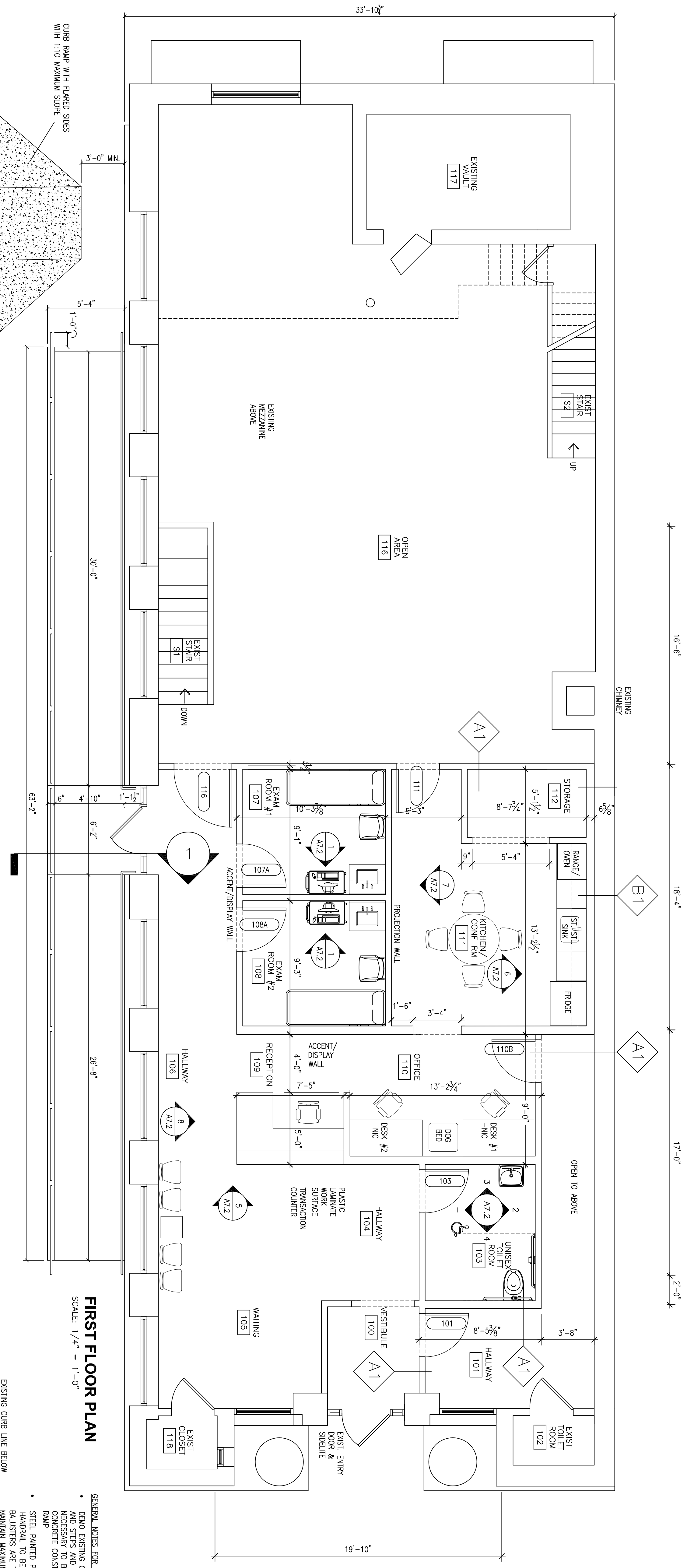


Project	6438 WOODWARD AVE RENOVATION PROJECT
Drawing Title	FIRST FLOOR PLAN
Project Number	20111158
Drawn By	TMR/RAMP BY GRK
Approved By	RH
Scale	AS NOTED
Project	6438 WOODWARD AVE RENOVATION PROJECT
RAMP REV.	2013.01.14
RAMP	2013.01.28
PERMITS	2012.11.30
SBS	2012.08.19
OWNER REVIEW	2012.08.07

- GENERAL NOTES FOR RAMPES**
- DEMO EXISTING CONCRETE WALK AND STEPS AND BRICKELL AS NECESSARY TO BEAR NEW CONCRETE CONSTRUCTION FOR RAMP
  - STEEL PAINTED PRE-PAINING POSTS AND BALUSTERS ARE TO BE 1 1/2" DIA. AND MAINTAIN MAXIMUM CLEARANCES OF 4" RAMP AND EXTEND 12" BEYOND TOP AND BOTTOM OF RAMP IN CONFIGURATION SHOWN
  - 6" DIA. VERTICAL POSTS 6" DEEP AT 5'-0" MAX. O.C. AND GROUP INTO 3" DIA. CORE
  - RAMP TO BE 4000PS CONCRETE RAMP 1:20 SLOPE-LIGHT BROOM FINISH
  - PROVIDE 2" HIGH X 6 X 2 WIDE CONCRETE CURB AT EDGE OF RAMP FOR EDGE PROTECTION

• CONTRACTOR TO PROVIDE APPROPRIATE TO ALL APPLICABLE CODES

**FIRST FLOOR PLAN**  
SCALE: 1/4" = 1'-0"



**RAMP ELEVATION**  
SCALE: 1/4" = 1'-0"

