

Transaction Report

Send
ERROR: Re-send error page(s).

No.	TX Date/Time	Destination	Duration	P. #	Result	Mode
746	NOV-26 11:09	913132241464		000	Busy	

5/20
TO PASUL

FAX TRANSMITTAL

Office of the City Clerk

Coleman A Young Municipal Center
Two Woodward Avenue, Suite 200
Detroit, Michigan 48226

Telephone: (313) 224-2070 Fax: (313) 224-2075

Monday, November 26, 2012

No. of Pages 8

FROM: *Mr. Andre Gilbert, Junior Assistant City Council Committee Clerk*

SUBJECT: *Petition #2619, DeWitt Products Company, Request to permanently park in berm area in front of Dewitt Products Company located at 5860 Plumer Street, Detroit MI. 48209.*

FAX TO THE FOLLOWING DEPARTMENT(S):

Mr. Richard Doherty, City Engineer

DPW - City Engineering Division

(313) 224-1484

City of Detroit
OFFICE OF THE CITY CLERK

Janice M. Winfrey
City Clerk

Vivian A. Hudson
Deputy City Clerk

DEPARTMENTAL REFERENCE COMMUNICATION

Monday, November 26, 2012

To: The Department or Commission Listed Below

From: Janice M. Winfrey, Detroit City Clerk

The following petition is herewith referred to you for report and recommendation to the City Council.

In accordance with that body's directive, kindly return the same with your report in duplicate within four (4) weeks.

DPW - CITY ENGINEERING DIVISION

2619 *DeWitt Products Company, Request to permanently park in berm area in front of Dewitt Products Company located at 5860 Plumer Street, Detroit MI. 48209.*



PRODUCTS COMPANY

5860 Plumer Street • Detroit, Michigan 48209
800-962-8599 • 313-554-0575 • Fax: 313-554-2171

USE THE BEST: ROOF COATINGS • ROOF CEMENTS • DRIVEWAY SEALERS • MEMBRANES • SEALANTS

10-27-12

Detroit City Clerk Office
2 Woodward Avenue
Suite 200
Detroit, MI 48226

City Clerks' office,

My name is Donald McClellan and I am with DeWitt Products. DeWitt Products is a Detroit Manufacturer of coatings for roofs and driveways since 1931. We recently celebrated 81 years of being in business at our only location at 5860 Plumer Street, Detroit, MI 48209. Over the 81 years, as our business continued to grow, we have had several opportunities to work with different departments within our City Government. Something's were not as easy to work through as others, but overall we have been able to work with the City to help us grow our business to keep good jobs right here in Detroit.

Unfortunately, this is not the current situation and is why I am reaching out to you to help us resolve our problem with the City traffic enforcement division. Since 1931, our employees and our Customers have parked close to our building for several reasons which include; **safety**, theft, semi truck traffic, and customer loading conveniences. Our buildings are in an unique location between residential, train tracks and a dead end/alley.

Over the years we have been parking on areas of our property that are paved that the traffic department is calling "berms". The enforcement officer claims they are too close to sidewalks even in areas where there are no sidewalks. Over a two day period we received several parking tickets and know of at least one vender who was ticketed and one customer who left in fear of getting a ticket. Six years ago we went through a similar situation and thought it was taken care of.

We would like to speak with someone within the City about getting the areas in question zoned so we can park. These areas are paved and are not grassy. With winter coming and daylight savings time ending soon, we would like to speak with someone as soon as possible. Please call me at your earliest convenience at 313=554-0575.

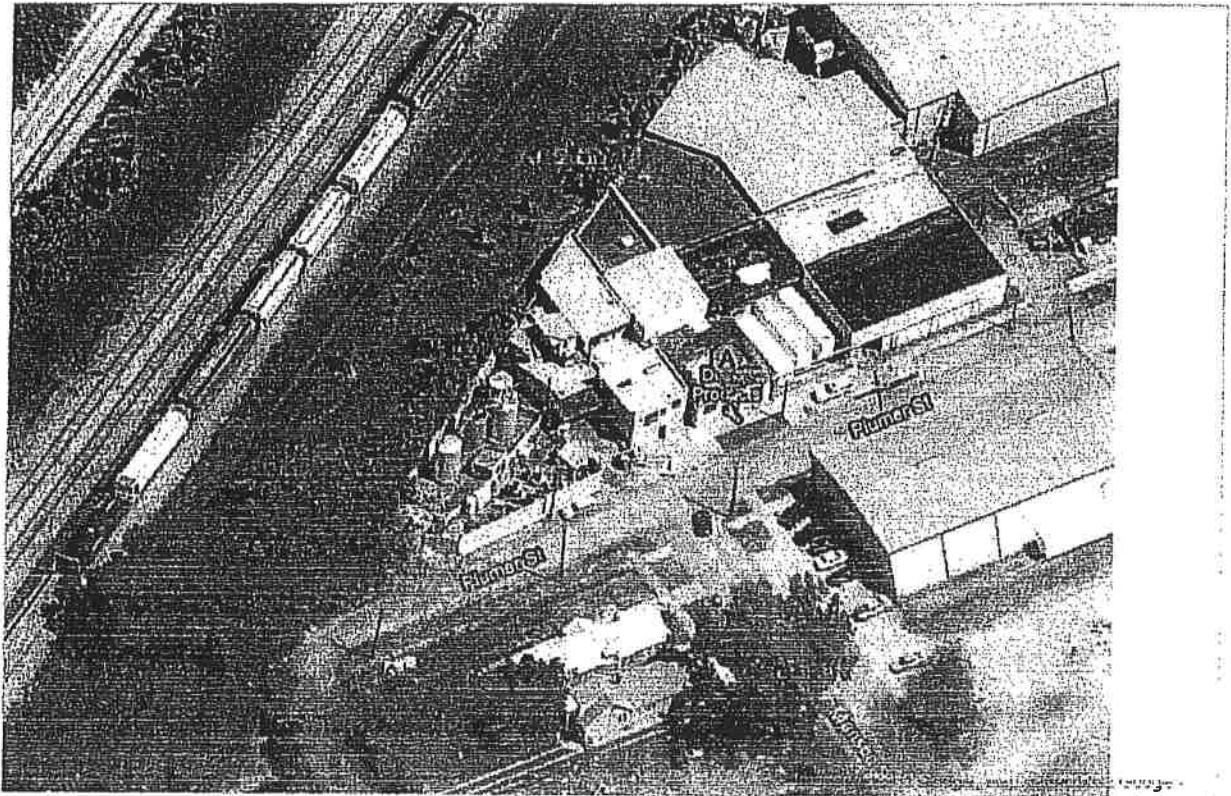
Sincerely,

Donald McClellan

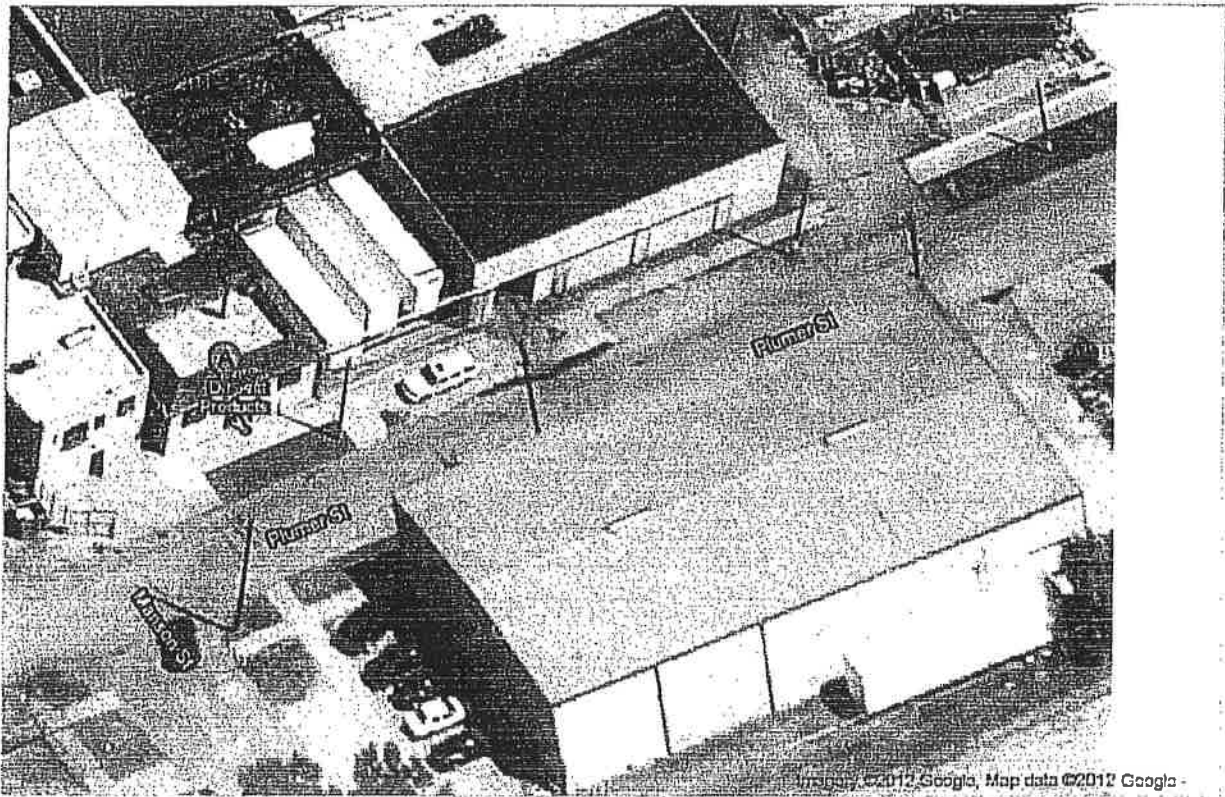
62 51 21 101 1

--1111111111--

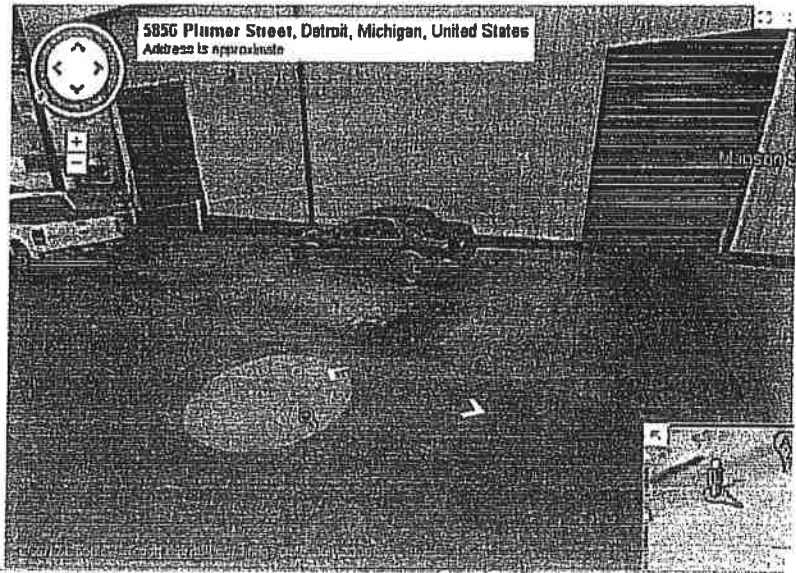
To see all the details that are visible on the screen, use the "Print" link next to the map.



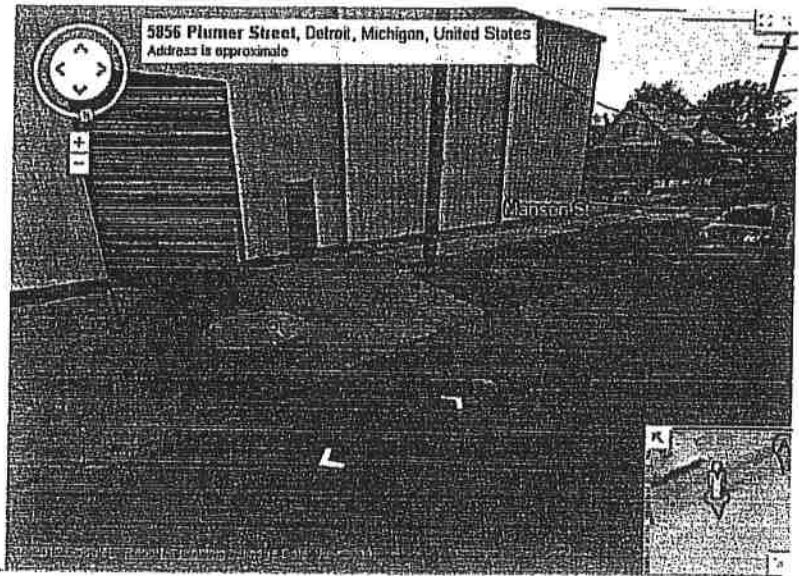
To see all the details that are visible on the screen, use the "Print" link next to the map.



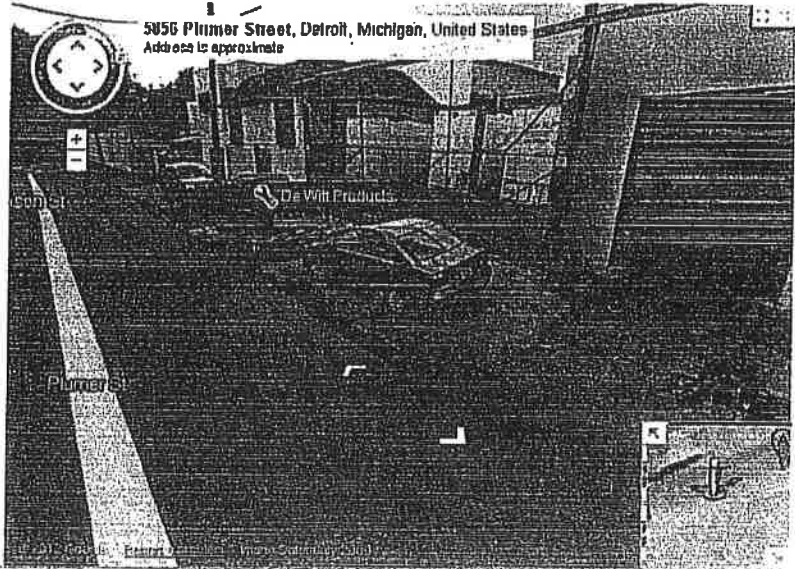
To see all the details that are visible on the screen, use the "Print" link next to the map.



To see all the details that are visible on the screen, use the "Print" link next to the map.



To see all the details that are visible on the screen, use the "Print" link next to the map.

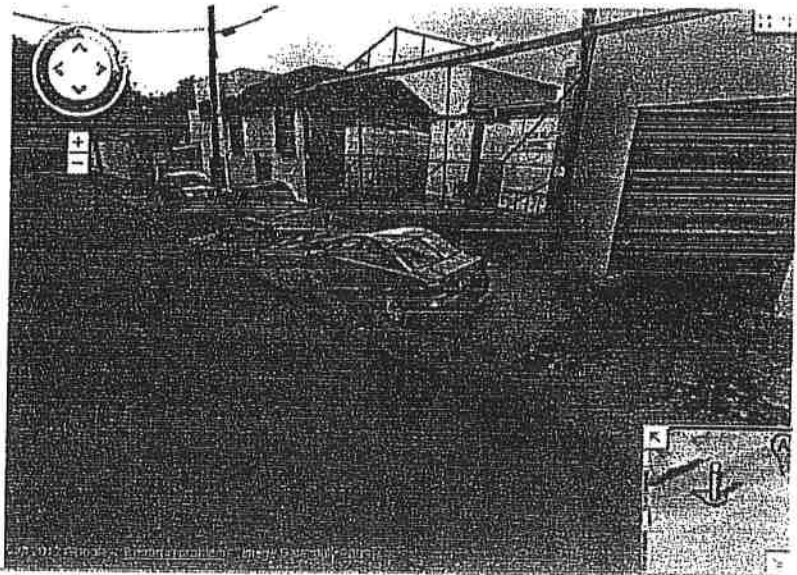


Detroit Manufacturer - Select local point - Find Manufacturer here. We offer local search in your city.

4J

Google

To use all the features that are visible on this page, you need Flash Player 10.0.0.26 or later.

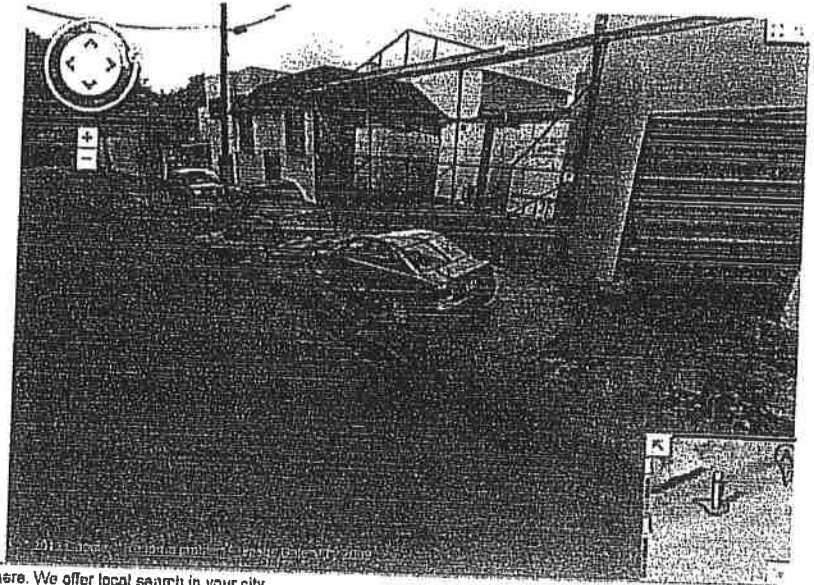


Detroit Manufacturer - detroitlocal.com - Find Manufacturer here. We offer local search in your city.

Ad

Google

To use all the features of our services you need to be logged in to your Google account.



Detroit Manufacturer - Detroit (local area) - Find Manufacturer here. We offer local search in your city.

AJ

DEPARTMENTAL REFERENCE COMMUNICATION

Monday, November 26, 2012

To: The Department or Commission Listed Below

From: Janice M. Winfrey, Detroit City Clerk

The following petition is herewith referred to you for report and recommendation to the City Council.

In accordance with that body's directive, kindly return the same with your report in duplicate within four (4) weeks.

DPW - CITY ENGINEERING DIVISION BUILDINGS & SAFETY ENGINEERING
MUNICIPAL PARKING DEPARTMENT

2619 *DeWitt Products, Request to have areas of land around business zoned for allowed parking*

