

City of Detroit  
OFFICE OF THE CITY CLERK

Janice M. Winfrey  
City Clerk

Vivian A. Hudson  
Deputy City Clerk

RECEIVED OCT 29 2012

DEPARTMENTAL REFERENCE COMMUNICATION

Monday, October 22, 2012

To: *The Department or Commission Listed Below*

From: *Janice M. Winfrey, Detroit City Clerk*

---

The following petition is herewith referred to you for report and recommendation to the City Council.

In accordance with that body's directive, kindly return the same with your report in duplicate within four (4) weeks.

---

PLANNING AND DEVELOPMENT DEPARTMENT    DPW - CITY ENGINEERING DIVISION

**2599**    *Nailah, LLC, to vacate and convert to easement the east-west alley in the block bounded by St. Antoine, I-75 Service drive, Ferry and Kirby.*

Rec'd  
10/25/12  
OH

30A  
361

TEN/CEL

NAILAH, L.L.C.  
421 E. Ferry Street  
Detroit, MI 48202

October 15, 2012

Honorable City Council  
ATTN: Office of The City Clerk  
200 Coleman A. Young Municipal Center  
2 Woodward Avenue  
Detroit, Michigan 48226

RE: Nailah LLC request to vacate and convert to easement the east-west alley in the block bounded by St. Antoine, I-75 Service Drive, Ferry and Kirby.

Dear Honorable Council Members:

Nailah LLC has been successful in the restoration of several historic structures along East Ferry. I have also constructed new buildings with the same fundamental historic nature in the same area. The development of this site will be a continuation of my dedication to the restoration of once-blighted undeveloped areas. My goal is to help re-establish this Art Center neighborhood to its previous historic splendor.

Nailah, LLC has partnered with the Midtown Detroit, Inc to develop a 58 unit affordable housing project, Nailah Townhomes, in the East Ferry Historic District in Detroit. We are writing to Council for the purpose of requesting the vacation and conversion to utility easement of the east-west public alley, 20 feet wide, in the block bounded by St. Antoine St., I-75 Service Drive, E. Ferry Ave. and E. Kirby Ave.

This request to close the alley is necessary to provide access to the proposed parking lots servicing the units. Our intent is to improve the alley and leave it open at each end so that it does not restrict access to other owners and utility companies.

If you should have any questions, please do not hesitate to contact me at 313-363-9485

Respectfully,



Julio Bateau, Managing Partner  
Nailah, LLC

CC: Site Plan, Elevation  
Reference: Petion No. 2351

ST. ANTOINE

50

~~NORTH~~

50	8	161.53	20	161.53	7	50
"	32					"
"	8				3	"
50	34				4	50
EAST 1/2	5					
	2					

ALLEY

20

161.53

E. FERRY

46.16	16	46.18	20	161.53	7	46.16
48						48
"	14				3	"
"						"
"	12				5	"
"						"
"	10				7	"
48	9	161.53	20	161.53	8	48

70

BE

VACATED

E. WRBY

I-75 SOUTH SER. DRIVE

Density

FERRY AVENUE

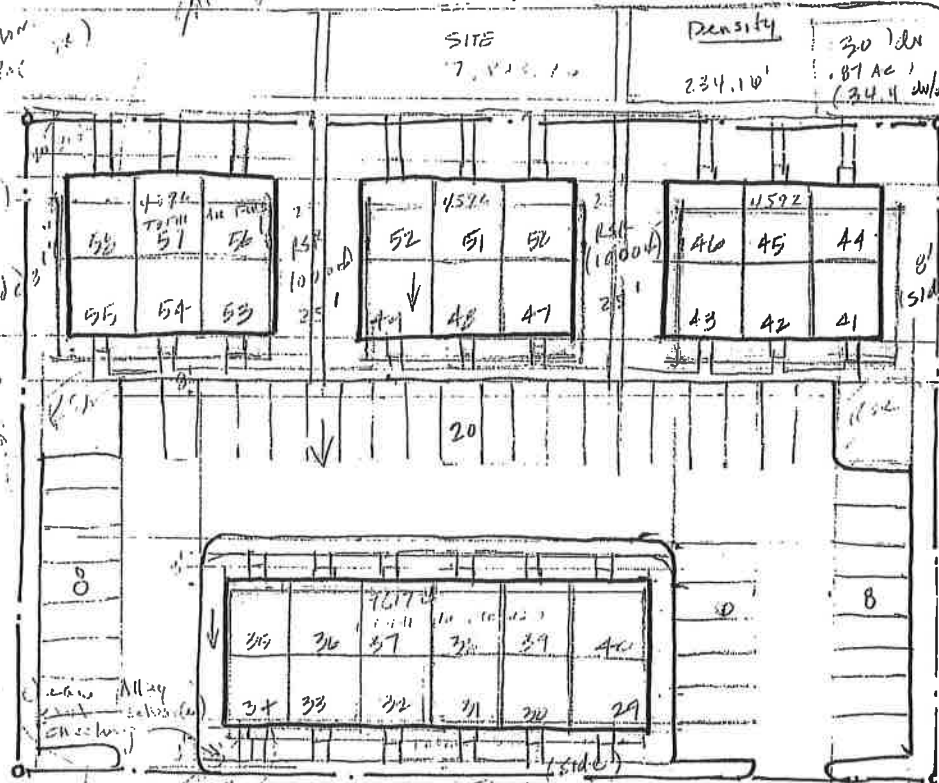
2015 x 23,342 = 1988 ft<sup>2</sup>  
Reqd  
2000 lb

SITE

Density

30 DU  
.87 AC  
(34.4 du/AC)

234.10'

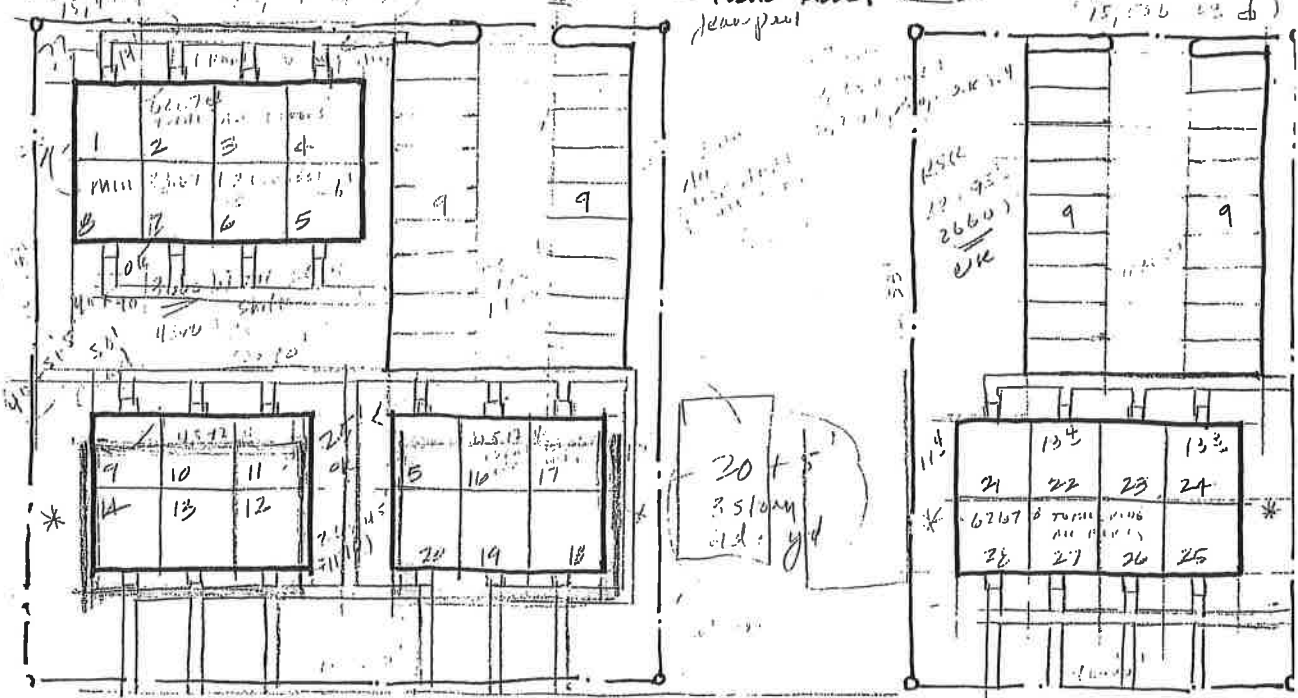


\* Check at Tony  
glass in general  
Multi-family

**LEGEND**

- 58 UNITS
- 4.4 @ 1BRM
- 1.4 @ 2BR
- PARKING PROVIDED 730

PARKING REQ'D  
58 x 1.25 = 730



**SITE PLAN 1"=30'-0"**

Density 20 DU  
.63 AC  
34.1 du/AC

KIRBY AVENUE

NAILAH, LLC

Alexander I. Bogdanov + Assoc. Architects

8.3.2012

Density

20 DU  
.63 AC  
34.1 du/AC

NORTH

\* Side Terrace

PETITION NO. 2599  
 NAILAH, L.L.C.  
 421 E. FERRY STREET  
 DETROIT, MICHIGAN 48202  
 C/O JULIO BATEAU  
 PHONE NO. 313 363 9485



**ST. ANTOINE 50 FT. WD.**

"RICHARD ALLEN ST." - SECONDARY STREET SIGN  
 BETW. E. WARREN AND THE FORD FWY.  
 2-11-87 J.C.C. PGS. 312-13

50	7	"	"	50	46.16	48	"	"	"	"	48	
161.53	161.53	3	4	161.53	161.53	7	OF	BLKS	G.	H.	I.	J.
161.53	161.53	8	5	46.18	46.18	2	3	5	7	7	8	8
161.53	161.53	32	34	46.18	46.18	16	14	12	10	9	9	9
50	"	"	EAST 1/2	P.C.5	46.21	48	"	"	"	"	"	48
161.53	161.53	"	"	"	"	"	"	AND	"	"	"	"

**KIRBY AVE. 80 FT. WD.**

**WALTER P. CHRYSLER X-WAY**



- AREA OF EASEMENT

(FOR OFFICE USE ONLY)

CARTO 30 A

B					
A					
DESCRIPTION		DRWN	CHKD	APPD	DATE
REVISIONS					
DRAWN BY		CHECKED			
DATE		APPROVED			
3-20-13					

**REQUEST CONVERSION TO EASEMENT  
 THE 20 FOOT WIDE E/W ALLEY  
 IN THE AREA BOUND BY  
 ST. ANTOINE, FERRY, I-75  
 AND KIRBY**

<b>CITY OF DETROIT</b>	
CITY ENGINEERING DEPARTMENT	
SURVEY BUREAU	
JOB NO.	01-01
DRWG. NO.	X2599.dgn