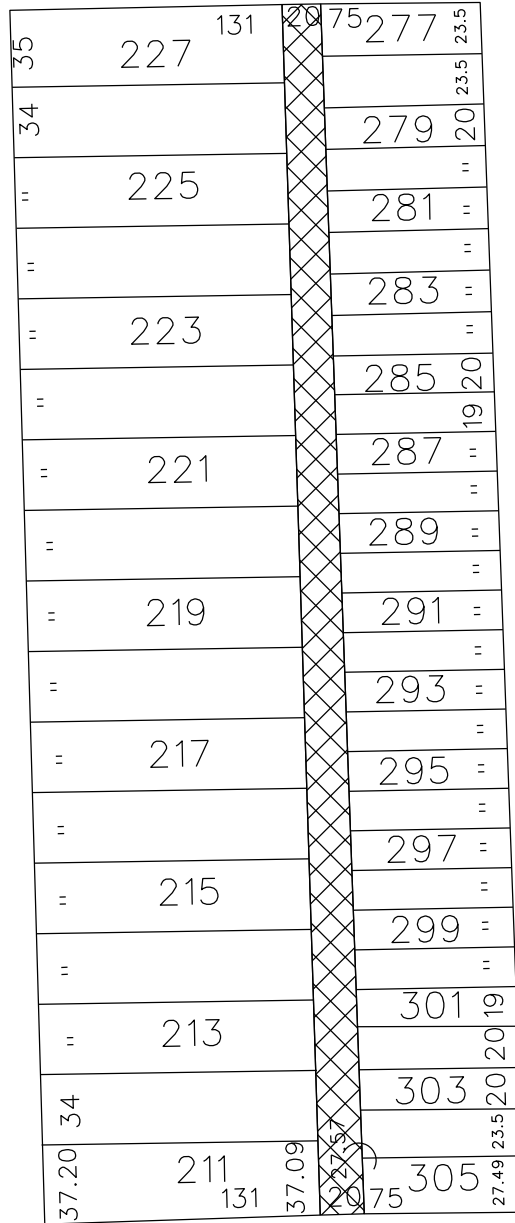


PETITION NO. 2532  
 ARCHITECTS INTERNATIONAL, INC.  
 17400 WILDEMERE  
 DETROIT, MICHIGAN 48221  
 C/O TED BERLINGHOF  
 PHONE NO. 313 341 7930



**RADCLIFF AVE. 50 FT. WD.**

**WINTHROP AVE. 50 FT. WD.**



**GREENFIELD AVE. 106 FT. WD.**

**PAUL AVE. 63 FT. WD.**



- AREA OF TEMPORARY CLOSURE

(FOR OFFICE USE ONLY)

CARTO 98 A

B					
A					
DESCRIPTION		DRWN	CHKD	APPD	DATE
REVISIONS					
DRAWN BY		CHECKED			
DATE		APPROVED			
KSM					
10-24-12					

**REQUEST TEMPORARY CLOSURE  
 OF 20 WD. N/S ALLEY  
 IN BLOCK BOUND BY  
 PAUL, WINTHROP, RADCLIFF  
 AND GREENFIELD**

CITY OF DETROIT CITY ENGINEERING DEPARTMENT SURVEY BUREAU	
JOB NO.	01-01
DRWG. NO.	X2532.dgn