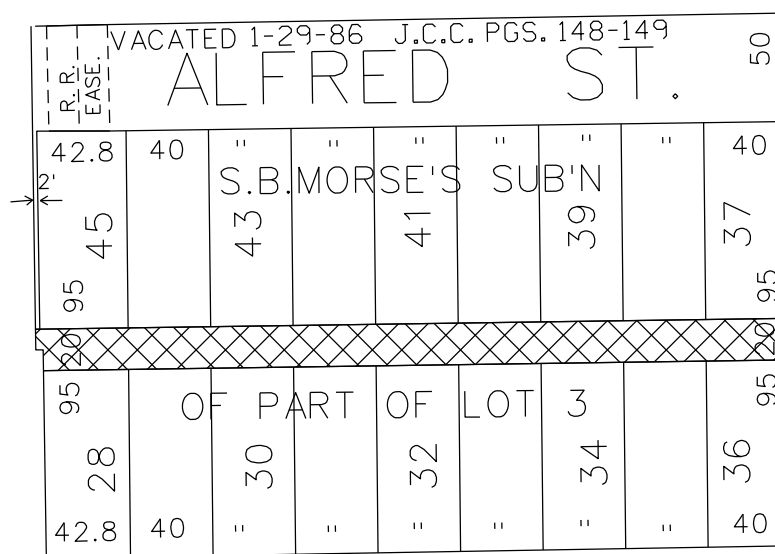


PETITION NO. 2530  
 BERTS MARKET PLACE  
 2727 RUSSELL  
 DETROIT, MICHIGAN 48207  
 C/O BERT DERING  
 PHONE NO. 313 414 4848



RIVARD ST. 50 FT. WD.



RUSSELL ST. 86 FT. WD.

DIVISION ST. 50 FT. WD.



- AREA OF EASEMENT

(FOR OFFICE USE ONLY)

CARTO 39 D

B					
A					
DESCRIPTION	DRWN	CHKD	APPD	DATE	
REVISIONS					
DRAWN BY	KSM		CHECKED		
DATE	10-30-12		APPROVED		

REQUEST CONVERSION TO EASEMENT  
 20 FT. WD. E/W ALLEY  
 IN AREA  
 NORTH OF DIVISION STREET  
 BETWEEN  
 RUSSELL, AND RIVARD

CITY OF DETROIT CITY ENGINEERING DEPARTMENT SURVEY BUREAU	
JOB NO.	01-01
DRWG. NO.	X2530.dgn