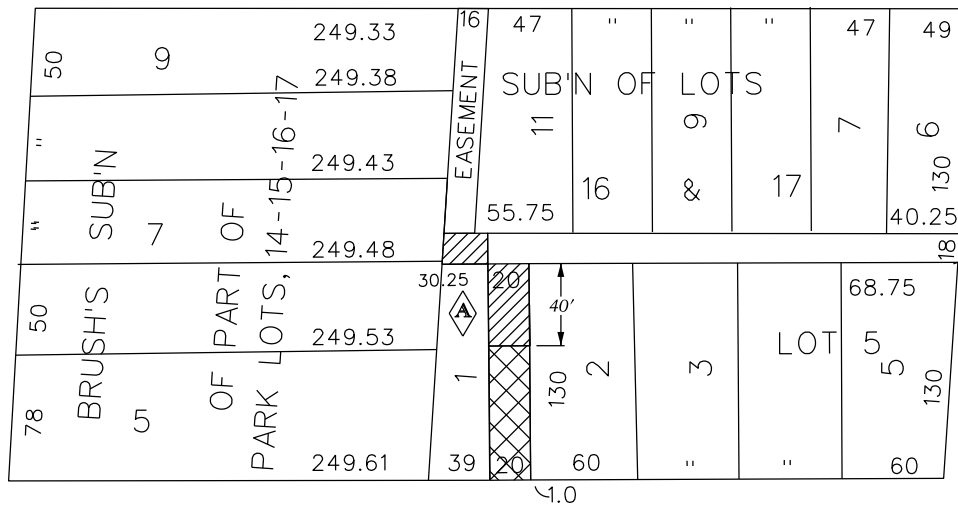


PETITION NO. 2417  
 INVEST DETROIT  
 600 RENAISSANCE  
 SUITE 1710  
 DETROIT, MICH. 48243  
 C/O DAVID BLASZKIEWICZ  
 PHONE NO. 313 259 6368



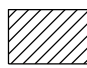

WOODWARD 120 FT. WD.

ERSKINE ST. 60 FT. WD.



JOHN R. ST. 60 FT. WD.

WATSON ST. 50 FT. WD.

-  - AREA OF VEHICULAR EASEMENT
-  - AREA OF EASEMENT

(FOR OFFICE USE ONLY)

CARTO 29 B

<b>B</b>					
<b>A</b>	ADDED AREA OF VEHICULAR EASEMENT	K.S.M.			8/15/13
<b>REVISIONS</b>					
<b>DESCRIPTION</b>	<b>DRWN</b>	<b>CHKD</b>	<b>APPD</b>	<b>DATE</b>	
<b>DRAWN BY</b>	<b>CHECKED</b>				
<b>DATE</b>	<b>APPROVED</b>				

REQUEST TO CONVERT TO EASEMENT  
 THE SOUTH 90 FT. OF THE 20 FT WD. N/S ALLEY  
 AND CONVERT TO VEHICULAR EASEMENT  
 THE NORTH 40 FT. OF THE 20 FT. WD. N/S ALLEY  
 AND PART OF THE 18 FT. WD. E/W ALLEY  
 IN THE AREA BOUND BY  
 ERSKINE, JOHN R., WATSON  
 AND WOODWARD

<b>CITY OF DETROIT</b>	
CITY ENGINEERING DEPARTMENT	
SURVEY BUREAU	
<b>JOB NO.</b>	01-01
<b>DRWG. NO.</b>	X 2417