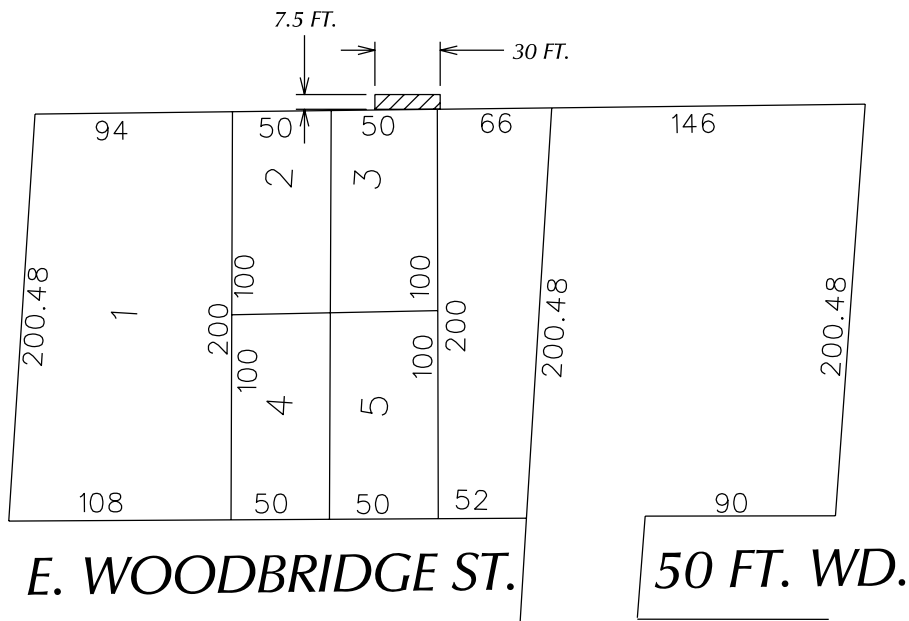


PETITION NO. 2410
 JEFFERSON CHEVROLET
 2130 EAST JEFFERSON AVE.
 DETROIT, MICHIGAN 48207
 C/O VINCENT CATALDO
 of INFUZ LIMITED ARCHITECTURE
 PHONE NO. 810 367 8835



E. JEFFERSON AVE. 120 FT. WD.

ST AUBIN AVE. 72 FT. WD.



DUBOIS ST. 42 FT. WD.



- AREA OF ENCROACHMENT
 (With Signage)

(FOR OFFICE USE ONLY)

CARTO 38 E

B					
A					
DESCRIPTION	DRWN	CHKD	APPD	DATE	
REVISIONS					
DRAWN BY	KSM		CHECKED		
DATE	7-19-12		APPROVED		

**REQUEST TO ENCROACH
 INTO JEFFERSON AVE.
 (7'6" With Signage)
 At 2130 JEFFERSON**

CITY OF DETROIT CITY ENGINEERING DEPARTMENT SURVEY BUREAU	
JOB NO.	01-01
DRWG. NO.	X2410.dgn