

PETITION NO. 2333  
 ROXBURY BLOCK CLUB  
 10425 ROXBURY  
 DETROIT, MICHIGAN 48224  
 C/O ANDREA ALLEN  
 PHONE NO. 313 736 1964

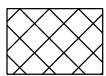
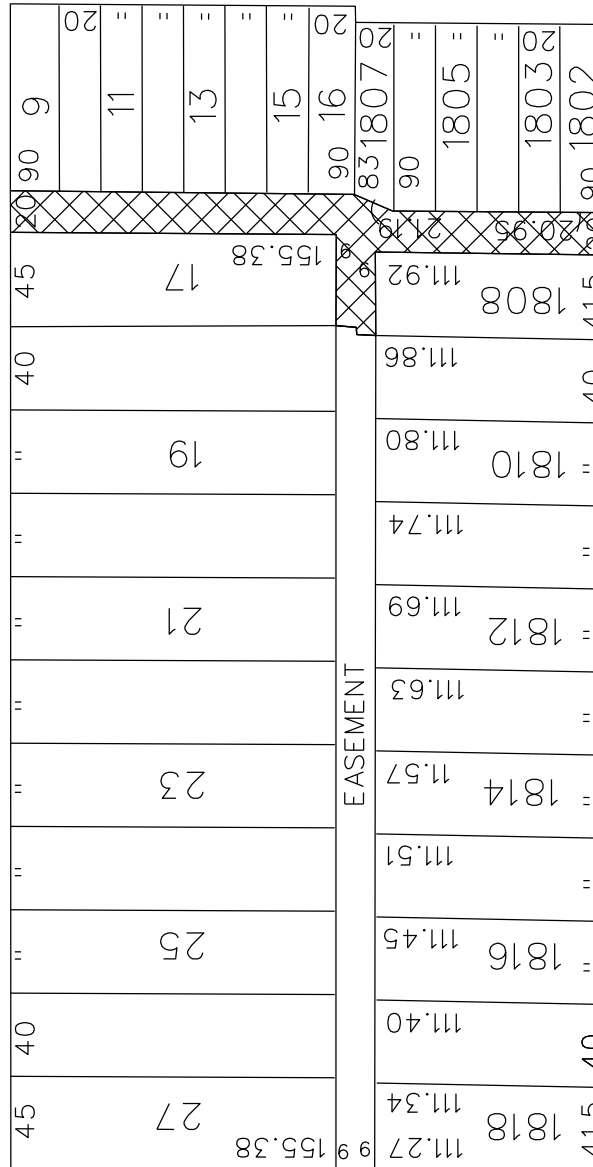


WHITTIER AVE. 86 FT.WD.

LAKEPOINTE AVE. 60 FT. WD.

ROXBURY AVE. 60 FT. WD.

COURVILLE AVE. 60 FT.WD.



- AREA OF EASEMENT

(FOR OFFICE USE ONLY)

CARTO 97 D

REQUEST CONVERSION TO EASEMENT  
 THE 20 FT. WIDE E/W ALLEY  
 AND THE 18 FT. WD. N/S ALLEY  
 BEHIND LOTS 17 AND 1808  
 IN THE AREA BOUND BY  
 WHITTIER, ROXBURY, COURVILLE  
 AND LAKEPOINTE

CITY OF DETROIT  
 CITY ENGINEERING DEPARTMENT  
 SURVEY BUREAU  
 JOB NO. 01-01  
 DRWG. NO. X2333.dgn

B					
A					
DESCRIPTION	DRWN	CHKD	APPD	DATE	
REVISIONS					
DRAWN BY	KSM		CHECKED		
DATE	9-7-12		APPROVED		