

City of Detroit  
OFFICE OF THE CITY CLERK

Janice M. Winfrey  
City Clerk

Vivian A. Hudson  
Deputy City Clerk

**DEPARTMENTAL REFERENCE COMMUNICATION**

*Monday, March 05, 2012*

*To: The Department or Commission Listed Below*

*From: Janice M. Winfrey, Detroit City Clerk*

---

The following petition is herewith referred to you for report and recommendation to the City Council.

In accordance with that body's directive, kindly return the same with your report in duplicate within four (4) weeks.

---

DPW - CITY ENGINEERING DIVISION      PLANNING AND DEVELOPMENT DEPARTMENT

**2240**      *SDG Architects and Planners, requests encroachment into the right-of-way of Yzerman Drive*

SDG

Architects + Planners

#2240

February 10, 2012

Detroit City Council  
1340 Coleman A. Young Municipal Center  
Two Woodward Avenue,  
Detroit, MI 48226

Re: **PETITION**  
of Detroit Regional Convention Facility Authority  
for **COBO CENTER**  
Petition for Street Encroachment

FEB 12 11 01

CITY CLERK

Dear Honorable Body:

On the instructions of the Detroit Regional Convention Facility Authority, we are hereby submitting this petition for street encroachment as described below and illustrated on the attached drawings.

On July 19<sup>th</sup>, 2011 your Honorable Body approved a special district review for major modifications to Cobo Center. The approved location and design of exterior changes included a second truck ramp accessing Cobo Center's loading dock from Yzerman Drive. This second truck ramp is crucial to maintaining ongoing operations of Cobo Center by eliminating the vulnerability from only having a single ramp access (from Congress) to all operational areas. In addition to eliminating Cobo Center's vulnerability, the second truck ramp will significantly improve the efficiency for its customers and thereby improve Cobo Center's competitiveness nationally.

#### **YZERMAN DRIVE**

The Detroit Regional Convention Facility Authority hereby requests encroachment into the right-of-way of Yzerman Drive for a truck ramp as shown on the attached drawings. The ramp will start at street level as a reinforced earth structure and rise up until the truck ramp is approximately 12'-0" above street level when it will change into a steel framed concrete bridge structure crossing Yzerman Drive and connecting to the south side of the existing Cobo Center truck dock at a height approximately 24'-0" above street level. The clear height crossing Yzerman Drive will be a minimum of 14'-6". It should be noted that further east existing Cobo Center spans Yzerman Drive with a clear height of 13'-8".

615 Griswold  
Ford Building  
Suite 103  
Detroit, Michigan 48226  
(313) 961-9000  
Fax: (313) 964-3233

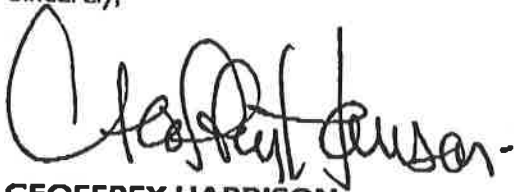
The bridge structure will be supported on steel girders that rest on columns outside the street vehicle travel area but on the right of way and/or City of Detroit property (Cobo Center property not transferred to the Detroit Regional Convention Facility Authority).

Bridge foundations will be driven piles or caissons drilled to a depth of approximately 100 feet below grade as determined by a geotechnical investigation.

The Detroit Regional Convention Facility Authority hereby commits to pay the reasonable costs for all necessary utility relocations resulting from these encroachments.

The proposed truck ramp is adjacent to the Detroit People Mover guideway and the Authority's design team is working with the Detroit People Mover and its consultants on finalizing a design that will not negatively impact the Detroit People Mover.

Sincerely,



**GEOFFREY HARRISON**

**Principal**

Contact Person – Tel: 313 961-9000 extension 109

E-Mail: [gharrison@sdg-assoc.com](mailto:gharrison@sdg-assoc.com)

Fax: 313 964-3233

TRUE COPY CERTIFICATE

STATE OF MICHIGAN, }  
City of Detroit } ss.

CITY CLERK'S OFFICE, DETROIT

I, Janice M. Winfrey, City Clerk of the City of Detroit, in said State, do hereby certify that the annexed paper is a TRUE COPY OF RESOLUTION

adopted (passed) by the City Council at session of

July 19, 2011

and approved by Mayor

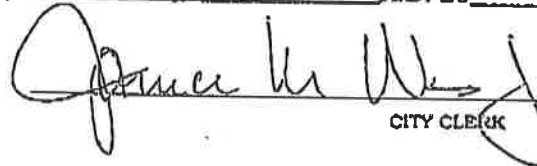
July 26, 2011

as appears from the Journal of said City Council in the office of the City Clerk of Detroit, aforesaid; that I have compared the same with the original, and the same is a correct transcript therefrom, and of the whole of such original.

In Witness Whereof, I have hereunto set my hand and affixed the corporate seal of said City, at

Detroit, this 3rd

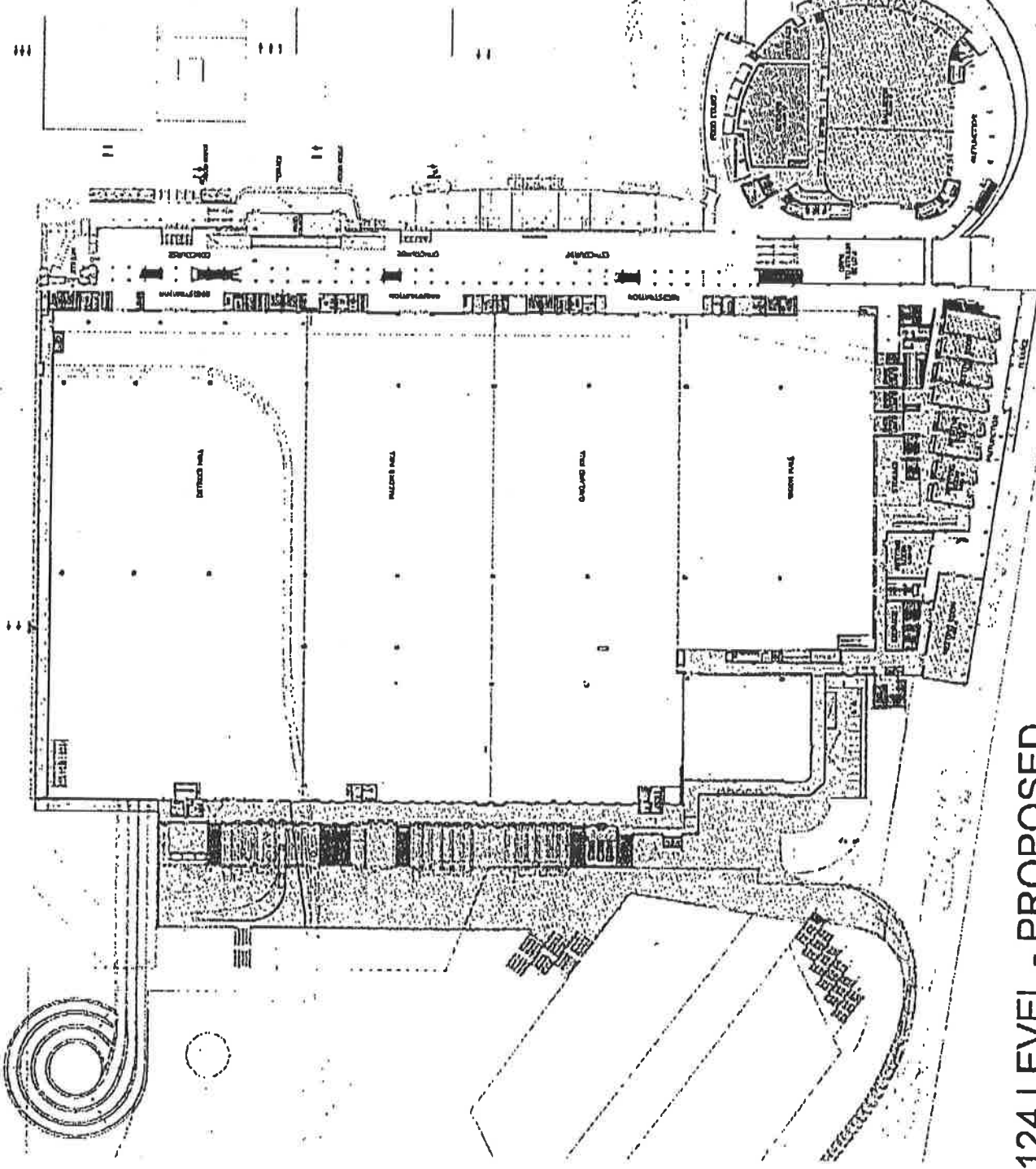
day of August A.D. 2011

  
CITY CLERK

13 14 15 16 17 18 19 20 21 22 23 24 25 26 27 28 29 30 31 32 33 34 35 36 37 38 39 40 41 42 43 44 45 46 47 48 49 50 51 52 53 54 55 56 57 58 59 60 61 62 63 64 65 66 67 68 69 70 71 72 73 74 75 76 77 78 79 80 81 82 83 84 85 86 87 88 89 90 91 92 93 94 95 96 97 98 99 100

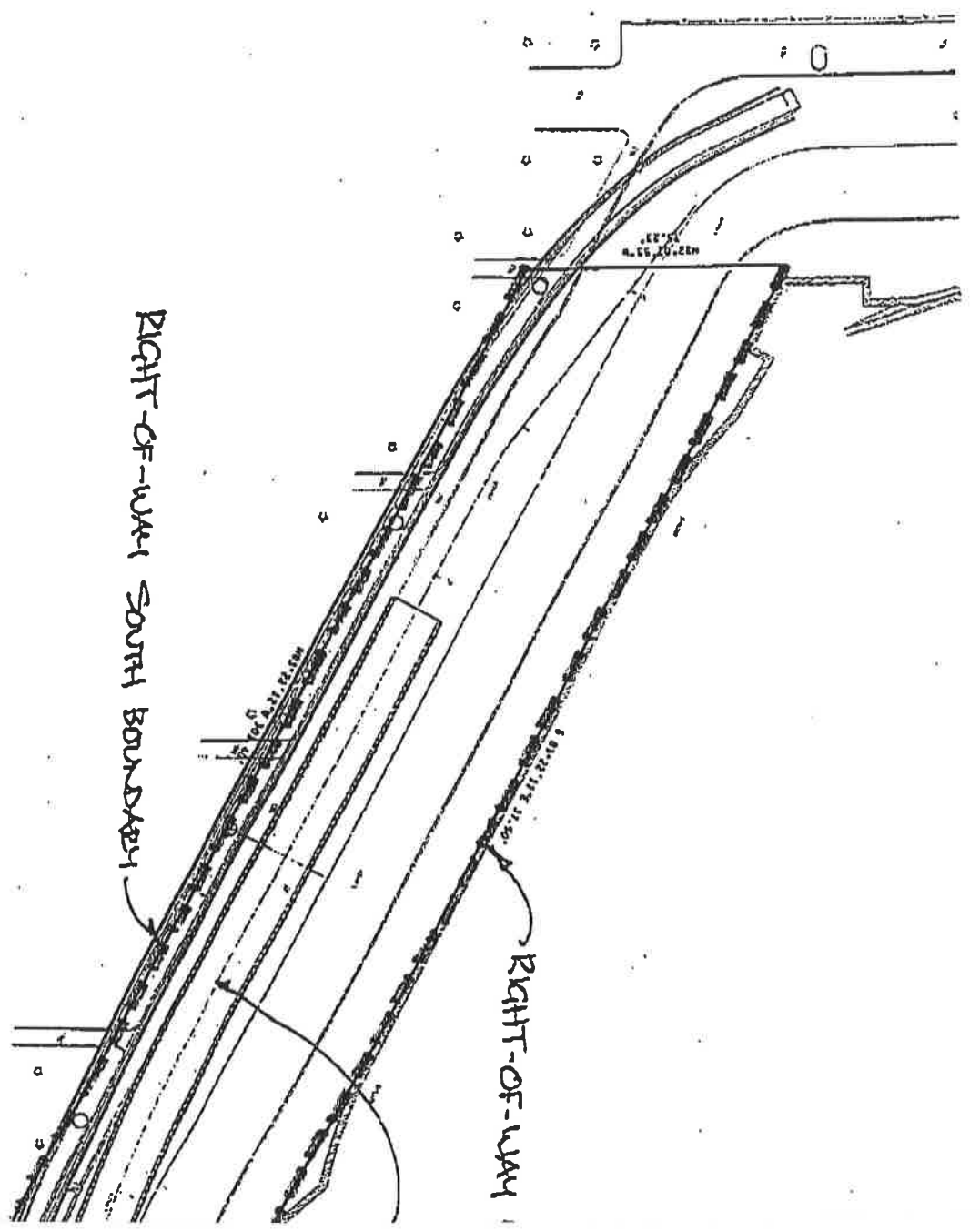
**COLOR LEGEND**

	PUBLIC CIRCULATION
	LOBBY HALL
	MEETING ROOM
	RESTAURANT
	PUBLIC VERTICAL CIRCULATION
	PUBLIC RESTROOM
	MEAN
	BACK OF HOUSE
	BACK OF HOUSE CIRCULATION
	SERVICE ELEVATOR/COT SIGN
	MECHANICAL
	TERRACE/PAVILION
	LOADING DOCK
	ROAD/PARKING
	POUHE



124 LEVEL - PROPOSED

COBO CENTER SECOND TRUCK RAMP



February 10, 2012

Detroit City Council  
1340 Coleman A. Young Municipal Center  
Two Woodward Avenue,  
Detroit, MI 48226

Re: **PETITION**  
of Detroit Regional Convention Facility Authority  
for **COBO CENTER**  
Petition for Street Encroachment

PETITION  
RECEIPT

10 FEB 12 11:01

---CITY CLERK---

Dear Honorable Body:

On the instructions of the Detroit Regional Convention Facility Authority, we are hereby submitting this petition for street encroachment as described below and illustrated on the attached drawings.

On July 19<sup>th</sup>, 2011 your Honorable Body approved a special district review for major modifications to Cobo Center. The approved location and design of exterior changes included a second truck ramp accessing Cobo Center's loading dock from Yzerman Drive. This second truck ramp is crucial to maintaining ongoing operations of Cobo Center by eliminating the vulnerability from only having a single ramp access (from Congress) to all operational areas. In addition to eliminating Cobo Center's vulnerability, the second truck ramp will significantly improve the efficiency for its customers and thereby improve Cobo Center's competitiveness nationally.

### **YZERMAN DRIVE**

The Detroit Regional Convention Facility Authority hereby requests encroachment into the right-of-way of Yzerman Drive for a truck ramp as shown on the attached drawings. The ramp will start at street level as a reinforced earth structure and rise up until the truck ramp is approximately 12'-0" above street level when it will change into a steel framed concrete bridge structure crossing Yzerman Drive and connecting to the south side of the existing Cobo Center truck dock at a height approximately 24'-0" above street level. The clear height crossing Yzerman Drive will be a minimum of 14'-6". It should be noted that further east existing Cobo Center spans Yzerman Drive with a clear height of 13'-8".

615 Griswold  
Ford Building  
Suite 103  
Detroit, Michigan 48226  
(313) 961-9000  
Fax: (313) 964-3233

February 10, 2012

Detroit City Council  
1340 Coleman A. Young Municipal Center  
Two Woodward Avenue,  
Detroit, MI 48226

Re: **PETITION**  
of Detroit Regional Convention Facility Authority  
for **COBO CENTER**  
Petition for Street Encroachment

Dear Honorable Body:

On the instructions of the Detroit Regional Convention Facility Authority, we are hereby submitting this petition for street encroachment as described below and illustrated on the attached drawings.

On July 19<sup>th</sup>, 2011 your Honorable Body approved a special district review for major modifications to Cobo Center. The approved location and design of exterior changes included a second truck ramp accessing Cobo Center's loading dock from Yzerman Drive. This second truck ramp is crucial to maintaining ongoing operations of Cobo Center by eliminating the vulnerability from only having a single ramp access (from Congress) to all operational areas. In addition to eliminating Cobo Center's vulnerability, the second truck ramp will significantly improve the efficiency for its customers and thereby improve Cobo Center's competitiveness nationally.

### **YZERMAN DRIVE**

The Detroit Regional Convention Facility Authority hereby requests encroachment into the right-of-way of Yzerman Drive for a truck ramp as shown on the attached drawings. The ramp will start at street level as a reinforced earth structure and rise up until the truck ramp is approximately 12'-0" above street level when it will change into a steel framed concrete bridge structure crossing Yzerman Drive and connecting to the south side of the existing Cobo Center truck dock at a height approximately 24'-0" above street level. The clear height crossing Yzerman Drive will be a minimum of 14'-6". It should be noted that further east existing Cobo Center spans Yzerman Drive with a clear height of 13'-8".

615 Griswold  
Ford Building  
Suite 103  
Detroit, Michigan 48226  
(313) 961-9000  
Fax: (313) 964-3233



The bridge structure will be supported on steel girders that rest on columns outside the street vehicle travel area but on the right of way and/or City of Detroit property (Cobo Center property not transferred to the Detroit Regional Convention Facility Authority).

Bridge foundations will be driven piles or caissons drilled to a depth of approximately 100 feet below grade as determined by a geotechnical investigation.

The Detroit Regional Convention Facility Authority hereby commits to pay the reasonable costs for all necessary utility relocations resulting from these encroachments.

The proposed truck ramp is adjacent to the Detroit People Mover guideway and the Authority's design team is working with the Detroit People Mover and its consultants on finalizing a design that will not negatively impact the Detroit People Mover.

Sincerely,



**GEOFFREY HARRISON**

**Principal**

Contact Person – Tel: 313 961-9000 extension 109

E-Mail: [gharrison@sdg-assoc.com](mailto:gharrison@sdg-assoc.com)

Fax: 313 964-3233

TRUE COPY CERTIFICATE

STATE OF MICHIGAN, }  
City of Detroit } ss.

CITY CLERK'S OFFICE, DETROIT

I, Janice M. Winfrey, City Clerk of the City of Detroit, in said State, do hereby certify that the annexed paper is a TRUE COPY OF RESOLUTION adopted (passed) by the City Council at session of

July 19, 2011

and approved by Mayor

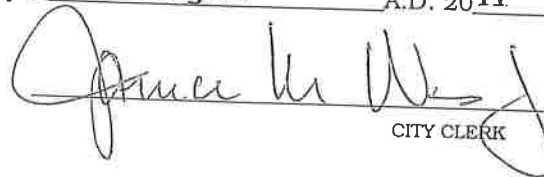
July 26, 2011

as appears from the Journal of said City Council in the office of the City Clerk of Detroit, aforesaid; that I have compared the same with the original, and the same is a correct transcript therefrom, and of the whole of such original.

In Witness Whereof, I have hereunto set my hand and affixed the corporate seal of said City, at

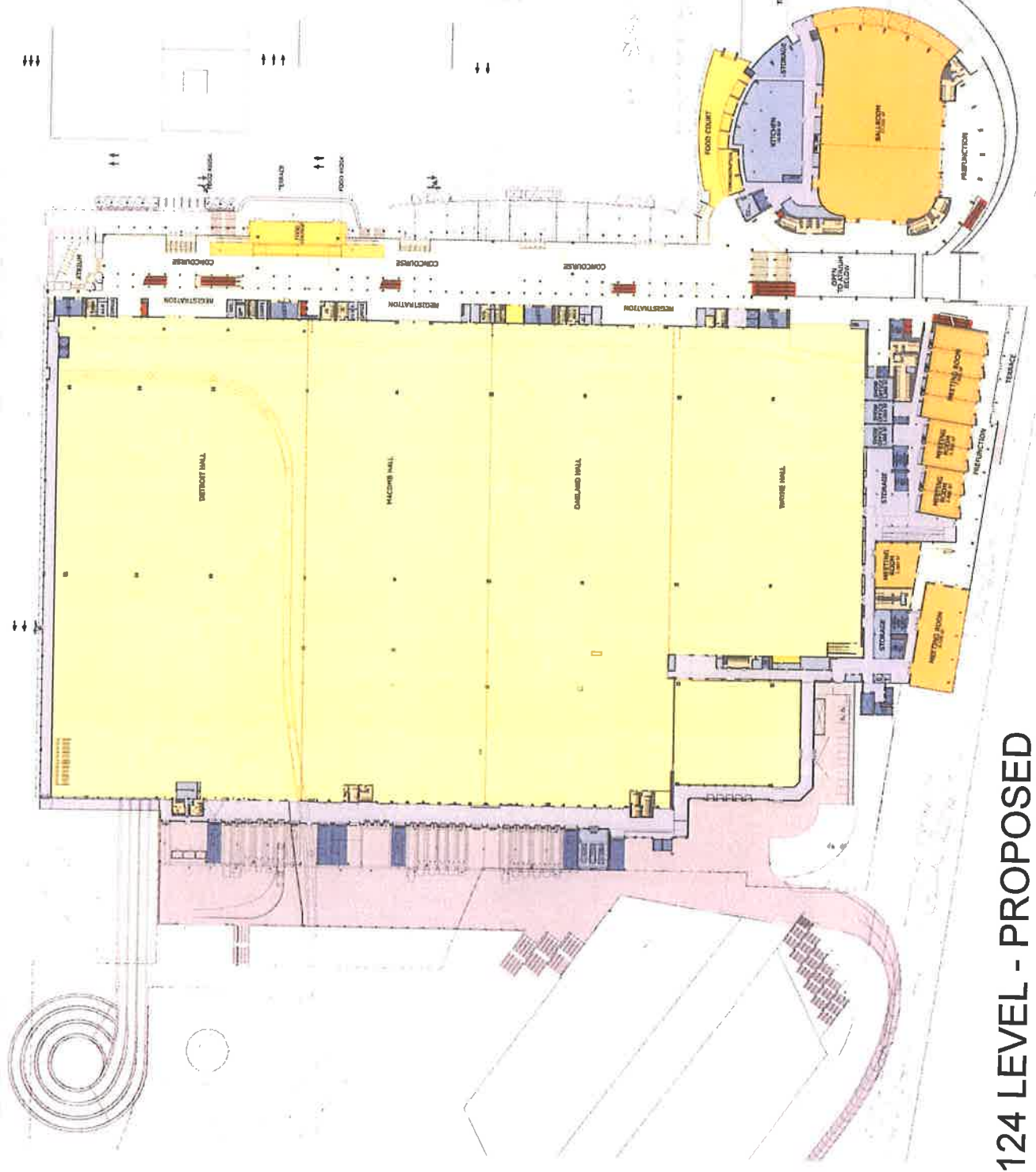
Detroit, this 3rd

day of August A.D. 2011

  
CITY CLERK

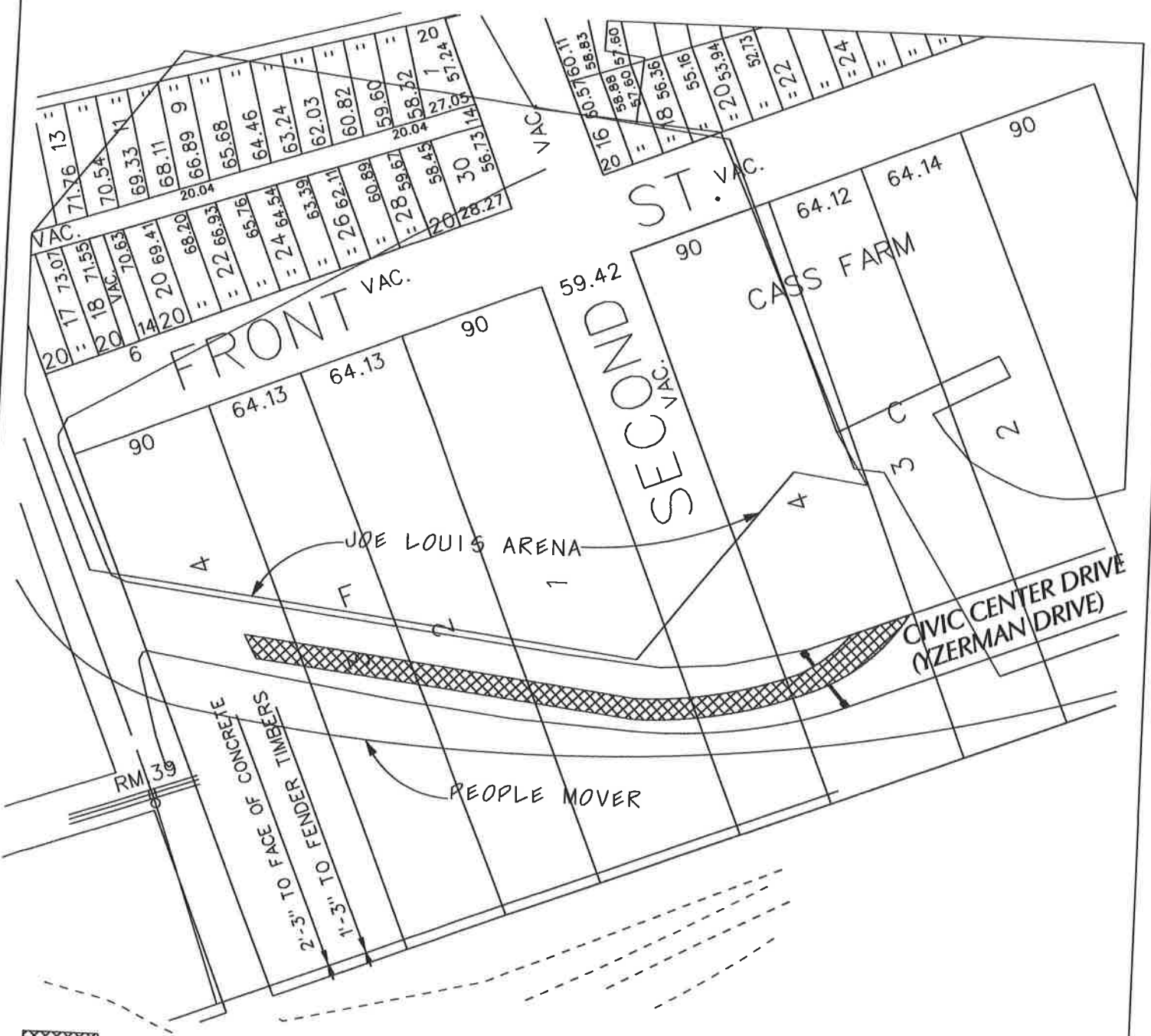
# COLOR LEGEND

	PUBLIC CIRCULATION/LOBBY
	EXHIBIT HALL
	MEETING ROOM
	RESTAURANT
	PUBLIC VERTICAL CIRCULATION
	PUBLIC RESTROOM
	ADMIN
	BACK OF HOUSE
	BACK OF HOUSE CIRCULATION
	SERVICE ELEVATOR/EXIT STAIR
	MECHANICAL
	TERRACE/PAVEMENT
	LOADING DOCK
	ROAD/PARKING
	POCHE



124 LEVEL - PROPOSED

SDG  
 615 GRISWOLD  
 SUITE 103  
 DETROIT, MICHIGAN 48226  
 C/O GEOFFREY HARRISON  
 PHONE NO. 313 961 9000 Ext. 109  
 FAX NO. 313 964 3233



 - AREA OF ENCROACHMENT

B					
A					
DESCRIPTION	DRWN	CHKD	APPD	DATE	
REVISIONS					
DRAWN BY	KSM				
DATE	5-1-12				
	CHECKED				
	APPROVED				

(FOR OFFICE USE ONLY)  
**REQUEST ENCROACHMENT**  
 (With Ramp and Support Structure)  
**INTO CIVIC CENTER DRIVE**  
 (YZERMAN DRIVE)  
**AT @ SECOND AVE.**

CARTO 28 E  
**CITY OF DETROIT**  
 CITY ENGINEERING DEPARTMENT  
 SURVEY BUREAU  
 JOB NO. 01-01  
 DRWG. NO. X2240.dgn