

City of Detroit
OFFICE OF THE CITY CLERK

Janice M. Winfrey
City Clerk

Vivian A. Hudson
Deputy City Clerk

DEPARTMENTAL REFERENCE COMMUNICATION

Monday, March 05, 2012

To: The Department or Commission Listed Below

From: Janice M. Winfrey, Detroit City Clerk

The following petition is herewith referred to you for report and recommendation to the City Council.

In accordance with that body's directive, kindly return the same with your report in duplicate within four (4) weeks.

DPW - CITY ENGINEERING DIVISION PLANNING AND DEVELOPMENT DEPARTMENT

2061 *Great Lakes Geomatics LLC, request to outright vacate all easements previously reserved within vacated Willis Avenue between John R and Brush*

February 14, 2012

#2061

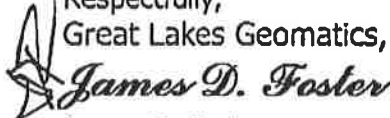
Honorable City Council
C/o City Clerk
200 Coleman A. Young Municipal Center
2 Woodward Avenue
Detroit, Michigan 48226

RE: Detroit Medical Center (DMC) request to outright vacate all easements previously reserved within vacated Willis Avenue between John R and Brush.

Great Lakes Geomatics, LLC, at 1274 Library, Ste. 603, Detroit, Michigan 48226, on behalf of the Detroit Medical Center (DMC) request the vacation (outright) of the Detroit Edison easement and the temporary Detroit Water and Sewerage Department (DWSD), (previously approved by the Detroit City Council, 12/30/69 J.C.C. Pgs. 3146-8) retained within Willis Avenue between John R and Brush. The request is necessary to make renovations and expand the entrance into Harper Hospital.

Therefore, Great Lakes Geomatics, LLC, respectfully request on behalf of the DMC, that your Honorable Body authorize the City Engineering Division – DPW to investigate this request.

If you should have any questions, please do not hesitate to contact me at (office) 313-964-2770 (cell) 313-995-1319 or jfoster@greatlakesgeomatcs.com.

Respectfully,
Great Lakes Geomatics, LLC,

James D. Foster
Development Coordinator
Development Management Group

17 FEB 12 21 04

--CITY CLERK--

Petition_Letter

1274 Library • Suite 603 • Detroit MI 48226 • (313) 964-2770

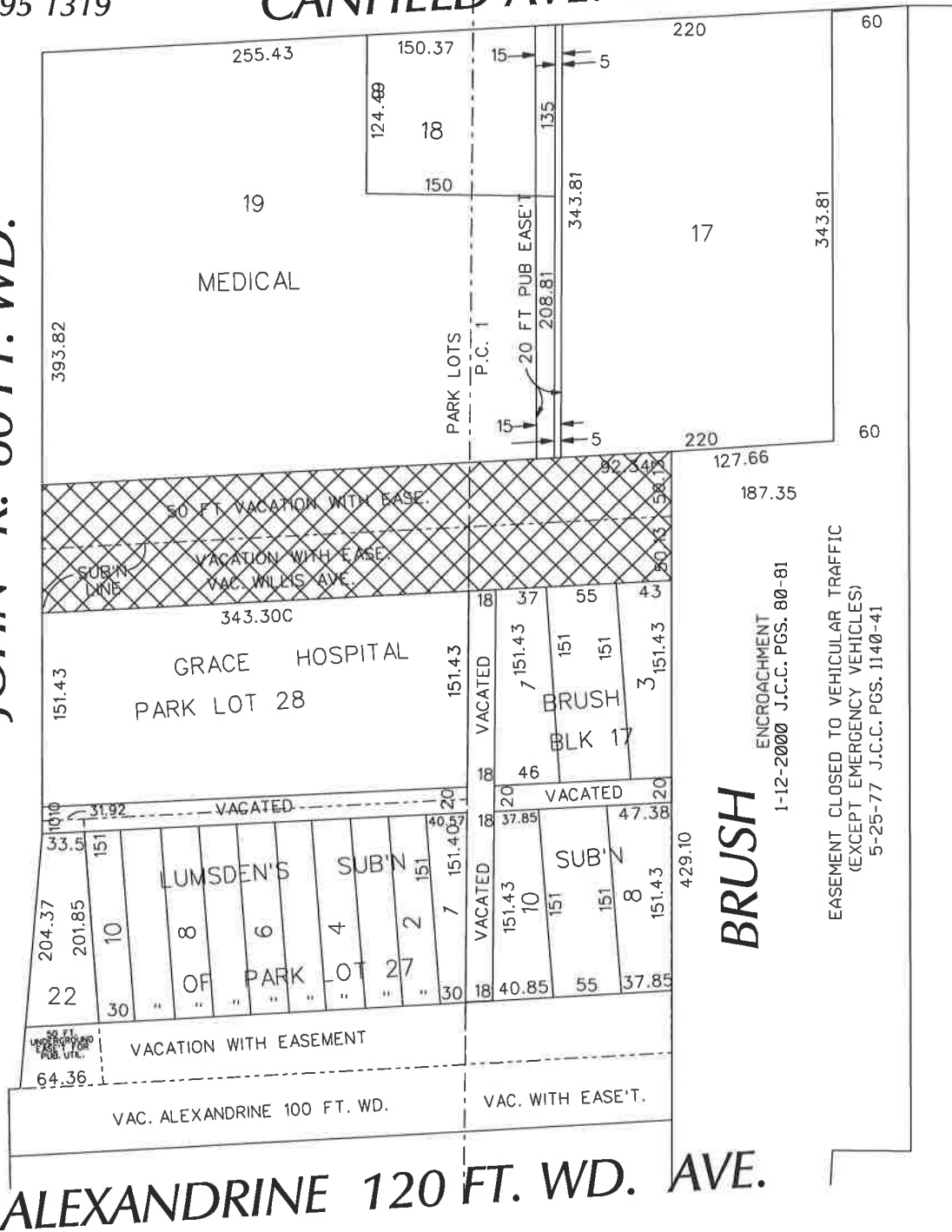
12504 Stephens • Warren MI 48089 • (586) 755-5770 • Fax (586) 755-5774
www.greatlakesgeomatcs.com

PETITION NO. 2061
 GREAT LAKES GEOMATICS LLC
 1274 LIBRARY
 SUITE 603
 DETROIT, MICHIGAN 48226
 C/O JAMES FOSTER
 PHONE NO. 313 964 2770
 CELL NO. 313 995 1319



CANFIELD AVE. 60 FT. WD.

JOHN R. 60 FT. WD.



BRUSH

ENCROACHMENT
 1-12-2000 J.C.C. PGS. 80-81

EASEMENT CLOSED TO VEHICULAR TRAFFIC
 (EXCEPT EMERGENCY VEHICLES)
 5-25-77 J.C.C. PGS. 1140-41



- AREA OF OUTRIGHT VACATION

CARTO 30 F

REQUEST TO OUTRIGHT VACATE
 WILLIS AVENUE
 BETWEEN
 JOHN R. AND BRUSH

CITY OF DETROIT
 CITY ENGINEERING DEPARTMENT
 SURVEY BUREAU

JOB NO. 01-01

DRWG. NO. X2061.dgn

B					
A					
DESCRIPTION	DRWN	CHKD	APPD	DATE	
REVISIONS					
DRAWN BY	KSM	CHECKED			
DATE	5-15-12	APPROVED			